

QUESTION BOOKLET

Question Booklet Series:
A

Question Booklet Number:

INSTRUCTIONS

Roll Number:

--	--	--	--	--	--	--	--

Seat Number:

--	--	--	--	--	--

Please read the following instructions carefully:

1) In the OMR Answer booklet clearly write your name in the Candidate name field as per ADMIT CARD. Clearly write and circle your Roll Number, Seat Number as per ADMIT CARD. Clearly write and circle your Question Booklet Number, Question Booklet Series as mentioned in the QUESTION BOOKLET.

2) Strictly follow the instructions given by the Centre Supervisor / Room invigilator and those given on the Question Booklet.

3) Please mark the right responses with a pencil.

4) Candidates are not allowed to carry any papers, notes, books, calculators, cellular phones, scanning devices, pagers etc. to the Examination Hall. Any candidate found using, or in possession of such unauthorized material, indulging in copying or impersonation or adopting unfair means, is liable to be summarily disqualified and may be subjected to penal action.

5) After finishing the examination, hand over the complete question booklet, OMR Answer Sheet and admit card to the invigilator. DO NOT carry the question booklet or any part of it, outside the examination room. Doing so, is a punishable offence.

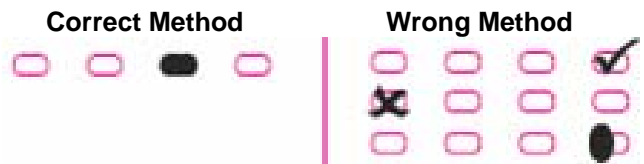
6) The test is of objective type with each question carrying 1 mark for correct response. Each question has only one correct response. There is negative marking of 0.25 for every wrong answer.

7) This Question Booklet contains a total of 180 questions and the total time allotted is 3 hours. The written test consists of questions on Verbal ability, Quantitative ability and Analytical ability.

- Verbal Skill (Part A) - 1 to 30
- Verbal Skill (Part B) - 31 to 60
- Quantitative Skill (Part A) - 61 to 90
- Quantitative Skill (Part B) - 91 to 120
- Analytical-Skill (Part A) - 121 to 150
- Analytical-Skill (Part B) - 151 to 180

8) Each objective question is followed by four responses. Your task is to choose the correct response and mark your response on the OMR Answer Sheet and NOT on the Question Booklet.

9) For marking response to a question, completely darken the CIRCLE so that the alphabet inside the CIRCLE is not visible. Darken ONLY ONE CIRCLE for each answer as shown in the example below. The CORRECT and the WRONG method of darkening the CIRCLE on the OMR sheet are given below.



10) In view of the tight time span, do not waste your time on a question, which you find to be difficult. Attempt easier questions first and come back to the difficult questions later during the test.

11) DO NOT make any stray marks anywhere on the OMR answer sheet. DO NOT fold or wrinkle the OMR answer sheet and the Subjective Response Sheets.

12) Rough work MUST NOT be done on the OMR answer sheet. Use your test booklet for this purpose.

Verbal Skill
Part A

Directions for Questions 1-6:

Read the passage and answer the questions that follow.

How Facebook is changing the way we consume news

Greg Marra's team designs the code that drives Facebook's News Feed – the stream of updates, photographs, videos and stories that users see. The 26-year-old Facebook engineer is also fast becoming one of the most influential people in the news business. Facebook now has a fifth of the world – about 1.3 billion people – logging on at least monthly. It drives up to 20 percent of traffic to news sites, according to figures from the analytics company SimpleReach. On mobile devices, the fastest-growing source of readers, the percentage is even higher, SimpleReach says.

About 30 percent of adults in the U.S. get their news on Facebook, according to a study from the Pew Research Center. Though other services, like Twitter and Google News, can also exert a large influence, Facebook is at the forefront of a fundamental change in how people consume journalism. Most readers now come to news not through the print editions of newspapers and magazines or their home pages online, but through social media and search engines driven by an algorithm, a mathematical formula that predicts what users might want to read.

It is a world of fragments, filtered by code and delivered on demand. For news organizations, said Cory Haik, senior editor for digital news at *The Washington Post*, the shift represents “the great unbundling” of journalism. “People won't type in washingtonpost.com anymore,” Ms. Haik said. “It's search and social.”

In an interview at Facebook's sprawling headquarters here, Mr. Marra said he does not think too much about his impact on journalism. “We try to explicitly view ourselves as not editors,” he said. “We don't want to have editorial judgment over the content that's in your feed. You've made your friends, you've connected to the pages that you want to connect to and you're the best decider for the things that you care about.” Mr. Marra said, “We're saying ‘We think that of all the stuff you've connected yourself to, this is the stuff you'd be most interested in reading.’”

Roughly once a week, he and his team of about 16 adjust the complex computer code that decides what to show a user when he or she first logs on to Facebook. The code is based on “thousands and thousands” of metrics, Mr. Marra said, including what device a user is on, how many comments or likes a story has received and how long readers spend on an article. The goal is to identify what users most enjoy, and its results vary around the world. In India, he said, people tend to share what the company calls the ABCDs: astrology, Bollywood, cricket and divinity

1) According to the passage, about 30% of adults in the U.S. get their news on

- A) Twitter
- B) Google News
- C) Facebook
- D) None of the options

2) The ABCDs mentioned in the passage refer to

- A) Astrology, Bollywood, Cricket, Divinity
- B) Astrology, Bollywood, Cricket, Diversity
- C) Astronomy, Bollywood, Cricket, Divinity
- D) Astronomy, Bollywood, Cricket, Democracy

3) Presently, most of the readers prefer to read news through

- A) Print editions of newspapers and magazines
- B) Home pages, of newspapers and magazines, online
- C) Social media and search engines
- D) All the options

4) Why do Marra and his team adjust the complex computer code once a week?

- A) It shows Marra and his team as to what Facebook users enjoy most.
- B) It decides what to show a user when he/she first logs on to Facebook.
- C) It displays a wide range of programs that Facebook users log on for the first time.
- D) It takes stock of the likes and dislikes of Facebook users.

5) Choose the SYNONYM of 'fragments' as used in the passage.

- | | |
|------------|-------------|
| A) Pages | B) Editions |
| C) Figures | D) Pieces |

6) What does Greg Marra's team do?

- A) They write about the latest current events.
- B) They publish Facebook's news updates.
- C) They design the code that drives Facebook's News Feed.
- D) They devise the methodology of writing codes for News Feed.

Directions for Questions 7-12:

Fill in the blank with the correct Article:

7) _____ Newton is a great scientist.

- A) No Article required
- B) A
- C) The
- D) An

8) _____ frozen snow crushed under the wheels of our car.

- A) An
- B) No Article required
- C) The
- D) A

9) _____ town is famous for its hot springs.

- A) A
- B) The
- C) An
- D) No Article required

10) We decided to go boating on _____ Dal lake.

- A) An
- B) No Article required
- C) A
- D) The

11) Two men are assisting _____ police in their enquiry.

- A) An
- B) A
- C) The
- D) No Article required

12) _____ Penguins and ostriches are flightless birds.

- A) The
- B) A
- C) An
- D) No Article required

Directions for Questions 13-18:

Fill in the blank with the correct form of the verb:

13) She _____ ten years ago.

- A) Die
- B) Dies
- C) Has died
- D) Died

14) Plutonium is a fuel used to _____ nuclear energy.

- A) Produced
- B) Produces
- C) Produce
- D) Producing

15) Vegetarianism _____ very popular these days.

- A) Are
- B) Is
- C) Has been
- D) Were

16) When the violinist finished, the audience _____ for five minutes.

- A) Clapped
- B) Claps
- C) Had clap
- D) Has clapped

17) She _____ the television on continuously.

- A) Have
- B) Is having
- C) Has had
- D) Has

18) We must _____ the feelings of other people.

- A) Considered
- B) Have consider
- C) Considers
- D) Consider

Directions for Questions 19-24:

Fill in the blank with the correct option:

19) She went out without _____ money.

- A) Lot
- B) A lot
- C) Some
- D) Any

20) Last week, we went out with _____ friends.

- A) Some
- B) Much
- C) Lot
- D) No

21) I drink _____ of water every day.

- A) Little
- B) Much
- C) A lot
- D) A little

22) He has travelled _____.

- A) Some
- B) A lot
- C) Many
- D) Lot

23) The bus service is very good, there is a bus _____ ten minutes.

- A) Most
- B) Every
- C) Some
- D) All

24) Can you lend me _____ money, please.

- A) Some
- B) Few
- C) Little
- D) Much

Directions for Questions 25-30:

Identify the error in the following sentence. The error if any will be in one part of the sentence, the number of that part is your answer. If there is no error, mark your answer as 4. Ignore punctuation errors.

25) (1) There is plenty of / (2) water in the lakes, / (3) despite the drought this year. / (4) No error.

- A) 1
- B) 2
- C) 3
- D) 4

26) (1) Finally, he completed his presentation / (2) offer some constructive suggestions / (3) for further reading. / (4) No error.

- A) 1
- B) 2
- C) 3
- D) 4

Directions for Questions 45-52:

Choose the appropriate synonym of the word underlined in the sentence given below from the options that follow that can replace it (underlined word):

45) It is often difficult to discern the truth of an event from a newspaper report.

- A) Follow
- B) Recognize
- C) Read
- D) Spread

46) The guests chattered while they waited for dinner.

- A) Laughed
- B) Talked
- C) Acted
- D) Walked

47) Mohan is never lavish in giving money to charity.

- A) Adequate
- B) Gentle
- C) Drab
- D) Extravagant

48) We should prune an essay of superfluous matter.

- A) Remove
- B) Add
- C) Provide
- D) Substitute

49) She was greatly piqued when they refused her invitation.

- A) Hurt
- B) Irritated
- C) Delighted
- D) Honoured

50) He is in a pensive mood.

- A) Jovial
- B) Perfect
- C) Contemplative
- D) Bad

51) They prevailed over their enemies in the battle.

- A) Triumphed
- B) Panicked
- C) Scanned
- D) Manipulated

52) I don't want to become embroiled in their quarrels.

- A) Attacked
- B) Provoked
- C) Involved
- D) Agitated

Directions for Questions 53-60:

Fill in the blank with the correct form of the verb:

53) The river _____ very fast today, much faster than usual.

- A) Flow
- B) Flows
- C) Is flowing
- D) Flowed

54) The thought of how much work she should do _____ her.

- A) Discouraged
- B) Discourage
- C) Has discourage
- D) Discourages

55) I'll give him your message the minute he _____.

- A) Has been arriving
- B) Arrive
- C) Arrives
- D) Have arrived

56) I _____ a dim recollection of having _____ her before.

- A) Has, met
- B) Have, meets
- C) Have, meet
- D) Had, met

57) She always _____ hungry in the afternoon.

- A) Was getting
- B) Gets
- C) Get
- D) Got

58) Mother _____ when the guests arrived.

- A) Cooks
- B) Cooked
- C) Is cooking
- D) Was cooking

59) If I _____ too much coffee, I can't _____.

- A) Drank, sleep
- B) Drink, sleep
- C) Drinks, sleep
- D) Have drunk, slept

60) The road _____ into a six-lane highway last year.

- A) Has broadened
- B) Broadening
- C) Was broadened
- D) Is broadened

Quantitative Skill

Part A

61) If A and B can do a piece of work in 10 days and B can do it in 15 days then A can do the same work in

- A) 30 days
- B) 25 days
- C) 35 days
- D) 20 days

62) If Ravi and Gopi can workout a problem in 20 min and 15 min individually then together can work out in

- A) 7/60 minutes
- B) 60/11 minutes
- C) 11/60 minutes
- D) 60/7 minutes

63) If 40 people can complete a project in 100 days then 10 people complete the same project in

- A) 150 days B) 200 days
C) 400 days D) 300 days

64) The mean of 10 numbers is 152 then their sum is

- A) 15200 B) 1520 C) 15.2 D) 1.52

65) If the average of first 10 natural numbers is 5.5 and 3 is subtracted from each number then the average will be

- A) 2.5 B) 5.5 C) 8.5 D) 16.5

66) The sum of 20 numbers is 1900 then their average is

- A) 1920 B) 3800 C) 380 D) 95

67) The prime factors of the number 2960 are respectively

- A) 2, 5 and 37 B) 3, 5 and 37
C) 2, 5 and 39 D) 2, 5 and 43

68) The prime factors of the number 7320 are respectively

- A) 3,5,7 and 17 B) 2,3,5 and 61
C) 3, 5, 11 and 57 D) 5,11,19 and 23

69) The G.C.D and L.C.M of two numbers are 45 and 66 then the product of numbers is

- A) 6600 B) 4500 C) 2970 D) 2936

70) The G.C.D of 480, 96, 75, and 122 is

- A) 24 B) 1 C) 2 D) 44

71) If 45% of x is equal to 85% of y then x and y are related as

- A) $5x=9y$ B) $9x=5y$ C) $9x=17y$ D) $17x=9y$

72) If 3% of a certain number is 90 then the number is

- A) 3200 B) 3000 C) 2700 D) 2500

73) If 30% of a certain number is 30 less than the number then the number is

- A) $300/7$ B) $320/7$ C) $326/7$ D) $345/7$

74) A box contains pens and pencils in the ratio 2:7. If there are 28 pencils in the box, then what is the number of pens present in the box?

- A) 8 B) 10 C) 20 D) 14

75) The ratio of chickens to pigs to horses in a farm is 15:7:3. If there are 300 horses in the farm, then what is the number of chickens?

- A) 150 B) 75 C) 1500 D) 80

76) Ten men can paint a room in 3 hours. How many hours would 5 men take to paint the room, if they work at the same rate?

- A) 6 hours B) 1.5 hours
C) 10 hours D) 7 Hours

77) A man divides Rs.52,500 between his son and his daughter in the ratio 6:9. How much did his daughter get?

- A) Rs.21000 B) Rs.31500
C) Rs.40000 D) Rs.25000

78) If the length of the arc of a sector is 10 m and the radius being 5 m then its area is

- A) 12 m^2 B) 10 m^2 C) 25 m^2 D) 50 m^2

79) If the perimeter of the sector is 40 m and radius being 10 m then its arc length is

- A) 10 m B) 50 m C) 30 m D) 20 m

80) If + replaces - and - replaces +, then the value of $(100-2)*(81+40)$ is

- A) 4130 B) 4128 C) 4182 D) 4144

81) If + replaces / and / replaces +, then the value of $((7/3)+2)*3$ is

- A) 15 B) 25 C) 32 D) 41

82) If / replaces -, then the value of $(8/5)*7+(8/3)$ is

- A) 36 B) 38 C) 28 D) 26

83) If + replaces * and * replaces +, then the value of $2+(7*6)+(3*8)$ is

- A) 756 B) 314 C) 514 D) 286

84) 1m/s is equal to

- A) $5/18 \text{ km/hr}$ B) $5/12 \text{ km/hr}$
C) $18/5 \text{ km/hr}$ D) $12/5 \text{ km/hr}$

85) The distance travelled by a car during 10 minutes moving with a speed of 10 meters per second is

- A) 10 km B) 12 km C) 18 km D) 6 km

86) If a car covers a distance of 80 m in 10 seconds then its speed in km/hr is

- A) 28.8 km/hr B) 18.8 km/hr
C) 22.8 km/hr D) 17.8 km/hr

87) The speed of the train covering 600 km in 12 hours is

- A) 72 km/hr B) 30 km/hr
C) 50 km/hr D) 60 km/hr

88) An Executive in Montreal receives a call from a customer in Dubai at 11 p.m. The time difference between Montreal and Dubai is 13 hours. What was the time in Dubai when the customer called?

- A) 12 p.m. B) 12 a.m.
C) 1 p.m. D) Data insufficient

89) The price of a pair of jeans worth Rs.450 is reduced by one-fifth. How much tax must be paid for it in a state that imposes a 5% sales tax?

- A) Rs.22.5 B) Rs.18 C) Rs.4.5 D) Rs.20

90) A man divides his property among his sons in such a way that one gets half of the property, the second gets a quarter, the third gets one-fifth and the fourth gets Rs.9000. What is the value of the total property?

- A) Rs.90,000 B) Rs.1,80,000
C) Rs.2,20,000 D) Rs.2,50,000

Quantitative Skill
Part B

91) The average of 29 numbers is 43 and if average of the first 15 is 15 and that of last 15 is 73 find the value of the 15th number?

- A) 15 B) 43 C) 73 D) 88

92) Find the average of 11 consecutive odd numbers a,b,c,d,e,f,g,h,i,j,k respectively?

- A) a B) d C) f D) h

93) A man bought 6 dolls of Rs. 660 each, 5 balls of Rs.250 each and 4 mats at Rs. 350 each. What is the approximate average value of each article?

- A) Rs.310.5 B) Rs.440.66
C) Rs.503.4 D) Rs.506.4

94) Find the sum if the difference between the Compound Interest and the Simple Interest for 3 years is Rs.25029 at 9 % p.a. when the interest is compounded annually.

- A) Rs.500580 B) Rs.1000000
C) Rs.1003560 D) Rs.1200060

95) Find the approximate amount when Rs. 1200 is deposited for 3/4 year at 12% p.a. at Compound Interest where interest is reckoned quarterly?

- A) Rs.1008 B) Rs.1311
C) Rs.1344 D) Rs.4008

96) Find the difference between the Compound Interest and Simple Interest (S.I.) for two years on Rs.1700 if the S.I. on the same sum for one year is Rs.85 at 5 % p.a.? (Interest is compounded Annually)

- A) Rs. 4.25 B) Rs. 8.5
C) Rs. 17 D) Rs. 20

97) Find the amount when Rs.2560 is deposited in a bank for 1 2/5 years at 25% p.a. compounded annually?

- A) Rs.3200 B) Rs.3520
C) Rs.3712 D) Rs.4280

Directions for Questions 98-100:

Read the following information and answer the questions that follow:

The production, sales and price of companies A, B, C, D, E for the year 2013 and 2014 are given in the following table. Study the following table and answer the question accordingly.

Company	PRODUCTION IN 1000 IN 2013	SALES IN 100 IN 2013	PRICE/CAR IN LAKHS IN 2013
COMPANY A	25	185	6
COMPANY B	36	330	3.5
COMPANY C	19	115	7
COMPANY D	15	121	5
COMPANY E	30	249	4.5

Company	PRODUCTION IN 1000 IN 2014	SALES IN 100 IN 2014	PRICE/CAR IN LAKHS IN 2014
COMPANY A	21	160	6
COMPANY B	39	290	3.2
COMPANY C	27	225	6.5
COMPANY D	18	95	6
COMPANY E	30	220	5

98) For how many companies is the ratio of total sales value in year 2013 to total sales value in year 2014 more than 1?

- A) 1 B) 2 C) 3 D) 4

99) For which of following company the production was increased from 2013 to 2014 year by exactly 20%?

- A) A B) B C) C D) D

100) For company C find the difference in production and sales in the year 2014.

- A) 3000 B) 4500 C) 6000 D) 7500

101) Find the value of $23.6^3 - 27.1^3 + 3.5^3$.

- A) -6715.38 B) -5312.19
C) -5321.91 D) 4532.16

102) Which of the following is TRUE?

- A) $23/19 < 25/24 < 29/21$
B) $29/23 < 27/21 < 23/21$
C) $29/23 < 27/26 < 23/21$
D) $31/29 < 42/29 < 43/23$

103) Find the value of $5.5 \times 6.7 \times 6.8 / [117 + 3(2.5 \times 3.7 + 3.7 \times 3.8 + 3.8 \times 2.5) + 2.5 \times 3.7 \times 3.8]$.

- A) 1 B) 2 C) 3 D) 4

104) Find the value of $(217 \frac{15}{19})^2 + (215 \frac{15}{19})^2 + (211 \frac{15}{19})^2 - (217 \frac{15}{19})(215 \frac{15}{19}) - (217 \frac{15}{19})(211 \frac{15}{19}) - (215 \frac{15}{19})(211 \frac{15}{19})$.

- A) 24 B) 28 C) 32 D) 36

105) Find the greatest number of 5 digits which when divided by 9, 15, 18 and 21 leaves remainders 5, 11, 14 and 17 respectively.

- A) 99536 B) 99538
C) 97536 D) 97538

106) Find the greatest number such that when 795, 671, 523 are divided by it leaves the same remainder in each case.

- A) 4 B) 9 C) 13 D) 19

107) A number when divided by 259 leaves 149 as remainder. If the same number is divided by 37 then what would be the remainder?

- A) 0 B) 1 C) 35 D) 36

108) What is the number in unit place of $3687^{343} + 9$?

- A) 1 B) 2 C) 7 D) 9

109) The population of a town is 123400. It increases by 18% in the first year and further it increases by 27% in the second year. Find the overall approximate percentage increase in population?

- A) 45 B) 50 C) 55 D) 60

110) In an examination A scores 92% and gets 211.5 marks more than the minimum required marks while B scores 29% marks and fails by 72 marks. Find the maximum marks for the examination.

- A) 100 B) 300 C) 450 D) 600

111) When 27% of a certain number is subtracted from the number itself then we obtain 511. Find 59% of that number?

- A) 301 B) 413 C) 531 D) 631

112) A boy buys 20 candies at Rs.2 per piece. He buys five chocolates at Rs.7 per piece. At what value should he sell them to make a profit of Re.1 per piece?

- A) Rs.75 B) Rs.82.5 C) Rs.90 D) Rs.100

113) A showroom offers one item free on the purchase of every five items. What is the discount offered by the showroom?

- A) 20% B) 16.66% C) 16% D) 25%

114) A man buys certain number of bananas at 3 per rupee and same number at 7 per rupee. He mixes them together and sells at 10 per rupee. Find the gain or loss %.

- A) Gain 50% B) Gain 34%
C) Loss 58% D) Loss 34%

115) A vendor on discovering that 20% of the eggs were rotten, increased his selling price by 15% more than the 15% he was already charging. Find the percentage profit.

- A) 5.8% B) 6.3% C) 6.8% D) 7.2%

116) A trader decides to sell a kilogram of sugar at its cost price. But he uses false weights and sells only 900 grams instead of a kilogram. What is the percentage of profit?

- A) 10% B) 11.11% C) 11% D) 10.11%

117) A's present age is 2.5 times the age of B. If after 2.5 years the ratio of their ages is 11:5, then find the present age of B?

- A) 5 B) 10 C) 25 D) 40

118) A bag contains Rs. 2 and Rs.10 coins in the ratio 21:34 respectively, which amounts to Rs.3438, then find the number of Rs.10 coins?

- A) 201 B) 256 C) 306 D) 401

119) The ratio of the number of marbles between A and B is 27 : 39 and that with B and C is 117:119. If C has 1071 number of marbles with him then find the total number of marbles among A, B and C?

- A) 1071 B) 2071 C) 2142 D) 2853

120) Rs 66500 is distributed among A, B and C in the ratio of 9:11:15. Find the difference between the share of A and C.

- A) Rs.7600 B) Rs.11400
C) Rs.17100 D) Rs.28500

Analytical-Skill
Part A

Directions for Questions 121-122:

Find the missing term:

121) GOLDEN : HQOHJT :: SILVER : ?

- A) TLOZJW B) TKOJZY
C) TLOZJX D) TKOZJX

122) PRINT : 79952 :: FAULT : ?

- A) 61332 B) 61442
C) 51332 D) 61554

Directions for Questions 123-125:

Given below is a set of statements. Examine the statements and state the nature of relationship between them:

123) A) Mumbai lies on the coast.
B) The climate in Mumbai is very humid.

- A) A is the cause and B is the effect.
B) B is the cause and A is the effect.
C) A and B are independent causes.
D) A and B are effects of independent causes.

124) A) Earth has seasons.
B) Earth revolves around the sun.

- A) A is the cause and B is the effect.
B) B is the cause and A is the effect.
C) A and B are independent causes.
D) A and B are effects of independent causes.

125) A) Gold is rare.
B) Gold is precious.

- A) A is the cause and B is the effect.
B) B is the cause and A is the effect.
C) A and B are independent causes.
D) A and B are effects of independent causes.

126) A told B that C is his father's nephew. D is A's cousin but neither brother nor mother of C. How is D related to C?

- A) Sister B) Father C) Mother D) Aunt

127) Pointing Jatin, Rashi said, "His sister is my mother's only daughter". How is Rashi related to Jatin?

- A) Granddaughter B) Daughter
C) Sister D) Mother

128) If SPAIN is written as 68512 and FRANCE is written as 795243, how is AFRICA coded?

- A) 579845 B) 579235
C) 579145 D) 578915

129) In a certain language, if MADRAS is coded as NBESBT, how is BOMBAY coded?

- A) CPNCBX B) CPNCBZ
C) CPOCBZ D) CQOCBZ

130) In a certain code SIKKIM is written as THLJLL. How is TRAINING written in that code?

- A) UQBJOHOO B) UQBHOHOF
C) UQBJOHOO D) SQBHOHOF

Directions for Questions 131-132:

The question below is followed by two statements. Find whether the data in given statements are sufficient to answer the question and choose the correct alternative given.

131) How many mangoes does Renu eat on Thursday?

- I) Renu eats 2 mangoes on the first day.
II) Everyday she eats 2 mangoes more than the previous day.

- A) Statement I alone is sufficient to answer the question.
B) Statement II alone is sufficient to answer the question.
C) Statement I and II are together sufficient to answer the question but neither of the statements alone is sufficient.
D) Question cannot be answered unless more information is provided.

132) Akshay and Aashish are travelling from Mumbai to Pune on different motor bikes. Who reached Mumbai first?

- I) On their way Akshay overtook Aashish thrice and Aashish also overtook Akshay thrice.
- II) They both started at the same time and Aashish overtook Akshay first.

- A) Statement I alone is sufficient to answer the question.
- B) Statement II alone is sufficient to answer the question.
- C) Statement I and II are together sufficient to answer the question but neither of the statements alone is sufficient.
- D) Either of the statements I and II are sufficient to answer the question independently.

133) Some statements are given. Choose the correct set of three statements that make a logical sequence.

- A) All painters are humorists.
- B) Some cartoonists are singers.
- C) Some cartoonists are painters.
- D) All cartoonists are humorists.
- E) Some humorists are cartoonists.
- F) Some humorists are painters.

- A) ABD B) ECF C) CDE D) DCF

134) Choose the conclusion that can be drawn from the given statements.

Statements:

- I. All reds are blues.
- II. All blues are yellows.
- III. All browns are yellows.

Conclusions:

- I. Some reds are browns.
- II. Some blues are reds.
- III. Some yellows are reds.
- IV. All yellows are blues.

- A) Only I follows
- B) II and III follows
- C) I and IV follows
- D) Only II follows

135) Some statements are given. Choose the correct set of three statements that make a logical sequence.

- A) Some sauces are spicy.
- B) All sauces are spicy.
- C) Some ketchups are jams.
- D) All ketchups are spicy.
- E) Some sauces may be spicy.
- F) All ketchups are sauces.

- A) FBD B) AFD C) DBF D) BFE

Directions for Questions 136-138:

Read the following information and answer the questions that follow:

L, M, N, P and Q are studying Music, Tennis, French, English and Guitar. They like different food items ie, pizza burger, ice-cream, aloo chat and sandwich.

- (1) The student who likes ice-cream never study Music.
- (2) The student who studying Guitar, Likes pizza.
- (3) M studies English and P studies Music.
- (4) The student who studies French, never like aloo chat.
- (5) L likes aloo chat and Q likes sandwich.

36) Which subject does the student study who likes burger?

- A) Tennis B) Guitar C) Music D) French

137) Which of the students likes ice-cream?

- A) L B) M C) N D) P

138) Which food does the student like who studies French?

- A) Pizza B) Ice-cream
- C) Sandwich D) Burger

Directions for Questions 139-141:

Given below is a set of statements. Examine the statements and choose the correct alternative about conclusion:

139) Statements:

- Salt has bitter taste.
- My medicine has bitter taste.

Conclusion:

My medicine may have salt in it.

- A) Conclusion is definitely true
- B) Conclusion is probably true.
- C) Conclusion is probably false.
- D) Data is inadequate.

140) Statements:

- Water is a liquid.
- Rice is of the colour of water.

Conclusion:

Rice is water.

- A) Conclusion is definitely true
- B) Conclusion is probably true.
- C) Conclusion is probably false.
- D) Data is inadequate.

141) Statements:
December is a winter month.
Winter months are cold.

Conclusion:
December is cold.

- A) Conclusion is definitely true
B) Conclusion is probably true.
C) Conclusion is probably false.
D) Data is inadequate.

Directions for Questions 142-143:

Each of these questions are followed by two statements.
Examine them and choose the correct alternative.

142) Which is heavier; 1 kg of iron or 1 kg of cotton?

- I) 1 kg of iron is heavier.
II) Both are equal.

- A) Statement I follows.
B) Statement II follows.
C) Both I and II follows.
D) None follows.

143) Ram is Sundari's brother and Vinod's brother-in-law.
Ram is unmarried and has 2 married sisters. Vidya is Ram's Mother.

- I) Vinod may or may never be married to Sundari.
II) Vidya is Vinod's mother-in-law.

- A) Statement I follows.
B) Statement II follows.
C) Both I and II follows.
D) None follows.

144) $A = B$ means A is daughter of B, $A \parallel B$ means A is son of B, $A \gg B$ means A is B's sibling, $A \ll B$ means A is B's grandchild. Which of the following necessarily means that A is 'B's father'?

- A) $B \ll C$ and $A = C$
B) $A \ll C$ and $B \parallel C$
C) $A \gg C$ and $B \parallel C$
D) None of these options

145) If in a coded language, $A \circ B$ means A is taller than B, $A \Delta B$ means A is shorter than B, $A \square B$ means A is as tall as B. Then, which of the following represents that C is the shortest in the group of C, D and E?

- A) $D \circ E$; $E \square C$ B) $D \Delta C$; $E \square C$
C) $D \circ E$; $E \Delta C$ D) $D \circ C$; $E \circ C$

Directions for Questions 146-147:

Select the pair which is similar in relation to the pair given in the question.

146) Foundation: House

- A) Pen : Pencil B) Paper : Wood
C) Pedestal : Statue D) Inkpot : Ink

147) Dog : Faithful

- A) Lamb : Gentle B) Cow : Funny
C) Goat : Mutton D) Cat : Mew

148) Rahul walks 10m towards North. He then turns left and walks 20m. He again turns left and walks 10m; Again he moves 10m after turning to his right, How far is he from his original position?

- A) 30m B) 25m C) 15m D) 10m

149) A person goes towards East 5km; then he takes a turn to south-west and goes 5 km. He again takes a turn North-West and goes 5 km. With respect to the point from where he started, where is he now?

- A) In North B) In West
C) In North-South D) In South-West

150) Early morning after sunrise Raju was standing in front of his house in such a way, that his shadow was falling exactly behind him. He starts walking straight and walks 5m. He turns to his left and walks 3m and again turning to his left walks 2m. Now in which direction is he from his starting point?

- A) South B) North
C) South-west D) North-East

Analytical-Skill Part B

Directions for Questions 151-153:

The question below is followed by two statements. Find whether the data in given statements are sufficient to answer the question and choose the correct alternative given.

151) Four friends A, B, C and D participated in a race. Who won the race?

- I) B took lesser time than A and C to finish the race.
II) A took lesser time than C and D to finish the race.

- A) Statement I alone is sufficient to answer the question.
B) Statement II alone is sufficient to answer the question.
C) Statement I and II are together sufficient to answer the question but neither of the statements alone is sufficient.
D) Either of the statements I and II are sufficient to answer the question independently.

152) How many candidates out of P, Q, R, S and T have been selected in the interview?

- I) True statement: One of P, R and S have been selected.
- II) False statement: Atleast one of Q, S and T have been selected in the interview.

- A) Statement I alone is sufficient to answer the question.
- B) Statement II alone is sufficient to answer the question.
- C) Statement I and II are together sufficient to answer the question but neither of the statements alone is sufficient.
- D) Either of the statements I and II are sufficient to answer the question independently.

153) Ram and Lakshman are two brothers married to two sisters Urmila and Sita never in that order. Whom is Ram married to?

- I) Sita is married to Ram or Lakshman
- II) Ram is married to Urmila or Sita.

- A) Statement I alone is sufficient to answer the question.
- B) Statement II alone is sufficient to answer the question.
- C) Statement I and II are together sufficient to answer the question but neither of the statements alone is sufficient.
- D) Either of the statements I and II are sufficient to answer the question independently.

Directions for Questions 154-156:

Each of these questions are followed by two statements. Examine them and choose the correct alternative.

154) Gandhiji appreciates cleanliness and inspired others for same. Babu is Gandhiji's follower and believe in all his principles.

- I) Babu appreciates cleanliness.
- II) Babu is inspired by Gandhiji.

- A) Statement I follows.
- B) Statement II follows.
- C) Both I and II follows.
- D) None follows.

155) Movies are entertaining. Movies are educative. PK movie is drama.

- I. PK movie is educative
- II. PK movie is entertaining.

- A) Statement I follows
- B) Statement II follows
- C) Both I and II follows.
- D) None follows.

156) Some realists are practical. Socrates is a realist. Plato is realist.

- I) Socrates may be practical.
- II) Plato is practical.

- A) Statement I follows.
- B) Statement II follows.
- C) Both I and II follows.
- D) None follows.

Directions for Questions 157-159:

Read the following information and answer the questions that follow:

Rekha and Ajay are the two judges at a beauty contest, selecting candidates for various international beauty pageants. Each of them is required to select a group of three candidates from a total of 7 contestants available. The 7 contestants are M, N, O, P, Q, R, and S. The groups have to be mutually exclusive. The following further restrictions apply:

- 1] If one judge selects N or Q, then the other judge has to select P or S respectively and vice versa.
- 2] S and M both can never be selected by the same person and, P and R never go together.

157) All of the following selections made by the judges are incorrect, other than:

- A) Rekha (MNO) and Ajay (PQR)
- B) Rekha (MNS) and Ajay (OPQ)
- C) Rekha (NQS) and Ajay (MPR)
- D) Rekha (OPQ) and Ajay (NRS)

158) If Rekha selects N, then which of the following is true ?

- A) M must be selected by Rekha
- B) R must be selected by Ajay.
- C) Q must not be selected by Rekha.
- D) R must not be selected by Ajay.

159) If N and Q are in Rekha's selection, then Ajay's selection must include :

- A) M, P and R
- B) M, R and S
- C) O, R and S
- D) O, P and S

Directions for Questions 160-162:

Select the pair which is similar in relation to the pair given in the question.

160) Cultivate : Crop

- A) Nature : Child
- B) Secure : Possession
- C) Babble : Talk
- D) Sing : Song

161) Lifeboat : Ship

- A) Trapeze : Circus
- B) Ship : Canoe
- C) Parachute : Aeroplane
- D) Engine : Motor

162) Clove : Spices

- A) Honey : Sweet
- B) Red : Colour
- C) Water : Rain
- D) Camphor : Oil

Directions for Questions 163-166:

Find the odd one out.

- 163)
- A) T W Z
 - B) A C E
 - C) B D G
 - D) H J L

- 164)
- A) Tortoise
 - B) Spider
 - C) Snail
 - D) Crab

- 165)
- A) AK
 - B) CM
 - C) EP
 - D) DN

- 166)
- A) YW
 - B) SQ
 - C) NL
 - D) HE

Directions for Questions 167-170:

Find missing term in the following series:

- 167) 101, 401, 901, 1601, 2501,..... ,4901
- A) 5501
 - B) 7601
 - C) 4201
 - D) 3601

- 168) 3, 8, 15, 24,.....,48
- A) 32
 - B) 33
 - C) 34
 - D) 35

- 169) 0, 2, 6, 12, 20,....., 42
- A) 25
 - B) 30
 - C) 32
 - D) 40

- 170) 110, 132, 156, 182,.....
- A) 210
 - B) 201
 - C) 211
 - D) 212

Directions for Questions 171-173:

Find the missing term:

- 171) E8T, H7R, ?, N5N, Q4L
- A) L6P
 - B) K6Q
 - C) K6P
 - D) K9P

- 172) 1000 : 10 :: 1331 : ?
- A) 11
 - B) 21
 - C) 101
 - D) 139

173) ANTICIPATION: ICITNANOITAP:: PRODUCTIVITY : ?

- A) CUDORPYTIVIT
- B) CUDORPTIVTI
- C) CUDOPRYTIVIT
- D) CUDORPTYIVIT

Directions for Questions 174-176:

Read the following information and answer the questions that Sfollow:

There are six children playing football namely G, H, I, J, K and L. G and K are brothers, L is the only sister of K. I is the only son of G's uncle. H and J are the daughters of the brother of I's father.

- 174) How is J related to G?
- A) Sister
 - B) Niece
 - C) Cousin
 - D) Uncle

- 175) How is I related to L?
- A) Cousin
 - B) Son
 - C) Uncle
 - D) Brother

- 176) How many male players are there?
- A) One
 - B) Three
 - C) Four
 - D) Five

Directions for Questions 177-178:

Some statements are given. Choose the correct set of three statements that make a logical sequence.

- 177) A) Aspirin is medicine.
 B) All analgesics are medicines.
 C) Aspirin is analgesic.
 D) Some analgesics are medicines.
 E) Antacids are medicines.
 F) Aspirin may be analgesic.
- A) ABF
 - B) CED
 - C) EAF
 - D) BDC

- 178) A) Some shirts are trousers.
 B) All shirts are trousers.
 C) Some jackets are woolens.
 D) All jackets are trousers.
 E) Some shirts may be trousers.
 F) All jackets are shirts.
- A) AFD
 - B) DBF
 - C) FBD
 - D) BFE

Directions for Questions 179-180:

The question has three statements and some conclusions.
Choose the conclusion that logically follows.

179) Statements:

- I. All teachers are learned.
- II. Some writers are learned.
- III. Arundhati is a writer.

Conclusions:

- I. Arundhati is learned.
- II. Some teachers are writers.
- III. All writers are teachers.
- IV. Arundhati may be learned.

- A) Only I follows
 - B) I and II follows
 - C) III and IV follows
 - D) Only IV follows
-

180) Statements:

- I. All rats are dogs.
- II. All dogs are cats.
- III. All cows are cats.

Conclusions:

- I. Some rats are cows.
- II. Some dogs are rats.
- III. Some cats are rats.
- IV. All cats are dogs.

- A) Only I follows
- B) Only II follows
- C) II and III follows
- D) All follows

Space for Rough Work:

Space for Rough Work:

Space for Rough Work: