

# Eklavya Eklavya 2021

## ONE BOW GURU MANTRA GOAL

Get a Chance to Learn from **India's Best Teachers** & Crack **JEE ADVANCED 2021**

**Vedantu's Eklavya 2021 is a Specialized Program for JEE ADVANCED**, designed and headed by Co-Founder, IIT alumnus and Master Teacher Anand Prakash. Get mentored by **Top JEE Experts**, who have produced JEE Advanced **AIR 1, 2, 4, 7**, & many more.

---

### Anand Prakash

Co-Founder, Vedantu  
IIT- Roorkee



## Our Previous **EKLAVYANs** & Their Achievements

Student Name	Main Rank	Advanced Rank
Chirag Jain	731	41
Prakhar Agrawal	445	177
Tanmay Gangwar	2133	227
Aditya Kukreja	1772	635
Eknor Singh	3574	1243
Aditya Gupta	14275	1326

**547 JEE Advanced Selections in 2020**

**JOIN NOW**



## Study Materials

- [JEE Main & Advanced – Free Study Material](#)
- [NEET UG – Free Study Material](#)
- [NCERT Solutions for Class 1 to 12](#)
- [NCERT Books PDF for Class 1 to 12](#)
- [ICSE & ISC Free Study Material](#)
- [Free Study Material for Kids Learning \(Grade 1 to 5\)](#)
- [Olympiad Free Study Material](#)
- [Reference Books \(RS Aggarwal, RD Sharma, HC Verma, Lakhmir Singh, Exemplar and More\)](#)
- [Previous Year Question Paper CBSE & State Boards](#)
- [Sample Papers](#)
- [Access All Free Study Material Here](#)

## JEE-Main-20-07-2021-Shift-2 (Memory Based)

### PHYSICS

**Question:** In a series LCR circuit,  $R = 5\Omega$ ,  $L = 0.5\text{mH}$ ,  $C = 2.5\mu\text{F}$ . The RMS value of external voltage is 250 V. Find the power dissipated if circuit is in Resonance

**Answer:** 12500 W

**Solution:**

$$\text{Power} = V_{rms} I_{rms} \left( \frac{R}{Z} \right)$$

$$Z = R \text{ (at resonance)}$$

$$\text{Power} = 250 \times \frac{250}{5} \times \frac{5}{5}$$

$$= 12500 \text{ W}$$

**Question:** The wavelength of sodium lamp is observed to be  $2886\text{\AA}$  from earth & original wavelength was  $2880\text{\AA}$ . Find speed of galaxy.

**Options:**

(a)  $3 \times 10^5 \text{ ms}^{-1}$

(b)  $4 \times 10^5 \text{ ms}^{-1}$

(c)  $6.25 \times 10^5 \text{ ms}^{-1}$

(d) None

**Answer:** (c)

**Solution:**  $\Delta\lambda = 2886 - 2880 = 6\text{\AA}$

Using doppler shift,

$$-\frac{\Delta\lambda}{\lambda} = -\frac{V_{\text{radial}}}{C}$$

$$\Rightarrow V_{\text{radial}} = C \left( \frac{\Delta\lambda}{\lambda} \right) = 3 \times 10^8 \times \left( \frac{6 \times 10^{-10}}{2880 \times 10^{-10}} \right)$$

$$= 6.25 \times 10^5 \text{ ms}^{-1}$$

Hence, speed of galaxy =  $6.25 \times 10^5 \text{ ms}^{-1}$ .

**Question:** A body is under the influence of a force such that it delivers a constant power P. The variation of position with time of body as

**Options:**

(a)  $t^{\frac{1}{2}}$

(b)  $t^{\frac{3}{2}}$

(c)  $t^{\frac{5}{2}}$

(d) None

**Answer:** (b)

**Solution:** Power = P

$$F v = P$$

$$m \left( \frac{dv}{dt} \right) \cdot v = P$$

$$\Rightarrow \int_0^v v dv = \int_0^t \frac{P}{m} \cdot dt$$

$$\Rightarrow v = \sqrt{\frac{2P}{m} t}$$

$$\Rightarrow \frac{dx}{dt} = \sqrt{\frac{2P}{m} t} \quad [\text{assuming at } t=0, x=0 \text{ \& } v=0]$$

$$\Rightarrow \int_0^x dx = \int_0^t \sqrt{\frac{2P}{m} t} \cdot dt$$

$$\Rightarrow t = x = \sqrt{\frac{2P}{m} \frac{2}{3}} t^{3/2}$$

$$\Rightarrow x \propto t^{3/2}$$

**Question:** When a metal is illuminated by light of wavelength  $\lambda$ , the stopping potential is  $V_0$  and for wavelength  $2\lambda$ , it is  $3V_0$ . Then the threshold wavelength is?

**Options:**

(a)  $\frac{2\lambda}{3}$

(b)  $\frac{4\lambda}{5}$

(c)  $\frac{\lambda}{3}$

(d)  $\frac{5\lambda}{2}$

**Answer:** (b)

**Solution:**  $eV_0 = \frac{hc}{\lambda} - \phi \dots (1)$

$$3eV_0 = \frac{hc}{2\lambda} - \phi \dots (2)$$

Multiply by 3 in equation (1)

$$3eV = \frac{3hc}{\lambda} - 3\phi \dots (3)$$

Equation (3) – (2)

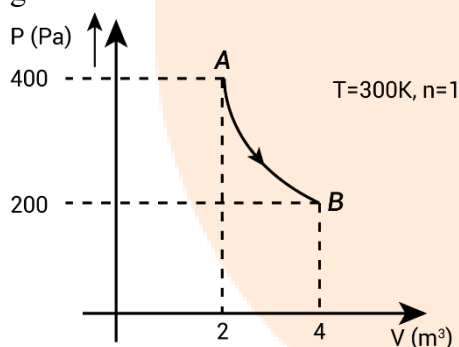
$$\frac{3hc}{\lambda} - \frac{hc}{2\lambda} - 2\phi = 0$$

$$\frac{5hc}{2\lambda} = 2\phi = \frac{2hc}{\lambda_0}$$

$$\frac{5}{4} \frac{hc}{\lambda} = \frac{hc}{\lambda_0}$$

$$\lambda_0 = \frac{4\lambda}{5}$$

**Question:** A gas is taken through an isothermal process as shown. Find the work done by the gas



**Options:**

- (a) 240 J
- (b) 360 J
- (c) 560 J
- (d) None

**Answer:** (c)

**Solution:**  $Work = PV \ln \frac{v_2}{v_1}$

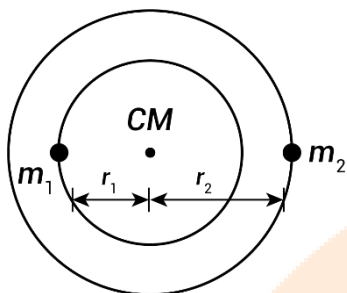
$$= 400 \times 2 \ln \frac{4}{2}$$

$$= 800 \ln 2$$

$$= 800 \times 0.7$$

= 560J

**Question:** Two stars of masses  $m_1$  and  $m_2$  form a binary system, revolving around each other in circular orbits of radii  $r_1$  and  $r_2$  respectively. Time period of revolution for this system is



**Options:**

(a)  $2\pi\sqrt{\frac{(r_1+r_2)^3}{G(m_1+m_2)}}$

(b)  $2\pi\sqrt{\frac{(r_1+r_2)r_2^2}{G(m_1+m_2)}}$

(c)  $\frac{2\pi(r_1+r_2)^{\frac{3}{2}}}{\sqrt{G(m_1+m_2)}}$

(d)  $\frac{2\pi(r_1+r_2)^2 r_1}{G(m_1+m_2)}$

**Answer:** (c)

**Solution:**

$$\frac{Gm_1m_2}{(r_1+r_2)^2} = \frac{m_1v_1^2}{r_1}$$

$$v_1^2 = \frac{Gm_2r_1}{(r_1+r_2)^2} \Rightarrow v_1 = \frac{\sqrt{Gm_2r_1}}{(r_1+r_2)}$$

$$T = \frac{2\pi r_1}{v_1} = \frac{2\pi\sqrt{r_1}(r_1+r_2)}{\sqrt{Gm_2}} \quad \dots(1)$$

By using COM concept.

$$r_1 = \frac{m_2(r_1+r_2)}{m_1+m_2}$$

Put this value of  $r_1$  in eq<sup>n</sup> (1)

We get

$$T = \frac{2\pi(r_1 + r_2)^{3/2}}{\sqrt{G(m_1 + m_2)}}$$

**Question:** Tension in a spring is  $T_1$  when length of the spring is  $L_1$  and tension is  $T_2$  when its length is  $L_2$ . The natural length of the spring is

**Options:**

(a)  $\frac{T_2 l_2 + T_1 l_1}{T_2 + T_1}$

(b)  $\frac{T_2 l_2 - T_1 l_1}{T_2 - T_1}$

(c)  $\frac{T_2 l_1 + T_1 l_2}{T_2 + T_1}$

(d)  $\frac{T_2 l_1 - T_1 l_2}{T_2 - T_1}$

**Answer:** (d)

**Solution:**

Let the natural length of wire be  $l_0$ .

Using Hooke's law,  $Y = \frac{Tl_0}{A\Delta l}$

Where,  $\Delta l = l - l_0$

We get  $l - l_0 = \frac{Tl_0}{AY}$

**Case 1:** Tension is  $T_1$  and length of wire  $l = l_1$

$$\therefore l_1 - l_0 = \frac{T_1 l_0}{AY} \quad \dots(1)$$

**Case 2:** Tension is  $T_2$  and length of wire  $l = l_2$

$$\therefore l_2 - l_0 = \frac{T_2 l_0}{AY} \quad \dots(2)$$

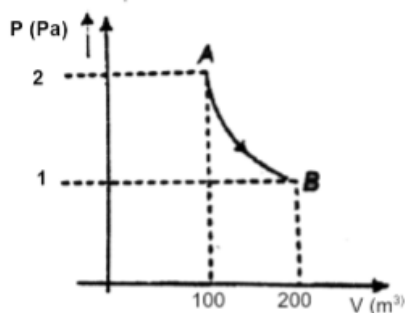
Dividing both equations

$$\frac{l_1 - l_0}{l_2 - l_0} = \frac{T_1}{T_2}$$

$$l_0 = \frac{l_1 T_2 - l_2 T_1}{T_2 - T_1}$$

**Question:** Find work done in the process  $A \rightarrow B$  (isothermal) by gas?





**Options:**

- (a)  $100 \ln 2$
- (b)  $-100 \ln 2$
- (c)  $200 \ln 2$
- (d)  $-200 \ln 2$

**Answer:** (c)

**Solution:**

Work done by gas in isothermal process is  $\Rightarrow W = nRT \ln \left( \frac{V_2}{V_1} \right)$

$$W = P_1 V_1 \ln \left( \frac{V_2}{V_1} \right)$$

$$W = 2 \times 100 \ln \left( \frac{200}{100} \right)$$

$$W_{gas} = 200 \ln 2$$

**Question:** A body rotating have an angular velocity of 300 rpm and its angular acceleration is  $\frac{\pi}{20} (rad / s^2)$ . Resolutions done by this body in 10 sec is

**Options:**

- (a)  $\frac{205}{4} (rev)$
- (b)  $\frac{307}{3} (rev)$
- (c)  $75 (rev)$
- (d)  $\frac{189}{2} (rev)$

**Answer:** (a)

**Solution:**

$$\omega = 300 \text{ rpm} = 300 \times \frac{2\pi}{60} = 10 \pi \text{ rad / sec}$$

$$\alpha = \frac{\pi}{20} \text{ rad} / \text{s}^2$$

$$\theta = \omega T + \frac{1}{2} \alpha T^2$$

$$\theta = 10\pi \times 10 + \frac{1}{2} \times \frac{\pi}{20} \times (10)^2 = 102.5 \pi \text{ rad}$$

$$\theta = \frac{102.5 \pi}{2\pi} \text{ rev} = \frac{205}{4} \text{ rev}$$

**Question:** A boy at the airport takes time  $t_1$  to walk on escalator if the escalator is at rest and takes time  $t_2$  if boy is at rest on moving escalator. Then find the time taken to walk on the escalator for same path?

**Options:**

(a)  $|t_1 - t_2|$

(b)  $\frac{t_1 + t_2}{2}$

(c)  $\frac{2t_1 t_2}{t_1 + t_2}$

(d)  $\frac{t_1 t_2}{t_1 + t_2}$

**Answer:** (d)

**Solution:**

Let distance to be traversed =  $x$

$$\text{Speed of escalator} = \frac{x}{t_1}$$

$$\text{Speed of boy walking} = \frac{x}{t_2}$$

When the boy is walking on a moving escalator, speed is  $= x \left( \frac{1}{t_2} + \frac{1}{t_1} \right) = x \left( \frac{t_1 + t_2}{t_1 t_2} \right)$

$$\text{Time taken is distance by speed} = \frac{x}{v} = \frac{t_1 t_2}{t_1 + t_2}$$

$$T = \frac{t_1 t_2}{t_1 + t_2}$$

**Question:** A particle is performing SHM along x-axis, such that its velocity is  $v_1$ , when its displacement from mean position is  $x_1$  and  $v_2$  when its displacement from mean position is  $x_2$ . Time period of oscillation is

**Options:**

$$(a) \frac{1}{2\pi} \sqrt{\frac{x_2 - x_1}{v_1 - v_2}}$$

$$(b) 2\pi \sqrt{\frac{(x_1^2 + x_2^2)}{(v_2^2 + v_1^2)}}$$

$$(c) 2\pi \sqrt{\frac{(x_2^2 - x_1^2)}{(v_1^2 - v_2^2)}}$$

$$(d) 2\pi \sqrt{\frac{(x_1 x_2 - x_1^2)}{(v_1 v_2 - v_1^2)}}$$

**Answer:** (c)

**Solution:**

$$v = \omega \sqrt{A^2 - x^2}$$

$$v_1 = \omega \sqrt{A^2 - x_1^2}$$

$$\Rightarrow v_1^2 = \omega^2 (A^2 - x_1^2) \quad \dots(i)$$

$$v_2 = \omega \sqrt{A^2 - x_2^2}$$

$$v_2^2 = \omega^2 (A^2 - x_2^2)$$

$$\Rightarrow \left( \frac{v_1^2}{\omega^2} + x_2^2 \right) = A^2 \quad \dots(ii)$$

From (i) and (ii)

$$v_1^2 = \omega^2 \left( \frac{v_2^2}{\omega^2} + x_2^2 - x_1^2 \right)$$

$$v_1^2 = v_2^2 + \omega^2 (x_2^2 - x_1^2)$$

$$\Rightarrow \omega^2 = \frac{v_1^2 - v_2^2}{x_2^2 - x_1^2}$$

$$\Rightarrow \omega = \sqrt{\frac{v_1^2 - v_2^2}{x_2^2 - x_1^2}}$$

We know that

$$T = \frac{2\pi}{\omega}$$

$$\Rightarrow T = 2\pi \sqrt{\frac{x_2^2 - x_1^2}{v_1^2 - v_2^2}}$$

**Question:** An electron ( $9 \times 10^{-31} \text{ kg}$ ,  $1.6 \times 10^{-19} \text{ C}$ ) is accelerated by a voltage of 40 kV. What is the wavelength?

$h = 6.6 \times 10^{-34} \text{ SI units}$ .

**Answer:**  $6.15 \times 10^{-12}$

**Solution:**

$$\lambda = \frac{h}{\sqrt{2M_e eV}}$$

$$\lambda = \frac{6.6 \times 10^{-34}}{\sqrt{2 \times 9 \times 10^{-31} \times 1.6 \times 10^{-19} \times 40 \times 10^3}}$$

$$\lambda = \frac{6.6 \times 10^{-34}}{\sqrt{1152 \times 10^{-47}}}$$

$$\lambda = 0.615 \times 10^{-34+23}$$

$$\lambda = 6.15 \times 10^{-12} \text{ m}$$

**Question:** For a medium, the magnetic susceptibility is 499. The permeability of free space is  $4\pi \times 10^{-7}$  SI units. Then the permeability of the medium is?

**Options:**

(a)  $2\pi \times 10^{-4}$  SI units

(b)  $2\pi \times 10^{-7}$  SI units

(c)  $\frac{5\pi}{4} \times 10^{-7}$  SI units

(d)  $\frac{4\pi}{5} \times 10^{-4}$  SI units

**Answer:** (a)

**Solution:**

$$\chi_M = \mu_r - 1$$

$$\mu_r = 499 + 1 = 500$$

We know that

$$\mu = \mu_r \mu_0$$

$$\mu = 500 \times 4\pi \times 10^{-7}$$

$$\mu = 2\pi \times 10^{-4} \text{ SI units}$$

**Question:** A particle has 4 times its initial kinetic energy. Find the percentage change in momentum?

**Options:**

(a) 100%

(b) 200%

(c) 300%

(d) 400%

**Answer:** (a)

**Solution:**

Initial K.E. =  $k$

Final K.E. =  $4k$

$$k = \frac{P^2}{2m}$$

$$\Rightarrow P = \sqrt{2mk}$$

$$\Delta P = \sqrt{2m(4k)} - \sqrt{2mk}$$

$$= 2\sqrt{2mk} - \sqrt{2mk}$$

$$= \sqrt{2mk}$$

$$\% \text{ change} = \frac{\Delta P}{P} \times 100 = \frac{\sqrt{2mk}}{\sqrt{2mk}} \times 100 = 100\%$$

**Question:** Electrons with de-Broglie wavelength  $\lambda$ , fall on a target in an x-ray tube. The cut-off wavelength of emitted x-ray is

**Options:**

(a)  $\frac{2mc\lambda^2}{h}$

(b)  $\frac{2h}{mc}$

(c)  $\frac{h}{mc}$

(d) None

**Answer:** (a)

**Solution:** de-Broglie wavelength =  $\lambda$

$$\Rightarrow mv = \frac{h}{\lambda}$$

$$\Rightarrow \frac{1}{2}mv^2 = \left(\frac{h}{\lambda}\right)^2 \times \frac{1}{2m}$$

Energy of corresponding to cut-off wavelength is equal to

$$\frac{hc}{\lambda_0} = \frac{1}{2}mv^2 = \frac{h^2}{\lambda^2} \times \frac{1}{2m}$$

$$\Rightarrow \lambda_0 = \frac{\lambda^2(2m)c}{h}$$

$$\text{Hence, cut-off wavelength} = \frac{2mc\lambda^2}{h}$$

**Question:** An element has  $\frac{1}{16}$  of initial activity in 20 sec. Half life of the nuclei is

**Options:**

- (a) 5 sec
- (b)  $\frac{4}{3}$  sec
- (c) 2.5 sec
- (d) 7.5 sec

**Answer:** (a)

**Solution:**

$$N = N_0 e^{-\lambda t}$$

$$\Rightarrow \frac{N_0}{16} = N_0 e^{-\lambda t}$$

$$\Rightarrow 2^{-4} = e^{-\lambda t}$$

$$\Rightarrow -4 \ln 2 = -\lambda t$$

$$\Rightarrow -4 \frac{\ln 2}{\lambda} = -t$$

$$\Rightarrow t = 4 \left( \frac{\ln 2}{\lambda} \right) = 4 \times t_{1/2}$$

$$\Rightarrow t_{1/2} = 5 \text{ sec.}$$

**Question:** A solid cylinder and ring are released from rest in top of inclined plane. Find ratio of their velocities when they reach bottom, assuming pure rolling

**Options:**

- (a)  $\sqrt{\frac{3}{5}}$
- (b)  $\sqrt{\frac{5}{3}}$
- (c)  $\sqrt{\frac{7}{5}}$
- (d)  $\sqrt{\frac{4}{3}}$

**Answer:** (d)

**Solution:** Loss in PE in gain in K.E

$$\Rightarrow mgh = \frac{1}{2} mv^2 + \frac{1}{2} I \frac{v^2}{R^2}$$

$$\Rightarrow v = \sqrt{\frac{2mgh}{m + \frac{I}{R^2}}}$$

$$\Rightarrow v_{cylinder} = \sqrt{\frac{2mgh}{m + \frac{mR^2}{2R^2}}} = \sqrt{\frac{4gh}{3}} \quad \text{and} \quad v_{ring} = \sqrt{\frac{2mgh}{m + \frac{mR^2}{R^2}}} = \sqrt{gh}$$

$$\Rightarrow \frac{v_{cylinder}}{v_{ring}} = \sqrt{\frac{4}{3}}$$

**Question:** The angle of Dip in a plane at an angle of  $30^\circ$  with Geographical meridian is  $45^\circ$ . The value of true Dip is

**Options:**

(a)  $\tan^{-1}\left(\frac{\sqrt{3}}{2}\right)$

(b)  $\tan^{-1}\left(\frac{1}{2}\right)$

(c)  $30^\circ$

(d)  $60^\circ$

**Answer:** (a)

**Solution:**

Angle of dip

$$\tan \theta = \frac{V}{H} \quad \dots(1)$$

For  $30^\circ$  to meridian

$$\tan 45^\circ = \frac{V}{H \cos 30^\circ} \Rightarrow \frac{V}{H} = \cos 30^\circ \quad \dots(2)$$

$$\tan \theta = \cos 30^\circ \quad (\text{By comparing})$$

$$\tan \theta = \frac{\sqrt{3}}{2}$$

$$\theta = \tan^{-1}\left(\frac{\sqrt{3}}{2}\right)$$

## JEE-Main-20-07-2021-Shift-2 (Memory Based)

### CHEMISTRY

**Question:** Which gas retard the rate of photosynthesis?

**Options:**

- (a) CO
- (b) NO<sub>2</sub>
- (c) CO<sub>2</sub>
- (d) CFC

**Answer:** (b)

**Solution:** Higher concentration of NO<sub>2</sub> damage the leaves of plants and retard the rate of photosynthesis

**Question:** Sodium will not react normally with

**Options:**

- (a) Ammonia gas
- (b) Ethyne
- (c) But-2-yne
- (d) All of these

**Answer:** (c)

**Solution:** Sodium will not react with But-2-yne

**Question:** The hybridisation of NO<sub>2</sub><sup>-</sup>, NO<sub>2</sub><sup>+</sup> and NH<sub>4</sub><sup>+</sup> are respectively

**Options:**

- (a) sp<sup>2</sup>, sp, sp<sup>3</sup>
- (b) sp, sp, sp<sup>3</sup>
- (c) sp<sup>2</sup>, sp, sp
- (d) sp<sup>2</sup>, sp<sup>2</sup>, sp<sup>3</sup>

**Answer:** (a)

**Solution:**

Hybridisation of N in NO<sub>2</sub><sup>-</sup> = sp<sup>2</sup>

Hybridisation of N in NO<sub>2</sub><sup>+</sup> = sp

Hybridisation of N in NH<sub>4</sub><sup>+</sup> = sp<sup>3</sup>

**Question:** What is added with HNO<sub>3</sub> in carius method?

**Options:**

- (a) Silver nitrate
- (b) Copper nitrate
- (c) Copper sulphate
- (d) None of these

**Answer:** (a)



**Solution:** In the Carius method, a known mass of the compound is heated with concentrated nitric acid in the presence of silver nitrate in a hard glass tube. The hard glass is known as Carius tube.

**Question:**  $4s^2 4p^1$ : Diagonally next period in p-block. Identify element

**Options:**

- (a) Al
- (b) Sb
- (c) Cd
- (d) Sn

**Answer:** (d)

**Solution:** Ga has electronic configuration  $4s^2 4p^1$

Sn is present diagonally to Ga in the next period in p-block.

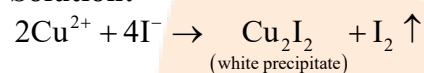
**Question:**  $\text{Cu}^{2+}$  salts react with KI and form:

**Options:**

- (a)  $\text{Cu}_2\text{I}_2$
- (b)  $\text{CuI}$
- (c)  $\text{CuI}_2$
- (d) None of these

**Answer:** (a)

**Solution:**



**Question:** In nitration,  $\text{HNO}_3$  and  $\text{H}_2\text{SO}_4$  act as:

**Options:**

- (a) Both acid
- (b) Both base
- (c)  $\text{HNO}_3$  : Acid &  $\text{H}_2\text{SO}_4$  : Base
- (d)  $\text{HNO}_3$  : Base &  $\text{H}_2\text{SO}_4$  : Acid

**Answer:** (d)

**Solution:** Nitration is an electrophilic substitution reaction, in its first step  $\text{HNO}_3$  takes a proton from sulphuric acid and then forms  $-\text{NO}_2^+$ .

So, in the nitrating mixture  $\text{HNO}_3$  acts as a base, and  $\text{H}_2\text{SO}_4$  acts as an acid.

**Question:** The common monomer present in novolac and bakelite is:

**Options:**

- (a) Acetaldehyde
- (b) Methanal
- (c) Phenol
- (d) Ethylene glycol

**Answer:** (b)

**Solution:** Formaldehyde (Methanal) is the common monomer that is present in both novolac and bakelite.

**Question:** Rate of hydrolysis : Ester, Acid chloride, Acid anhydride

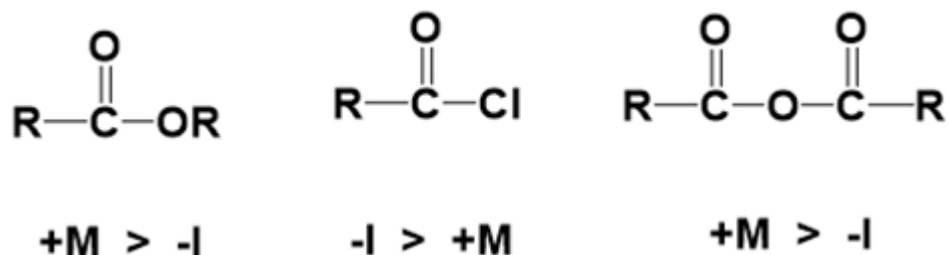
**Options:**

- (a) Acid chloride > Acid anhydride > Ester

- (b) Ester > Acid chloride > Acid anhydride  
 (c) Acid anhydride > Ester > Acid chloride  
 (d) Acid chloride < Acid anhydride < Ester

**Answer:** (a)

**Solution:**



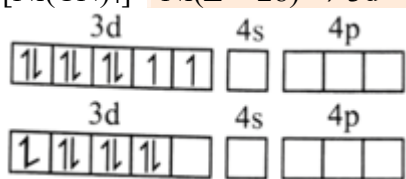
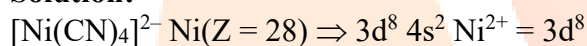
**Question:** What is the difference in the number of unpaired electrons in  $[\text{NiCl}_4]^{2-}$  and  $[\text{Ni}(\text{CN})_4]^{2-}$

**Options:**

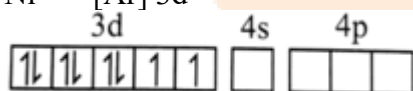
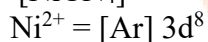
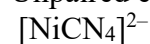
- (a) 4  
 (b) 1  
 (c) 0  
 (d) 2

**Answer:** (d)

**Solution:**



Unpaired electrons = 0



Unpaired electrons = 2

Difference between unpaired electrons = 2

**Question:** Radioactive substance becomes 1/16th of original in 80 minutes, Find the half-life

**Options:**

- (a) 20 min  
 (b) 40 min  
 (c) 60 min  
 (d) 80 min

**Answer:** (a)

**Solution:**

$$k = \frac{1}{t} \times 2.303 \log \frac{1}{1/16}$$

$$k = \frac{1}{80} \times 2.303 \log 16$$

$$k = \frac{1}{80} \times 2.303 \times 4 \log 2 = 0.035 \text{ min}^{-1}$$

$$t_{1/2} = \frac{0.693}{0.035 \text{ min}^{-1}} = 20 \text{ min}$$

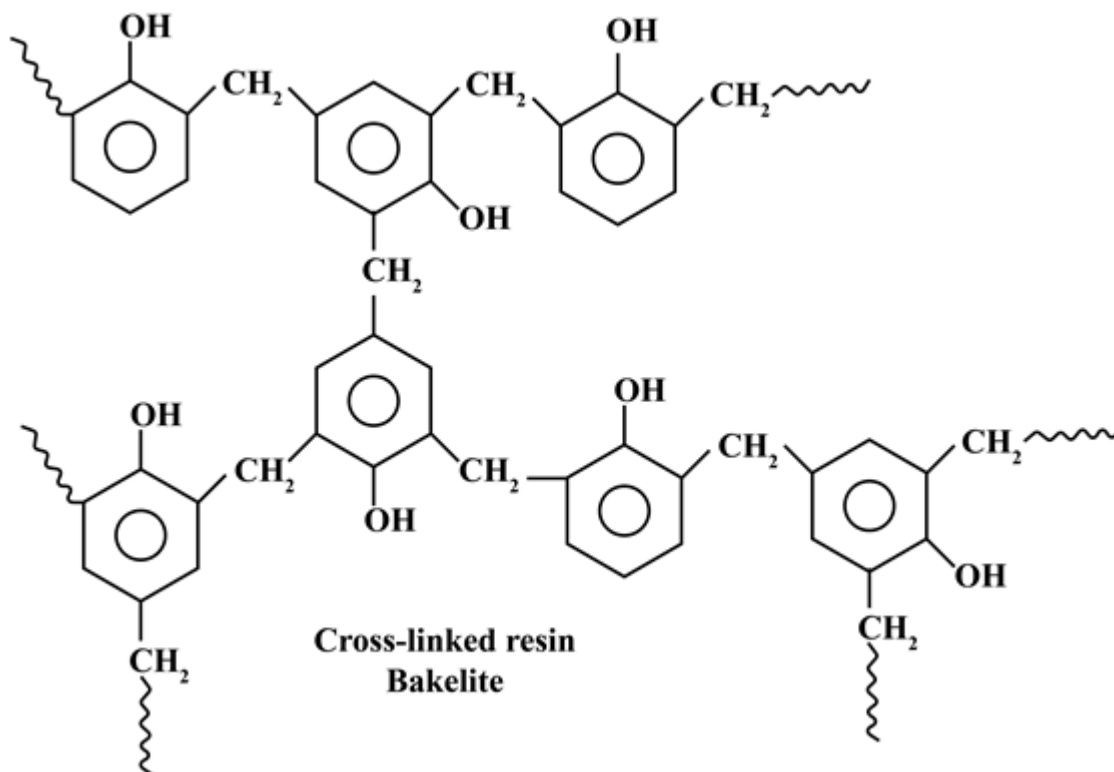
**Question:** Bakelite is formed by cross linking of which of the following?

**Options:**

- (a) Novolac
- (b) Buna-s
- (c) Dacron
- (d) PHBV

**Answer:** (a)

**Solution:**



(Formed by Novolac)

**Question:** In FCC, 50 % tetrahedral void is filled. Find the effective number of atoms in the cell if made using the same atoms?

**Options:**

- (a) 2
- (b) 4
- (c) 6
- (d) 8

**Answer:** (d)

**Solution:**

Number of atoms in FCC unit cell = 4

Total number of tetrahedral voids =  $2 \times 4 = 8$

Given that 50% tetrahedral voids are occupied by atoms, i.e.,  
 Number of atoms present in tetrahedral voids = 50% of 8 = 4  
 Therefore, the effective number of atoms in the cell = 4 + 4 = 8

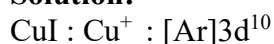
**Question:** Which of the following do not have magnetic moment of 1.73 B.M?

**Options:**

- (a)  $O_2^+$
- (b)  $O_2^-$
- (c)  $[Cu(NH_3)_4]Cl_2$
- (d)  $CuI$

**Answer:** (d)

**Solution:**



No unpaired electrons

**Question:** If equimolar mixture of NaOH and  $Na_2CO_3$  weight 4g then weight of NaOH is:

**Options:**

- (a) 1.595
- (b) 1.095
- (c) 2.904
- (d) 2.945

**Answer:** (b)

**Solution:**

Given equimolar mixture of NaOH and  $Na_2CO_3$

Mass of mixture = 4g

Let mass of NaOH = w

$$\Rightarrow \frac{w}{40} = \frac{4-w}{106}$$

$$\Rightarrow w = \frac{160}{146} = 1.0958 \text{ g}$$

**Question:**  $PCl_5 \rightarrow PCl_3 + Cl_2$

The above first order reaction has initial moles as 10 and after 20 min final moles are 2. Find the rate constant. (Given:  $\log 5 = 0.693$ )

**Options:**

- (a)  $0.08 \text{ min}^{-1}$
- (b)  $0.16 \text{ min}^{-1}$
- (c)  $0.24 \text{ min}^{-1}$
- (d)  $0.02 \text{ min}^{-1}$

**Answer:** (a)

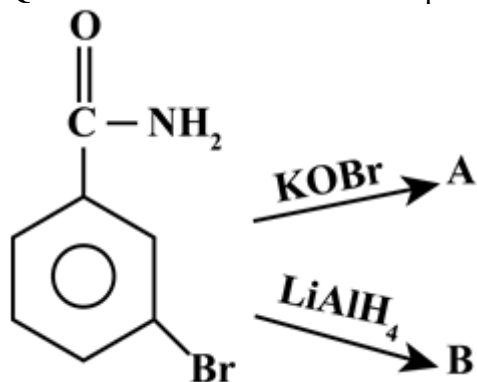
**Solution:**

$$K = \frac{1}{t} \times 2.303 \log \frac{[A_o]}{[A_t]}$$

$$K = \frac{1}{20} \times 2.303 \log \frac{10}{2}$$

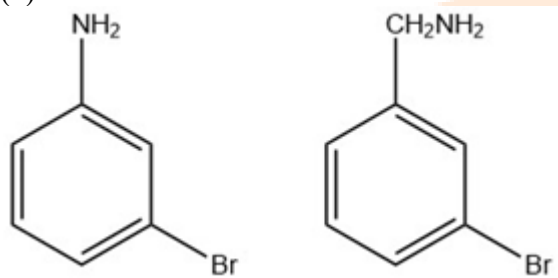
$$K = \frac{1}{20} \times 2.303 \log 5 = 0.08 \text{ min}^{-1}$$

**Question:** What are A and B respectively in the following reactions?

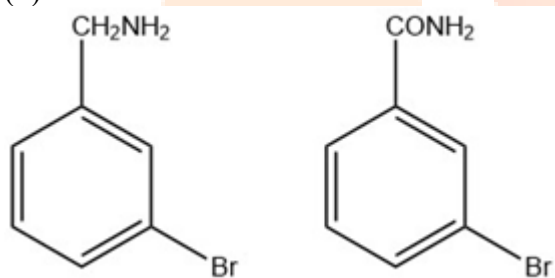


**Options:**

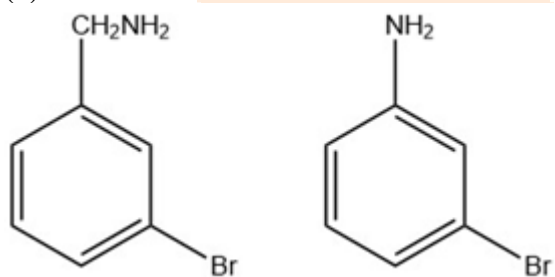
(a)



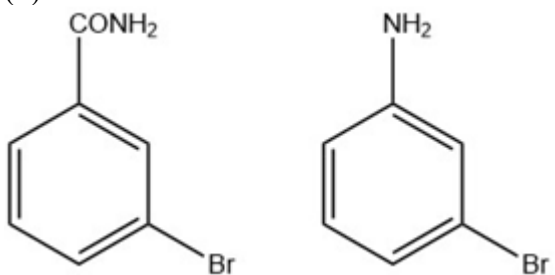
(b)



(c)

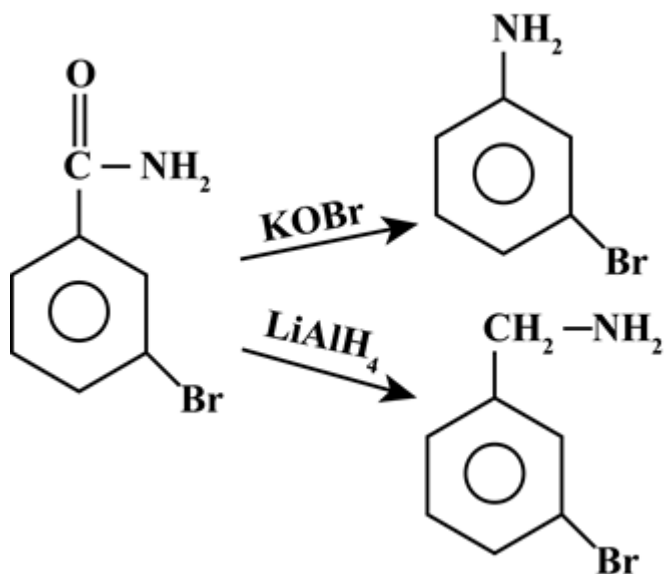


(d)



**Answer:** (a)

**Solution:**



**Question:** Spin only magnetic moment of  $\text{Fe}^{2+}$  with weak field ligand is

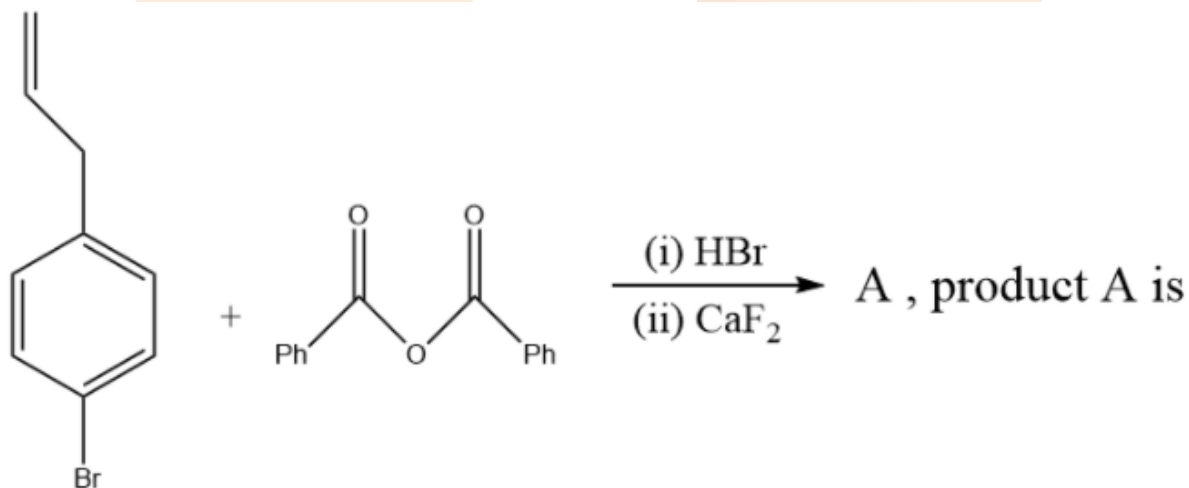
**Options:**

- (a) 4.90
- (b) 1.73
- (c) 2.80
- (d) 0

**Answer:** (a)

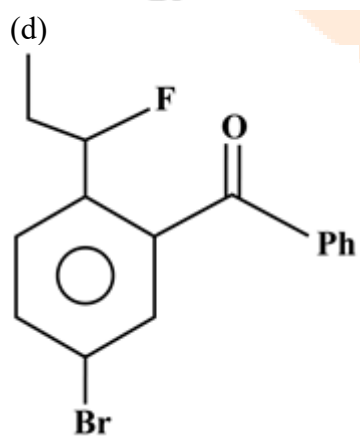
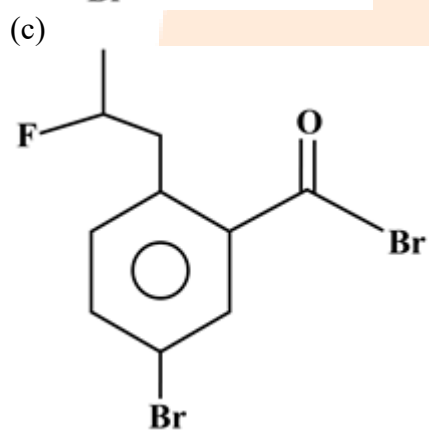
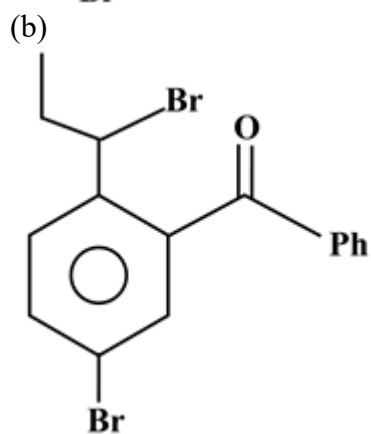
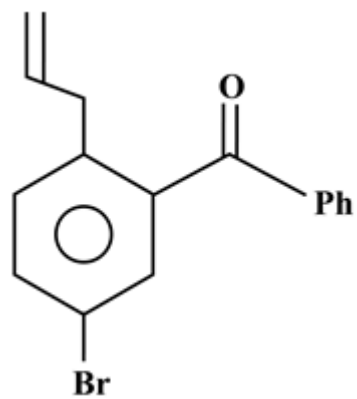
**Solution:**  $\text{Fe}^{2+}$  (with weak field ligand) has 4 unpaired electrons ( $t_{2g}^4 e_g^2$ ), therefore spin only magnetic moment is 4.90 BM

**Question:**

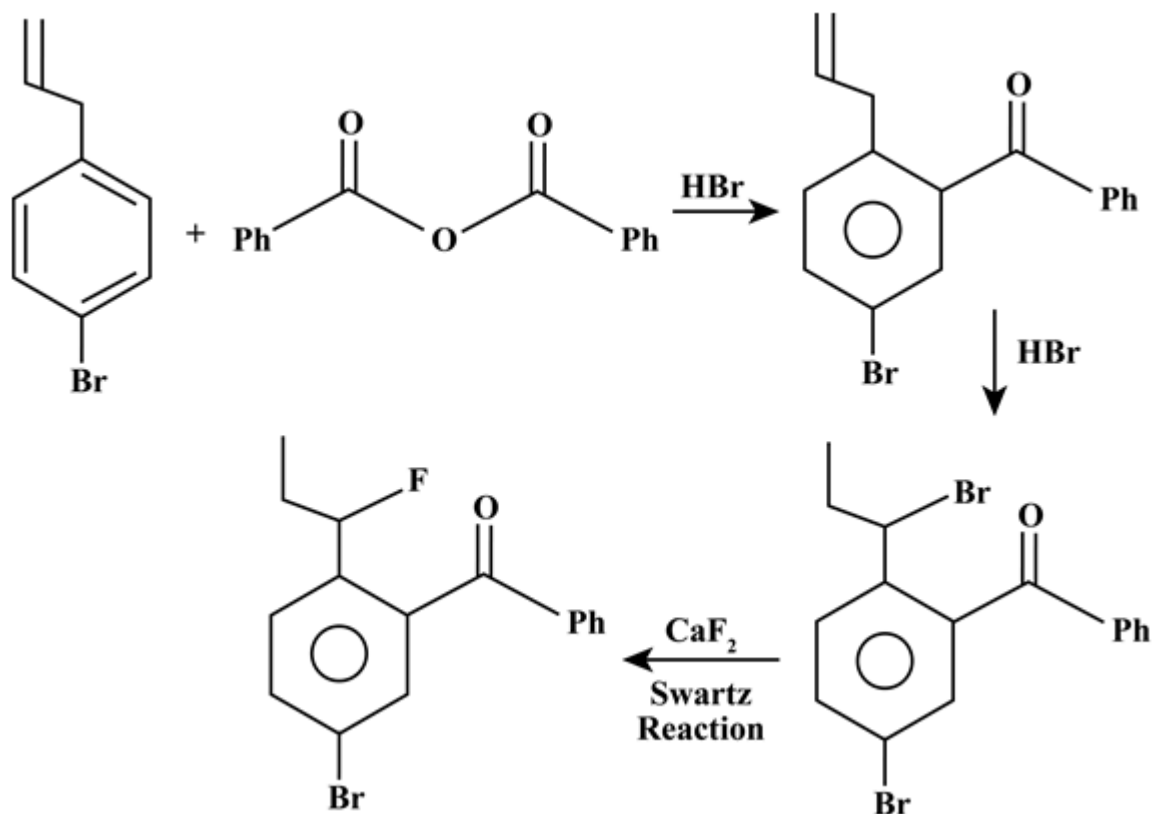


**Options:**

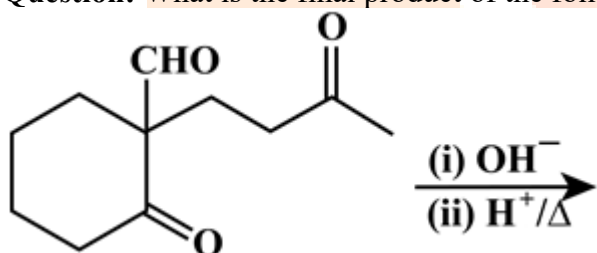
- (a)



Answer: (d)  
Solution:

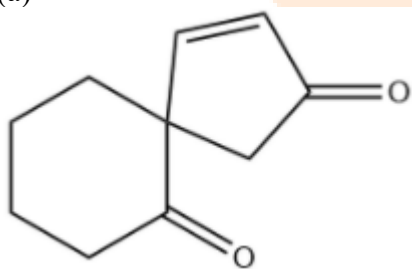


**Question:** What is the final product of the following reaction?



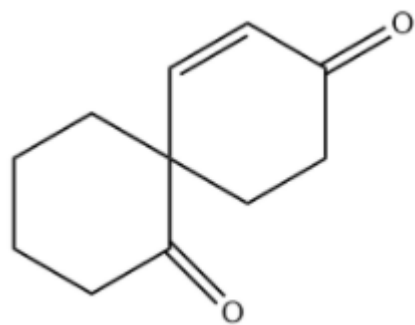
**Options:**

(a)

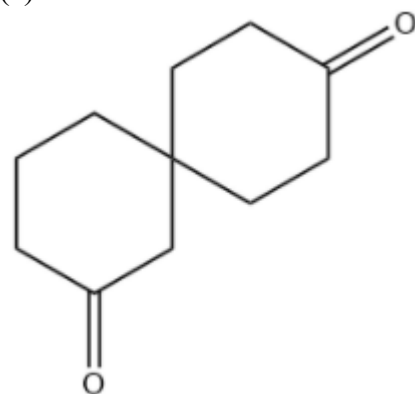


(b)

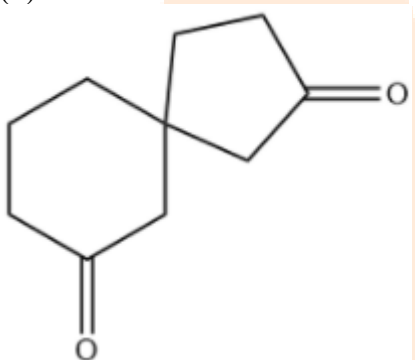




(c)

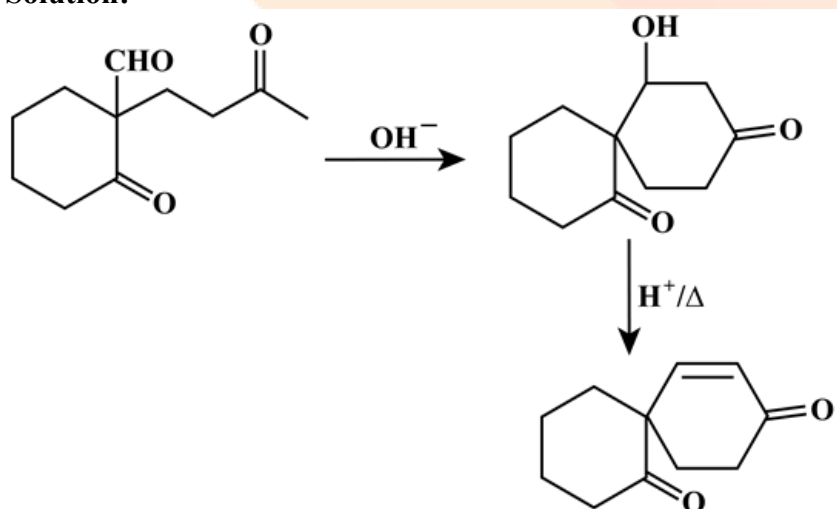


(d)



**Answer: (b)**

**Solution:**





## JEE-Main-20-07-2021-Shift-2 (Memory Based)

### MATHEMATICS

**Question:** Probability of only one of A and B is  $1 - k$

Probability of only one of A and C is  $1 - 2k$

Probability of only one of B and C is  $1 - k$

$$P(A \cap B \cap C) = k^2, K \in (0, 1).$$

Find  $P(A \cup B \cup C)$  is

**Options:**

(a)  $> \frac{1}{2}$

(b)  $\left[ \frac{1}{8}, \frac{1}{4} \right]$

(c)  $< \frac{1}{4}$

(d)

**Answer:** (a)

**Solution:**

$$P(A) + P(B) - 2P(A \cap B) = 1 - k \quad \dots(1)$$

$$P(A) + P(C) - 2P(A \cap C) = 1 - 2k \quad \dots(2)$$

$$P(B) + P(C) - 2P(B \cap C) = 1 - k \quad \dots(3)$$

$$P(A \cap B \cap C) = k^2$$

$$P(A \cap B \cap C) = P(A) + P(B) + P(C) - P(A \cap B) - P(B \cap C) + P(C \cap A) + P(A \cap B \cap C)$$

Add (1), (2) & 3

$$2(P(A) + P(B) + P(C) - P(A \cap B) - P(B \cap C) - P(C \cap A))$$

$$= 3 - 4k$$

$$P(A \cup B \cup C) = \frac{3 - 4k}{2} + k^2$$

$$= k^2 - 2k + \frac{3}{2}$$

$$= (k - 1)^2 + \frac{1}{2} > \frac{1}{2}$$

**Question:** If  $a, b, 7, 10, 11, 15$ , Mean = 10 and Variance =  $\frac{20}{3}$ . Find  $a$  and  $b$ .

**Options:**

- (a)
- (b)
- (c)
- (d)

**Answer:** 8, 9

**Solution:**

$$\frac{a+b+43}{6} = 10 \Rightarrow a+b = 17$$

$$\frac{a^2+b^2+495}{6} - 100 = \frac{20}{3} \Rightarrow a^2+b^2 = 145$$

$$\Rightarrow (a,b) = (9,8) \text{ or } (8,9)$$

**Question:**  $g(t) = \begin{cases} \max(t^3 + 6t^2 + 9t - 3, 0); & t \in [0, 3] \\ 4 - t; & t \in (3, 4) \end{cases}$  Find points of non-differentiability.

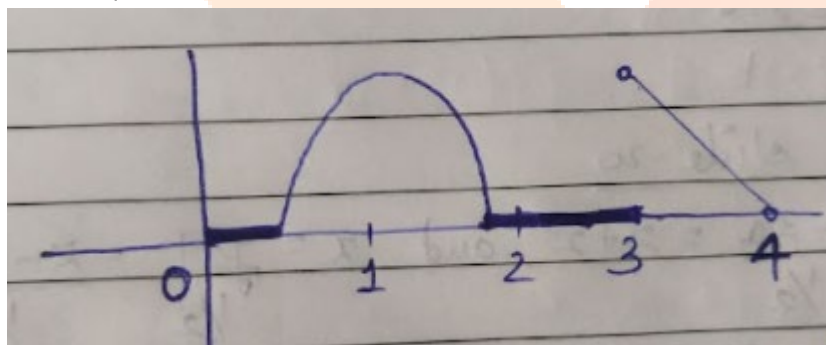
**Options:**

- (a)
- (b)
- (c)
- (d)

**Answer:** ()

**Solution:**

$$g(t) = \begin{cases} \max(t^3 + 6t^2 + 9t - 3, 0); & t \in [0, 3] \\ 4 - t; & t \in (3, 4) \end{cases}$$



$\therefore$  Point of non-differentiability is 3

**Question:** If  $\triangle ABC$  is right angled triangle with sides  $a, b$  and  $c$  and smallest angle  $\theta$ . If

$\frac{1}{a}, \frac{1}{b}$  and  $\frac{1}{c}$  are also the sides of right angled triangle, then find  $\sin \theta$

**Options:**

- (a)
- (b)

(c)

(d)

**Answer: ( )**

**Solution:**

Let  $a$  be smallest side &  $c$  be largest side

$$\therefore c^2 = a^2 + b^2 \text{ and } \frac{a}{\sin \theta} = c \quad \dots(1)$$

$$\text{Also, } \frac{1}{a^2} = \frac{1}{b^2} + \frac{1}{c^2} \Rightarrow b^2 = \frac{a^2 c^2}{c^2 - a^2} = c^2 - a^2$$

$$\Rightarrow a^2 c^2 = (c^2 - a^2)^2 = a^4 + c^4 - 2a^2 c^2$$

$$\Rightarrow a^4 + c^4 - 3a^2 c^2 = 0$$

$$\Rightarrow \left(\frac{a}{c}\right)^4 - 3\left(\frac{a}{c}\right)^2 + 1 = 0$$

$$\Rightarrow \left(\left(\frac{a}{c}\right)^2 - 1\right)^2 = \left(\frac{a}{c}\right)^2$$

$$\Rightarrow \left(\frac{a}{c}\right)^2 - \left(\frac{a}{c}\right) - 1 = 0$$

$$\Rightarrow \frac{a}{c} = \frac{1 + \sqrt{5}}{2} = \sin \theta$$

**Question:** If  $\log_x x_{\left(\frac{1}{2}\right)} + \log_x x_{\left(\frac{1}{3}\right)} + \dots$  upto 21 terms = 504. Find  $x$ .

**Options:**

(a)

(b)

(c)

(d)

**Answer: ( )**

**Solution:**

$$\log_x x(2 + 3 + \dots + 22) = 504$$

$$\log_x x\left(\frac{21}{2}(4 + 20)\right) = 504$$

$$\log_x x(21 \times 12) = 504$$

$$\log_x x = \frac{504}{21 \times 12} = 2$$

$$x = 9^2 = 81$$

**Question:**  $\lim_{x \rightarrow 0} \frac{\alpha e^x + \beta \ln(1+x) + \gamma e^{-x}}{x \sin^2 x} = 10, \alpha + \beta + \gamma = ?$

**Options:**

- (a)
- (b)
- (c)
- (d)

**Answer:** ( )

**Solution:**

$$\lim_{x \rightarrow 0} \frac{\alpha e^x + \beta \ln(1+x) + \gamma e^{-x}}{x^2} = 10 \Rightarrow \alpha + \gamma = 0 \quad \dots(1)$$

$$\lim_{x \rightarrow 0} \frac{\alpha e^x + \frac{\beta}{1+x} - \gamma e^{-x}}{2x} = 10 \Rightarrow \alpha - \beta - \gamma = 0 \quad \dots(2)$$

$$\lim_{x \rightarrow 0} \frac{\alpha e^x - \frac{\beta}{(1+x)^2} + \gamma e^{-x}}{2} = 10 \Rightarrow \alpha - \beta + \gamma = 20 \quad \dots(3)$$

$$\therefore \beta = -20, \alpha = 10, \gamma = -10$$

$$\therefore \alpha + \beta + \gamma = -20$$

**Question:**  $\operatorname{Re} \left[ (1 + \cos \theta + 2 \sin \theta)^{-1} \right] = \frac{1}{5}$ . Find  $\theta$ .

**Options:**

- (a)
- (b)
- (c)
- (d)

**Answer:** ( )

**Solution:**

$$\operatorname{Re}(1 + \cos \theta + 2 \sin \theta)^{-1} = \frac{1}{5}$$

$$\left( \frac{1}{1 + \cos \theta + 2 \sin \theta} \right) \frac{(1 + \cos \theta - 2i \sin \theta)}{(1 + \cos \theta - 2i \sin \theta)}$$

$$\text{Real part} = \frac{1 + \cos \theta}{(1 + \cos \theta)^2 + 4 \sin^2 \theta} = \frac{1}{5}$$

$$\Rightarrow 5(1 + \cos \theta) = \left[ (1 + \cos^2 \theta + 2 \cos \theta) + 4(1 - \cos^2 \theta) \right]$$

$$\Rightarrow 5 + 5 \cos \theta = 5 - 3 \cos^2 \theta + 2 \cos \theta$$

$$\Rightarrow 3 \cos^2 \theta + 3 \cos \theta = 0$$

$$\Rightarrow \cos \theta (\cos \theta + 1) = 0$$

$$\cos \theta = 0 \text{ or } -1$$

$$\theta = (2n+1)\frac{\pi}{2} \text{ or } (2n+1)\pi$$

**Question:** In a  $\Delta ABC$ , we have  $AB = 3$ ,  $AC = 7$ ,  $BC = 5$  then find projection of  $\overline{AC}$  on  $\overline{BC}$

**Options:**

- (a)
- (b)
- (c)
- (d)

**Answer:** ( )

**Solution:**

$$\cos c = \frac{7^2 + 5^2 - 3^2}{2 \cdot 7 \cdot 5} = \frac{49 + 25 - 9}{70}$$

$$= \frac{65}{70} = \frac{13}{14}$$

$$\text{Projection} = AC \cos \theta = \frac{7 \times 13}{14} = \frac{13}{2}$$

**Question:** If  $\tan \left( 2 \tan^{-1} \left( \frac{3}{5} \right) + \sin^{-1} \left( \frac{5}{13} \right) \right) = ?$

**Options:**

- (a)
- (b)
- (c)
- (d)

**Answer:** ( )

**Solution:**

$$\tan \left[ 2 \tan^{-1} \left( \frac{3}{5} \right) + \sin^{-1} \left( \frac{5}{13} \right) \right]$$

$$= \tan \left[ \tan^{-1} \left( \frac{\frac{6}{5}}{1 - \frac{9}{25}} \right) + \tan^{-1} \left( \frac{5}{12} \right) \right]$$

$$= \tan \left[ \tan^{-1} \left( \frac{15}{8} \right) + \tan^{-1} \left( \frac{5}{12} \right) \right] = \frac{\frac{15}{8} + \frac{5}{12}}{1 - \left( \frac{15}{8} \right) \left( \frac{5}{12} \right)}$$

$$= \frac{180 + 40}{96 - 75} = \frac{220}{21}$$

**Question:** If  $y = \frac{5x+3}{6x+a}$  and  $f(f(x)) = x$  then find  $a$ .

**Options:**

- (a)
- (b)
- (c)
- (d)

**Answer:** ( )

**Solution:**

$$f(f(x)) = \frac{5 \left( \frac{5x+3}{6x+a} \right) + 3}{6 \left( \frac{5x+3}{6x+a} \right) + a} = \frac{25x+15+18x+3a}{30x+18+6ax+a^2}$$

$$= \frac{33x+15+3a}{x(30+6a)+18+a^2}$$

For  $a = -5$  above expression is  $x$

**Question:** The lines  $x = ay - 3 = z + 2$  and  $x = 2y - 2 = bz - 2$  are coplanar, find  $a$  and  $b$ ?

**Options:**

- (a)
- (b)
- (c)
- (d)

**Answer:** ( )

**Solution:**

$$x = \frac{y-3}{a} = z+2 \text{ and } x = \frac{y-2}{2} = \frac{z-2}{b}$$



$$\therefore \begin{vmatrix} 0 & 1 - \frac{3}{a} & \frac{2}{b} + 2 \\ 1 & \frac{1}{a} & 1 \\ 1 & \frac{1}{2} & \frac{1}{b} \end{vmatrix} = 0$$

$$\Rightarrow \left[ \left( 1 - \frac{3}{a} \right) - \frac{1}{a} \left( \frac{2}{b} + 2 \right) \right] = \left[ \frac{1}{b} \left( 1 - \frac{3}{a} \right) - \frac{1}{2} \left( \frac{2}{b} + 2 \right) \right]$$

$$\Rightarrow 1 - \frac{3}{a} - \frac{2}{ab} - \frac{2}{a} = \frac{1}{b} - \frac{3}{ab} - \frac{1}{b} - 1$$

$$\Rightarrow 2 - \frac{5}{a} + \frac{1}{ab} = 0$$

$$\Rightarrow 2ab - 5b + 1 = 0$$

**Question:**  $(\alpha, \beta)$  is the point on  $y^2 = 6x$ , that is closest to  $\left(3, \frac{3}{2}\right)$  find  $2(\alpha, \beta)$

**Answer:** 9

**Solution:**

$$\beta^2 = 6\alpha \quad \dots(1)$$

$$\left( \frac{\frac{3}{2} - \beta}{3 - \alpha} \right) \times \left( \frac{3}{\beta} \right) = -1 \Rightarrow 2\alpha\beta = 9 \quad \dots(2)$$

From (1) and (2),

$$\beta^2 = \frac{27}{\beta}$$

$$\Rightarrow \beta = 3, \alpha = \frac{3}{2}$$

$$\therefore 2(\alpha + \beta) = 9$$

**Question:**  $f(x) = x + 1$ . Find  $\lim_{x \rightarrow \infty} \frac{1}{n} \left( 1 + f\left(\frac{5}{n}\right) + f\left(\frac{10}{n}\right) + \dots + f\left(\frac{5(n-1)}{n}\right) \right)$

**Answer:**  $\frac{7}{2}$

**Solution:**

$$f(x) = x + 1$$

$$\begin{aligned} \therefore \lim_{n \rightarrow \infty} \frac{1}{n} \left[ 1 + f\left(\frac{5}{n}\right) + f\left(\frac{10}{n}\right) + \dots + f\left(\frac{5(n-1)}{n}\right) \right] \\ = \lim_{n \rightarrow \infty} \frac{1}{n} \left[ 1 + 1 + \frac{5}{n} + 1 + \frac{10}{n} + \dots + 1 + \frac{5(n-1)}{n} \right] \\ = \lim_{n \rightarrow \infty} 1 + \frac{5}{n^2} \{1 + 2 + \dots + (n-1)\} \\ = \lim_{n \rightarrow \infty} 1 + \frac{5}{2} = \frac{7}{2} \end{aligned}$$

**Question:**  $\int_{-\frac{\pi}{2}}^{\frac{\pi}{2}} [[x] + \sin x] dx = ?$

**Answer:**  $-\pi$

**Solution:**

$$[[x] + \sin x] = [x] + [\sin x]$$

$$\int_{-\frac{\pi}{2}}^{\frac{\pi}{2}} [[x] + \sin x] dx = \int_{-\frac{\pi}{2}}^{\frac{\pi}{2}} [x] dx + \int_{-\frac{\pi}{2}}^{\frac{\pi}{2}} [\sin x] dx$$

$$\int_{-\frac{\pi}{2}}^{-1} [x] dx + \int_{-1}^0 [x] dx + \int_0^1 [x] dx + \int_1^{\frac{\pi}{2}} [x] dx + \int_{-\frac{\pi}{2}}^0 [\sin x] dx + \int_0^{\frac{\pi}{2}} [\sin x] dx$$

$$= \int_{-\frac{\pi}{2}}^{-1} -2 dx + \int_{-1}^0 -dx + \int_0^1 0 dx + \int_1^{\frac{\pi}{2}} dx + \int_{-\frac{\pi}{2}}^0 -dx + \int_0^{\frac{\pi}{2}} 0 dx$$

$$= -2x \Big|_{-\frac{\pi}{2}}^{-1} - x \Big|_{-1}^0 + x \Big|_1^{\frac{\pi}{2}} - x \Big|_{-\frac{\pi}{2}}^0$$

$$= -2 \left( -1 + \frac{\pi}{2} \right) - (0 + 1) + \left( \frac{\pi}{2} - 1 \right) - \left( 0 + \frac{\pi}{2} \right)$$

$$= 2 - \pi - 1 + \frac{\pi}{2} - 1 - \frac{\pi}{2}$$

$$= -\pi$$

Thank You  
for downloading the PDF

FREE LIVE ONLINE

# MASTER CLASSES

FREE Webinars by Expert Teachers



Vedantu

## FREE MASTER CLASS SERIES

- ✔ For **Grades 6-12th** targeting **JEE, CBSE, ICSE** & much more
- ✔ **Free 60 Minutes Live Interactive** classes everyday
- ✔ Learn from the **Master Teachers** - India's best

Register for **FREE**

Limited Seats!