

ThinkBIG



PROGRAMMES AFTER 10+2 (FEE & SCHOLARSHIP DETAILS)

DISCIPLINES

Engineering | Computer Applications | Management | Economics | Law | Hotel Management & Tourism | Biotechnology | Microbiology | Forensic Sciences | Agriculture | Food Technology | Nutrition and Dietetics | Botany | Zoology | Chemistry | Physics | Mathematics | Commerce | Architecture | Planning | Fashion Design | Product & Industrial Design | Interaction Design | Multimedia & Animation | Interior & Furniture Design | Journalism & Film Production | Fine Arts | Performing Arts | Political Science | Geography | Psychology | Public Administration | Sociology | Arts (Humanities) | English & Foreign Languages | Library Science | Indian Languages | Education | Physical Education | Pharmaceutical Sciences | Ayurvedic Pharmaceutical Sciences | Medical Laboratory Sciences | Physiotherapy

SCHOLARSHIP & FINANCIAL AID SCHEME

Lovely Professional University strongly believes that monetary constraints should not be an obstacle for a student to have access to quality education. So the university offers Scholarship (upto Rs. 6 Lac per student) in more than 150 programmes of the University, ranging from Diploma Programmes to Ph.D. The scheme is as under:

1. Scholarship Categories: Scholarships are awarded to candidates based on their performance on any of the following categories:

- **Eligibility Qualification** (for example 10+2 for Under Graduate Programmes)
- LPU's Entrance and Scholarship Test : **LPUNEST**
- Certain **National Level Entrance Tests** [JEE (Mains), NCHM, NEET, UCEED, CLAT, NATA, NID, NIFT]

2. Scholarship Brackets: For each category mentioned, three brackets of Scholarship (Bracket 1, 2 and 3) are defined. Each bracket has its own respective criteria which needs to be met for availing the applicable scholarship. Therefore, the students meeting the requirement of Bracket- 1 gets the highest Scholarship and those in Bracket - 2 or 3 gets relatively lesser scholarship.

3. Scholarship Phases: Admissions in LPU are done in different Phases, which are bifurcation of the Admission time period. The amount of Scholarship also depends on the Phase in which the candidate takes admission in the University. **Phase - I** starts as early as **December 2022** and continues till the end of **April 2023**. The subsequent phases are conducted only if the seats in the concerned Programme remain vacant. The amount of Scholarship reduces with each passing phase and no Scholarship is offered in subsequent phases (if conducted). The dates for Phases (if offered) will be updated on the university website (www.lpu.in).

4. Amount of Scholarship in different Brackets for Phase-I

The Scholarship amount/ percentage varies as per the following :

Table 1 - For B.Tech. (CSE - AI and Data Engineering) programme.

Table 2 - B.Tech - (CSE)/ B Tech (CSE) [2+2 with international credit transfer option]/ B.Tech. CSE- Data Science with ML/ B.Tech. (CSE - DevOps (Software Development and IT Operations)/ B.Tech. (CSE- Cloud Computing)/ B.Tech (CSE - Big Data Analytics)/ B.Tech. (CSE - Decision Science & Machine Learning/ B.Tech (Hons.) (CSE- Data Science & Data Engineering)/ B.Tech (Hons.) (CSE- Cyber Security and Block Chain)/ B.Tech (Hons.) (CSE- Full Stack Software Development)/ B.Tech. (CSE - Software Product Engineering)/ B.Pharm.. programmes.

Table 3 - BCA/ BCA (Big Data Analytics)/ BCA (Augmented Reality and Virtual Reality)/ BCA (Hons.)/ B.Sc. (Hons.) Comp. Sc./ B.Sc. (IT)/ B Sc (IT) [2+2 with international credit transfer option]/ B.Sc. (Hons.) Agriculture/ BBA/ BBA [2+2 with international credit transfer option]/ Integrated BBA-MBA/ BBA (Hons.)/ BBA (Financial Markets)/ BBA (IT)/ BBA (International Finance)/ BBA (Blockchain)/ BBA (Business Analytics)/ B.Sc. (Design - Interior & Furniture)/ B.Design (Interior & Furniture)/ B.Design (Product & Industrial)/ B.Design (User Experience)/ B.Sc (Design - Fashion)/ B.Design (Fashion)/ B.Design (Fashion) [2+2 with international credit transfer option]/ B.Sc. (Design - Multimedia)/ B.Design (Multimedia)/ B.Sc. (Design -Graphics)/ B.Design (Graphics)/ B.Sc. (Design -Gaming)/ B.Design (Gaming)/ B.Sc. (Film & TV Production)/ B.Design (Film & TV Production)/ B.A., LL.B.(Hons.)/ BBA, LL.B. (Hons.) programmes.

Table 4 - B.Tech - all branches / B.Tech. [2+2 with international credit transfer option] (except CSE)/ B.Tech. (Robotics & Automation)/ B.Tech. (ECE-IOT)/ B.Tech. (AE - Electric Vehicle Design)/ B.Sc. (Forensic Science)/ B.Sc. (Hons.) Food Technology/ B.Sc. (Nutrition & Dietetics)/ B.Sc. (Hons.) Biotechnology/ B.Sc. (Hons.) Microbiology/ B.Com./ B.Com [2+2 with international credit transfer option]/ B.Com. (Hons.)/ B.Com. (Management Accounting and International Finance)/ B.Com (Financial Process Automation)/ B.Sc. (Hons.) Economics/ Bachelor of Hotel Mgt. & Catering Technology (BHMCT)/ Bachelor of Hotel Mgt & Catering Technology (BHMCT)/ [2+2 with international credit transfer option]/ B.Sc. (Hotel Management)/ B.A. (Culinary Arts)/ B.A. (Culinary Arts) [2+2 with international credit transfer option]/ B.Sc. (Airlines, Tourism & Hospitality)/ BBA (Tourism & Hospitality)/ BBA (Airlines and Airport Management)/ B.Arch./ B. Plan./ B.A. (Fine Arts)/ Bachelor of Fine Arts (BFA)/ B.A. (Journalism & Mass Communication)/ Bachelor of Arts (B.A.)/ B.A. (Hons.)/ B.Sc. (Health and Physical Education)/ Bachelor of Physical Education & Sports (BPES)/ B.Pharm. (Ayurveda)/ Bachelor of Physiotherapy (BPT)/ B.Sc. (Medical Laboratory Technology) programmes.

Table 5 - B.Sc. (Hons.) Botany/ B.Sc. (Hons.) Zoology/ B.Sc. (Hons.) Physics/ B.Sc. (Hons.) Chemistry/ B.Sc. (Hons.) Mathematics/ B.Sc. (Hons.) Statistics/ B.A. (Music Vocal/ Theatre)/ BPA (Music Vocal/ Theatre)/ Diploma in Library & Information Sciences/ Integrated B.A.- B.Ed./ Integrated B.Sc.- B.Ed. programmes.

Table 1

	Bracket-1	Bracket-2	Bracket-3
Phase - I	20%	15%	10%

Table 2

	Bracket-1	Bracket-2	Bracket-3
Phase - I	30%	25%	20%

Table 3

	Bracket-1	Bracket-2	Bracket-3
Phase - I	40%	30%	20%

Table 4

	Bracket-1	Bracket-2	Bracket-3
Phase - I	50%	40%	30%

Table 5

	Bracket-1	Bracket-2	Bracket-3
Phase - I	60%	50%	40%

To know the fee after scholarship for different programmes, refer the 'Fee Table' mentioned at the last page.

The scholarship mentioned above is for Phase-I only. Subsequent phases of admission will be conducted if seats remain vacant. The scholarship details for these subsequent phases can be referred from the university website: www.lpu.in

5. Details of Scholarship Brackets

Scholarship brackets for various categories as mentioned in point no. (1 and 2) is detailed below:

(i) On the basis of Percentage in Qualifying Exam:

- **Bracket 1** - Students scoring equal to or more than 95% marks in eligibility qualification falls in Bracket - 1 and are thus eligible for Scholarship of 20%, 30%, 40%, 50%, 60% of Programme fee in Phase-I (for applicable scholarship of each programme, refer programmes mentioned in Table-1, 2, 3, 4 and 5).
- **Bracket 2** - Students scoring between 90% to 94.99% marks in eligibility qualification falls in Bracket-2 and are thus eligible for Scholarship of 15%, 25%, 30%, 40%, 50% of Programme fee in Phase-I (for applicable scholarship of each programme, refer programmes mentioned in Table -1, 2, 3, 4 and 5).
- **Bracket 3** - Students scoring between 80% to 89.99% marks in eligibility qualification falls in Bracket-3 and are thus eligible for Scholarship of 10%, 20%, 20%, 30%, 40% of Programme fee in Phase-I (for applicable scholarship of each programme, refer programmes mentioned in Table-1, 2, 3, 4 and 5).
- **For Lateral Entry Programmes** - Scholarship will be offered on the basis of eligibility qualification. For example, someone seeking admission in B.Tech. [Lateral Entry] can seek scholarship on the basis of Diploma (eligibility qualification).

(ii) On the basis of LPUNEST:

For each Scholarship bracket, cut-offs are determined by the University and accordingly the Scholarship amount/ percentage varies as mentioned in **Table 1, 2, 3, 4 and 5**. To know the tentative cut-off for various programmes and approximate number of students falling in different

categories, refer university website www.lpu.in

(iii) On the basis of National Level Entrance Tests:

- Performance in the following National Level Entrance Tests is considered for offering Scholarship in LPU:
 - JEE (Mains), NCHM, NEET, UCEED, CLAT, NATA, NID, NIFT.
 - For every test mentioned above, LPU has determined the cut-offs for various Scholarship brackets. To know the cut-offs for other National Level Entrance Tests, refer university website www.lpu.in

6. Other Scholarships/ Financial Aid offered by the University

Apart from the scholarship on the basis of LPUNEST-2023 or Qualifying Examination explained above, LPU also offers scholarships and financial aid in the following areas:

- Scholarship on the basis of Performance in Innovation, Startup, Entrepreneurship and Hackathons.



- Scholarship on the basis of Performance in Sports.
- Scholarship on the basis of Performance in Cultural, R&D and Co-Curricular Activities.
- Scholarship on the basis of Performance in Social Service and Bravery Awards.
- Special Scholarship for Topper of Education Board.
- Financial Aid - Need Based.
- Financial Aid for Serving/ Retired Defence/ CAPF/ Para-Military Personnel and their dependents.
- Financial Aid to Orphan Applicants.
- Financial Aid to Persons with Certain Disability.
- For details regarding scholarship, refer university website i.e. www.lpu.in

UNDERGRADUATE ENGINEERING PROGRAMMES

- B.Tech.
- B.Tech. (Hons.)#
- B.Tech. CSE - DevOps (Software Development and IT Operations) [in tie-up with Xebia]
- B.Tech. (CSE - Cloud Computing) [in tie-up with Google Cloud]
- B.Tech. (CSE - Data Science with ML) [in tie-up with Upgrad]
- B.Tech. (CSE - AI and Data Engineering) [in tie-up with Futureense Technologies]
- B.Tech. (CSE - Software Product Engineering) [in tie-up with Kalvi]
- B.Tech. (CSE - Data Analytics) [in tie-up with IBM]
- B.Tech. (CSE - DevOps (Software Development and IT Operations) (in tie-up with Xebia)
- B.Tech. (CSE - Cloud Computing) (in tie-up with Google Cloud)
- B.Tech. (ECE - IoT) [in tie-up with Intel]
- B.Tech. (ECE - VLSI Design and Technology) in tie up with Cadence
- B.Tech. (ME - Digital Manufacturing) [in tie-up with Siemen]
- B.Tech. (CE - Building Information Modeling) [in tie-up with Technostruct Private Limited]
- B.Tech. (AE - Electric Vehicle Design) [in tie-up with Siemen]
- B.Tech. [2+2 with International Credit Transfer Option]*

and many more....

Streams/ Majors Offered in Engineering

LPU is offering not only conventional engineering streams/ majors but also one of its kind trend setting streams/ majors transforming engineering education to leap into the next leg of technology upbeat.

Examine the streams/majors given below to determine which engineering concentrations appeal to you:

1. Electronics and Communication Engineering (ECE)*
2. Computer Science and Engineering (CSE)*#
3. Information Technology (IT)
4. Mechanical Engineering (ME)*
5. ME - Mechatronics*
6. Aerospace Engineering
7. Automobile Engineering (AE)*
8. Robotics & Automation
9. Civil Engineering (CE)*
10. Electrical Engineering (EE)
11. Electrical and Electronics Engineering (EEE)
12. Biotechnology (BT)*
13. Food Technology
14. Biomedical Engineering
15. Chemical Engineering (CHE)

WHY GRADUATION FROM LPU?



High Average Salaries at top brands

Big brands, high average salaries and lucrative careers in Placement with 2000+ unique companies like Google, Microsoft etc.

Industry led Curriculum

Curriculum at LPU is developed in complete consultation with industry and is taught by highly rated faculty/ Industry professionals.



Ranked amongst top Universities of the World

LPU is ranked 74th Globally by Times Higher Education Impact Rankings 2022 and 23rd among top universities of India (both government and private) by Times Higher Education World University Rankings 2023.

Design your degree

Find your niche, follow your passion and craft your career in the academic field of your interest with unique combinations of 100+ majors and minors, interdisciplinary curriculum, career pathways.



Host to multiple heads of nations

LPU has been the host to heads of seven nations, governors of many States, ambassadors of different nations and, various central and state cabinet ministers

Students from all states and 40+ countries of the world

LPU has 30000+ students from all the states of India and from 40+ different countries across the world.



A vibrant campus

LPU has 100+ active student led clubs/ organisations and conducts more than 500 competitions/ events from sports to co-curricular every year.

State of the art Labs, Stadiums, Auditoriums & Residential complex

A vibrant campus with 90 lakh sq.ft. covered area, top lab infrastructure, largest residential capacity, mall, ultra-modern sports facilities, innovation studio, safe and secure campus, student activity centre and a lot more to make it world class.

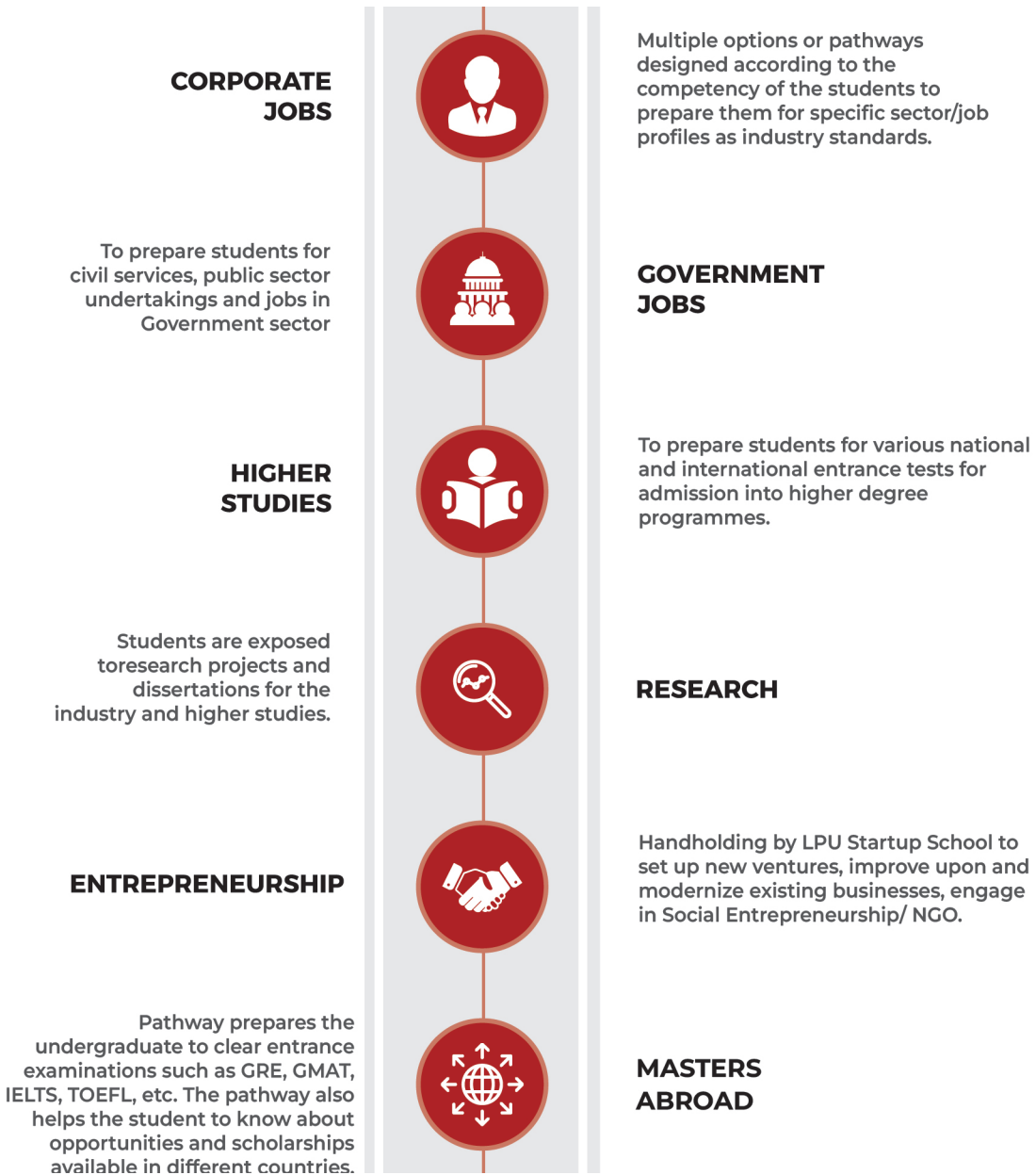


Business Incubation

With 70+ start-ups incubated, 100+ events focussing on entrepreneurship, students at LPU are encouraged and inspired to pursue their entrepreneurial passion.

CAREER PATHWAYS

As each individual is unique and approaches life in a different manner, so we allow each of them to choose his/her career pathways based on individual interest to prepare for life :



INDUSTRIAL TIE-UPS

For Hands-on practical training and certifications in collaborations with world's top brands.



FEE TABLE [Programmes After 12th (10+2)]

The following table lists the fee after different Scholarship percentages (60%, 50%, 40%, 30%, 20% etc.) and these percentages vary with Phases of Admissions. To know the details of Phases and Scholarship bracket applicable, refer Scholarship Scheme as detailed on initial pages of this brochure.

The fee & scholarship mentioned below is for Phase-I only. Subsequent phases of admission will be conducted if seats remain vacant. The fee & scholarship details for these subsequent phases can be referred from the university website www.lpu.in

After 10+2 Programmes	Programme Fee# (per sem.)	Applicable fees after Scholarship (per sem. in ₹) as mentioned below		
		After 20% scholarship	After 15% scholarship	After 10% scholarship
ENGINEERING - CSE				
B.Tech. (CSE - AI and Data Engineering)	190000	152000	161500	171000
After 10+2 Programmes	Programme Fee# (per sem.)	Applicable fees after Scholarship (per sem. in ₹) as mentioned below		
		After 30% scholarship	After 25% scholarship	After 20% scholarship
ENGINEERING/ PHARMACEUTICAL SCIENCES				
B.Tech - (CSE)	120000	84000	90000	96000
B.Tech. (CSE) [2+2 with international credit transfer option]	120000	84000	90000	96000
B.Tech. (CSE- Data Science with ML)	150000	105000	112500	120000
B.Tech. CSE - DevOps (Software Development and IT Operations)	150000	105000	112500	120000
B.Tech. (CSE- Cloud Computing)	150000	105000	112500	120000
B.Tech. (CSE - Big Data Analytics)	150000	105000	112500	120000
B.Tech. (CSE - Decision Science & Machine Learning)	150000	105000	112500	120000
B.Tech. (Hons.) (CSE - Data Science & Data Engineering, Cyber Security & Block Chain, Full Stack Software Development)	190000	133000	142500	152000
B.Tech. (CSE - Software Product Engineering)	190000	133000	142500	152000
B.Pharm.	120000	84000	90000	96000
After 10+2 Programmes	Programme Fee# (per sem.)	Applicable fees after Scholarship (per sem. in ₹) as mentioned below		
		After 40% scholarship	After 30% scholarship	After 20% scholarship
COMPUTER APPLICATIONS/ AGRICULTURE				
BCA	80000	48000	56000	64000
BCA (Big Data Analytics)	100000	60000	70000	80000
BCA (Hons.)	120000	72000	84000	96000
BCA (Augmented Reality and Virtual Reality)	100000	60000	70000	80000
B.Sc. (Hons.) Comp. Sc.	120000	72000	84000	96000

After 10+2 Programmes	Programme Fee# (per sem.)	Applicable fees after Scholarship (per sem. in ₹) as mentioned below		
		After 40% scholarship	After 30% scholarship	After 20% scholarship
COMPUTER APPLICATIONS/ AGRICULTURE				
B.Sc. (IT)	80000	48000	56000	64000
B.Sc. (IT) [2+2 with International Credit Transfer Option)	80000	48000	56000	64000
B.Sc. (Hons.) Agriculture	120000	72000	84000	96000
MANAGEMENT				
BBA	80000	48000	56000	64000
BBA [2+2 with international credit transfer option]	80000	48000	56000	64000
Integrated BBA-MBA	120000	72000	84000	96000
BBA (Hons.)	120000	72000	84000	96000
BBA (Financial Markets)	100000	60000	70000	80000
BBA (IT)	80000	48000	56000	64000
BBA (International Finance)	100000	60000	70000	80000
BBA (Blockchain)	100000	60000	70000	80000
BBA (Business Analytics)	100000	60000	70000	80000
INTERIOR & FURNITURE DESIGN/ PRODUCT & INDUSTRIAL DESIGN / INTERACTION DESIGN				
B.Sc. (Design - Interior & Furniture)	120000	72000	84000	96000
B.Design (Interior & Furniture)	120000	72000	84000	96000
B.Design (Product & Industrial)	120000	72000	84000	96000
B.Design (User Experience)	120000	72000	84000	96000
FASHION DESIGN/ MULTIMEDIA & ANIMATION/ JOURNALISM & FILM PRODUCTION				
B.Sc. (Design - Fashion)	120000	72000	84000	96000
B.Design (Fashion)	120000	72000	84000	96000
B.Design (Fashion) [2+2 with international credit transfer option]	120000	72000	84000	96000
B.Sc. (Design - Multimedia)	120000	72000	84000	96000
B.Design (Multimedia)	120000	72000	84000	96000
B.Sc. (Design -Graphics)	120000	72000	84000	96000
B.Design (Graphics)	120000	72000	84000	96000
B.Sc. (Design -Gaming)	120000	72000	84000	96000
B.Design (Gaming)	120000	72000	84000	96000
B.Sc. (Film & TV Production)	120000	72000	84000	96000
B.Design (Film & TV Production)	120000	72000	84000	96000
LAW				
B.A. LL.B.(Hons.)	120000	72000	84000	96000
BBA LL.B. (Hons.)	120000	72000	84000	96000

After 10+2 Programmes	Programme Fee# (per sem.)	Applicable fees after Scholarship (per sem. in ₹) as mentioned below		
		After 50% scholarship	After40% scholarship	After 30% scholarship
ENGINEERING (other streams)				
B.Tech.	120000	60000	72000	84000
B.Tech. [2+2 with international credit transfer option]	120000	60000	72000	84000
B.Tech. (Robotics & Automation)	150000	75000	90000	105000
B.Tech. (ECE-IOT)	150000	75000	90000	105000
B.Tech. (AE - Electric Vehicle Design)	150000	75000	90000	105000
FORENSIC SCIENCE				
B.Sc. (Forensic Science)	80000	40000	48000	56000
FOOD TECHNOLOGY				
B.Sc. (Hons.) Food Technology	80000	40000	48000	56000
NUTRITION & DIETETICS				
B.Sc. (Nutrition & Dietetics)	80000	40000	48000	56000
BIOTECHNOLOGY/ MICROBIOLOGY				
B.Sc. (Hons.) Biotechnology	80000	40000	48000	56000
B.Sc. (Hons.) Microbiology	80000	40000	48000	56000
COMMERCE/ ECONOMICS				
B.Com.	80000	40000	48000	56000
B.Com. [2+2 with international credit transfer option]	80000	40000	48000	56000
B.Com. (Hons.)	120000	60000	72000	84000
B.Com. (Management Accounting and International Finance)	100000	50000	60000	70000
B.Com. (Financial Process Automation)	100000	50000	60000	70000
B.Sc. (Hons.) Economics	80000	40000	48000	56000
HOTEL MANAGEMENT & TOURISM				
Bachelor of Hotel Mgt. & Catering Technology (BHMCT)	80000	40000	48000	56000
Bachelor of Hotel Mgt. & Catering Technology (BHMCT) [2+2 with international credit transfer option]	80000	40000	48000	56000
B.Sc. (Hotel Management)	80000	40000	48000	56000
B.A. (Culinary Arts)	80000	40000	48000	56000
B.A. (Culinary Arts) [2+2 with international credit transfer option]	80000	40000	48000	56000
B.Sc. (Airlines, Tourism & Hospitality)	80000	40000	48000	56000
BBA (Tourism & Hospitality)	80000	40000	48000	56000
BBA (Airlines and Airport Management)	80000	40000	48000	56000
ARCHITECTURE				
B.Arch.	120000	60000	72000	84000
PLANNING				
B.Plan.	120000	60000	72000	84000

After 10+2 Programmes	Programme Fee# (per sem.)	Applicable fees after Scholarship (per sem. in ₹) as mentioned below		
		After 50% scholarship	After40% scholarship	After 30% scholarship
FINE ARTS				
B.A. (Fine Arts)	50000	25000	30000	35000
Bachelor of Fine Arts (BFA)	50000	25000	30000	35000
JOURNALISM & FILM PRODUCTION				
B.A. (Journalism & Mass Communication)	120000	60000	72000	84000
ARTS (HUMANITIES)				
Bachelor of Arts (B.A.)	50000	25000	30000	35000
B.A. (Hons.)	50000	25000	30000	35000
PHYSICAL EDUCATION				
B.Sc. (Health and Physical Education)	50000	25000	30000	35000
Bachelor of Physical Education & Sports (BPES)	50000	25000	30000	35000
PHYSIOTHERAPY				
Bachelor of Physiotherapy (BPT)	80000	40000	48000	56000
MEDICAL LABORATORY SCIENCES				
B.Sc. (Medical Lab. Technology)	80000	40000	48000	56000
AYURVEDIC PHARMACEUTICAL SCIENCES				
B.Pharm. (Ayurveda)	80000	40000	48000	56000
After 10+2 Programmes	Programme Fee# (per sem.)	Applicable fees after Scholarship (per sem. in ₹) as mentioned below		
		After 60% scholarship	After 50% scholarship	After 40% scholarship
BOTANY/ ZOOLOGY				
B.Sc. (Hons.) (Zoology)	80000	32000	40000	48000
B.Sc. (Hons.) (Botany)	80000	32000	40000	48000
CHEMISTRY/ PHYSICS/ MATHEMATICS				
B.Sc. (Hons.) (Chemistry)	80000	32000	40000	48000
B.Sc. (Hons.)(Physics)	80000	32000	40000	48000
B.Sc. (Hons.) (Mathematics)	80000	32000	40000	48000
B.Sc. (Hons.) Statistics	100000	40000	50000	60000
PERFORMING ARTS				
B.A. (Music Vocal)	50000	20000	25000	30000
BPA (Music Vocal)	50000	20000	25000	30000
B.A. (Theatre)	50000	20000	25000	30000
BPA (Theatre)	50000	20000	25000	30000
LIBRARY SCIENCE				
Diploma in Library & Information Sciences	50000	20000	25000	30000
EDUCATION				
Integrated B.A. - B.Ed.	50000	20000	25000	30000
Integrated B.Sc. - B.Ed.	50000	20000	25000	30000

#Examination Fee - Rs. 4000 per semester



L OVELY
P ROFESSIONAL
U NIVERSITY

Transforming Education Transforming India

Think**BIG**

LPU RANKINGS



Times Higher Education Impact
Rankings 2022

Ranks LPU
74th
Globally

Proudly Indian, Truly Global!



Ministry of Education, Government
of India Rankings 2021

Ranks LPU
62nd
Amongst all
Government and Private
Universities in India



**World
University
Rankings 2023**

Times Higher Education Ranking
is the World's Most Prestigious
University Ranking System

Ranks LPU
23rd
Amongst Top
Universities of India
1000-1200 Band - World Wide



ARIIA
ATAL RANKING OF INSTITUTIONS
ON INNOVATION ACHIEVEMENTS

Atal Ranking of Institutions on
Innovation Achievements (ARIIA)

Ranks LPU
3rd
Amongst Top
Private Universities
of India

The information provided in this Brochure is a general proposal and not a commitment / confirmation of any type. If the information available on the University website under the head Admissions i.e. <https://www.lpu.in/admission/> or Prospectus 2023 differs from the information provided in this Brochure, then the information available on the University website (under the head Admissions) or Prospectus 2023 or subsequent Corrigendum will prevail.





L OVELY
P ROFESSIONAL
U NIVERSITY

Transforming Education Transforming India

LOVELY PROFESSIONAL UNIVERSITY (LPU)
Jalandhar-Delhi G.T. Road, Phagwara, Punjab (India) 144411
For General Enquiry: 01824-517000
Visit: www.lpu.in | Email: admissions@lpu.co.in

