

**GENERAL SCIENCE, Paper-II**  
(English Version)

20E

Time : 2 Hours 45 Mins.]

[Maximum Marks : 50

**Instructions :**

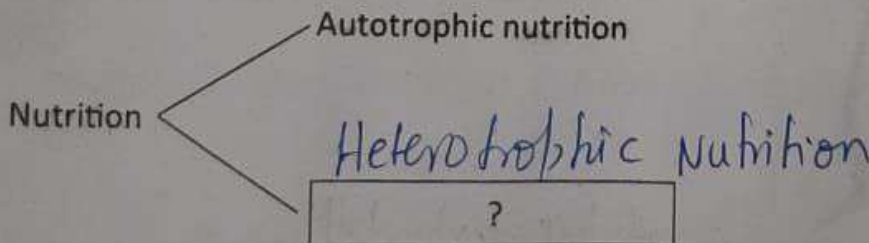
1. First 15 minutes are meant for reading the question paper and remaining 2 hours 30 minutes are for writing the exam.
2. Answer all questions in the given booklet.
3. The question paper contains four sections.
4. Only section four has internal choice.

**Section - I**

12 × ½ = 6

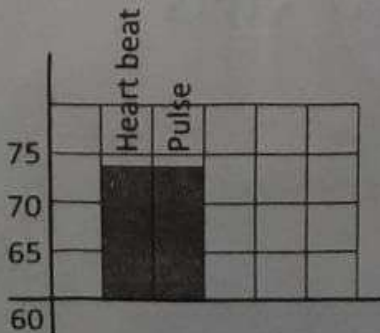
- Note :** (1) Answer **all** the questions.  
(2) Each question carries ½ mark.

1. Write the missing part from the flowchart.



2. Pulmonary : Lungs :: Cardiac : Heart.

3. Observe the sample graph.



What is the relationship between heart beat and the pulse ? same

4. Which is the largest part of the brain?

Cerebrum

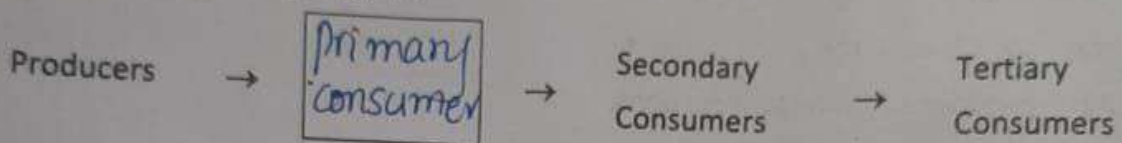
5. Who is called as the Father of genetics?

Gregor John Mendel

6. John prepared an apparatus used to observe heart beat by using papercup and plastic tube. To which device does this model belong?

Stethoscope

7. Complete the given food chain.



8. Identify the logo.

Sustainable Development



9. I am a Vitamin responsible for blood coagulation.

Guess who am I? vitamin k.

10. Expand HIV. Human Immuno deficiency virus

11. Name the Phytohormone responsible for cell elongation and differentiation of shoots and roots.

(A)  Auxin (B) Gibberellin (C) Cytokinin (D) Ethylene

[1/1]

12. Identify the mismatched pair -

3

(1)

- (i) Producers - Frog, Cat
- (ii) Herbivores - Cow, Rabbit
- (iii) Predators - Lion, Tiger

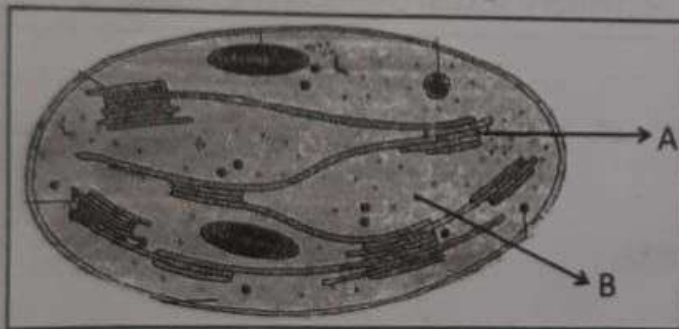
8 x 1 =

Section - II

Note : (1) Answer **all** the questions.

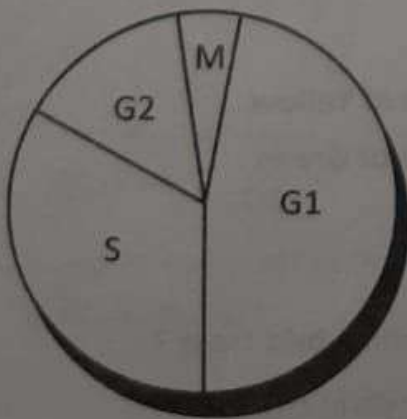
(2) Each question carries **1** mark.

13. Label the parts given in the diagram.



14. Prepare a questionnaire to ask an Environmentalist about the consumption of fossil fuels.

15. What does this chart denote ? In which phase the size of the cell increases ?



16. Which materials are required to study the Kidney of Goat/Sheep in the Laboratory ?