

SSC PUBLIC EXAMINATIONS JULY – 2020  
GENERAL SCIENCE-PAPER-I&II  
MODEL PAPER  
(English Medium)

Time :3.15Hrs

MaxMarks:100

Instructions

- 1.This paper consists of Part-A & Part-B
- 2.Part-A contains questions from Physical Science and Part-B contains from Biological science.
- 3.Part-A & Part-B contains 4 sections each.
- 4.There are 33 questions in the paper.
- 5.There is internal choice in section –IV of Part-A & Part-B.
- 6 Write all the questions visibly & legibly.
- 7.15 minutes are given for reading the question paper .

**PART-A**  
**SECTION-I**

- Note:** 1. Answer all the Questions.  
2. Each question carries 1 mark

6x1=6

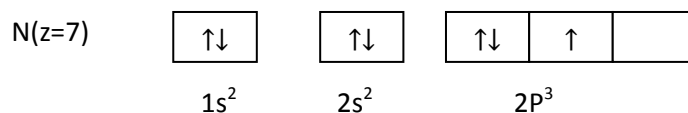
- 1) Convert 30<sup>0</sup>c into Kelvin cycle.
- 2) Bleaching powder is represented by formula
- 3) Statement -1 splitting of light into colours is called dispersion  
Statement -2 rainbow is an example for continue spectrum  
write the correct answer for the following in your answer booklet.  
a)both statements are correct                      b)statement -1 is correct  
c)statement-2 is correct                              d)both statements are wrong
- 4)define roasting
- 5)what is the resistance of an electric arc lamp uses 20AMP when connected to a 220v line
- 6)which converts mechanical energy to electrical energy?  
a)motar                      b)battery                      c)generator                      d)switch

**SECTION-II**

- Note:** 1. Answer all the Questions.  
2. Each question carries 2 marks

4x2=8

- 7)Draw the diagram of Biconvex and concave convex
- 8)write any two questions to understand Myopia and Hypermetropia
- 9)Following orbital diagram shows the electrons configuration of nitrogen atom which rule does not support this?



- 10)write the names of any two ores of iron

SSC PUBLIC EXAMINATIONS JULY – 2020  
GENERAL SCIENCE-PAPER-I&II  
MODEL PAPER  
(English Medium)

Time :3.15Hrs

MaxMarks:100

**SECTION-III**

**4x4=16**

**Note:** 1. Answer all the Questions.  
2. Each question carries 4 marks

11)complete thefollowing table with suitable answers

Sample solution	Blue litmas paper	Red litmas paper	Methyl orange solution	Phenopthalin solution
H <sub>2</sub> SO <sub>4</sub>	Red		Red	
Ca(OH) <sub>2</sub>		Blue		Pink
CH <sub>3</sub> COOH		No change		No change
NH <sub>4</sub> OH	No change		Yellow	

12) Why is it difficult to shoot a fish swimming in water?

13) Explain with the help of one activity that current carrying wire produces magnetic field.

14)How do you appreciate the role of esters in our daily life?

**SECTION-IV**

**Note:** 1. Answer all the Questions.  
2. Each question carries 8 marks

**2x8=16**

15a)Define the modern periodic table law.Discuss the construction of long form of the periodic table.

(Or)

15b)What is hybridisation ?Explain the formation of the following molecules using hybridisation

a)BaCl<sub>2</sub>            b)BF<sub>3</sub>

16a)What is the principle of method of mixtures verify it with an activity.

(Or)

16b)State ohm's law .suggest an experiment it and explain the procedure.

SSC PUBLIC EXAMINATIONS JULY – 2020  
GENERAL SCIENCE-PAPER-I&II  
MODEL PAPER  
(English Medium)

Time :3.15Hrs

MaxMarks:100

**PART-B**  
**SECTION-I**

**Note: 1. Answer all the Questions.**  
**2. Each question carries 1 mark**

**6x1=6**

- 17) Write the name of the fluid which protects the brain against shocks/jerks.  
18) Paramoecium reproduce by fission. Give another example as paramecium  
19) Choose the correct pigment in green plants?  
Haemoglobin, bilirubin, chlorophyll, and haemocyanin  
20) Write the name of the main product of photosynthesis.  
21) Radha said "ghrelin stops the hunger pangs". Is it correct? If not Write correct answer  
22) Bolus-Mouth, -----stomach" fill the blank.

**SECTION-II**

**Note: 1. Answer all the Questions.**  
**2. Each question carries 2 mark**

**4x2=8**

- 23) Name the respiration end products. Among them which one is useful for photosynthesis?  
24) Name gases involving in green house effect.  
25) Choose the de-oxygenated blood containing parts from the below list  
Right atrium, left ventricle, aorta, pulmonary vein and pulmonary artery  
26) Write the waste substances are removing by tubular secretion in nephron.

**SECTION-III**

**Note: 1. Answer all the Questions.**  
**2. Each question carries 4 marks**

**4x4=16**

- 27) Draw a labelled diagram of Mitochondria.  
28) Write the differences between excretion and secretion  
29) Name the laws of Mendel and give the meaning of dominant character?  
30) What is endosperm? And write its role in plants.

**SECTION-IV**

**Note: 1. Answer all the Questions.**  
**2. Each question carries 8 marks**

**3x8=24**

- 31a) write the differences between ecological pyramid and food chain

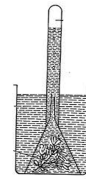
(Or)

- 31b) write the different steps in blood clotting .

SSC PUBLIC EXAMINATIONS JULY – 2020  
GENERAL SCIENCE-PAPER-I&II  
MODEL PAPER  
(English Medium)

Time :3.15Hrs

MaxMarks:100



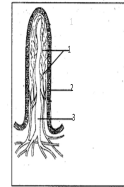
32a)write the answers for the following questions by observing the following experiment

- 1)what is the aim of this experiment?
- 2)write the non- living apparatus in this experiment.
- 3)which product we will expect in this experiment.
- 4) Which life process starts with released gas that in this experiment?

(Or)

32b)write the procedure of the starch is reacted with saliva in our mouth and write the material used in it

33a)Draw a neat labelled diagram of LS of kidney and write the important of nephron in it.



(Or)

33b)Labele the following diagram and write about its location and functions.