

1. **Direction:** In this question, two **columns I and II** and three sentences are given, which are divided into two parts. **Column I (A, B and C)** consists of first half of each sentence and **Column II (D, E and F)** consists of second half of each sentence. Match column I with column II, so that the sentences formed are both meaningful and grammatically correct. Choose the option as your answer.
- I. A) Most farmers depend on
 B) It is important to plan recruitments in advance
 C) As the city has experienced a continuous downpour
- II. D) for the past two days, the condition of the roads has deteriorated.
 E) a rather than waiting until a vacancy occurs.
 F) urban markets to secure their livelihoods
- A. B-E and C-F
 B. A-E, B-F and C-D
 C. A-F and C-D
 D. B-F
 E. A-E and C-F
2. **Direction:** In this question, two **columns I and II** and three sentences are given, which are divided into two parts. **Column I (A, B and C)** consists of first half of each sentence and **Column II (D, E and F)** consists of second half of each sentence. Match column I with column II, so that the sentences formed are both meaningful and grammatically correct. Choose the option as your answer.
- I. A) What you see typically in a workplace is that
 B) You may be well equipped to go for an excursion
 C) More often than not it is the PR that is responsible
- II. D) but that doesn't safeguard from all possible hurdles in your journey.
 E) only a fewer people shoulder most responsibilities.
 F) for the image and valued of a celebrity
- A. B-D
 B. A-E and C-F
 C. CE
 D. A-E, B-F and C-D
 E. C- D and A- F

3. **Direction:** In this question, two **columns I and II** and three sentences are given, which are divided into two parts. **Column I (A, B and C)** consists of first half of each sentence and **Column II (D, E and F)** consists of second half of each sentence. Match column I with column II, so that the sentences formed are both meaningful and grammatically correct. Choose the option as your answer.
- I. A) Determining and planning your staff needs
 B) The study documents the impacts of corruption
 C) Acquiring quality certificates and patents is
- II. D) is crucial for run the department effectively.
 E) a must for business in order for them to safeguard their products.
 F) for both smaller and larger sized firms.
- A. B-F and C-E B. A-D and C-D
 C. C-D and A-F D. C-E
 E. B- D
4. **Direction:** In this question, two **columns I and II** and three sentences are given, which are divided into two parts. **Column I (A, B and C)** consists of first half of each sentence and **Column II (D, E and F)** consists of second half of each sentence. Match column I with column II, so that the sentences formed are both meaningful and grammatically correct. Choose the option as your answer.
- I. A) A skilled supervisor is an effective communicator
 B) The fundamental right to asylum for
 C) They had long suspected the existence of a neutral atomic
- II. D) particles, the neutron, which James Chadwick found in 1932.
 E) problem- solving and employee motivating
 F) for the politically persecuted knows no upper limit.
- A. A-E and B-D B. A-F, A-E and B- D
 C. B-F D. C- D
 E. C-D and B-F
5. **Direction:** The given sentences, when properly sequenced, form a coherent paragraph. Each sentence is labelled with a letter. Choose the most logical order of the sentences from among the five given choices to construct a coherent paragraph keeping 1 as the first statement

1. Worthless currency is not necessarily useless.

A. It can be a pointed way of shaming someone who asks for a bribe.

B. The members of the 5th pillar, the group which founded the anti-bribery campaign that launched the notes, calls them a non-violent weapon of non-co-operation.

C. They look roughly like 50 rupee notes and people are encouraged to hand them to corrupt officials, signalling resistance to sleaze.

D. That is the thinking behind zero rupee notes, an anti-corruption Indian gimmick now attracting worldwide interest.

A. BDAC

B. ADCB

C. CDAB

D. DABC

E. ACDB

6. **Direction:** The given sentences, when properly sequenced, form a coherent paragraph. Each sentence is labelled with a letter. Choose the most logical order of the sentences from among the five given choices to construct a coherent paragraph keeping 1 as the first statement

1. Besides the loss of life, infrastructure destruction is by far the most obvious type of damage that comes to mind when we think about natural disasters.

A. Reuters reported that after a series of earthquakes hit Japan, factories for manufacturers like Sony, Honda, and Toyota were closed.

B. Thus, one of the biggest problems for areas affected by natural disasters is business disruption.

C. In today's increasingly interconnected economy, the economic fallout from a natural disaster is rarely relegated to the geographic area that it hits; in fact, even natural disasters that take place thousands of miles away can shake up your portfolio here at home.

D. With road, communication infrastructure, and building damage common after sizable disasters, it's not uncommon for local businesses to be shut down for some time after the aftershocks settle.

A. ABDC

B. BDAC

C. ACDB

D. DBAC

E. BACD

7. **Direction:** The given sentences, when properly sequenced, form a coherent paragraph. Each sentence is labelled with a letter. Choose the most logical order of the sentences from among the five given choices to construct a coherent paragraph keeping 1 as the first statement

1. One of the traditional arguments for a free market economy is that it provides businesses with a tangible incentive to offer goods and services that people want.

A. Such a system, they say, necessarily creates clear winners and loser

B. That is, firms that successfully respond to the needs of the consumer get rewarded with higher profits.

C. This is because the means of production are in private hands and those who own them not only accumulate a disproportionate share of wealth but have the power to suppress the rights of those they employ.

D. Nevertheless, some economists and political philosophers have contended that the capitalist model is inherently flawed.

A. BDAC

B. BCAD

C. DCAB

D. DBCA

E. BCDA

8. **Direction:** The given sentences, when properly sequenced, form a coherent paragraph. Each sentence is labelled with a letter. Choose the most logical order of the sentences from among the five given choices to construct a coherent paragraph keeping 1 as the first statement

1. Science merely reflects the social forces by which it is surrounded and hence it is war and not science which is considered as the enemy of mankind.

A. Our main problem, therefore, is not to curb science, but to stop war, to substitute law for force and international governments for anarchy in the relations between nations.

B. It is found that there is peace, science is constructive; when there is war science is perverted to destructive ends.

C. Until now, they have brought us to the doorstep of doom.

D. The weapon which science gives us do not necessarily create war, these make war increasingly more terrible.

A. ADBC

B. BADC

C. CDAB

D. DABC

E. BDCA

9. **Direction:** The given sentences, when properly sequenced, form a coherent paragraph. Each sentence is labelled with a letter. Choose the most logical order of the sentences from among the five given choices to construct a coherent paragraph keeping 1 as the first statement

1. In the long run, national recognition of same-gender marriage is inevitable.

A. It is only a matter of time before all state laws reflect that view.

B. Prudence counsels that marriage equality should be allowed to continue gaining support in the states and that a federal resolution should be left for another day.

C. Same-gender marriage rights, at first imposed by courts, have now been recognized by state legislatures and prevailed in all four states where they were on the ballot in last year's election.

D. Young people overwhelmingly support it, and public opinion has shifted on this issue faster than on almost any other social issue in history.

A. CDAB

B. ACBD

C. BACD

D. DCBA

E. CDBA

10. **Direction:** The given sentences, when properly sequenced, form a coherent paragraph. Each sentence is labelled with a letter. Choose the most logical order of the sentences from among the five given choices to construct a coherent paragraph keeping 1 as the first statement

1. The Ganges is a trans-boundary river of Asia which flows through the actions of India and Bangladesh.

A. It is the third largest river in the world by discharge, draining a large and a fertile basin with an area of about one million square kilometers.

B. The 2,525 km (1,569 mi) river rises in the eastern Himalayas in the Indian state of Uttarakhand and flows south and east through the Gangetic Plain of North India into Bangladesh, where it empties into the Bay of Bengal.

C. The Ganges is the most sacred river to Hindus Ganga along with being a symbol of divinity, spirituality, purity, and moksha.

D. It is also a lifeline to millions of Indians who live along its course and depend on it for their daily needs.

A. BCAD

B. BACD

C. ABCD

D. ABDC

E. CBAD

11. **Direction:** In the given question, there are two statements which can be combined into a single statement in a number of ways without changing their meaning. Below them, three probable starters A, B, C are given, which may combine these sentences. One, two or three of them may be correct. Decide upon which is/are correct, if any mark the option which denotes your answer. If none of the three options is suitable, mark 'None' as your answer.

Discuss the matter objectively with other people who are well-informed. If it is proved that you are about to take a step in the wrong direction, accept the reality and admit your mistake.

I. As soon as they take it into consideration

II. Before taking a decision

III. Yet another example is that

A. Only I

B. Only II

C. Both II and III

D. Both I and II

E. None

12. **Direction:** In the given question, there are two statements which can be combined into a single statement in a number of ways without changing their meaning. Below them, three probable starters A, B, C are given, which may combine these sentences. One, two or three of them may be correct. Decide upon which is/are correct, if any mark the option which denotes your answer. If none of the three options is suitable, mark 'None' as your answer.

A wealth of evidence has accumulated to suggest that a lack of sleep is bad for mind and body. Working memory is important for keeping things in mind for briefer periods of time, which thereby facilitates reasoning and planning.

I. Over the last few years

II. As soon as

III. In contrast

A. Only I

B. Only II

C. Only III

D. Both I and II

E. None

13. **Direction:** In the given question, there are two statements which can be combined into a single statement in a number of ways without changing their meaning. Below them, three probable starters A, B, C are given, which may combine these sentences. One, two or three of them may be correct. Decide upon which is/are correct, if any mark the option which denotes your answer. If none of the three options is suitable, mark 'None' as your answer.

1. The regulator also spoke of two on-going investigations in the matter of NSE and Rs5,548 -crore National Spot Exchange Ltd (NSEL) scam. This was a departure from the regular practice and norms of SEBI.

I. The two ongoing investigations

II. In a departure from

III. Speaking of

- A. Only I B. Only II
C. Only III D. Both I and III
E. None

14. **Direction:** In the given question, there are two statements which can be combined into a single statement in a number of ways without changing their meaning. Below them, three probable starters A, B, C are given, which may combine these sentences. One, two or three of them may be correct. Decide upon which is/are correct, if any mark the option which denotes your answer. If none of the three options is suitable, mark 'None' as your answer.

Even if the violations are technically against the rules. It can actually serve to strengthen the classroom culture and increase trust with some students.

I. Ignoring certain minor misbehaviours,

II. Going with undisruptive behaviour,

III. Considering which behaviour of children to address and which to ignore,

- A. Only I B. Both I and II
C. Both I and III D. Both II and III
E. None

15. **Direction:** In the given question, a part of the sentence is printed in bold. Below the sentence alternatives to the bold part are given at (A), (B), (C) and (D) which may help improve the sentence. Choose the correct alternative. In case the given sentence is correct, your answer is (E) i.e. No correction required.

While welcoming all moves **to addresses India's core** concerns on terror, New Delhi must ensure it doesn't get ensnared or triangulated in the equation between Washington and Islamabad.

- A. for address India's core
B. to address India's cores
C. to address India's core
D. to address Indian core
E. No correction required

16. **Direction:** In the given question, a part of the sentence is printed in bold. Below the sentence alternatives to the bold part are given at (A), (B), (C) and (D) which may help improve the sentence. Choose the correct alternative. In case the given sentence is correct, your answer is (E) i.e. No correction required.

Massive protests by the Indian Medical Association and poor execution derailed the Chhattisgarh experiment, but the **ideas wasn't without merit.**

- A. idea wasn't without merit
B. idea weren't without merit
C. idea hadn't without merit
D. idea haven't without merit
E. No correction required

17. **Direction:** In the given question, a part of the sentence is printed in bold. Below the sentence alternatives to the bold part are given at (A), (B), (C) and (D) which may help improve the sentence. Choose the correct alternative. In case the given sentence is correct, your answer is (E) i.e. No correction required.

The empire-builders benefited from impeccable timing: the characteristic warm, wet and stable weather was conducive to economic **productivity at an agrarian** society.

- A. productivity at an agrarian
B. productivity in an agrarian
C. productivity at the agrarian society
D. productive at an agrarian
E. No correction required

18. **Direction:** In the given question, a part of the sentence is printed in bold. Below the sentence alternatives to the bold part are given at (A), (B), (C) and (D) which may help improve the sentence. Choose the correct alternative. In case the given sentence is correct, your answer is (E) i.e. No correction required.

An Australian man, long thought **to being associated of the** digital currency Bitcoin, has publicly identified himself as its creator.

- A. to be associate with that
- B. to be associates from the
- C. to be associate within the
- D. to be associated with the
- E. No correction required

19. **Direction:** In the given question, a part of the sentence is printed in bold. Below the sentence alternatives to the bold part are given at (A), (B), (C) and (D) which may help improve the sentence. Choose the correct alternative. In case the given sentence is correct, your answer is (E) i.e. No correction required.

What drove its initial development was its purely digital existence, **away from the control of** government regulators.

- A. away to the control of
- B. away with control of the
- C. away from control of the
- D. away with the control for
- E. No correction required

20. **Direction:** In the given question, a part of the sentence is printed in bold. Below the sentence alternatives to the bold part are given at (A), (B), (C) and (D) which may help improve the sentence. Choose the correct alternative. In case the given sentence is correct, your answer is (E) i.e. No correction required.

Bitcoin **could let transacting party remain** anonymous, keep transactions very secure, and eliminate middlemen fees.

- A. would letting transactions parties remains
- B. should lets transacting party remain
- C. would let transacting parties remain
- D. would have transacting parties remain
- E. No correction required

21. **Direction:** In the given question, a part of the sentence is printed in bold. Below the sentence alternatives to the bold part are given at (A), (B), (C) and (D) which may help improve the sentence. Choose the correct alternative. In case the given sentence is correct, your answer is (E) i.e. No correction required.

The mid-day meal scheme has helped but **should it have been linked less** with the schooling system and more with the hunger pattern.

- A. should had been linked less
- B. should it not have been linked less
- C. it should been linked lesser
- D. it should have been linked less
- E. No correction required

22. **Direction:** In the given question, a part of the sentence is printed in bold. Below the sentence alternatives to the bold part are given at (A), (B), (C) and (D) which may help improve the sentence. Choose the correct alternative. In case the given sentence is correct, your answer is (E) i.e. No correction required.

A true leader's life is a saga **of dedicating to** the cause of welfare of human beings

- A. of dedicated
- B. of having dedication in
- C. of dedication to
- D. for dedication at
- E. No correction required

23. **Direction:** In the given question, a part of the sentence is printed in bold. Below the sentence alternatives to the bold part are given at (A), (B), (C) and (D) which may help improve the sentence. Choose the correct alternative. In case the given sentence is correct, your answer is (E) i.e. No correction required.

The building had been under construction for a long time until a series of unprecedented events **led it to a halt.**

- A. leads it to a halt
- B. bringing it to a stop
- C. brought it to a halt
- D. led it to a stop
- E. No correction required

24. **Direction:** In the given question, a part of the sentence is printed in bold. Below the sentence alternatives to the bold part are given at (A), (B), (C) and (D) which may help improve the sentence. Choose the correct alternative. In case the given sentence is correct, your answer is (E) i.e. No correction required.

At work, if you are unable to follow the rules, you will find yourself **running out of disagreement** with many people.

- A. running in disagreements
- B. running out of disagreements
- C. running into disagreements
- D. running within disagreement
- E. No correction required

Direction (41-42): Study the given question carefully and answer the given question.

C is the daughter of the one who is son of B. There is only one married couple in the group. F is the brother of E, who is the daughter of D and grand daughter of B. A is the mother of C, who is married couple in the group.

41. What is true with respect to F?
A. F is the son of B and A
B. F is the daughter of C and E
C. F is the son of D and A
D. F is daughter of B
E. None of these
42. How is B related to E?
A. B is uncle of E
B. B is grandfather of E
C. B is Grandmother of E
D. B is brother of E
E. Can't be determined

Direction (43-47): Study the following information to answer the given questions.

Fourteen people are sitting in two parallel rows containing seven people each, in such a way that there is an equal distance between adjacent persons.

In row 1, P, Q, R, S, T, U and V are seated and all of them are facing south. In row 2, A, B, C, D, E, F and G are seated and all of them are facing north. Therefore, in the given seating arrangement each member seated in a row faces another member of the other row. U sits opposite to G and are in middle of the rows. A sits fourth to right of D. Neither A nor D sits at extreme ends. T faces D. V does not face A and V does not sit at any of the extreme ends. V is not an immediate neighbour of T. B sits at one of the extreme ends. Only three people sit between B and E. E does not face V. Three persons sit between R and Q. R is not an immediate neighbour of T. C does not face V. P is not an immediate neighbour of R.

43. Who amongst the following sit at extreme left ends of the parallel rows?
A. R, B
B. F, T
C. P, C
D. B, F
E. None of these
44. Who amongst the following faces A?
A. R
B. T
C. P
D. Q
E. S

45. How many persons are seated between T and S?
A. One
B. Two
C. Three
D. Four
E. None of these
46. P is related to V in the same way as C is related to F. Which of the following is E related to, following the same pattern?
A. B
B. D
C. C
D. A
E. None of the above
47. Which of the following is true regarding F?
A. F sits second to right of C.
B. F is not an immediate neighbour of A
C. F sits third to left of D
D. F sits at one of the extreme ends of the line
E. F faces V

Direction (48-52): Study the given information carefully and answer the following question.

A, B, C, D, E, F and G are seven different boxes packed with different numbers written on top of them viz. 1, 2, 3, 4, 5, 6 and 7 but not necessarily in the same order. Box D is immediately above the box packed with number 5. More than three boxes are there between box packed with number 4 and box packed with number 2. There are two boxes between the box B and box E. There is only one box between box E and box G. There are three boxes between box G and box A, which is packed with number 1. There are only two boxes between box A and box C, which is packed with number 6. The box packed with number 2 is immediately above the box G. More than three boxes are there between box packed with number 5 and box packed with number 4. Box E is packed with number 3

48. Which of the following box is packed with a number which is a perfect square?
A. D
B. B
C. F
D. G
E. Cannot be determined
49. How many boxes are there between box A and box which is packed with number 5?
A. None
B. One
C. Two
D. Three
E. Four

I. Q is heavier than R and S. T is heavier only than P.

II. Only three are lighter than R. The weight of Q is 50kg which is 2kg more than R. S is heavier only than P and T.

A. If the data in statement I alone are sufficient to answer the question, while the data in statement II alone are not sufficient to answer the question.

B. If the data in statement II alone are sufficient to answer the question, while the data in statement I alone are not sufficient to answer the question.

C. If the data either in statement I alone or in statement II alone are sufficient to answer the question.

D. If the data even in both statements I and II together are not sufficient to answer the question.

E. If the data in both statement I and II together are necessary to answer the question.

62. **Direction:** The following question is followed by two statements named I and II. You have to decide, if these statements are sufficient to answer the asked questions and mark the correct option.

On which day of the week did Anu arrive?

I. Her sister Tanu correctly remembers that she did not arrive on Wednesday.

II. Her mother correctly mentions that she arrived before Friday but after Tuesday.

A. If the data in statement I alone are sufficient to answer the question, while the data in statement II alone are not sufficient to answer the question.

B. If the data in statement II alone are sufficient to answer the question, while the data in statement I alone are not sufficient to answer the question.

C. If the data either in statement I alone or in statement II alone are sufficient to answer the question.

D. If the data even in both statements I and II together are not sufficient to answer the question.

E. If the data in both statement I and II together are necessary to answer the question.

63. **Direction:** The following question is followed by two statements named I and II. You have to decide, if these statements are sufficient to answer the asked questions and mark the correct option.

How is Mohan related to Faizan?

I. Faizan is the brother of Neelam who is mother of Rohan.

II. Mohan has two brothers and Rohan is one of them.

A. If the data in statement I alone is sufficient to answer the question, while the data in statement II alone is not sufficient to answer the question

B. If the data in statement II alone is sufficient to answer the question, while the data in statement I alone is not sufficient to answer the question

C. If the data either in statement I alone or in statement II alone is sufficient to answer the question

D. If the data in both statements I and II even together is not sufficient to answer the question

E. If the data in both statements I and II together is necessary to answer the question

64. **Direction:** The following question is followed by two statements named I and II. You have to decide, if these statements are sufficient to answer the asked questions and mark the correct option.

Among Puneet, Karishma, Daya and Ritik, who is son of Manvendra?

I. Puneet and Karishma are sisters of Ritik.

II. Daya is the mother of Karishma and wife of Manvendra.

A. If the data in statement I alone is sufficient to answer the question, while the data in statement II alone is not sufficient to answer the question

B. If the data in statement II alone is sufficient to answer the question, while the data in statement I alone is not sufficient to answer the question

C. If the data either in statement I alone or in statement II alone is sufficient to answer the question

D. If the data in both statements I and II even together is not sufficient to answer the question

E. If the data in both statements I and II together is necessary to answer the question

65. **Direction:** The question below consists of a question and two statements numbered I and II given below it. You have to decide whether the data provided in the statements are sufficient to answer the question.

There are five persons named Suhana, Rashmi, Radha, Ranu and Zoya standing in a row facing South. Who is standing to the immediate left of Radha?

I. Suhana is not standing on any of the extreme end of the row. Zoya is standing to the second left of Rashmi.

II. Zoya is standing in the middle of the row. Suhana is standing at third to the left of Rashmi who is at the extreme right.

A. If the data in statement I alone is sufficient to answer the question, while the data in statement II alone is not sufficient to answer the question

B. If the data in statement II alone is sufficient to answer the question, while the data in statement I alone is not sufficient to answer the question

C. If the data either in statement I alone or in statement II alone is sufficient to answer the question

D. If the data in both statements I and II even together is not sufficient to answer the question

E. If the data in both statements I and II together is necessary to answer the question

66. **Directions:** Find out the wrong no. in the following series?

59, 60, 61, 64, 79, 185, 1129

- A. 185 B. 61
C. 60 D. 1129
E. 79

67. **Directions:** Find out the wrong no. in the following series?

330, 80, 280, 120, 250, 130, 240

- A. 330 B. 130
C. 240 D. 120
E. 250

68. **Directions:** Find out the wrong no. in the following series?

291, 147, 75, 39, 22, 12, 7.5

- A. 39 B. 147
C. 22 D. 7.5
E. 291

69. **Directions:** Find out the wrong no. in the following series?

1, 3, 9, 31, 129, 652

- A. 1 B. 3
C. 652 D. 31
E. 129

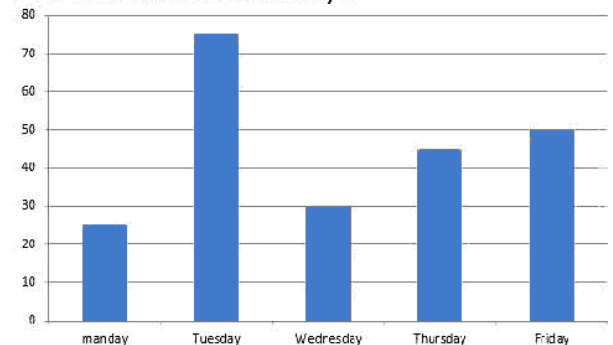
70. **Directions:** Find out the wrong no. in the following series?

26, 27, 34, 58, 106, 186, 306

- A. 27 B. 34
C. 186 D. 106
E. 306

Directions (71-75): Bar graph given below shows pens sold by a retailer on five different days. Study the data carefully and answer the following questions.

Pen sold on different days



71. Out of total pens sold on Tuesday ratio between total defective pens sold to total pens sold is 7: 15. Find total number of non-defective pens sold on Tuesday by retailer?

- A. 40 B. 15
C. 60 D. 45
E. 90

72. Total number of pens sold on Saturday is 40% more than total number of pens sold on Wednesday. Find total number of pens sold on Friday and Saturday together?

- A. 92 B. 122
C. 172 D. 125
E. 105

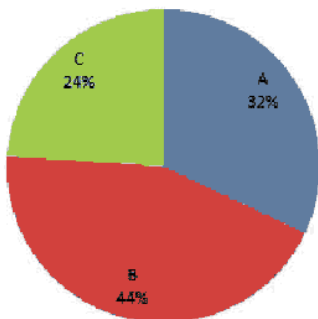
73. Find the difference between total number of pens sold on Monday and Tuesday together to total number of pens sold on Thursday and Friday together?

- A. 25 B. 40
C. 5 D. 22
E. 10

74. Total number of pens sold on Tuesday is 25% more than total number of pens sold on Sunday. Find total of pens sold on Sunday?
 A. 72 B. 60
 C. 94 D. 43
 E. 75
75. Out of the total pens sold on Thursday, 20% are blue ink pen. Out of remaining 25% are red ink pen and remaining are black in pen. Find total number of blue and black in pen. Find total no. of blue and black ink pen sold on Thursday?
 A. 36 B. 46
 C. 56 D. 66
 E. 55

Direction (76-80): Pie chart given below shows total number of workers in three different companies. Table given below shows ratio between officers and workers working in these companies. Study the data carefully and answer the following questions

Sales



Company	Officers: Workers
A	1: 16
B	1: 18
C	1: 12

Note: total employees = officers + workers

76. Find the difference between total number of workers in company 'A' and total number of workers in company 'B' and 'C' together?
 A. 324 B. 423
 C. 523 D. 624
 E. 124
77. Total number of employees in company 'B' is how much more than total number of employees in company 'C'.

- A. 184 B. 176
 C. 225 D. 265
 E. 125
78. Total number of officers in company 'A' is how much less than total number of officers in company 'B'?
 A. 1 B. 7
 C. 9 D. 4
 E. 8
79. Find the ratio between total number of workers in company A and C together to total number of officers in company A and C together?
 A. 17: 1 B. 12: 7
 C. 14: 1 D. 18: 1
 E. 22: 3
80. Total number of officers and workers in company D is 50% and 25% more than total number of officers and workers in company 'C' respectively. Find total number of employees in company 'D'?
 A. 297 B. 279
 C. 972 D. 927
 E. 227
81. If a speed of boat is 500% more than the speed of a current.
 Quantity I - 'X': If boat can travel a distance of 63 km 3 hr, in downstream then 'X' is the speed of the boat in upstream (km/hr.)
 Quantity II- 15 km/hr
 A. Quantity I > Quantity II
 B. Quantity I < Quantity II
 C. Quantity I ≥ Quantity II
 D. Quantity I ≤ Quantity II
 E. Quantity I = Quantity II or No relation
82. Sum of 8 Consecutive even number is S_1 .
 Quantity I - Sum of second number and eight number in S_1
 Quantity II - Sum of third number and sixth number in S_1
 A. Quantity I > Quantity II
 B. Quantity I < Quantity II
 C. Quantity I ≥ Quantity II
 D. Quantity I ≤ Quantity II
 E. Quantity I = Quantity II or No relation
83. Quantity I. 'X': $X^2 + X - 6 = 0$
 Quantity II. 'y': $y^2 + 7y + 12 = 0$
 A. Quantity I > Quantity II
 B. Quantity I < Quantity II
 C. Quantity I ≥ Quantity II
 D. Quantity I ≤ Quantity II
 E. Quantity I = Quantity II or No relation

84. An article is sold at Rs. 1500 after allowing discount of 12.5% on Marked price.
Quantity I - Rs. 550
Quantity II - Marked price of article.
A. Quantity I > Quantity II
B. Quantity I < Quantity II
C. Quantity I ≥ Quantity II
D. Quantity I ≤ Quantity II
E. Quantity I = Quantity II or No relation
85. A's efficiency is 25% more than B
Quantity I - 'X': A can do 5/6th of total work in 'X' days
Quantity II - 'Y': B can do 4/5th of total work in 'Y' days
A. Quantity I > Quantity II
B. Quantity I < Quantity II
C. Quantity I ≥ Quantity II
D. Quantity I ≤ Quantity II
E. Quantity I = Quantity II or No relation
86. Sum of volume of cylinder (S) and volume of cone (C) is $2190\pi \text{ cm}^2$ & height of both cylinder and cone is same i.e., 10 cm. if radius of cone is 15 cm find the ratio of radius of S to radius of C?
A. 4:5
B. 3:7
C. 3:5
D. 7:5
E. 1:5
87. **Direction:** Find the value of (?) in following approximation questions:
 $? \% \text{ of } 179.99 = \sqrt{(21.02)^2 + (17.98)^2} + 60.0\% \text{ of } 659.98$
A. 20
B. 50
C. 70
D. 30
E. 15
88. **Direction:** Find the value of (?) in following approximation questions:
 $\frac{339.99}{?} = \sqrt{143.99} + \sqrt{64.01}$
A. 19
B. 17
C. 12
D. 23
E. 40
89. **Direction:** Find the value of (?) in following approximation questions:
 $34.02\% \text{ of } 550.09 + ? = 297.07 + \sqrt{728.95}$
A. 147
B. 22
C. 18
D. 37
E. 57
90. **Direction:** Find the value of (?) in following approximation questions:
 $2^? = 32.01 + 128.01 \times 1023.99 + 7.99$
A. 5
B. 1
C. 2
D. 3
E. 4

91. **Direction:** Find the value of (?) in following approximation questions:
 $(? + 9.97) \times 12.8 = 20.12\% \text{ of } 1319.97$
A. 210
B. 220
C. 270
D. 290
E. 205
- Direction (92-96):** There are three persons A, B and C who each invested in two different schemes S_1 and S_2 . A invested Rs. 80,000 for 2 yr in scheme S_1 and 30,000 for 4 years in scheme S_2 . B invested Rs 30,000 for year in S_1 and he did not invest in scheme B. B also obtained a profit of 10,000 by selling his car. C invested Rs 50000 for 5 years in scheme S_1 and 10000 for 3 year in scheme S_2 . Total profit obtained from scheme S_1 is 2 lakh and scheme S_2 is 90,000.
92. Profit obtained by A from scheme S_1 is what percent of profit obtained by C from scheme S_2 .
A. $326\frac{8}{9}\%$
B. $317\frac{8}{9}\%$
C. $326\frac{8}{9}\%$
D. $335\frac{5}{9}\%$
E. $355\frac{5}{9}\%$
93. If A had invested his sum at Simple interest for 3 yr at the rate of R% p.a. instead in scheme S_1 and B has invested his sum at compound interest at $(R + 5\%)$ p.a. for 1 year and difference in interest obtained is 30,000 then find value of R%.
A. 15%
B. 7%
C. 5%
D. 8%
E. 2%
94. If sum of investment of A in both schemes and total profit obtained by A from both scheme is invested at compound interest at the rate of 20% p.a. then find the total compound interest obtained in 2 yr
A. 106240
B. 108240
C. 102208
D. 123480
E. 106500
95. What is the average of profit attained by A from scheme S_1 and profit of C obtained from scheme S_2 .
A. 43000
B. 41000
C. 54000
D. 56000
E. 47000

96. What is the ratio of total profit obtained by B and profit obtained by C from scheme S1
A. 23: 47 B. 54: 47
C. 36: 43 D. 23: 50
E. 27: 50
97. What is the probability of forming word from the letters of word "IMPEACH" such that all vowels come together?
A. $\frac{1}{7}$ B. $\frac{4}{7}$
C. $\frac{1}{7}$ D. $\frac{4}{35}$
E. $\frac{13}{35}$
98. Sum of A's and B's age 6 years ago is 88. A's age 18 yrs ago is equal to B's age 6 years ago. Find the age of A two year hence?
A. 51 yrs B. 62 yrs
C. 22 yrs D. 58 yr
E. 18 yrs

99. In a box there are 6 blue ball, X red balls & 10 green balls. Probability of choosing one red ball from the given box is $\frac{1}{3}$, then find the sum of red and blue balls in the box?
A. 14 B. 11
C. 10 D. 17
E. 15
100. Train A of length 120 m can cross a platform of length 240m in 18 second the ratio of speed train A and Train B is 4: 5. The find the length of train B if train B can cross a pole in 12 seconds.
A. 300m B. 330m
C. 310m D. 370m
E. 340m
