

# National Testing Agency

**Question Paper Name :** PGQP24 15th Sep 2021 Shift 2  
**Subject Name :** PGQP24  
**Creation Date :** 2021-09-15 22:47:26  
**Duration :** 120  
**Total Marks :** 400  
**Display Marks:** Yes

## PGQP24

**Group Number :** 1  
**Group Id :** 19088929  
**Group Maximum Duration :** 0  
**Group Minimum Duration :** 120  
**Show Attended Group? :** No  
**Edit Attended Group? :** No  
**Break time :** 0  
**Group Marks :** 400  
**Is this Group for Examiner? :** No

## PART A - General

**Section Id :** 19088977  
**Section Number :** 1  
**Section type :** Online  
**Mandatory or Optional :** Mandatory

<b>Number of Questions :</b>	25
<b>Number of Questions to be attempted :</b>	25
<b>Section Marks :</b>	100
<b>Enable Mark as Answered Mark for Review and Clear Response :</b>	Yes
<b>Sub-Section Number :</b>	1
<b>Sub-Section Id :</b>	190889113
<b>Question Shuffling Allowed :</b>	Yes

**Question Number : 1 Question Id : 1908893299 Question Type : MCQ Option Shuffling : No Is Question Mandatory : No Correct Marks : 4 Wrong Marks : 1**

Select the correct word that can best complete the given sentence:

By training children at a young age we can bring out the \_\_\_\_\_ talents in them.

- |                 |              |
|-----------------|--------------|
| (1) artificial  | (2) budding  |
| (3) superficial | (4) inherent |

**Options :**

19088913101. 1

19088913102. 2

19088913103. 3

19088913104. 4

**Question Number : 2 Question Id : 1908893300 Question Type : MCQ Option Shuffling : No Is Question Mandatory : No Correct Marks : 4 Wrong Marks : 1**

From the choices given below, select the pair which exhibits the same relationship as the one in capitalized pair of words:

SOUP : APPETIZER

- |                        |                       |
|------------------------|-----------------------|
| (1) coffee : bean      | (2) pudding : dessert |
| (3) breakfast : cereal | (4) tea : drink       |

**Options :**

19088913105. 1

19088913106. 2

19088913107. 3

19088913108. 4

**Question Number : 3 Question Id : 1908893301 Question Type : MCQ Option Shuffling : No Is Question Mandatory : No**

**Correct Marks : 4 Wrong Marks : 1**

Select the most suitable synonym :

MUDDLE

- |              |               |
|--------------|---------------|
| (1) whisper  | (2) horde     |
| (3) disorder | (4) speculate |

**Options :**

19088913109. 1

19088913110. 2

19088913111. 3

19088913112. 4

**Question Number : 4 Question Id : 1908893302 Question Type : MCQ Option Shuffling : No Is Question Mandatory : No**

**Correct Marks : 4 Wrong Marks : 1**

Identify the part of the body with which the disease is associated:

Leukemia

- |           |                      |
|-----------|----------------------|
| (1) heart | (2) skin             |
| (3) lungs | (4) lymphatic system |

**Options :**

19088913113. 1

19088913114. 2

19088913115. 3

19088913116. 4

**Question Number : 5 Question Id : 1908893303 Question Type : MCQ Option Shuffling : No Is Question Mandatory : No**

**Correct Marks : 4 Wrong Marks : 1**

Identify the meaning of the expression below from the options given:

Per se

- |                      |                 |
|----------------------|-----------------|
| (1) by word of mouth | (2) gossip      |
| (3) by itself        | (4) spontaneous |

**Options :**

19088913117. 1

19088913118. 2

19088913119. 3

19088913120. 4

**Question Number : 6 Question Id : 1908893304 Question Type : MCQ Option Shuffling : No Is Question Mandatory : No**

**Correct Marks : 4 Wrong Marks : 1**

Identify the meaning of the underlined word:

Home appliances manufacturer 'B' electrical Limited is looking for acquisitions in the domestic market.

- |                |                |
|----------------|----------------|
| (1) obtainment | (2) apprentice |
| (3) attrition  | (4) attention  |

**Options :**

19088913121. 1

19088913122. 2

19088913123. 3

19088913124. 4

**Question Number : 7 Question Id : 1908893305 Question Type : MCQ Option Shuffling : No Is Question Mandatory : No**

**Correct Marks : 4 Wrong Marks : 1**

Identify the meaning of the phrase below from the options given:

Leave to a person by a will

- |             |              |
|-------------|--------------|
| (1) beseech | (2) billow   |
| (3) blanch  | (4) bequeath |

**Options :**

19088913125. 1

19088913126. 2

19088913127. 3

19088913128. 4

**Question Number : 8 Question Id : 1908893306 Question Type : MCQ Option Shuffling : No Is Question Mandatory : No**

**Correct Marks : 4 Wrong Marks : 1**

Select the most suitable antonym:

SKIMPY

- (1) glaring
- (3) affluent

- (2) modest
- (4) generous

**Options :**

19088913129. 1

19088913130. 2

19088913131. 3

19088913132. 4

**Question Number : 9 Question Id : 1908893307 Question Type : MCQ Option Shuffling : No Is**

**Question Mandatory : No**

**Correct Marks : 4 Wrong Marks : 1**

Identify the meaning of the idiom from the options given:

A man of the world

- (1) headstrong and arrogant
- (2) highly trustworthy
- (3) very popular because of success
- (4) highly experienced in many fields

**Options :**

19088913133. 1

19088913134. 2

19088913135. 3

19088913136. 4

**Question Number : 10 Question Id : 1908893308 Question Type : MCQ Option Shuffling : No Is**

**Question Mandatory : No**

**Correct Marks : 4 Wrong Marks : 1**

Select the correct word from the answer:

Now a days, it is difficult to \_\_\_\_\_ good books in English.

(1) track

(2) verify

(3) find

(4) know

**Options :**

19088913137. 1

19088913138. 2

19088913139. 3

19088913140. 4

**Question Number : 11 Question Id : 1908893309 Question Type : MCQ Option Shuffling : No Is Question Mandatory : No**

**Correct Marks : 4 Wrong Marks : 1**

If Neena says "Anita's father Raman is the only son of my father-in-law Mahipal", then how is Bindu, who is the sister of Anita, related to Mahipal?

(1) Neice

(2) Daughter

(3) Wife

(4) None of these

**Options :**

19088913141. 1

19088913142. 2

19088913143. 3

19088913144. 4

**Question Number : 12 Question Id : 1908893310 Question Type : MCQ Option Shuffling : No Is Question Mandatory : No**

**Correct Marks : 4 Wrong Marks : 1**

Choose the missing term out of the given alternatives.

Y, W, U, S, Q, \_\_, \_\_

(1) N, J

(2) M, L

(3) J, R

(4) O, M

**Options :**

19088913145. 1

19088913146. 2

19088913147. 3

19088913148. 4

**Question Number : 13 Question Id : 1908893311 Question Type : MCQ Option Shuffling : No Is**

**Question Mandatory : No**

**Correct Marks : 4 Wrong Marks : 1**

Arrange the given words in alphabetical order and tick the one that comes last.

(1) Abandon

(2) Actuate

(3) Accumulate

(4) Acquit

**Options :**

19088913149. 1

19088913150. 2

19088913151. 3

19088913152. 4

**Question Number : 14 Question Id : 1908893312 Question Type : MCQ Option Shuffling : No Is**

**Question Mandatory : No**

**Correct Marks : 4 Wrong Marks : 1**

Raman ranks sixteenth from the top and forty nine from the bottom in a class. How many students are there in the class?

(1) 64

(2) 65

(3) 66

(4) None of these



**Options :**

19088913153. 1

19088913154. 2

19088913155. 3

19088913156. 4

**Question Number : 15 Question Id : 1908893313 Question Type : MCQ Option Shuffling : No Is Question Mandatory : No**

**Correct Marks : 4 Wrong Marks : 1**

If  $\times$  means  $\div$ ,  $-$  means  $\times$ ,  $\div$  means  $+$  and  $+$  means  $-$ , then

$$(3 - 15 \div 19) \times 8 + 6 = ?$$

(1) 8

(2) 4

(3) 2

(4) -1

**Options :**

19088913157. 1

19088913158. 2

19088913159. 3

19088913160. 4

**Question Number : 16 Question Id : 1908893314 Question Type : MCQ Option Shuffling : No Is Question Mandatory : No**

**Correct Marks : 4 Wrong Marks : 1**

Choose the correct alternative based on relationship :

Botany : Plants :: Entomology : ?

(1) Snakes

(2) Insects

(3) Birds

(4) Germs

**Options :**

19088913161. 1

19088913162. 2

19088913163. 3

19088913164. 4

**Question Number : 17 Question Id : 1908893315 Question Type : MCQ Option Shuffling : No Is Question Mandatory : No**

**Correct Marks : 4 Wrong Marks : 1**

Choose the correct answer:

$$9572 - 4018 - 2164 = ?$$

(1) 3300

(2) 3390

(3) 3570

(4) 7718

**Options :**

19088913165. 1

19088913166. 2

19088913167. 3

19088913168. 4

**Question Number : 18 Question Id : 1908893316 Question Type : MCQ Option Shuffling : No Is Question Mandatory : No**

**Correct Marks : 4 Wrong Marks : 1**

The H.C.F. (Highest Common Factor) of 2923 and 3239 is :

(1) 37

(2) 47

(3) 73

(4) 79

**Options :**

19088913169. 1

19088913170. 2

19088913171. 3

19088913172. 4

**Question Number : 19 Question Id : 1908893317 Question Type : MCQ Option Shuffling : No Is Question Mandatory : No**

**Correct Marks : 4 Wrong Marks : 1**

One fifth of a number exceeds one seventh of the same by 10. The number is :

- (1) 125 (2) 150  
(3) 175 (4) 200

**Options :**

19088913173. 1

19088913174. 2

19088913175. 3

19088913176. 4

**Question Number : 20 Question Id : 1908893318 Question Type : MCQ Option Shuffling : No Is Question Mandatory : No**

**Correct Marks : 4 Wrong Marks : 1**

If a number, divided by 4, is reduced by 21, the number is :

- (1) 18 (2) 20  
(3) 28 (4) 38

**Options :**

19088913177. 1

19088913178. 2

19088913179. 3

19088913180. 4

**Question Number : 21 Question Id : 1908893319 Question Type : MCQ Option Shuffling : No Is Question Mandatory : No**

**Correct Marks : 4 Wrong Marks : 1**

The newly launched 100 rupees notes have the motif of \_\_\_\_\_ on the reverse side.

- (1) Mangalyaan (2) Sanchi stupa  
(3) Hampi with chariot (4) Rani ki vav

**Options :**

19088913181. 1

19088913182. 2

19088913183. 3

19088913184. 4

**Question Number : 22 Question Id : 1908893320 Question Type : MCQ Option Shuffling : No Is Question Mandatory : No**

**Correct Marks : 4 Wrong Marks : 1**

The 'Mission Purvodaya' initiative is related to the development of which of the following?

- |                        |                  |
|------------------------|------------------|
| (1) Agriculture sector | (2) Space sector |
| (3) Dairy sector       | (4) Steel sector |

**Options :**

19088913185. 1

19088913186. 2

19088913187. 3

19088913188. 4

**Question Number : 23 Question Id : 1908893321 Question Type : MCQ Option Shuffling : No Is Question Mandatory : No**

**Correct Marks : 4 Wrong Marks : 1**

Generally wooden doors are difficult to open or close during rainy season because of

- |               |                    |
|---------------|--------------------|
| (1) Diffusion | (2) Imbibition     |
| (3) Osmosis   | (4) Photosynthesis |

**Options :**

19088913189. 1

19088913190. 2

19088913191. 3

19088913192. 4

**Question Number : 24 Question Id : 1908893322 Question Type : MCQ Option Shuffling : No Is**

**Question Mandatory : No**

**Correct Marks : 4 Wrong Marks : 1**

Mahabhasya, an outstanding work in the fields of Sanskrit grammar, is attributed to

- |               |             |
|---------------|-------------|
| (1) Ghosha    | (2) Ashwins |
| (3) Patanjali | (4) Kalidas |

**Options :**

19088913193. 1

19088913194. 2

19088913195. 3

19088913196. 4

**Question Number : 25 Question Id : 1908893323 Question Type : MCQ Option Shuffling : No Is**

**Question Mandatory : No**

**Correct Marks : 4 Wrong Marks : 1**

Who among the following passed the Bengal Sati Regulation Act, 1829, which declared the practice of 'Sati' a punishable offence?

- |                           |                     |
|---------------------------|---------------------|
| (1) Lord William Bentinck | (2) Lord Dalhousie  |
| (3) Lord Wellesley        | (4) Warren Hastings |

**Options :**

19088913197. 1

19088913198. 2

19088913199. 3

19088913200. 4

## **PART B - PHARMACEUTICS**

**Section Id :**

19088978

**Section Number :**

2

<b>Section type :</b>	Online
<b>Mandatory or Optional :</b>	Mandatory
<b>Number of Questions :</b>	75
<b>Number of Questions to be attempted :</b>	75
<b>Section Marks :</b>	300
<b>Enable Mark as Answered Mark for Review and Clear Response :</b>	Yes
<b>Sub-Section Number :</b>	1
<b>Sub-Section Id :</b>	190889114
<b>Question Shuffling Allowed :</b>	Yes

**Question Number : 26 Question Id : 1908893324 Question Type : MCQ Option Shuffling : No Is Question Mandatory : No Correct Marks : 4 Wrong Marks : 1**

Higher the HLB value of surfactant, more \_\_\_\_\_ it is.

- |                 |                   |
|-----------------|-------------------|
| (1) Hydrophilic | (2) Lipophilic    |
| (3) Amphoteric  | (4) None of these |

**Options :**

- 19088913201. 1
- 19088913202. 2
- 19088913203. 3
- 19088913204. 4

**Question Number : 27 Question Id : 1908893325 Question Type : MCQ Option Shuffling : No Is Question Mandatory : No Correct Marks : 4 Wrong Marks : 1**

Bingham bodies show which type of flow?

- |                    |                  |
|--------------------|------------------|
| (1) Newtonian flow | (2) Plastic flow |
| (3) Pseudoplastic  | (4) Dilatant     |

**Options :**

19088913205. 1

19088913206. 2

19088913207. 3

19088913208. 4

**Question Number : 28 Question Id : 1908893326 Question Type : MCQ Option Shuffling : No Is Question Mandatory : No**

**Correct Marks : 4 Wrong Marks : 1**

Which of the following vaccine is the combination of two different adenoviruses (Ad26 and Ad5)?

(1) Covaxin

(2) Covishield

(3) Covovax

(4) Sputnik V

**Options :**

19088913209. 1

19088913210. 2

19088913211. 3

19088913212. 4

**Question Number : 29 Question Id : 1908893327 Question Type : MCQ Option Shuffling : No Is Question Mandatory : No**

**Correct Marks : 4 Wrong Marks : 1**

Gluconeogenesis is regulated by

(1) ACTH

(2) Glucagon

(3) Progesterone

(4) Insulin

**Options :**

19088913213. 1

19088913214. 2

19088913215. 3

19088913216. 4

**Question Number : 30 Question Id : 1908893328 Question Type : MCQ Option Shuffling : No Is Question Mandatory : No**

**Correct Marks : 4 Wrong Marks : 1**

SARS-CoV-2 is a

- (1) Double stranded RNA-enveloped virus
- (2) Single stranded RNA-enveloped virus
- (3) Double stranded DNA virus
- (4) Single stranded DNA virus

**Options :**

19088913217. 1

19088913218. 2

19088913219. 3

19088913220. 4

**Question Number : 31 Question Id : 1908893329 Question Type : MCQ Option Shuffling : No Is Question Mandatory : No**

**Correct Marks : 4 Wrong Marks : 1**

Describe the coronavirus structure

- (1) Club shaped glycoprotein spikes protrude through a lipid bilayer
- (2) An icosahedral structure with an envelope
- (3) An icosahedral large pleomorphic virus
- (4) Large regimented barrel shaped virus

**Options :**

19088913221. 1

19088913222. 2

19088913223. 3



19088913224. 4

**Question Number : 32 Question Id : 1908893330 Question Type : MCQ Option Shuffling : No Is Question Mandatory : No**

**Correct Marks : 4 Wrong Marks : 1**

On November 19, 2020, the FDA issued an Emergency Use Authorization (EUA) for in hospitalized adults and children aged  $\geq 2$  years with COVID-19 who require supplemental oxygen, invasive mechanical ventilation, or extracorporeal membrane oxygenation. Which of the following drug is given in combination with remdesivir?

- |                 |                 |
|-----------------|-----------------|
| (1) Baricitinib | (2) Trastuzumab |
| (3) Doxycycline | (4) Lopinavir   |

**Options :**

19088913225. 1

19088913226. 2

19088913227. 3

19088913228. 4

**Question Number : 33 Question Id : 1908893331 Question Type : MCQ Option Shuffling : No Is Question Mandatory : No**

**Correct Marks : 4 Wrong Marks : 1**

*Digitalis purpurea* is a cardiotonic drug belonging to the family

- |                  |                      |
|------------------|----------------------|
| (1) Apocynaceae  | (2) Lilliaceae       |
| (3) Polygonaceae | (4) Scrophulariaceae |

**Options :**

19088913229. 1

19088913230. 2

19088913231. 3

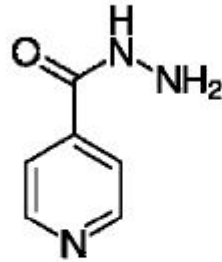
19088913232. 4

Question Number : 34 Question Id : 1908893332 Question Type : MCQ Option Shuffling : No Is

Question Mandatory : No

Correct Marks : 4 Wrong Marks : 1

The chemical structure



is known as

(1) Isoniazid

(2) Pyrazinamide

(3) Ethoxinamide

(4) Rifampicin

Options :

19088913233. 1

19088913234. 2

19088913235. 3

19088913236. 4

Question Number : 35 Question Id : 1908893333 Question Type : MCQ Option Shuffling : No Is

Question Mandatory : No

Correct Marks : 4 Wrong Marks : 1

Pregn-4-ene-3,20-dione is

(1) Norethisterone

(2) Ethynodiol

(3) Ethisterone

(4) Progesterone

Options :

19088913237. 1

19088913238. 2

19088913239. 3

19088913240. 4

**Question Number : 36 Question Id : 1908893334 Question Type : MCQ Option Shuffling : No Is**

**Question Mandatory : No**

**Correct Marks : 4 Wrong Marks : 1**

Which of the following ring is present in sulphamethoxazole

- (1) Pyrazole (2) Thiazole  
(3) Oxazole (4) Isoxazole

**Options :**

19088913241. 1

19088913242. 2

19088913243. 3

19088913244. 4

**Question Number : 37 Question Id : 1908893335 Question Type : MCQ Option Shuffling : No Is**

**Question Mandatory : No**

**Correct Marks : 4 Wrong Marks : 1**

Which of the following acids has the highest degree of ionization in an aqueous solution

- (1) Aspirin pKa- 3.5 (2) Indomethacin pKa- 4.5  
(3) Warfarin pKa- 5.1 (4) Ibuprofen pKa- 5.2

**Options :**

19088913245. 1

19088913246. 2

19088913247. 3

19088913248. 4

**Question Number : 38 Question Id : 1908893336 Question Type : MCQ Option Shuffling : No Is**

**Question Mandatory : No**

**Correct Marks : 4 Wrong Marks : 1**

Sorbitan esters, used as nonionic surfactants, are

- |               |                 |
|---------------|-----------------|
| (1) Tweens    | (2) Spans       |
| (3) Polawaxes | (4) Poloxalkols |

**Options :**

- 19088913249. 1
- 19088913250. 2
- 19088913251. 3
- 19088913252. 4

**Question Number : 39 Question Id : 1908893337 Question Type : MCQ Option Shuffling : No Is Question Mandatory : No**

**Correct Marks : 4 Wrong Marks : 1**

What is the starting material of retinol?

- |                                   |                                       |
|-----------------------------------|---------------------------------------|
| (1) Butyraldehyde and formic acid | (2) Beta-ionone and methylvinylactone |
| (3) Ribulose                      | (4) Beta -ionone and methyl lactone   |

**Options :**

- 19088913253. 1
- 19088913254. 2
- 19088913255. 3
- 19088913256. 4

**Question Number : 40 Question Id : 1908893338 Question Type : MCQ Option Shuffling : No Is Question Mandatory : No**

**Correct Marks : 4 Wrong Marks : 1**

What is the common name of cis-9-octadecanoic acid?

- |                 |                      |
|-----------------|----------------------|
| (1) Oleic acid  | (2) Linoleic acid    |
| (3) Lauric acid | (4) Palmitoleic acid |

**Options :**

19088913257. 1

19088913258. 2

19088913259. 3

19088913260. 4

**Question Number : 41 Question Id : 1908893339 Question Type : MCQ Option Shuffling : No Is Question Mandatory : No**

**Correct Marks : 4 Wrong Marks : 1**

Which of the following drug is used to treat hypertension during pregnancy?

- |                 |               |
|-----------------|---------------|
| (1) Hydralazine | (2) Diazoxide |
| (3) Clonidine   | (4) Minoxidil |

**Options :**

19088913261. 1

19088913262. 2

19088913263. 3

19088913264. 4

**Question Number : 42 Question Id : 1908893340 Question Type : MCQ Option Shuffling : No Is Question Mandatory : No**

**Correct Marks : 4 Wrong Marks : 1**

Indicate which one of the following drugs may interfere with the uptake of  $^{123}\text{I}$  in the thyroid gland

- |                              |                    |
|------------------------------|--------------------|
| (1) Beta-blockers            | (2) Alpha blockers |
| (3) Calcium channel blockers | (4) Amiodarone     |

**Options :**

19088913265. 1

19088913266. 2

19088913267. 3

19088913268. 4

**Question Number : 43 Question Id : 1908893341 Question Type : MCQ Option Shuffling : No Is**

**Question Mandatory : No**

**Correct Marks : 4 Wrong Marks : 1**

Witepsol is a type of

- |                     |                      |
|---------------------|----------------------|
| (1) Aqueous base    | (2) Emulsifying base |
| (3) Oleagenous base | (4) None of these    |

**Options :**

19088913269. 1

19088913270. 2

19088913271. 3

19088913272. 4

**Question Number : 44 Question Id : 1908893342 Question Type : MCQ Option Shuffling : No Is**

**Question Mandatory : No**

**Correct Marks : 4 Wrong Marks : 1**

Dip tube in aerosol container is made up of

- |                                |                      |
|--------------------------------|----------------------|
| (1) Polyethylene/polypropylene | (2) Propylene glycol |
| (3) PEG                        | (4) All              |

**Options :**

19088913273. 1

19088913274. 2

19088913275. 3

19088913276. 4

**Question Number : 45 Question Id : 1908893343 Question Type : MCQ Option Shuffling : No Is**

**Question Mandatory : No**

**Correct Marks : 4 Wrong Marks : 1**

Vanishing creams are called so because

- (1) They disappear during formulation mix
- (2) They vanish during removal from skin surface
- (3) They disappear after rubbing application
- (4) None of these

**Options :**

19088913277. 1

19088913278. 2

19088913279. 3

19088913280. 4

**Question Number : 46 Question Id : 1908893344 Question Type : MCQ Option Shuffling : No Is**

**Question Mandatory : No**

**Correct Marks : 4 Wrong Marks : 1**

Cold creams are

- (1) O/W-type borax cream
- (2) W/O-type borax cream
- (3) O/W-type cationic emulsifier wax cream
- (4) W/O-type triethanolamine cream

**Options :**

19088913281. 1

19088913282. 2

19088913283. 3

19088913284. 4

**Question Number : 47 Question Id : 1908893345 Question Type : MCQ Option Shuffling : No Is**

**Question Mandatory : No**

**Correct Marks : 4 Wrong Marks : 1**

The stationary phase used in gel permeation chromatography

- (1) Alumina
- (2) Charcoal
- (3) Squalene
- (4) Styrene divinyl benzene copolymer

**Options :**

19088913285. 1

19088913286. 2

19088913287. 3

19088913288. 4

**Question Number : 48 Question Id : 1908893346 Question Type : MCQ Option Shuffling : No Is Question Mandatory : No**

**Correct Marks : 4 Wrong Marks : 1**

Bathochromic shift depends on:

- |                           |                            |
|---------------------------|----------------------------|
| (1) Isolated double bonds | (2) Conjugated double bond |
| (3) Thermal conductivity  | (4) Absorption of light    |

**Options :**

19088913289. 1

19088913290. 2

19088913291. 3

19088913292. 4

**Question Number : 49 Question Id : 1908893347 Question Type : MCQ Option Shuffling : No Is Question Mandatory : No**

**Correct Marks : 4 Wrong Marks : 1**

RP-HPLC method contains

- (1) Stationary phase is polar and mobile phase is non-polar
- (2) Stationary phase is non-polar and mobile phase is polar
- (3) Stationary phase is non-polar and mobile phase is non-polar
- (4) Stationary phase is polar and mobile phase is polar

**Options :**

19088913293. 1

19088913294. 2

19088913295. 3



19088913296. 4

**Question Number : 50 Question Id : 1908893348 Question Type : MCQ Option Shuffling : No Is Question Mandatory : No**

**Correct Marks : 4 Wrong Marks : 1**

In TLC silica-G is used as coating material 'G' means

- (1) Gelatin and used to improve solubility of silica
- (2) Gelatin and used as a binder
- (3) Gypsum and used to improve solubility of silica
- (4) Gypsum and used as a binder

**Options :**

19088913297. 1

19088913298. 2

19088913299. 3

19088913300. 4

**Question Number : 51 Question Id : 1908893349 Question Type : MCQ Option Shuffling : No Is Question Mandatory : No**

**Correct Marks : 4 Wrong Marks : 1**

Identity non-ionic surfactant

- (1) Sodium lauryl sulfate
- (2) Spans
- (3) Benzalkonium chloride
- (4) Lecithin

**Options :**

19088913301. 1

19088913302. 2

19088913303. 3

19088913304. 4

**Question Number : 52 Question Id : 1908893350 Question Type : MCQ Option Shuffling : No Is Question Mandatory : No**

**Correct Marks : 4 Wrong Marks : 1**

Finger print region in IR spectra is

- (1) 1400-4000  $\text{cm}^{-1}$  (2) 4000-8000  $\text{cm}^{-1}$   
(3) 400-1400  $\text{cm}^{-1}$  (4) None of these

**Options :**

19088913305. 1

19088913306. 2

19088913307. 3

19088913308. 4

**Question Number : 53 Question Id : 1908893351 Question Type : MCQ Option Shuffling : No Is**

**Question Mandatory : No**

**Correct Marks : 4 Wrong Marks : 1**

Volume capacity of '000' size capsule is

- (1) 0.95 ml (2) 0.85 ml  
(3) 0.75 ml (4) 1.37ml

**Options :**

19088913309. 1

19088913310. 2

19088913311. 3

19088913312. 4

**Question Number : 54 Question Id : 1908893352 Question Type : MCQ Option Shuffling : No Is**

**Question Mandatory : No**

**Correct Marks : 4 Wrong Marks : 1**

Chemically Mayer's reagent is

- (1) Potassium mercuric iodide (2) Potassium bismuth iodide  
(3)  $\text{I}_2$  and KI (4) Picric acid

**Options :**

19088913313. 1

19088913314. 2

19088913315. 3

19088913316. 4

**Question Number : 55 Question Id : 1908893353 Question Type : MCQ Option Shuffling : No Is Question Mandatory : No**

**Correct Marks : 4 Wrong Marks : 1**

*Amylases consists of which type of glycosidic linkage*

(1)  $\alpha$  1-4

(2)  $\alpha$  1-2

(3)  $\beta$  1-4

(4)  $\beta$  1-2

**Options :**

19088913317. 1

19088913318. 2

19088913319. 3

19088913320. 4

**Question Number : 56 Question Id : 1908893354 Question Type : MCQ Option Shuffling : No Is Question Mandatory : No**

**Correct Marks : 4 Wrong Marks : 1**

*Which one of the following is not an ex-officio member of Pharmacy Council of India?*

(1) The Director General of Health Services

(2) The Director of Central Drugs Laboratory

(3) The Drugs Controller General of India

(4) The Director of Pharmacopoeia Laboratory

**Options :**

19088913321. 1

19088913322. 2

19088913323. 3

19088913324. 4

**Question Number : 57 Question Id : 1908893355 Question Type : MCQ Option Shuffling : No Is Question Mandatory : No**

**Correct Marks : 4 Wrong Marks : 1**

Coulter counter is used in determination of

- |                           |                      |
|---------------------------|----------------------|
| (1) particle surface area | (2) particle size    |
| (3) particle volume       | (4) all of the above |

**Options :**

19088913325. 1

19088913326. 2

19088913327. 3

19088913328. 4

**Question Number : 58 Question Id : 1908893356 Question Type : MCQ Option Shuffling : No Is Question Mandatory : No**

**Correct Marks : 4 Wrong Marks : 1**

Alkaloids are not precipitated by

- |                     |                           |
|---------------------|---------------------------|
| (1) Mayer's reagent | (2) Dragendroff's Reagent |
| (3) Picric acid     | (4) Millon's reagent      |

**Options :**

19088913329. 1

19088913330. 2

19088913331. 3

19088913332. 4

**Question Number : 59 Question Id : 1908893357 Question Type : MCQ Option Shuffling : No Is Question Mandatory : No**

**Correct Marks : 4 Wrong Marks : 1**

Which solvent used in NMR analysis

- |                          |              |
|--------------------------|--------------|
| (1) Chloroform           | (2) Acetone  |
| (3) Carbon tetrachloride | (4) Methanol |

**Options :**

19088913333. 1

19088913334. 2

19088913335. 3

19088913336. 4

**Question Number : 60 Question Id : 1908893358 Question Type : MCQ Option Shuffling : No Is**

**Question Mandatory : No**

**Correct Marks : 4 Wrong Marks : 1**

The Schedule in Drugs and Cosmetics Act that deals with the requirements and guidelines for clinical trials, import and manufacture of new drugs is

- |                  |                  |
|------------------|------------------|
| (1) Schedule 'O' | (2) Schedule 'M' |
| (3) Schedule 'F' | (4) Schedule 'Y' |

**Options :**

19088913337. 1

19088913338. 2

19088913339. 3

19088913340. 4

**Question Number : 61 Question Id : 1908893359 Question Type : MCQ Option Shuffling : No Is**

**Question Mandatory : No**

**Correct Marks : 4 Wrong Marks : 1**

How many parts of 10 % ointment be mixed with 2 parts of 15 % ointment to get 12% ointment

- |       |       |
|-------|-------|
| (1) 2 | (2) 3 |
| (3) 5 | (4) 6 |

**Options :**

19088913341. 1

19088913342. 2

19088913343. 3

19088913344. 4

**Question Number : 62 Question Id : 1908893360 Question Type : MCQ Option Shuffling : No Is Question Mandatory : No**

**Correct Marks : 4 Wrong Marks : 1**

A drug whose solubility is 1.5 g/L in water, when given orally at a dose of 400 mg is absorbed upto 95% of the administered dose. The drug belongs to which class according to the BCS classification?

- |               |              |
|---------------|--------------|
| (1) Class I   | (2) Class II |
| (3) Class III | (4) Class IV |

**Options :**

19088913345. 1

19088913346. 2

19088913347. 3

19088913348. 4

**Question Number : 63 Question Id : 1908893361 Question Type : MCQ Option Shuffling : No Is Question Mandatory : No**

**Correct Marks : 4 Wrong Marks : 1**

Which of the following statements is FALSE for artemisinin?

- (1) It is a sesquiterpene lactone endoperoxide
- (2) It is a drug of choice in prophylaxis of malaria
- (3) It does not cure relapsing malaria
- (4) It is useful in treatment of cerebral falciparum malaria

**Options :**

19088913349. 1

19088913350. 2

19088913351. 3

19088913352. 4

**Question Number : 64 Question Id : 1908893362 Question Type : MCQ Option Shuffling : No Is Question Mandatory : No**

**Correct Marks : 4 Wrong Marks : 1**

Creaming in emulsions is governed by

- |                     |                  |
|---------------------|------------------|
| (1) Gay-Lussacs law | (2) Newton's law |
| (3) Stoke's law     | (4) Charles' law |

**Options :**

19088913353. 1

19088913354. 2

19088913355. 3

19088913356. 4

**Question Number : 65 Question Id : 1908893363 Question Type : MCQ Option Shuffling : No Is Question Mandatory : No**

**Correct Marks : 4 Wrong Marks : 1**

BCG vaccine contains

- (1) A live-attenuated strain derived from *M. bovis*
- (2) A live-attenuated strain derived from *M. Africanum*
- (3) A live-attenuated strain derived from *M. tuberculosis*
- (4) A dead-attenuated strain derived from *M. Africanum*

**Options :**

19088913357. 1

19088913358. 2

19088913359. 3

19088913360. 4

**Question Number : 66 Question Id : 1908893364 Question Type : MCQ Option Shuffling : No Is Question Mandatory : No**

**Correct Marks : 4 Wrong Marks : 1**

Which of the following statement is true about famotidine

- (1) It contains thiazole ring and completely antagonises H<sub>2</sub> receptor
- (2) It contains furan ring and neutralizes gastric acid
- (3) It contains thiazole ring and neutralizes gastric acid
- (4) It contains furan ring and completely antagonises H<sub>2</sub> receptor

**Options :**

19088913361. 1

19088913362. 2

19088913363. 3

19088913364. 4

**Question Number : 67 Question Id : 1908893365 Question Type : MCQ Option Shuffling : No Is Question Mandatory : No**

**Correct Marks : 4 Wrong Marks : 1**

A naturally occurring amino acid which does not have a chiral centre is

- (1) Glycine
- (2) Alanine
- (3) Tryptophan
- (4) Tyrosine

**Options :**

19088913365. 1

19088913366. 2

19088913367. 3

19088913368. 4

**Question Number : 68 Question Id : 1908893366 Question Type : MCQ Option Shuffling : No Is Question Mandatory : No**

**Correct Marks : 4 Wrong Marks : 1**

CONI SNAP is a commercial name of

- (1) Diluent
- (2) Tablet package
- (3) Capsule shell design
- (4) Flavoring agent



**Options :**

19088913369. 1

19088913370. 2

19088913371. 3

19088913372. 4

**Question Number : 69 Question Id : 1908893367 Question Type : MCQ Option Shuffling : No Is Question Mandatory : No**

**Correct Marks : 4 Wrong Marks : 1**

Which of the following is the correct precursor of the colchicine

(1) Dihydrotyrosine

(2) Phenylalanine

(3) Ornithine

(4) Lysine

**Options :**

19088913373. 1

19088913374. 2

19088913375. 3

19088913376. 4

**Question Number : 70 Question Id : 1908893368 Question Type : MCQ Option Shuffling : No Is Question Mandatory : No**

**Correct Marks : 4 Wrong Marks : 1**

Which of the following antihypertensive drug produces its effects by blocking alpha-1 adrenergic receptor?

(1) Minoxidil

(2) Methyldopa

(3) Terazosin

(4) Labetolol

**Options :**

19088913377. 1

19088913378. 2

19088913379. 3

19088913380. 4

**Question Number : 71 Question Id : 1908893369 Question Type : MCQ Option Shuffling : No Is Question Mandatory : No**

**Correct Marks : 4 Wrong Marks : 1**

Minoxidil is related to

- (1) Multiple sites including  $\alpha$ -2 agonist
- (2) Catecholamine release
- (3) Sympathetic neuronal block
- (4) Non-selective vasodilation

**Options :**

19088913381. 1

19088913382. 2

19088913383. 3

19088913384. 4

**Question Number : 72 Question Id : 1908893370 Question Type : MCQ Option Shuffling : No Is Question Mandatory : No**

**Correct Marks : 4 Wrong Marks : 1**

The mechanism of action of digitalis is

- (1) Decreases intracellular sodium concentration
- (2) Inhibits sodium potassium ATPase
- (3) Activates adenylcyclase which produces cAMP
- (4) Decreases release of calcium from sarcoplasmic reticulum

**Options :**

19088913385. 1

19088913386. 2

19088913387. 3

19088913388. 4

**Question Number : 73 Question Id : 1908893371 Question Type : MCQ Option Shuffling : No Is**

**Question Mandatory : No**

**Correct Marks : 4 Wrong Marks : 1**

Mechanism of action of ondansetron is

- |  |  |
|--|--|
| (1) Muscarinic receptor antagonist               | (2) Histamine H <sub>2</sub> receptor antagonist |
| (3) Histamine H <sub>1</sub> receptor antagonist | (4) 5HT <sub>3</sub> receptor antagonist         |

**Options :**

19088913389. 1

19088913390. 2

19088913391. 3

19088913392. 4

**Question Number : 74 Question Id : 1908893372 Question Type : MCQ Option Shuffling : No Is**

**Question Mandatory : No**

**Correct Marks : 4 Wrong Marks : 1**

An organism which has been implicated as a possible cause of chronic gastritis and peptic ulcer is

- |                                 |                             |
|---------------------------------|-----------------------------|
| (1) <i>Campylobacter jejuni</i> | (2) <i>Escherichia coli</i> |
| (3) <i>Helicobacter pylori</i>  | (4) <i>Giardia lamblia</i>  |

**Options :**

19088913393. 1

19088913394. 2

19088913395. 3

19088913396. 4

**Question Number : 75 Question Id : 1908893373 Question Type : MCQ Option Shuffling : No Is**

**Question Mandatory : No**

**Correct Marks : 4 Wrong Marks : 1**

Mechanism of action of lansoprazole which is used for peptic ulcer is

- (1) Histamine H<sub>2</sub> receptor antagonist
- (2) Proton pump inhibitor
- (3) Antacid
- (4) Inhibit gastrin secretion

**Options :**

19088913397. 1

19088913398. 2

19088913399. 3

19088913400. 4

**Question Number : 76 Question Id : 1908893374 Question Type : MCQ Option Shuffling : No Is**

**Question Mandatory : No**

**Correct Marks : 4 Wrong Marks : 1**

Phase-IV clinical trials deal with

- (1) Post marketing survey
- (2) Safety and efficacy
- (3) Micro dosing
- (4) Bioequivalence study

**Options :**

19088913401. 1

19088913402. 2

19088913403. 3

19088913404. 4

**Question Number : 77 Question Id : 1908893375 Question Type : MCQ Option Shuffling : No Is**

**Question Mandatory : No**

**Correct Marks : 4 Wrong Marks : 1**

Which of the following is correct?

- (1) Mottling is partial separation of top or bottom crowns of the tablet from main body
- (2) Mottling is uneven distribution of color on the tablet surface
- (3) Lamination refers to adhering of tablet material to die wall
- (4) Sticking is unequal distribution of color on the tablet surface

**Options :**

19088913405. 1

19088913406. 2

19088913407. 3

19088913408. 4

**Question Number : 78 Question Id : 1908893376 Question Type : MCQ Option Shuffling : No Is**

**Question Mandatory : No**

**Correct Marks : 4 Wrong Marks : 1**

Which of the following functional groups can be found in epinephrine

- (1) Tertiary aliphatic amine
- (2) Phenolic hydroxyl group
- (3) Secondary aliphatic amine
- (4) Tertiary alcoholic hydroxyl group

**Options :**

19088913409. 1

19088913410. 2

19088913411. 3

19088913412. 4

**Question Number : 79 Question Id : 1908893377 Question Type : MCQ Option Shuffling : No Is**

**Question Mandatory : No**

**Correct Marks : 4 Wrong Marks : 1**

Which of the following is directly compressible polymer?

- (1) PVP (2) Avicel  
(3) DI-Tab (4) HPMC

**Options :**

19088913413. 1

19088913414. 2

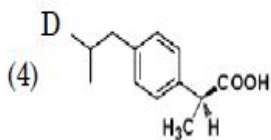
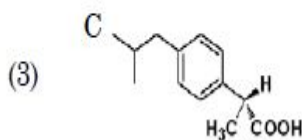
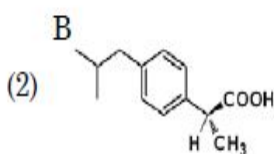
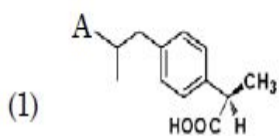
19088913415. 3

19088913416. 4

**Question Number : 80 Question Id : 1908893378 Question Type : MCQ Option Shuffling : No Is Question Mandatory : No**

**Correct Marks : 4 Wrong Marks : 1**

The S enantiomer of ibuprofen is responsible for its pain-relieving properties. Which one of the structures shown is (S)-ibuprofen?



**Options :**

19088913417. 1

19088913418. 2

19088913419. 3

19088913420. 4

**Question Number : 81 Question Id : 1908893379 Question Type : MCQ Option Shuffling : No Is Question Mandatory : No**

**Correct Marks : 4 Wrong Marks : 1**

Which of the following is used for enteric coating?

- (1) PVP (2) HPMC  
(3) CAP (4) HPC

**Options :**

19088913421. 1  
19088913422. 2  
19088913423. 3  
19088913424. 4

**Question Number : 82 Question Id : 1908893380 Question Type : MCQ Option Shuffling : No Is Question Mandatory : No**

**Correct Marks : 4 Wrong Marks : 1**

Sodium nitroprusside is one of the most potent blood pressure lowering drugs. Its use is limited because of

- (1) Its short duration of action (2) Very long duration of action  
(3) Ineffective orally (4) None of these

**Options :**

19088913425. 1  
19088913426. 2  
19088913427. 3  
19088913428. 4

**Question Number : 83 Question Id : 1908893381 Question Type : MCQ Option Shuffling : No Is Question Mandatory : No**

**Correct Marks : 4 Wrong Marks : 1**

In a hypertensive patient who is taking insulin to treat diabetes, which of the following drugs is to be used with extra caution and advice to the patient?

- |                  |                 |
|------------------|-----------------|
| (1) Hydralazine  | (2) Prazosin    |
| (3) Guanethidine | (4) Propranolol |

**Options :**

- 19088913429. 1
- 19088913430. 2
- 19088913431. 3
- 19088913432. 4

**Question Number : 84 Question Id : 1908893382 Question Type : MCQ Option Shuffling : No Is Question Mandatory : No**

**Correct Marks : 4 Wrong Marks : 1**

ACE inhibitors are associated with a high incidence of which of the following adverse reactions

- |                     |                 |
|---------------------|-----------------|
| (1) Hepatitis       | (2) Hypokalemia |
| (3) Agranulocytosis | (4) Proteinuria |

**Options :**

- 19088913433. 1
- 19088913434. 2
- 19088913435. 3
- 19088913436. 4

**Question Number : 85 Question Id : 1908893383 Question Type : MCQ Option Shuffling : No Is Question Mandatory : No**

**Correct Marks : 4 Wrong Marks : 1**



The standard used in the determination of fluoride through potentiometry is

- (1) Sodium fluoride (2) Potassium fluoride  
(3) Any fluoride salt (4) None of these

**Options :**

19088913437. 1  
19088913438. 2  
19088913439. 3  
19088913440. 4

**Question Number : 86 Question Id : 1908893384 Question Type : MCQ Option Shuffling : No Is Question Mandatory : No**

**Correct Marks : 4 Wrong Marks : 1**

Which type of the glass is not used for parenteral products

- (1) Type I (2) Type II  
(3) Type III (4) Type IV

**Options :**

19088913441. 1  
19088913442. 2  
19088913443. 3  
19088913444. 4

**Question Number : 87 Question Id : 1908893385 Question Type : MCQ Option Shuffling : No Is Question Mandatory : No**

**Correct Marks : 4 Wrong Marks : 1**

Which Schedule has standard for ophthalmic preparation

- (1) Schedule F1 (2) Schedule F2  
(3) Schedule F3 (4) Schedule FF

**Options :**

19088913445. 1

19088913446. 2

19088913447. 3

19088913448. 4

**Question Number : 88 Question Id : 1908893386 Question Type : MCQ Option Shuffling : No Is Question Mandatory : No**

**Correct Marks : 4 Wrong Marks : 1**

Clove contains which type of calcium oxalate crystal

(1) Prism

(2) Acicular

(3) Cluster

(4) Rosette

**Options :**

19088913449. 1

19088913450. 2

19088913451. 3

19088913452. 4

**Question Number : 89 Question Id : 1908893387 Question Type : MCQ Option Shuffling : No Is Question Mandatory : No**

**Correct Marks : 4 Wrong Marks : 1**

Which of the following herbs is considered as valuable 'Nutraceutical'?

(1) Senna

(2) Spirulina

(3) Vasaka

(4) Bael

**Options :**

19088913453. 1

19088913454. 2

19088913455. 3

19088913456. 4

**Question Number : 90 Question Id : 1908893388 Question Type : MCQ Option Shuffling : No Is Question Mandatory : No**

**Correct Marks : 4 Wrong Marks : 1**

The shell of soft gelatin capsules may be made elastic or plastic like by the addition of

- |              |              |
|--------------|--------------|
| (1) Sorbitol | (2) Povidone |
| (3) Lactose  | (4) PEG      |

**Options :**

19088913457. 1

19088913458. 2

19088913459. 3

19088913460. 4

**Question Number : 91 Question Id : 1908893389 Question Type : MCQ Option Shuffling : No Is Question Mandatory : No**

**Correct Marks : 4 Wrong Marks : 1**

The inert gas used in the gas chromatography is

- |                     |                                     |
|---------------------|-------------------------------------|
| (1) Hydrogen        | (2) CO <sub>2</sub> /O <sub>2</sub> |
| (3) Nitrogen/Helium | (4) Sulphur                         |

**Options :**

19088913461. 1

19088913462. 2

19088913463. 3

19088913464. 4

**Question Number : 92 Question Id : 1908893390 Question Type : MCQ Option Shuffling : No Is Question Mandatory : No**

**Correct Marks : 4 Wrong Marks : 1**

Which test animal is used for pyrogen testing?

- (1) Rat (2) Mice  
(3) Rabbit (4) Guinea pig

**Options :**

19088913465. 1

19088913466. 2

19088913467. 3

19088913468. 4

**Question Number : 93 Question Id : 1908893391 Question Type : MCQ Option Shuffling : No Is Question Mandatory : No**

**Correct Marks : 4 Wrong Marks : 1**

LAL test stands for

- (1) Linker allele lyase (2) Limulus amoebocyte lysate  
(3) Lecithin antigen linkage (4) None of these

**Options :**

19088913469. 1

19088913470. 2

19088913471. 3

19088913472. 4

**Question Number : 94 Question Id : 1908893392 Question Type : MCQ Option Shuffling : No Is Question Mandatory : No**

**Correct Marks : 4 Wrong Marks : 1**

Ergot alkaloids are biosynthesized from

- (1) Tryptophan (2) Tryptamine  
(3) Dihydrotyrosin (4) Tyrosin

**Options :**

19088913473. 1

19088913474. 2

19088913475. 3

19088913476. 4

**Question Number : 95 Question Id : 1908893393 Question Type : MCQ Option Shuffling : No Is Question Mandatory : No**

**Correct Marks : 4 Wrong Marks : 1**

A liquid, the viscosity of which increases when stress is applied, is from which class of the following materials?

- (1) Dilatant (2) Newtonian  
(3) Plastic (4) Pseudoplastic

**Options :**

19088913477. 1

19088913478. 2

19088913479. 3

19088913480. 4

**Question Number : 96 Question Id : 1908893394 Question Type : MCQ Option Shuffling : No Is Question Mandatory : No**

**Correct Marks : 4 Wrong Marks : 1**

Angle of repose is a measure of

- |                              |               |
|------------------------------|---------------|
| (1) Surface tension          | (2) Viscosity |
| (3) Flow property of powders | (4) Density   |

**Options :**

19088913481. 1

19088913482. 2

19088913483. 3

19088913484. 4

**Question Number : 97 Question Id : 1908893395 Question Type : MCQ Option Shuffling : No Is Question Mandatory : No**

**Correct Marks : 4 Wrong Marks : 1**

Dextromethorphan is an:

- |                 |                    |
|-----------------|--------------------|
| (1) Analgesic   | (2) Antitussive    |
| (3) Expectorant | (4) Antihistaminic |

**Options :**

19088913485. 1

19088913486. 2

19088913487. 3

19088913488. 4

**Question Number : 98 Question Id : 1908893396 Question Type : MCQ Option Shuffling : No Is Question Mandatory : No**

**Correct Marks : 4 Wrong Marks : 1**

The general anaesthetic having significant cardiodepressant property is:

- |               |                   |
|---------------|-------------------|
| (1) Halothane | (2) Enflurane     |
| (3) Ether     | (4) Nitrous oxide |

**Options :**

19088913489. 1

19088913490. 2

19088913491. 3

19088913492. 4

**Question Number : 99 Question Id : 1908893397 Question Type : MCQ Option Shuffling : No Is Question Mandatory : No**

**Correct Marks : 4 Wrong Marks : 1**

Barbiturates exert the following actions except:

(1) Anticonvulsant

(2) Analgesic

(3) Antianxiety

(4) Respiratory depressant

**Options :**

19088913493. 1

19088913494. 2

19088913495. 3

19088913496. 4

**Question Number : 100 Question Id : 1908893398 Question Type : MCQ Option Shuffling : No Is Question Mandatory : No**

**Correct Marks : 4 Wrong Marks : 1**

The characteristic toxicity of doxorubicin is:

(1) Kidney damage

(2) Liver damage

(3) Cardiomyopathy

(4) Pulmonary fibrosis

**Options :**

19088913497. 1

19088913498. 2

19088913499.3

19088913500.4