

BOTANY

SECTION-A

101. Which hormone promotes internode/petiole elongation in deep water rice?

- (1) GA₃
- (2) Kinetin
- (3) Ethylene
- (4) 2, 4-D

Answer (3)

102. Given below are two statements : One is labelled as **Assertion A** and the other is labelled as **Reason R** :

Assertion A : ATP is used at two steps in glycolysis.

Reason R : First ATP is used in converting glucose into glucose-6-phosphate and second ATP is used in conversion of fructose-6-phosphate into fructose-1, 6-diphosphate.

In the light of the above statements, choose the **correct** answer from the options given below :

- (1) Both **A** and **R** are true and **R** is the correct explanation of **A**.
- (2) Both **A** and **R** are true but **R** is NOT the correct explanation of **A**.
- (3) **A** is true but **R** is false.
- (4) **A** is false but **R** is true.

Answer (1)

103. Given below are two statements : One is labelled as **Assertion A** and the other is labelled as **Reason R** :

Assertion A : Late wood has fewer xylary elements with narrow vessels.

Reason R : Cambium is less active in winters.

In the light of the above statements, choose the **correct** answer from the options given below :

- (1) Both **A** and **R** are true and **R** is the correct explanation of **A**
- (2) Both **A** and **R** are true but **R** is NOT the correct explanation of **A**
- (3) **A** is true but **R** is false
- (4) **A** is false but **R** is true

Answer (1)

104. The reaction centre in PS II has an absorption maxima at

- | | |
|------------|------------|
| (1) 680 nm | (2) 700 nm |
| (3) 660 nm | (4) 780 nm |

Answer (1)

105. Family Fabaceae differs from Solanaceae and Liliaceae. With respect to the stamens, pick out the characteristics specific to family Fabaceae but not found in Solanaceae or Liliaceae.

- (1) Diadelphous and Dithecous anthers
- (2) Polyadelphous and epipetalous stamens
- (3) Monoadelphous and Monothealous anthers
- (4) Epiphylous and Dithecous anthers

Answer (1)

106. Given below are two statements : One labelled as **Assertion A** and the other labelled as **Reason R**:

Assertion A : The first stage of gametophyte in the life cycle of moss is protonema stage.

Reason R : Protonema develops directly from spores produced in capsule.

In the light of the above statements, choose the **most appropriate** answer from options given below:

- (1) Both **A** and **R** are correct and **R** is the correct explanation of **A**
- (2) Both **A** and **R** are correct but **R** is NOT the correct explanation of **A**
- (3) **A** is correct but **R** is not correct
- (4) **A** is not correct but **R** is correct

Answer (1)

107. Axile placentation is observed in

- (1) Mustard, Cucumber and Primrose
- (2) China rose, Beans and Lupin
- (3) Tomato, Dianthus and Pea
- (4) China rose, Petunia and Lemon

Answer (4)

108. In tissue culture experiments, leaf mesophyll cells are put in a culture medium to form callus. This phenomenon may be called as

- (1) Differentiation
- (2) Dedifferentiation
- (3) Development
- (4) Senescence

Answer (2)

109. Frequency of recombination between gene pairs on same chromosome as a measure of the distance between genes to map their position on chromosome, was used for the first time by

- (1) Thomas Hunt Morgan
- (2) Sutton and Boveri
- (3) Alfred Sturtevant
- (4) Henking

Answer (3)

110. Spraying of which of the following phytohormone on juvenile conifers helps in hastening the maturity period, that leads to early seed production?

- (1) Indole-3-butyric Acid
- (2) Gibberellic Acid
- (3) Zeatin
- (4) Abscisic Acid

Answer (2)

111. Large, colourful, fragrant flowers with nectar are seen in

- | | |
|------------------------------|----------------------------|
| (1) Insect pollinated plants | (2) Bird pollinated plants |
| (3) Bat pollinated plants | (4) Wind pollinated plants |

Answer (1)

119. Expressed Sequence Tags (ESTs) refers to
- (1) All genes that are expressed as RNA.
 - (2) All genes that are expressed as proteins.
 - (3) All genes whether expressed or unexpressed.
 - (4) Certain important expressed genes.

Answer (1)

120. Identify the **correct** statements:
- A. Detrivores perform fragmentation.
 - B. The humus is further degraded by some microbes during mineralization.
 - C. Water soluble inorganic nutrients go down into the soil and get precipitated by a process called leaching.
 - D. The detritus food chain begins with living organisms.
 - E. Earthworms break down detritus into smaller particles by a process called catabolism.

Choose the **correct** answer from the options given below:

- (1) A, B, C only
- (2) B, C, D only
- (3) C, D, E only
- (4) D, E, A only

Answer (1)

121. Among 'The Evil Quartet', which one is considered the most important cause driving extinction of species?
- (1) Habitat loss and fragmentation
 - (2) Over exploitation for economic gain
 - (3) Alien species invasions
 - (4) Co-extinctions

Answer (1)

122. The phenomenon of pleiotropism refers to
- (1) Presence of several alleles of a single gene controlling a single crossover
 - (2) Presence of two alleles, each of the two genes controlling a single trait
 - (3) A single gene affecting multiple phenotypic expression
 - (4) More than two genes affecting a single character

Answer (3)

123. Among eukaryotes, replication of DNA takes place in :
- (1) M phase
 - (2) S phase
 - (3) G_1 phase
 - (4) G_2 phase

Answer (2)

124. The process of appearance of recombination nodules occurs at which sub stage of prophase I in meiosis?
- (1) Zygotene
 - (2) Pachytene
 - (3) Diplotene
 - (4) Diakinesis

Answer (2)

125. Upon exposure to UV radiation, DNA stained with ethidium bromide will show
- (1) Bright red colour
 - (2) Bright blue colour
 - (3) Bright yellow colour
 - (4) Bright orange colour

Answer (4)

126. The historic Convention on Biological Diversity, 'The Earth Summit' was held in Rio de Janeiro in the year
- (1) 1985
 - (2) 1992
 - (3) 1986
 - (4) 2002

Answer (2)

127. In the equation $GPP - R = NPP$

GPP is Gross Primary Productivity

NPP is Net Primary Productivity

R here is _____.

- (1) Photosynthetically active radiation
- (2) Respiratory quotient
- (3) Respiratory loss
- (4) Reproductive allocation

Answer (3)

128. Unequivocal proof that DNA is the genetic material was first proposed by

- (1) Frederick Griffith
- (2) Alfred Hershey and Martha Chase
- (3) Avery, Macleoid and McCarthy
- (4) Wilkins and Franklin

Answer (2)

129. The thickness of ozone in a column of air in the atmosphere is measured in terms of :

- (1) Dobson units
- (2) Decibels
- (3) Decameter
- (4) Kilobase

Answer (1)

130. Given below are two statements :

Statement I : Endarch and exarch are the terms often used for describing the position of secondary xylem in the plant body.

Statement II : Exarch condition is the most common feature of the root system.

In the light of the above statements, choose the **correct** answer from the options given below:

- (1) Both **Statement I** and **Statement II** are true
- (2) Both **Statement I** and **Statement II** are false
- (3) **Statement I** is correct but **Statement II** is false
- (4) **Statement I** is incorrect but **Statement II** is true

Answer (4)

131. Movement and accumulation of ions across a membrane against their concentration gradient can be explained by

- (1) Osmosis
- (2) Facilitated Diffusion
- (3) Passive Transport
- (4) Active Transport

Answer (4)

132. Given below are two statements :

Statement I : The forces generated transpiration can lift a xylem-sized column of water over 130 meters height.

Statement II : Transpiration cools leaf surfaces sometimes 10 to 15 degrees evaporative cooling.

In the light of the above statements, choose the **most appropriate** answer from the options given below :

- (1) Both **Statement I** and **Statement II** are correct
- (2) Both **Statement I** and **Statement II** are incorrect
- (3) **Statement I** is correct but **Statement II** is incorrect
- (4) **Statement I** is incorrect but **Statement II** is correct

Answer (1)

133. In gene gun method used to introduce alien DNA into host cells, microparticles of _____ metal are used.

- | | |
|----------------------|------------|
| (1) Copper | (2) Zinc |
| (3) Tungsten or gold | (4) Silver |

Answer (3)

134. In angiosperm, the haploid, diploid and triploid structures of a fertilized embryo sac sequentially are :

- (1) Synergids, Primary endosperm nucleus and zygote
- (2) Antipodals, synergids, and primary endosperm nucleus
- (3) Synergids, Zygote and Primary endosperm nucleus
- (4) Synergids, antipodals and Polar nuclei

Answer (3)

135. What is the function of tassels in the corn cob?

- | | |
|-------------------------------|---------------------------|
| (1) To attract insects | (2) To trap pollen grains |
| (3) To disperse pollen grains | (4) To protect seeds |

Answer (2)

SECTION-B

 136. Match **List I** with **List II**:

List I	List II
A. Iron	I. Synthesis of auxin
B. Zinc	II. Component of nitrate reductase
C. Boron	III. Activator of catalase
D. Molybdenum	IV. Cell elongation and differentiation

Choose the correct answer from the options given below:

- | | |
|----------------------------|----------------------------|
| (1) A-III, B-II, C-I, D-IV | (2) A-II, B-III, C-IV, D-I |
| (3) A-III, B-I, C-IV, D-II | (4) A-II, B-IV, C-I, D-III |

Answer (3)

 137. Which one of the following statements is **NOT** correct?

- (1) The micro-organisms involved in biodegradation of organic matter in a sewage polluted water body consume a lot of oxygen causing the death of aquatic organisms
- (2) Algal blooms caused by excess of organic matter in water improve water quality and promote fisheries
- (3) Water hyacinth grows abundantly in eutrophic water bodies and leads to an imbalance in the ecosystem dynamics of the water body
- (4) The amount of some toxic substances of industrial waste water increases in the organisms at successive trophic levels

Answer (2)

 138. Match **List I** with **List II** :

List I (Interaction)	List II (Species A and B)
A. Mutualism	I. $+(A), 0(B)$
B. Commensalism	II. $-(A), 0(B)$
C. Amensalism	III. $+(A), -(B)$
D. Parasitism	IV. $+(A), +(B)$

 Choose the **correct** answer from the options given below:

- | | |
|----------------------------|----------------------------|
| (1) A-IV, B-II, C-I, D-III | (2) A-IV, B-I, C-II, D-III |
| (3) A-IV, B-III, C-I, D-II | (4) A-III, B-I, C-IV, D-II |

Answer (2)

 139. Given below are two statements : One labelled as **Assertion A** and the other labelled as **Reason R** :

Assertion A : In gymnosperms the pollen grains are released from the microsporangium and carried by air currents.

Reason R : Air currents carry the pollen grains to the mouth of the archegonia where the male gametes are discharged and pollen tube is not formed.

 In the light of the above statements, choose the **correct** answer from the options given below :

- (1) Both **A** and **R** are true and **R** is the correct explanation of **A**
- (2) Both **A** and **R** are true but **R** is NOT the current explanation of **A**
- (3) **A** is true but **R** is false
- (4) **A** is false but **R** is true

Answer (3)

140. Match **List I** with **List II** :

List I	List II
A. Oxidative decarboxylation	I. Citrate synthase
B. Glycolysis	II. Pyruvate dehydrogenase
C. Oxidative phosphorylation	III. Electron transport system
D. Tricarboxylic acid cycle	IV. EMP pathway

Choose the correct answer from the options given below :

- (1) A-III, B-IV, C-II, D-I
- (2) A-II, B-IV, C-I, D-III
- (3) A-III, B-I, C-II, D-IV
- (4) A-II, B-IV, C-III, D-I

Answer (4)

141. Identify the **correct** statements:

- A. Lenticels are the lens-shaped openings permitting the exchange of gases.
- B. Bark formed early in the season is called hard bark.
- C. Bark is a technical term that refers to all tissues exterior to vascular cambium.
- D. Bark refers to periderm and secondary phloem.
- E. Phellogen is single-layered in thickness.

Choose the correct answer from the options given below:

- (1) B, C and E only
- (2) A and D only
- (3) A, B and D only
- (4) B and C only

Answer (2)

142. Main steps in the formation of Recombinant DNA are given below. Arrange these steps in a correct sequence.

- A Insertion of recombinant DNA into the host cell
- B Cutting of DNA at specific location by restriction enzyme
- C Isolation of desired DNA fragment
- D Amplification of gene of interest using PCR

Choose the correct answer from the options given below :

- (1) B, C, D, A
- (2) C, A, B, D
- (3) C, B, D, A
- (4) B, D, A, C

Answer (1)

143. Match **List I** with **List II** :

List I	List II
A. Cohesion	I. More attraction in liquid phase
B. Adhesion	II. Mutual attraction among water molecules
C. Surface tension	III. Water loss in liquid phase
D. Guttation	IV. Attraction towards polar surfaces

Choose the **correct** answer from the options given below :

- (1) A – II, B – IV, C – I, D – III
 (2) A – IV, B – III, C – II, D – I
 (3) A – III, B – I, C – IV, D – II
 (4) A – II, B – I, C – IV, D – III

Answer (1)

144. Which of the following statements are correct about Klinefelter's Syndrome?

- A. This disorder was first described by Langdon Down (1866).
 B. Such an individual has overall masculine development. However, the feminine development is also expressed.
 C. The affected individual is short statured.
 D. Physical, psychomotor and mental development is retarded.
 E. Such individuals are sterile.

Choose the **correct** answer from the options given below:

- (1) A and B only
 (2) C and D only
 (3) B and E only
 (4) A and E only

Answer (3)

145. How many different proteins does the ribosome consist of?

- (1) 80
 (2) 60
 (3) 40
 (4) 20

Answer (1)

146. Match **List I** with **List II** :

List I	List II
A. M Phase	I. Proteins are synthesized
B. G ₂ Phase	II. Inactive phase
C. Quiescent stage	III. Interval between mitosis and initiation of DNA replication
D. G ₁ Phase	IV. Equational division

Choose the correct answer from the options given below :

- (1) A-III, B-II, C-IV, D-I
 (2) A-IV, B-II, C-I, D-III
 (3) A-IV, B-I, C-II, D-III
 (4) A-II, B-IV, C-I, D-III

Answer (3)

147. Which of the following combinations is required for chemiosmosis?

- (1) Membrane, proton pump, proton gradient, ATP synthase
- (2) Membrane, proton pump, proton gradient, NADP synthase
- (3) Proton pump, electron gradient, ATP synthase
- (4) Proton pump, electron gradient, NADP synthase

Answer (1)

148. Melonate inhibits the growth of pathogenic bacteria by inhibiting the activity of

- (1) Succinic dehydrogenase
- (2) Amylase
- (3) Lipase
- (4) Dinitrogenase

Answer (1)

149. Given below are two statements : One is labelled as **Assertion A** and the other is labelled as **Reason R** :

Assertion A : A flower is defined as modified shoot wherein the shoot apical meristem changes to floral meristem.

Reason R : Internode of the shoot gets condensed to produce different floral appendages laterally at successive node instead of leaves.

In the light of the above statements, choose the **correct** answer from the options given below :

- (1) Both **A** and **R** are true and **R** is the correct explanation of **A**
- (2) Both **A** and **R** are true but **R** is NOT the correct explanation of **A**
- (3) **A** is true but **R** is false
- (4) **A** is false but **R** is true

Answer (1)

150. Given below are two statements:

Statement I : Gause's 'Competitive Exclusion Principle' states that two closely related species competing for the same resources cannot co-exist indefinitely and competitively inferior one will be eliminated eventually.

Statement II : In general, carnivores are more adversely affected by competition than herbivores.

In the light of the above statements, choose the **correct** answer from the options given below:

- (1) Both **Statement I** and **Statement II** are true.
- (2) Both **Statement I** and **Statement II** are false.
- (3) **Statement I** is correct **Statement II** is false.
- (4) **Statement I** is incorrect but **Statement II** is true.

Answer (3)

ZOOLOGY

SECTION-A

151. Given below are two statements:

Statement I: Ligaments are dense irregular tissue.

Statement II: Cartilage is dense regular tissue.

In the light of the above statements, choose the **correct** answer from the options given below:

- (1) Both **Statement I** and **Statement II** are true (2) Both **Statement I** and **Statement II** are false
 (3) **Statement I** is true but **Statement II** is false (4) **Statement I** is false but **Statement II** is true

Answer (2)

152. Match **List I** with **List II** with respect to human eye.

List I

- A. Fovea
 B. Iris
 C. Blind spot
 D. Sclera

List II

- I. Visible coloured portion of eye that regulates diameter of pupil.
 II. External layer of eye formed of dense connective tissue.
 III. Point of greatest visual acuity or resolution.
 IV. Point where optic nerve leaves the eyeball and photoreceptor cells are absent.

Choose the **correct** answer from the options given below:

- (1) A-III, B-I, C-IV, D-II (2) A-IV, B-III, C-II, D-I
 (3) A-I, B-IV, C-III, D-II (4) A-II, B-I, C-III, D-IV

Answer (1)

153. In which blood corpuscles, the HIV undergoes replication and produces progeny viruses?

- (1) T_H cells (2) B-lymphocytes
 (3) Basophils (4) Eosinophils

Answer (1)

154. Match **List I** with **List II**.

List I

- A. Heroin
 B. Marijuana
 C. Cocaine
 D. Morphine

List II

- I. Effect on cardiovascular system
 II. Slow down body function
 III. Painkiller
 IV. Interfere with transport of dopamine

Choose the **correct** answer from the options given below:

- (1) A-II, B-I, C-IV, D-III (2) A-I, B-II, C-III, D-IV
 (3) A-IV, B-III, C-II, D-I (4) A-III, B-IV, C-I, D-II

Answer (1)

155. Match List I with List II.

List I	List II
A. Gene 'a'	I. β -galactosidase
B. Gene 'y'	II. Transacetylase
C. Gene 'i'	III. Permease
D. Gene 'z'	IV. Repressor protein

Choose the **correct** answer from the options given below:

- | | |
|----------------------------|----------------------------|
| (1) A-II, B-I, C-IV, D-III | (2) A-II, B-III, C-IV, D-I |
| (3) A-III, B-IV, C-I, D-II | (4) A-III, B-I, C-IV, D-II |

Answer (2)

156. Match List I with List II.

List I (Type of Joint)	List II (Found between)
A. Cartilaginous Joint	I. Between flat skull bones
B. Ball and Socket Joint	II. Between adjacent vertebrae in vertebral column
C. Fibrous Joint	III. Between carpal and metacarpal of thumb
D. Saddle Joint	IV. Between Humerus and Pectoral girdle

Choose the **correct** answer from the options given below:

- | | |
|----------------------------|----------------------------|
| (1) A-III, B-I, C-II, D-IV | (2) A-II, B-IV, C-I, D-III |
| (3) A-I, B-IV, C-III, D-II | (4) A-II, B-IV, C-III, D-I |

Answer (2)

157. Which of the following statements is correct?

- (1) Eutrophication refers to increase in domestic sewage and waste water in lakes.
- (2) Biomagnification refers to increase in concentration of the toxicant at successive trophic levels.
- (3) Presence of large amount of nutrients in water restricts 'Algal Bloom'
- (4) Algal Bloom decreases fish mortality

Answer (2)

158. Given below are two statements: one is labelled as **Assertion A** and other is labelled as **Reason R**.

Assertion A : Amniocentesis for sex determination is one of the strategies of Reproductive and Child Health Care Programme.

Reason R : Ban on amniocentesis checks increasing menace of female foeticide.

In the light of the above statements, choose the **correct** answer from the options given below.

- (1) Both **A** and **R** are true and **R** is the correct explanation of **A**.
- (2) Both **A** and **R** are true and **R** is NOT the correct explanation of **A**.
- (3) **A** is true but **R** is false.
- (4) **A** is false but **R** is true.

Answer (4)

159. Match List I with List II

List I (Cells)	List II (Secretion)
A. Peptic cells	I. Mucus
B. Goblet cells	II. Bile juice
C. Oxyntic cells	III. Proenzyme pepsinogen
D. Hepatic cells	IV. HCl and intrinsic factor for absorption of vitamin B ₁₂

 Choose the **correct** answer from the options given below:

- | | |
|----------------------------|----------------------------|
| (1) A-IV, B-III, C-II, D-I | (2) A-II, B-I, C-III, D-IV |
| (3) A-III, B-I, C-IV, D-II | (4) A-II, B-IV, C-I, D-III |

Answer (3)

160. Select the correct group/set of Australian Marsupials exhibiting adaptive radiation.

- | | |
|--|--|
| (1) Tasmanian wolf, Bobcat, Marsupial mole | (2) Numbat, Spotted cuscus, Flying phalanger |
| (3) Mole, Flying squirrel, Tasmanian tiger cat | (4) Lemur, Anteater, Wolf |

Answer (2)

161. Match List I with List II.

List I	List II
A. Vasectomy	I. Oral method
B. Coitus interruptus	II. Barrier method
C. Cervical caps	III. Surgical method
D. Saheli	IV. Natural method

 Choose the **correct** answer from the options given below:

- (1) A-III, B-I, C-IV, D-II
- (2) A-III, B-IV, C-II, D-I
- (3) A-II, B-III, C-I, D-IV
- (4) A-IV, B-II, C-I, D-III

Answer (2)

162. Given below are two statements:

Statement I: RNA mutates at a faster rate.

Statement II: Viruses having RNA genome and shorter life span mutate and evolve faster.

 In the light of the above statements, choose the **correct** answer from the options given below:

- (1) Both **Statement I** and **Statement II** are true.
- (2) Both **Statement I** and **Statement II** are false.
- (3) **Statement I** is true but **Statement II** is false.
- (4) **Statement I** is false but **Statement II** is true.

Answer (1)

163. Which of the following functions is carried out by cytoskeleton in a cell?
- (1) Nuclear division (2) Protein synthesis
(3) Motility (4) Transportation

Answer (3)

164. Vital capacity of lung is _____.
- (1) IRV + ERV (2) IRV + ERV + TV + RV
(3) IRV + ERV + TV – RV (4) IRV + ERV + TV

Answer (4)

165. Which of the following statements are correct regarding female reproductive cycle?
- A. In non-primate mammals cyclical changes during reproduction are called oestrus cycle.
B. First menstrual cycle begins at puberty and is called menopause.
C. Lack of menstruation may be indicative of pregnancy.
D. Cyclic menstruation extends between menarche and menopause.

Choose the **most appropriate** answer from the options given below.

- (1) A and D only (2) A and B only
(3) A, B and C only (4) A, C and D only

Answer (4)

166. Given below are two statements:

Statement I: Vas deferens receives a duct from seminal vesicle and opens into urethra as the ejaculatory duct.

Statement II: The cavity of the cervix is called cervical canal which along with vagina forms birth canal.

In the light of the above statements, choose the correct answer from the options given below:

- (1) Both **Statement I** and **Statement II** are true.
(2) Both **Statement I** and **Statement II** are false.
(3) **Statement I** is correct but **Statement II** is false.
(4) **Statement I** is incorrect but **Statement II** is true.

Answer (1)

167. Given below are two statements:

Statement I: Electrostatic precipitator is most widely used in thermal power plant.

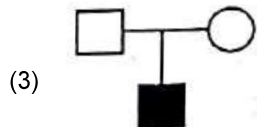
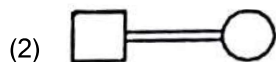
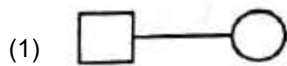
Statement II: Electrostatic precipitator in thermal power plant removes ionising radiations

In the light of the above statements, choose the **most appropriate** answer from the options given below:

- (1) Both **Statement I** and **Statement II** are correct.
(2) Both **Statement I** and **Statement II** are incorrect.
(3) **Statement I** is correct but **Statement II** is incorrect.
(4) **Statement I** is incorrect but **Statement II** is correct.

Answer (3)

168. Which one of the following symbols represents mating between relatives in human pedigree analysis?



Answer (2)

169. Match List I with List II.

List I

A. P-wave

B. Q-wave

C. QRS complex

D. T-wave

List II

I. Beginning of systole

II. Repolarisation of ventricles

III. Depolarisation of atria

IV. Depolarisation of ventricles

Choose the **correct** answer from the options given below :

(1) A-III, B-I, C-IV, D-II

(2) A-IV, B-III, C-II, D-I

(3) A-II, B-IV, C-I, D-III

(4) A-I, B-II, C-III, D-IV

Answer (1)

170. Match List I with List II.

List I

A. *Taenia*

B. *Paramecium*

C. *Periplaneta*

D. *Pheretima*

List II

I. Nephridia

II. Contractile vacuole

III. Flame cells

IV. Urecose gland

Choose the **correct** answer from the options given below:

(1) A-I, B-II, C-III, D-IV

(2) A-I, B-II, C-IV, D-III

(3) A-III, B-II, C-IV, D-I

(4) A-II, B-I, C-IV, D-III

Answer (3)

171. Which one of the following common sexually transmitted diseases is completely curable when detected early and treated properly?

(1) Genital herpes

(2) Gonorrhoea

(3) Hepatitis-B

(4) HIV Infection

Answer (2)

176. Which one of the following techniques does not serve the purpose of early diagnosis of a disease for its early treatment?
- (1) Recombinant DNA Technology
 - (2) Serum and Urine analysis
 - (3) Polymerase Chain Reaction (PCR) technique
 - (4) Enzyme Linked Immuno-Sorbent Assay (ELISA) technique

Answer (2)

177. Once the undigested and unabsorbed substances enter the caecum, their backflow is prevented by
- (1) Sphincter of Oddi
 - (2) Ileo-caecal valve
 - (3) Gastro-oesophageal sphincter
 - (4) Pyloric sphincter

Answer (2)

178. Which of the following are NOT considered as the part of endomembrane system?

- A. Mitochondria
- B. Endoplasmic reticulum
- C. Chloroplasts
- D. Golgi complex
- E. Peroxisomes

Choose the **most appropriate** answer from the options given below:

- (1) B and D only
- (2) A, C and E only
- (3) A and D only
- (4) A, D and E only

Answer (2)

179. Broad palm with single palm crease is visible in a person suffering from-
- (1) Down's syndrome
 - (2) Turner's syndrome
 - (3) Klinefelter's syndrome
 - (4) Thalassemia

Answer (1)

180. Given below are two statements: one is labelled as **Assertion A** and the other is labelled as **Reason R**.

Assertion A: Nephrons are of two types: Cortical & Juxta medullary, based on their relative position in cortex and medulla.

Reason R: Juxta medullary nephrons have short loop of Henle whereas, cortical nephrons have longer loop of Henle.

In the light of the above statements, choose the **correct** answer from the options given below:

- (1) Both **A** and **R** are true and **R** is the correct explanation of **A**.
- (2) Both **A** and **R** are true but **R** is NOT the correct explanation of **A**.
- (3) **A** is true but **R** is false.
- (4) **A** is false but **R** is true.

Answer (3)

181. Match List I with List II.

List I	List II
A. Ringworm	I. <i>Haemophilus influenzae</i>
B. Filariasis	II. <i>Trichophyton</i>
C. Malaria	III. <i>Wuchereria bancrofti</i>
D. Pneumonia	IV. <i>Plasmodium vivax</i>

Choose the **correct** answer from the options given below:

- | | |
|----------------------------|----------------------------|
| (1) A-II, B-III, C-IV, D-I | (2) A-II, B-III, C-I, D-IV |
| (3) A-III, B-II, C-I, D-IV | (4) A-III, B-II, C-IV, D-I |

Answer (1)

182. Which of the following is not a cloning vector?

- | | |
|------------|-----------|
| (1) BAC | (2) YAC |
| (3) pBR322 | (4) Probe |

Answer (4)

183. Given below are two statements: one is labelled as **Assertion A** and the other is labelled as **Reason R**.

Assertion A: Endometrium is necessary for implantation of blastocyst.

Reason R: In the absence of fertilization, the corpus luteum degenerates that causes disintegration of endometrium.

In the light of the above statements, choose the **correct** answer from the options given below:

- (1) Both **A** and **R** are true and **R** is the correct explanation of **A**.
- (2) Both **A** and **R** are true but **R** is NOT the correct explanation of **A**.
- (3) **A** is true but **R** is false.
- (4) **A** is false but **R** is true.

Answer (2)

184. Given below are two statements:

Statement I: In prokaryotes, the positively charged DNA is held with some negatively charged proteins in a region called nucleoid.

Statement II: In eukaryotes, the negatively charged DNA is wrapped around the positively charged histone octamer to form nucleosome.

In the light of the above statements, choose the **correct** answer from the options given below:

- | | |
|---|--|
| (1) Both Statement I and Statement II are true. | (2) Both Statement I and Statement II are false. |
| (3) Statement I is correct but Statement II is false. | (4) Statement I is incorrect but Statement II is true. |

Answer (4)

185. Match **List I** with **List II**.

List I (Interacting species)	List II (Name of interaction)
A. A Leopard and a Lion in a forest/grassland	I. Competition
B. A Cuckoo laying egg in a Crow's nest	II. Brood parasitism
C. Fungi and root of a higher plant in Mycorrhizae	III. Mutualism
D. A cattle egret and a Cattle in a field	IV. Commensalism

Choose the **correct** answer from the options given below.

- | | |
|----------------------------|----------------------------|
| (1) A-I, B-II, C-III, D-IV | (2) A-I, B-II, C-IV, D-III |
| (3) A-III, B-IV, C-I, D-II | (4) A-II, B-III, C-I, D-IV |

Answer (1)

SECTION-B

186. Which of the following are NOT under the control of thyroid hormone?

- A. Maintenance of water and electrolyte balance
- B. Regulation of basal metabolic rate
- C. Normal rhythm of sleep-wake cycle
- D. Development of immune system
- E. Support the process of RBCs formation

Choose the **correct** answer from the options given below:

- (1) A and D only
- (2) B and C only
- (3) C and D only
- (4) D and E only

Answer (3)

187. In cockroach, excretion is brought about by-

- A. Phallic gland
- B. Urecose gland
- C. Nephrocytes
- D. Fat body
- E. Collateral glands

Choose the correct answer from the options given below :

- (1) A and E only
- (2) A, B and E only
- (3) B, C and D only
- (4) B and D only

Answer (3)

188. Match **List I** with **List II**.

List I

- A. Mast cells
- B. Inner surface of bronchiole
- C. Blood
- D. Tubular parts of nephron

List II

- I. Ciliated epithelium
- II. Areolar connective tissue
- III. Cuboidal epithelium
- IV. Specialised connective tissue

Choose the **correct** answer from the options give below:

- (1) A-I, B-II, C-IV, D-III
- (2) A-II, B-III, C-I, D-IV
- (3) A-II, B-I, C-IV, D-III
- (4) A-III, B-IV, C-II, D-I

Answer (3)

189. The unique mammalian characteristics are:

- (1) hairs, tympanic membrane and mammary glands
- (2) hairs, pinna and mammary glands
- (3) hairs, pinna and indirect development
- (4) pinna, monocondylic skull and mammary glands

Answer (2)

190. Select the correct statements with reference to chordates.

- A. Presence of a mid-dorsal, solid and double nerve cord.
- B. Presence of closed circulatory system.
- C. Presence of paired pharyngeal gill slits.
- D. Presence of dorsal heart
- E. Triploblastic pseudocoelomate animals.

Choose the **correct** answer from the options given below:

- (1) A, C and D only
- (2) B and C only
- (3) B, D and E only
- (4) C, D and E only

Answer (2)

191. Select the correct statements.

- A. Tetrad formation is seen during Leptotene.
- B. During Anaphase, the centromeres split and chromatids separate.
- C. Terminalization takes place during Pachytene.
- D. Nucleolus, Golgi complex and ER are reformed during Telophase.
- E. Crossing over takes place between sister chromatids of homologous chromosome.

Choose the **correct** answer from the options given below:

- (1) A and C only
- (2) B and D only
- (3) A, C and E only
- (4) B and E only

Answer (2)

192. The parts of human brain that helps in regulation of sexual behaviour, expression of excitement, pleasure, rage, fear etc. are:
- (1) Limbic system and hypothalamus
 - (2) Corpora quadrigemina and hippocampus
 - (3) Brain stem and epithalamus
 - (4) Corpus callosum and thalamus

Answer (1)

193. Given below are two statements:

Statement I : During G_0 phase of cell cycle, the cell is metabolically inactive.

Statement II : The centrosome undergoes duplication during S phase of interphase.

In the light of the above statements, choose the **most appropriate** answer from the options given below:

- (1) Both **Statement I** and **Statement II** are correct
- (2) Both **Statement I** and **Statement II** are incorrect.
- (3) **Statement I** is correct but **Statement II** is incorrect.
- (4) **Statement I** is incorrect but **Statement II** is correct.

Answer (4)

194. Which one of the following is the sequence on corresponding coding strand, if the sequence on mRNA formed is as follows 5'AUCGAUCGAUCGAUCGAUCG AUCG 3'?

- (1) 5' UAGCUAGCUAGCUAGCUAGCUAGCUAGC 3'
- (2) 3' UAGCUAGCUAGCUAGCUAGCUAGCUAGC 5'
- (3) 5' ATCGATCGATCGATCGATCGATCGATCG 3'
- (4) 3' ATCGATCGATCGATCGATCGATCGATCG 5'

Answer (3)

195. Which of the following statements are correct regarding skeletal muscle?

- A. Muscle bundles are held together by collagenous connective tissue layer called fascicle.
- B. Sarcoplasmic reticulum of muscle fibre is a store house of calcium ions.
- C. Striated appearance of skeletal muscle fibre is due to distribution pattern of actin and myosin proteins.
- D. M line is considered as functional unit of contraction called sarcomere.

Choose the **most appropriate** answer from the options given below:

- (1) A, B and C only
- (2) B and C only
- (3) A, C and D only
- (4) C and D only

Answer (2)

196. Match **List I** with **List II**.

- List I**
- A. Logistic growth
 - B. Exponential growth
 - C. Expanding age pyramid
 - D. Stable age pyramid

- List II**
- I. Unlimited resource availability condition
 - II. Limited resource availability condition
 - III. The percent individuals of pre-reproductive age is largest followed by reproductive and post reproductive age groups
 - IV. The percent individuals of pre-reproductives and reproductive age group are same

Choose the **correct** answer from the options given below:

- (1) A-II, B-I, C-III, D-IV
- (2) A-II, B-III, C-I, D-IV
- (3) A-II, B-IV, C-I, D-III
- (4) A-II, B-IV, C-III, D-I

Answer (1)

197. Which one of the following is NOT an advantage of inbreeding?
- (1) It decreases homozygosity.
 - (2) It exposes harmful recessive genes but are eliminated by selection.
 - (3) Elimination of less desirable genes and accumulation of superior genes takes place due to it.
 - (4) It decreases the productivity of inbred population, after continuous inbreeding.

Answer (4)

198. Which of the following is characteristic feature of cockroach regarding sexual dimorphism?
- (1) Dark brown body colour and anal cerci
 - (2) Presence of anal styles
 - (3) Presence of sclerites
 - (4) Presence of anal cerci

Answer (2)

199. Which of the following statements are correct?

- A. Basophils are most abundant cells of the total WBCs
- B. Basophils secrete histamine, serotonin and heparin
- C. Basophils are involved in inflammatory response
- D. Basophils have kidney shaped nucleus
- E. Basophils are agranulocytes

Choose the **correct** answer from the options given below:

- (1) D and E only
- (2) C and E only
- (3) B and C only
- (4) A and B only

Answer (3)

200. Which of the following statements are correct?

- A. An excessive loss of body fluid from the body switches off osmoreceptors.
- B. ADH facilitates water reabsorption to prevent diuresis.
- C. ANF causes vasodilation.
- D. ADH causes increase in blood pressure.
- E. ADH is responsible for decrease in GFR.

Choose the **correct** answer from the options given below:

- | | |
|---------------------|---------------------|
| (1) A and B only | (2) B, C and D only |
| (3) A, B and E only | (4) C, D and E only |

Answer (2)

