

# **BLUE PRINT FOR MODEL PAPER**

**Subject :** GENERAL SCIENCE (Paper - II)

**Max. Marks :** 50

**Time :** 2 hrs.45min

**TABLE 1**

## **WEIGHTAGE FOR ACADEMIC STANDARDS**

<b>SL.NO.</b>	<b>ACADEMIC STANDARD</b>	<b>WEIGHTAGE</b>	<b>MARKS</b>
1	AS1	40%	20
2	AS2	10%	05
3	AS3	15%	7/8
4	AS4	15%	7/8
5	AS5	10%	05
6	AS6	10%	05
		100%	50

**TABLE 2**

## **TYPE OF QUESTIONS**

<b>SL.NO.</b>	<b>TYPE OF QUESTION</b>	<b>MARKS</b>	<b>QUESTION NO.s</b>	<b>TOTAL MARKS</b>
1	VERY VERY SHORT	1/2	1 - 12	06
2	VERY SHORT	1	13 - 20	08
3	SHORT	2	21 - 28	16
4	ESSAY	4	29 - 33	20
TOTAL			33	50

**20E**

**MODEL PAPER FOR**  
**SSC PUBLIC EXAMINATIONS - 2022**  
**GENERAL SCIENCE : PAPER - II (English Version)**

Class : X

Max.Marks : 50

Time : 2.45 Hrs

**Instructions :**

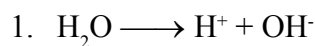
1. First 15 minutes are allotted for reading the question paper and remaining 2:30 minutes are for writing answers.
2. Answer all the questions in the given booklet.
3. The question paper consists of four sections and 33 questions.
4. Section four has internal choice.

**SECTION - I**

**12 × ½ = 6 M**

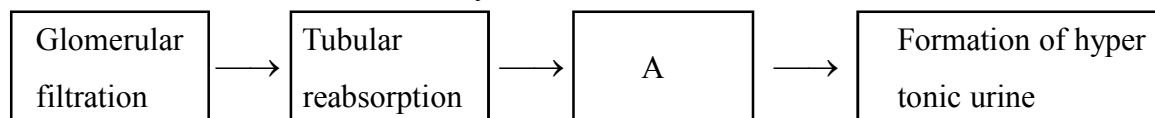
**Note:**

1. Answer all the questions.
2. Each question carries ½ mark



Which phase of photosynthesis, does the above equation indicate ?

2. What are the specialized roots in mangroves ?
3. What is the use of Sphygmomanometer ?
4. Expand the term “ESRD”.
5. Pericardial membrane : Heart : : Meninges : .....
6. The process of evaporation of water through the leaves is called .....
7. Observe the flow chart and identify ‘A’



8. Choose the wrong pair from the following.

Root - Hydrotropism

Tendrils - Geotropism

Pollentube - Chemotropism

9.  What does this logo represent?

10. *Grass* → *Grass hopper* → *Frog* → *Snake* → *Hawk*

Identify the primary consumer in the above food chain.

11. Give an example for homologous organs.

12. Which of the following is a permanent contraceptive method in females ?

- A) Vasectomy    B) Copper - T    C) Pills    D) Tubectomy

**SECTION - II**

**8 × 1 = 8 M**

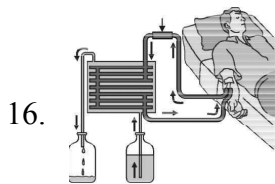
**Note:**

1. Answer all the questions.
2. Each question carries 1 mark.

13. Name the materials used in your laboratory to observe the sporangium in rhizopus?

14. Why is human being known as the “moving museum” of vestigial organs ?

15. Write any two uses of ‘Latex’ in our daily life ?



16.

Which process does the above picture indicate ?

17. What are the excretory organs in Annelids ?

18. Write the enzymes that act on proteins.

19. Ravi is a 10 year old boy. He is habituated to over eating with out any physical work. Guess and write what problem he will face in future.

20. What is synapse ?

**SECTION - III**

**8 × 2 = 16 M**

**Note:**

1. Answer all the questions.
2. Each question carries 2 marks.

21. Guess and write. What will happen if we remove predators from a food web ?

22. If you have a chance to meet a pulmonologist, what questions do you ask about respiratory diseases ?

23. Fill up the following table with suitable information and mention their traits.

		♂ →	
	gametes	T	t
♀	T		
	t		

**Note :** “TT” pure breed tall plant

“tt” pure breed dwarf plant

24. Read the following table and answer the given questions ?

S.No.	Name of the person	Symptoms
1.	Raju	Delay in blood clotting
2.	Sreenu	Night blindness
3.	Padma	Mouth cracks at corners

i) Who is suffering from the deficiency of Riboflavin?

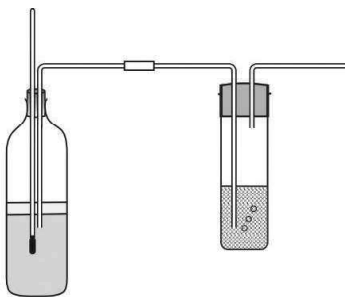
ii) Suggest suitable food materials to Sreenu for the improvement of vision.

25. Write some slogans to create awareness among the people about “Biodiversity”.

26. Give suggestions to prevent AIDS.

27. Write any two functions of cerebrum.

28. **Observe the set of apparatus and answer the following questions ?**



i) What is the aim of this experiment.

ii) Which chemical is used to test the presence of oxygen ?

### **SECTION - IV**

**5 × 4 = 20 M**

#### **Note:**

- 1. Answer all the questions.*
  - 2. Each question has internal choice*
  - 3. Each question carries 4 marks.*
- 

29. Why should we conserve forests and wild life ?

(OR)

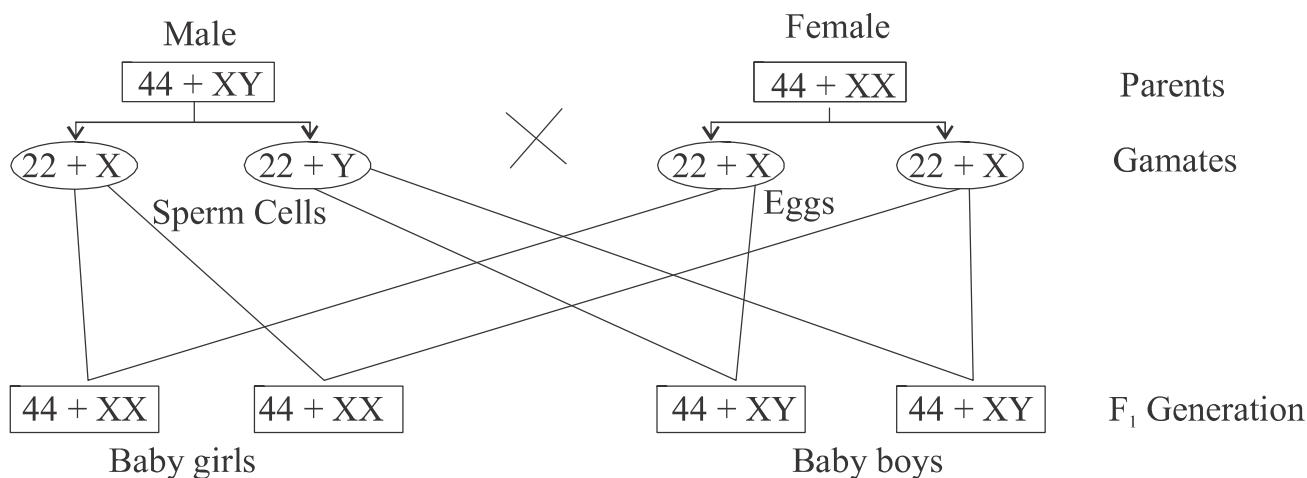
Write the differences between “Arteries and Veins”.

30 Write about some programmes for the prevention of soil pollution by avoiding the use of pesticides.

(OR)

Explain the process of absorption of water by the root hairs through osmosis.

31. Observe the following chart and answer the following questions.



- i) What does the above chart indicate ?
- ii) How many pairs of chromosomes are there in human beings ?
- iii) Which chromosomes are known as sex chromosomes ?
- iv) Who plays an important role in the determination of sex in human beings?

(OR)

Observe the following chart and answer the following questions.

Group - A	Group - B
Auxins	Somatotrophin
Cytokinins	Thyroxine
Gibberellins	Testosterone
Abscisic acid	Adrenaline
Ethylene	Insulin

- i) Which hormone is responsible for the secondary sexual characters in males ?
- ii) Which hormone is responsible for the growth of bones in human beings ?
- iii) Which hormone regulates the closing and opening of stomata ?
- iv) Name any four plant growth substances.

32. How do you prove that carbon dioxide is released during respiration in sprouted seeds?

(OR)

Observe the set of apparatus and answer the following questions.

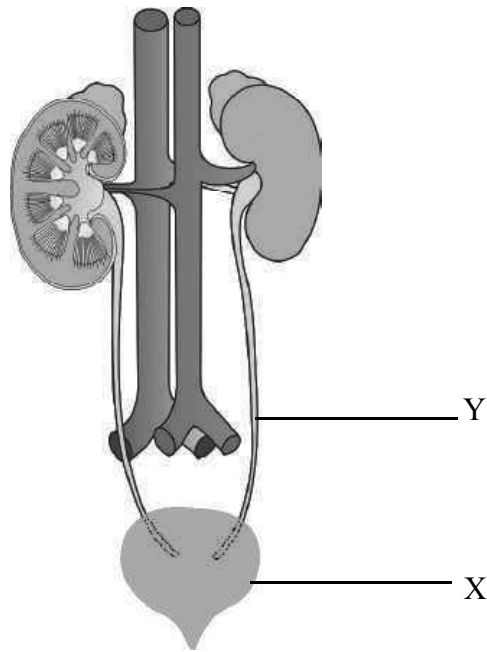
- i) What does this experimental setup indicate ?
- ii) Which chemical is used in the bottle ?
- iii) Which part of the leaf changes its colour at the end of the experiment ?
- iv) What happens if this experiment is conducted in dark ?



33. Draw a neat labelled diagram of longitudinal section of a flower

(OR)

Observe the following diagram and answer the following questions.



- i) To which system, does the above diagram related ?
- ii) Identify the endocrine gland in the picture and name the hormone secreted by that gland.
- iii) Which part in the above system differs in length in males and females ?
- iv) Label the parts 'X' and 'Y'.