



# GATE 2024

## COMPUTER SCIENCE & IT

Exam held on  
**10/02/2024**  
(Afternoon  
Session)

Memory based  
**Questions  
& Solutions**



Corporate Office : 44-A/1, Kalu Sarai, New Delhi - 110016  
MADE EASY Centres : • Delhi • Hyderabad • Bhopal • Jaipur • Pune • Kolkata



9021300500



[www.madeeasy.in](http://www.madeeasy.in)

### SECTION - A

### GENERAL APTITUDE

- Q.1** A person sold two different items at the same price. He made 10% profit in one item and 10% loss in the other item. In, selling the person made a total of  
 (a) 2% loss (b) 2% profit  
 (c) 1% loss (d) 1% profit

**Ans.** (c)

$$\text{If S.P. is same than overall loss} = \frac{x^2}{100} = 1\%$$

End of Solution

- Q.2** The value of  $x$  in given series is  
 6, 9, 14,  $x$ , 30, 41

**Ans.** (21)

$$\begin{aligned} 6 + 3 &= 9 \\ 9 + 5 &= 14 \\ 14 + 7 &= 21 \\ 21 + 9 &= 30 \\ 30 + 11 &= 41 \end{aligned}$$

End of Solution

- Q.3**  $\log\left(\frac{x+y}{2}\right) = \frac{1}{2}(\log x + \log y)$ . The value of  $\frac{x}{y} + \frac{y}{x}$  is

**Ans.** (2)

$$\begin{aligned} \log\left(\frac{x+y}{2}\right) &= \frac{1}{2}(\log x + \log y) \\ \log\left(\frac{x+y}{2}\right) &= \log\sqrt{xy} \\ \frac{x+y}{2} &= \sqrt{xy} \\ x^2 + y^2 + 2xy &= 4xy \\ x^2 + y^2 &= 2xy \\ \frac{x}{y} + \frac{y}{x} &= 2 \end{aligned}$$

End of Solution

**Q.4** The value of  $x$  in given series is  
3, 7,  $x$ , 15

**Ans. (11)**

$$\begin{aligned}3 + 4 &= 7 \\7 + 4 &= 11 \\11 + 4 &= 15\end{aligned}$$

**End of Solution**

**Q.5** A cube is to be cut into 8 pieces of equal size and shape. Here each cut should be straight and it should not stop till it reaches the other end of the cube. The minimum number of such cuts required?

**Ans. (3)**

=

**End of Solution**

**Q.6** Increasing order of the intensity  
Walk → Jog → Sprint  
Bothered → ? → Daunted

- |            |             |
|------------|-------------|
| (a) Fazed  | (b) Phrased |
| (c) Phased | (d) Fused   |

**Ans. (a)**

**End of Solution**

■■■■



*Announcing*

# FOUNDATION COURSE

For **ESE+GATE 2025** • **GATE 2025**

The foundation batches are taught comprehensively which cover the requirements of all technical-syllabus based examinations.

- ✓ Classes by experienced & renowned faculties.
- ✓ Similar teaching pedagogy in offline & online classes.
- ✓ Systematic subject sequence.
- ✓ Efficient teaching with comprehensive coverage.
- ✓ Exam oriented learning ecosystem.
- ✓ Interaction facility for doubt removal.
- ✓ Time bound syllabus completion.
- ✓ Concept of problems solving through workbooks.
- ✓ Comprehensive & updated study material.
- ✓ Regular performance assessment through class tests.

## OFFLINE BATCHES AT DELHI

Commencing from

- **CE** : 15<sup>th</sup> Feb & 26<sup>th</sup> Feb
- **ME** : 15<sup>th</sup> Feb & 29<sup>th</sup> Feb
- **EE, EC & IN** : 15<sup>th</sup> Feb & 29<sup>th</sup> Feb
- **CS** : 15<sup>th</sup> Feb & 5<sup>th</sup> Mar

[www.madeeasy.in](http://www.madeeasy.in) ☎ 9021300500

## LIVE-ONLINE BATCHES

Commencing from

### Evening Batches : Hinglish

- **CE** : 20<sup>th</sup> Feb • **ME** : 20<sup>th</sup> Feb
- **EE/EC/IN** : 20<sup>th</sup> Feb
- **CS** : 20<sup>th</sup> Feb

### Evening Batches

**English** : 20<sup>th</sup> Feb

### Morning Batches

**Hinglish** : 22<sup>nd</sup> Feb  
**Stream** : CE

[www.madeeasyprime.com](http://www.madeeasyprime.com) ☎ 9021300500

Low Cost EMI Facility Available

Admissions open

Delhi Centre : 44-A/1, Kalu Sarai, Near Hauz Khas Metro Station, New Delhi - 110016 | Ph : 9021300500

MADE EASY Centres : Delhi | Bhopal | Hyderabad | Jaipur | Kolkata | Pune

[www.madeeasy.in](http://www.madeeasy.in)

### SECTION - B

### TECHNICAL

#### Algorithms

Q.7  $T(n) = \begin{cases} 5T(n-1) - 6T(n-2) & n \geq 2 \\ 2 & n = 1 \\ 1 & n = 0 \end{cases}$  is equal to

- (a)  $\theta(n \cdot 3^n)$  (b)  $\theta(n \cdot 2^n)$   
(c)  $\theta(2^n)$  (d)  $\theta(3^n)$

Ans. (c)

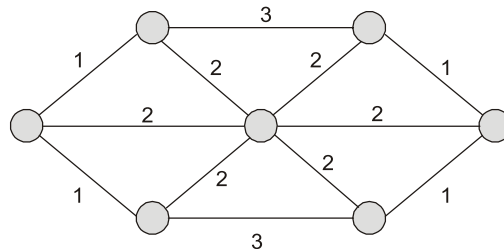
$$T(n) = 5T(n-1) - 6T(n-2)$$

$$T(n) = C_1 2^n + C_2 3^n = 2^n$$

At  $x^2 - 5x + 6 = 0$   
 $x = 2, 3$   
 $r_1, r_1$   
 For  $n = 0$   $1 = C_1 + C_2$   
 For  $n = 1$   $2 = 2C_1 + 3C_2$   
 $\{C_1 = 1, C_2 = 0\}$   
 $T(n) = 2^n = \theta(2^n)$

End of Solution

Q.8 How many MST's possible?



Ans. (9)

$${}^6C_2 - 3 - 3 = 9$$

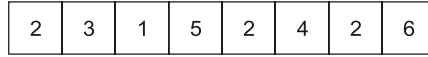
End of Solution

Q.9 Given a undirected simple graph having all MST of even weight than  
 (a) All cycles have even weight edges (OR) all odd weighted edges.  
 (b) All edges have even weight.  
 (c) All cycle have even weight edges.  
 (d) All edges are even or all edges are odd weight.

Ans. (b)

End of Solution

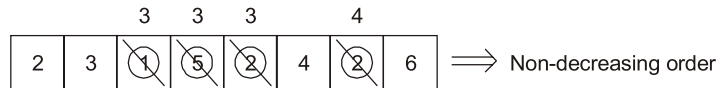
**Q.10** Distance of an array is number of elements to be replaced to make the array in non-decreasing order.



Find the minimum distance of the given array.

- |       |       |
|-------|-------|
| (a) 2 | (b) 3 |
| (c) 4 | (d) 6 |

**Ans.** (c)



End of Solution

**Q.11** If A is adjacency matrix of graph G and A is own inverse.

- (a) G is complete graph
- (b) G is cycle graph
- (c) A is perfect matching in G
- (d) There is no graph exist

**Ans.** (b)

End of Solution

### Databases

**Q.12** FD  $X \rightarrow Y$  is defined as

- 1. X is non-empty
- 2. Y is non-empty
- 3.  $X \cap Y = f$

How many such FD's as possible for attributes R(A, B, C, D)?

**Ans.** (50)

Non-trivial FD:

$$\left\{ \begin{array}{l} A \rightarrow \{B, C, D\} \\ B \rightarrow 2^3 - 1 \\ C \rightarrow \\ D \rightarrow \end{array} \right\} \quad \left\{ \begin{array}{l} AB \rightarrow CD \\ AC \\ AD \\ \vdots \\ {}^4C_2 \end{array} \right\} \quad \left\{ \begin{array}{l} ABC \rightarrow D \\ \vdots \\ {}^4C_3 \end{array} \right\}$$

$$4 * 7 + 6 * 3 + 4 * 1 = 50$$

End of Solution

**Q.13** Given two RDBMS relation person (Pid , City):

Find the minimum cross joins operations required to find at least three persons from same city?

- (a) 2
- (b) 4
- (c) 3
- (d) 1

**Ans.** (a)

Persons		
	<u>Pid</u>	City
$t_1$	$p_1$	$c_1$
$t_2$	$p_2$	$c_1$
$t_3$	$p_3$	$c_1$

$$\pi(\sigma_{T_1.city = T_2.city = T_3.city \wedge T_1.pid \neq T_2.pid \neq T_3.pid} (T_1 \times T_1 \times T_3))$$

Cross join = 2

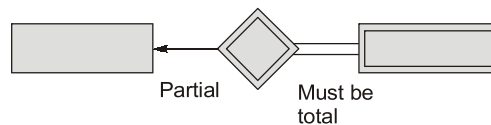
Number of instances = 3

End of Solution

**Q.14** There is a relation from weak entity set to strong entity set. Which of the following is true?

- (a) Total participation must be both sides.
- (b) Total participation must be from strong side.
- (c) No total participation from any side.
- (d) Total participation must be from weak side.

**Ans.** (d)



End of Solution



## TABLET COURSE

MADE EASY Tablet Courses for ESE and GATE provides the flexibility to study anywhere, anytime, as it does not require internet access. Simply turn on the tablet, and you are ready to commence your preparation. This course comes in a 10.5 inch Android OS (Operating System) based Samsung tablet. Utilize this tablet to access the course content. Printed study materials will be sent to your door step. An added advantage of this course is that after completing the program, students can send the tablet to the MADE EASY Corporate Office for a reset, making it available for their further use.

- ✓ **GATE Exclusive** • CE, ME, EE : 800 to 900 Hrs. • EC, IN, CS : 650-700 Hrs.
- ✓ **GATE + ESE** • CE, ME, EE, EC : 1100 to 1200 Hrs.
- ✓ **GATE + SES-GS** • CE, ME, EE : 1150 to 1250 Hrs. • EC, IN, CS : 950-1050 Hrs.
- ✓ **GATE + ESE + SES-GS** • CE, ME, EE, EC : 1450 to 1550 Hrs.

**Note :** SES-GS : General Studies for State Engineering Services Examination.

- The course is offered with a validity of 2 years.



[www.madeeasyprime.com](http://www.madeeasyprime.com)



## RECORDED COURSE

Our Recorded Video Courses for ESE & GATE, allow you to commence your exam preparation anytime, anywhere. The recorded videos are accessible on devices such as desktops, laptops, and mobiles. Our offerings include a Windows-based application for desktops/laptops, as well as dedicated Android and iOS apps. This flexibility ensures that you can pursue your dream of success while fitting your study schedule into your lifestyle.

- ✓ **GATE Exclusive** • CE, ME, EE : 800 to 900 Hrs. • EC, IN, CS, CH : 650-700 Hrs.
- ✓ **GATE + ESE** • CE, ME, EE, EC : 1100 to 1200 Hrs.
- ✓ **GATE + SES-GS** • CE, ME, EE : 1150 to 1250 Hrs. • EC, IN, CS, CH : 950-1050 Hrs.
- ✓ **GATE + ESE + SES-GS** • CE, ME, EE, EC : 1450 to 1550 Hrs.

**Note :** SES-GS : General Studies for State Engineering Services Examination.

- The course is offered with a validity options of 1 year and 2 years.



[www.madeeasyprime.com](http://www.madeeasyprime.com)

Low Cost EMI Facility Available

**Delhi Centre :** 44-A/1, Kalu Sarai, Near Hauz Khas Metro Station, New Delhi - 110016 | **Ph :** 9021300500

**MADE EASY Centres :** Delhi | Bhopal | Hyderabad | Jaipur | Kolkata | Pune

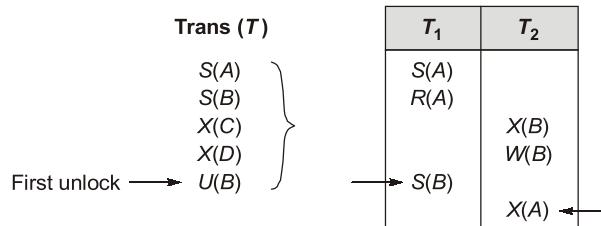


[www.madeeasy.in](http://www.madeeasy.in)



- Q.15** Which is true regarding 2PL protocol?
- (a) If starts unlocking then cannot lock other variable.
  - (b) Deadlock possible with 2PL.
  - (c) 2PL always take serializable schedule.
  - (d) With 2PL, a transaction always the data item being read or write just before away operation and always releases the lock after the operation.

**Ans. (c)**



End of Solution

- Q.16** Which of the following file organization is/are used for efficient I/O scan order
- (a) Heap
  - (b) Sorted
  - (c) Unclustered hash index
  - (d) Unclustered tree index

**Ans. (b)**

Sorted sequence:  
 ⇒ Sequential access  
 ⇒ Seek time

End of Solution

- Q.17** Once the DBMS inform the user that a transaction has been successfully completed, its effect persists even if the system (crash before all its changes) are reflected on the disk. This property is called
- (a) Atomicity
  - (b) Consistency
  - (c) Isolation
  - (d) Durability

**Ans. (d)**

End of Solution

### Compiler Design

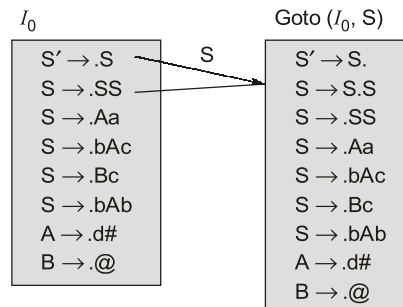
**Q.18** Consider the following grammar:

$S \rightarrow SS \mid Aa \mid bAc \mid Bc \mid bAb$

$A \rightarrow d\#, B \rightarrow @$

The number of items in closure  $[I_0, S]$  if the grammar is parsed by SLR parser.

**Ans. (9)**



Total 9 items.

End of Solution

**Q.19** Match the following:

(P) Lexical Analysis

(Q) Syntax Analysis

(R) Intermediate Code Generation

(S) Code Optimization

(a) P - 4, Q - 2, R - 1, S - 3

(b) P - 3, Q - 2, R - 1, S - 4

(c) P - 1, Q - 2, R - 3, S - 4

(d) P - 2, Q - 4, R - 1, S - 3

(1) Abstract Syntax Tree

(2) Parse Tree

(3) Constant Folding

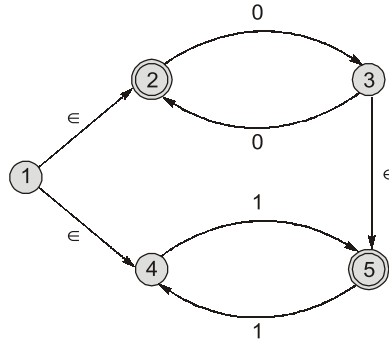
(4) Tokens

**Ans. (a)**

End of Solution

### Theory of Computation

- Q.20** Let  $M$  be the 5-state NFA with  $\epsilon$ -transitions  
Which one of the following regular expression represents the language accepted by  $M$ ?



- (a)  $0^* + (0(00)^* + 1)(11)^*$       (b)  $(00)^* + 1(11)^* + 0(11)^*$   
(c)  $0^* + (11)^*$       (d)  $(00)^* + (1 + (00)^*)(11)^*$

**Ans. (a)**

2 and 5 are final states.

The given machine accepts all zeros i.e.  $0^*$ .

We can reach the final state 5 by other  $0(00)^* + (11)^*$  or  $1(11)^*$

$\therefore$  The result is

$$= 0^* + 0(00)^*(11)^* + 1(11)^*$$

$$= 0^* + (0(00)^* + 1)(11)^*$$

End of Solution

- Q.21** Consider a CFG with the following 3 rules:

$S \rightarrow aS, S \rightarrow aSbS, S \rightarrow c$

Let  $w \in L(G)$ . Let  $n_a(w), n_b(w), n_c(w)$  denote the number of times a, b, c occur in  $w$ , respectively. Which of the following determinants is/are true?

- (a)  $n_c(w) = n_b(w) * 2$       (b)  $n_a(w) > n_b(w)$   
(c)  $n_a(w) > n_c(w) - 2$       (d)  $n_c(w) = n_b(w) + 1$

**Ans. (d)**

$S \rightarrow aS, S \rightarrow aSbS, S \rightarrow c$

$S \rightarrow aS$

$\rightarrow ac$

$S \rightarrow aSbS$

$\rightarrow aaSbSbS$

$\rightarrow aacbcbcb$

By verification process

$$n_c(w) = n_b(w) + 1$$

Answer is option (d).

End of Solution

**Q.22** Let  $L_1 = b^* ab^* (ab^* ab^*)^*$  and  $L_2 = \{w \in (a + b)^* \mid |w| \leq 4\}$   
Then the number of strings in  $L_2$  which are also in  $L_1$  \_\_\_\_\_.

**Ans. (15)**

All the strings  $|w| \leq 4$  in  $L_1$  are also in  $L_2$

$$L = b^* ab^* (ab^* ab^*)^*$$

$L_1$  is  $b^* ab^*$  or  $b^* ab^* ab^* ab^*$

The strings that can be formed from  $b^* ab^*$  which  $|w| \leq 4$  are a, ba,  $b^2 a$ ,  $b^3 a$ , ab,  $ab^2$ ,  $ab^3$ , baL bbab, babb i.e. 10 strings.

The strings that can be format from  $b^* ab^* ab^* ab^*$  with  $|w| \leq 4$  are aaa, baaa, abaa, aaba, aaab i.e. 5 strings.

So, total strings that are common in  $L_1$  and  $L_2$  are 15.

**End of Solution**

### Computer Networks

**Q.23** Which one of the following CIDR prefix exactly represent the range of IP addresses 10.12.2.0 to 10.12.3.255?

- |                  |                  |
|------------------|------------------|
| (a) 10.12.2.0/24 | (b) 10.12.2.0/22 |
| (c) 10.12.0.0/22 | (d) 10.12.2.0/23 |

**Ans. (d)**

**End of Solution**

**Q.24** Which of the following fields of an IP header is/are always modified by any router before it forwards the IP packet?

- |                    |                      |
|--------------------|----------------------|
| (a) TTL            | (b) Protocol         |
| (c) Source address | (d) Header check sum |

**Ans. (a, d)**

**End of Solution**

**Q.25** Consider an ethernet segment with a transmission speed of  $10^8$  bits/sec and a minimum segment length of 500 mm. If the speed of the propagation of the signal in the medium is  $2 \times 10^8$  m/s, then the min frame size (in bits) required for collision detection is \_\_\_\_\_.

**Ans. (500 bits)**

**End of Solution**



# Rank Improvement Course for **GATE 2025**

**Commencing from**  
3<sup>rd</sup> June, 2024

**Teaching Hours :**  
300 to 350 hours

**Course Validity :**  
Till GATE 2025 Exam

**LIVE-ONLINE  
COURSE**

**Streams :**  
CE, ME, EE, EC, CS

## Key Features

- ✓ Comprehensive problem-solving sessions by India's top faculties.
- ✓ Focus on improving accuracy & speed.
- ✓ Practice all types of questions to brush up on your concepts.
- ✓ Newly develop workbooks (e-copy) in line with recent trends in GATE.
- ✓ Highly useful for repeaters candidates.

**Download  
the App**



Android



iOS

 **9021300500**

 **www.madeeasyprime.com**

**Q.26** Consider a TCP connection operating at a point of time with congestion window of size 12 MSS, when a timeout occurs due to packet loss. Assuming that all the segments transmitted in the next two RTT's are acknowledged correctly, the congestion window size (in MSS) during 3<sup>rd</sup> RTT will be \_\_\_\_\_.

**Ans.** (4 MSS)

End of Solution

**Q.27** Which of the following statement about IPv4 fragmentation is/are true?  
(a) Fragmentation of IP datagram is performed only at source of the datagram.  
(b) Fragmentation of IP datagram is performed at only router which finds that size of the datagram to be transmitted exceeds the MTU.  
(c) The reassembly of fragments is performed at all intermediate router along the path from source to destination.  
(d) Reassembly of fragmentation is performed only at destination.

**Ans.** (b, d)

End of Solution

### Computer Organization & Architecture

**Q.28** Instruction format has the following structure instruction number opcode destination source1, source2

$I_1$  : DIV  $R_3$   $R_1$   $R_2$ ;  $R_3 \in R_1/R_2$

$I_2$  : SUB  $R_5$   $R_3$   $R_4$ ;  $R_5 \in R_3 - R_4$

$I_3$  : ADD  $R_3$   $R_5$   $R_6$ ;  $R_3 \in R_5 + R_6$

$I_4$  : MUL  $R_7$   $R_3$   $R_8$ ;  $R_7 \in R_3 * R_8$

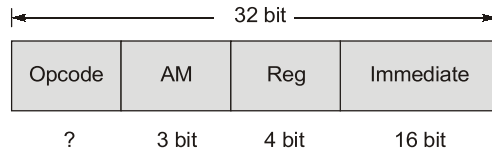
- (a) There is WAW dependency on  $R_3$  between  $I_3$  and  $I_4$   
(b) There is WAR dependency on  $R_3$  between  $I_1$  and  $I_3$   
(c) There is RAW dependency on  $R_3$  between  $I_1$  and  $I_2$   
(d) There is RAW dependency on  $R_3$  between  $I_2$  and  $I_3$

**Ans.** (c)

End of Solution

**Q.29** A processor with 16 GPR's uses 32-bits instruction format. The instruction format consists of an op-code field, an addressing mode field, register operand fields, and a 16-bit scalar operand field. If 8 addressing modes are to be supported, the max. number of unique op-codes possible for every addressing mode is \_\_\_\_\_.

**Ans. (512)**



$$\text{Opcode} = 9 \text{ bit}$$

$$\text{Number of operations} = 8^9 = 512$$

**End of Solution**

**Q.30** Consider non-pipeline processor with 2 GHz clock, average CPI of '6'. It is hence with 5-stage pipeline processor with same clock, consider 1 instructions per cycle and if 20% instructions have 2 cycle stalls due to control hazards and 20% of instructions have 3 cycles stalls due to data hazards. Speedup of pipeline over non-pipeline \_\_\_\_\_.

**Ans. (3)**

$$ET_{\text{non-pipe}} = \text{CPI} \times \text{Cycle time}$$

$$\{n = 100\% \} = 6 \times 0.5 \text{ ns} = 3 \text{ ns}$$

$$ET_{\text{Pipeline}} = (1 + \text{Number of stalls/Instruction}) \text{ cycle time}$$

$$= (1 + [(0.2 \times 2) + (0.2 \times 3)]) 0.5 \text{ ns}$$

$$= 1 \text{ ns}$$

$$S = \frac{ET_{\text{non-pipeline}}}{ET_{\text{pipeline}}} = \frac{3 \text{ ns}}{1 \text{ ns}} = 3$$

**End of Solution**

**Q.31** Largest representable data among all the single precision data is

S	Exponent	Mantissa
---	----------	----------

- (a) 0 0 1 1 1 1 1 1 1 23 0's      (b) 0 0 1 1 1 1 1 1 1 23 1's  
 (c) 0 1 1 1 1 1 1 1 0 23 1's      (d) 0 1 1 1 1 1 1 1 1 23 1's

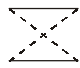
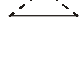
**Ans. (c)**

**End of Solution**

**Q.32** Consider a disk with the following specifications: rotation speed of 6000 RPM, average seek time of 5 ms, 500 sectors/track, 512 B sectors. A file has content stored in 3000 sectors located randomly on the disk. Assuming average rotational latency, the total time (in secs, rounded to 2 places) to read the entire file from the disk is?

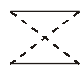
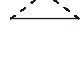
**Ans. (30.06)**

Average seek time = 5 ms

6000 revolutions  1 min (60 sec)  
1 revolution  ?

$$\Rightarrow \frac{60}{6000} \text{ sec} = 10 \text{ ms}$$

Average rotational latency =  $\frac{1}{2}$  revolution time = 5 ms

1 revolution time  1 track (500 sectors)  
? time  1 sector

$$\Rightarrow \frac{10 \text{ ms}}{500} = 0.02 \text{ ms}$$

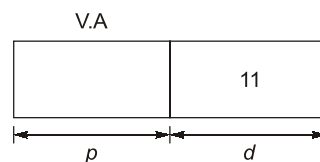
$$T_{\text{avg}} = (5 \text{ ms} + 0.02 \text{ ms} + 0) \times 3000 = 30.06 \text{ ms}$$

End of Solution

**Q.33** Consider a memory management system page size is 2 KB. The page numbers 0, 1, 2, 3 are stored in frames 1, 3, 2, 0 respectively. What is the physical address of virtual address 2500 \_\_\_\_\_?

**Ans. (6596)<sub>10</sub>**

Page size = 2 KB = 2<sup>11</sup> B



$$(2500)_{10} = \underbrace{(100)}_p \underbrace{111000}_{d} \underbrace{(100)}_d$$

Offset = 11 bits



Page number '1'.

Page number '1' in frame number '3'.

0	1
1	3
2	2
3	0

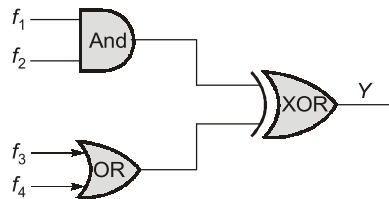
$$\text{Frame number (3)} = (11)_2$$

$$\underbrace{(11 \ 00111 \ 000 \ 100)}_f \underbrace{\phantom{000 \ 100}}_d \phantom{000 \ 100} = (6596)_{10}$$

End of Solution

### Digital Logic

- Q.34** Consider  $f_1, f_2, f_3, f_4$  expressed in sum of minterms  
 $f_1 = \Sigma(0, 2, 3, 5, 7, 8, 11, 13)$ ,  $f_2 = \Sigma(1, 3, 5, 7, 11, 13, 15)$   
 $f_3 = \Sigma(0, 1, 4, 11)$ ,  $f_4 = \Sigma(0, 2, 6, 13)$   
 The output  $y$  of the circuit is



- (a)  $Y = \pi(8, 9, 10, 11, 12, 13, 14, 15)$   
 (b)  $Y = \pi(3, 4, 5, 6, 7, 8, 9, 10, 12, 14, 15)$   
 (c)  $Y = \Sigma(0, 1, 2, 3, 4, 5, 6, 7)$   
 (d)  $Y = \Sigma(0, 1, 2, 11, 13)$

**Ans. (a, c)**

$$\begin{aligned} \text{Output and AND gate } x &= f_1 \cdot f_2 \\ &= \Sigma m(3, 5, 7, 11, 13) \end{aligned}$$

$$\begin{aligned} \text{Output and OR gate } z &= f_3 + f_4 \\ &= \Sigma m(0, 1, 2, 4, 6, 11, 13) \end{aligned}$$

$$\begin{aligned} \text{Output of EX-OR gate } y &= x \oplus z \\ &= \Sigma m(0, 1, 2, 3, 4, 5, 6, 7) \\ &= \pi M(8, 9, 10, 11, 12, 13, 14, 15) \end{aligned}$$

End of Solution



# Conventional Questions Practice Programme for ESE & State Exams

Commencing from  
1<sup>st</sup> /2<sup>nd</sup> week of March, 2024

Teaching Hours :  
300 to 350 hours

Course Duration :  
100 days

**OFFLINE  
& ONLINE  
COURSE**  
Streams :  
CE, ME, EE, EC

## Key Features

- ✓ In-depth discussion on conventional questions.
- ✓ Beneficial to develop numerical question solving techniques.
- ✓ Helps to improve answer writing and presentation skills.
- ✓ Discussion on probable questions.
- ✓ Updated Mains workbook with wide range of practice questions.
- ✓ ESE Mains test series will be conducted on every Sunday in synchronization with the subjects.

**Note :** Offline classes will be conducted at Delhi Centre.

**Delhi Centre :** 44-A/1, Kalu Sarai, Near Hauz Khas Metro Station, New Delhi - 110016 | **Ph :** 9021300500

**MADE EASY Centres :** Delhi | Bhopal | Hyderabad | Jaipur | Kolkata | Pune |  [www.madeeasy.in](http://www.madeeasy.in)

**Q.35** Which of the following is/are equivalent to  $(224)_5$

- (a)  $(121)_7$  (b)  $(50)_{16}$   
(c)  $(100)_8$  (d)  $(64)_{10}$

**Ans.** (a, c, d)

$$(224)_5 = 2 \times 5^2 + 2 \times 5^1 + 4 \times 5^0 \\ = 50 + 10 + 4 = (64)_{10}$$

(a)  $(121)_7 = 1 \times 7^2 + 2 \times 7^1 + 1 \times 7^0 \\ = 49 + 14 + 1 = (64)_{10}$

(b)  $(50)_{16} = 5 \times 16^2 + 0 \times 16^0 \\ = (80)_{10}$

(c)  $(100)_8 = 1 \times 8^2 + 0 \times 8^1 + 0 \times 8^0 \\ = (64)_{10}$

Answer is (a), (c) and (d).

End of Solution

**Q.36** Which of the following is incorrect relation?

- (a)  $x \cdot 1 = x$  (b)  $x + \bar{x} = 1$   
(c)  $1 + x = 1$  (d)  $x \cdot x = 0$

**Ans.** (d)

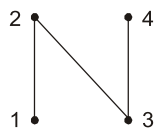
- (a)  $x \cdot 1 = x$  True  
(b)  $x + \bar{x} = 1$  True  
(c)  $1 + x = 1$  True  
(d)  $x \cdot x = 0$  False

End of Solution

### Discrete Mathematics

**Q.37**  $A = \{1, 2, 3, 4\}$  and 'P' is a partial order set on  $P = \{(x, x) \mid x \in A\} \cup \{(1, 2) (3, 2) (3, 4)\}$  then total number of orders on 'A' that contains 'P'.

**Ans.** (4)



Topological order:

- 1 3 2 4  
1 3 4 2  
3 1 2 4  
3 1 4 2

End of Solution

**Q.38**  $p$  : Fail grade can be given.  
 $q$  : Students scores more than 50% marks.  
 Which of the following is logical expression for the statement.  
 "Fail grade can't be given when student score more than 50% of marks".

- (a)  $\neg p \rightarrow q$  (b)  $\neg q \rightarrow p$   
 (c)  $q \rightarrow p$  (d)  $q \rightarrow \neg p$

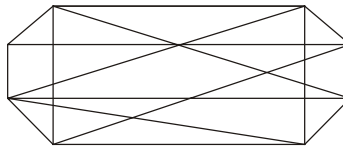
**Ans. (d)**  
 A when B  
 If B then A  
 $B \rightarrow A$



$$\Rightarrow q \rightarrow \neg p$$

End of Solution

**Q.39** The chromatic number of the following graph is \_\_\_\_\_.



**Ans. (2)**

$$\chi(G) = 2$$

End of Solution

### Engineering Mathematics

**Q.40** Given  $f(x) = 1 - f(2 - x)$ , then  $\int_0^2 f(x) dx = ?$

- (a) 1 (b) -1  
 (c) 0 (d) 2

**Ans. (a)**

$$f(x) = 1 - f(2 - x)$$

or  $f(2 - x) = 1 - f(x)$

Now,

$$\begin{aligned} I &= \int_0^2 f(x) dx = \int_0^2 f(2-x) dx \\ &= \int_0^2 (1 - f(x)) dx \end{aligned}$$

$$\int_0^2 f(x) dx = \int_0^2 (1) dx - \int_0^2 f(x) dx$$

$$2I = (x)_0^2 = 2 - 0$$

or  $I = 1$

End of Solution

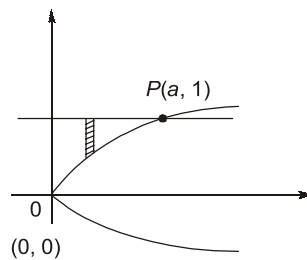
Q.41  $\int_{x=0}^a \int_{y=\sqrt{x}}^{y=1} e^{y^3} dy dx = (e-1)$ , then the value of  $a$  is

Ans. (3)

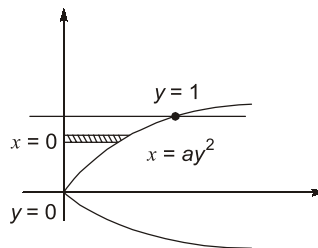
Region of integration is

$$x = 0, x = a, y = \sqrt{\frac{x}{a}}, y = 1$$

or  $x = 0, x = a, y^2 = \frac{x}{a}, y = 1$



By changing the order of integration



So,

$$\begin{aligned} I &= \int_0^a \int_{y=\sqrt{\frac{x}{a}}}^{y=1} e^{y^3} \cdot dy dx \\ &= \int_{y=0}^1 \int_{x=0}^{ay^2} e^{y^3} \cdot (dx dy) \\ &= \int_{y=0}^1 (x)_{x=0}^{ay^2} \cdot (e^{y^3} dy) \end{aligned}$$

$$= \int_{y=0}^1 ay^2 \cdot e^{y^3} dy$$

Put,  $y^3 = t$

$$\Rightarrow y^2 dy = \frac{dt}{3}$$

$$= a \int_{y=0}^1 e^t \frac{dt}{3} - \frac{a}{3}(e-1)$$

$$\approx (e-1)$$

$$\Rightarrow a = 3$$

**End of Solution**

**Q.42** The probability of getting distinct number while throwing dice six times?

- (a)  $\frac{5}{324}$  (b)  $\frac{5}{6^6}$   
 (c)  $\frac{5}{6^5}$  (d)  $\frac{5}{6^4}$

**Ans. (a)**

$$\text{Total outcomes} = 6 \times 6 \times 6 \times 6 \times 6 \times 6 = 6^6$$

$$\text{Favourable outcomes (R.N.A.)} = 6 \times 5 \times 4 \times 3 \times 2 \times 1 = 6!$$

So, Required probability =  $\frac{\text{Favourable}}{\text{Total}}$

$$= \frac{6!}{6^6} = \frac{5}{324}$$

**End of Solution**

**Q.43** If  $A_{n \times n}$  such that  $A$  is real matrix and  $B$  is any matrix which is obtained from  $A$  by interchanging any two rows then pick the true statements?

- (a) if  $A$  is invertible so  $B$  will be also.  
 (b)  $|B| = -|A|$   
 (c) if Trace ( $A$ ) = 0 then Trace ( $B$ ) = 0  
 (d) if  $A$  is symmetric then  $B$  is also symmetric.

**Ans. (a, b)**

Let us take  $A = \begin{bmatrix} 1 & 2 \\ 2 & -3 \end{bmatrix}$  and  $B = \begin{bmatrix} 2 & -3 \\ 1 & 2 \end{bmatrix}$

By  $R_1 \leftrightarrow R_2$

$\therefore |A| = -7, |B| = 7$  so (b) is true

$\therefore |B| = -|A|$  so (a) is true

Trace ( $A$ ) = -2 and Trace ( $B$ ) = 4 so (c) is not true

$A$  is symmetric but  $B$  is not symmetric so (d) is not true.

**End of Solution**



**SSC-JE**

**RRB-JE**

**State-JE/AE**

## FOUNDATION COURSES

**TECHNICAL & NON-TECHNICAL : CE, ME, EE**

The foundation batches are taught comprehensively which cover the requirements of all JE level Examinations.

**MODE : ONLINE**

- ✓ Classes by experienced and renowned faculties having experience in SSC-JE field.
- ✓ Comprehensive coverage of Technical & Non-technical syllabus for Prelims & Mains.
- ✓ Systematic subject sequence for Paper-I & II.
- ✓ Well-researched study material.
- ✓ Exam oriented learning ecosystem.
- ✓ Interaction facility for doubt removal.
- ✓ Time bound syllabus completion.
- ✓ Regular performance assessment through class tests.

**RECORDED CLASSES**

**Admissions open**



[www.madeeasyprime.com](http://www.madeeasyprime.com)

Download **MADE EASY PRIME** app



Android



iOS

**Low Cost EMI Facility Available**

**9021300500**

**www.madeeasyprime.com**

### Operating System

**Q.44**  $2 \times 10^8$  m/s signal speed, \_\_\_\_\_ bites to be transferred length of wire 500 m. Frame size to detect collision.

**Ans.** (500)

**End of Solution**

**Q.45** Consider a process 'P' running on a CPU. Which one or more of the following elements will always trigger a CS by the OS. Than results in process P moving to a non-running state (e.g. ready, blocked)?

- (a) An interrupt raised by disk driver data required by some other process
- (b) An trimmer interrupt is raised by the H/W
- (c) P makes a blocking system call so read a block of data from the disk
- (d) P tries to access a page that is in the swap space, triggering a page faults.

**Ans.** (b, c, d)

**End of Solution**

**Q.46** Which of the following statements is true about the 2PL protocol?

- (a) 2PL permits only serializable schedules.
- (b) With 2PL, once a lock is released an any data item inside a transaction, no more locks an any data item can be obtained inside that transaction.
- (c) A deadlock is possible with 2PL.
- (d) With 2PL, a transaction always locks the data item being read or written just before away operation and always releases the lock just after the operation.

**Ans.** (a, b, c)

**End of Solution**

**Q.47** A deadlock is passible with 2PL. with 2PL, a transaction always locks the data item being read or written just before energy operation and always release the lock just after that operation.

**Ans.** (False)

**End of Solution**



### Programming & Data Structures

**Q.48** What is the output of following programme

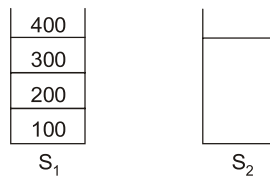
```
# include <stdio.h>
int main( ) {
double a[2] = {20.0, 25.0}, *p, *q;
    p = a;
    q = p + 1;
printf("%d, %d", int (q - p), int (*q - *p));
return 0; }
```

- (a) 8, 5 (b) 1, 8  
(c) 1, 5 (d) 4, 8

**Ans.** (c)

End of Solution

**Q.49**  $S_1$  : Capacity : 4  
 $S_2$  : Capacity : 2



1. Push to  $S_2$  : Pop from  $S_1$  and push to  $S_2$
  2. Push to  $S_1$  : Pop from  $S_2$  and push to  $S_1$
  3. Generate o/p : Pop top elements from  $S_1$  and print.
- Which of the following sequence of output can be generated?
- (a) 200, 300, 400, 100 (b) 100, 200, 400, 300  
(c) 400, 200, 100, 300 (d) 300, 200, 400, 100

**Ans.** (a)

End of Solution



# POSTAL BOOK PACKAGES

## Revised and updated study material

- ESE
- GATE
- PSUs
- CSE
- SSC-JE
- RRB-JE
- STATE SERVICES EXAMS

Our **Postal Book Packages** cater to the needs of college-going students, working professionals, and individuals unable to join classroom courses. These books, offered by MADE EASY, are designed to be compact, comprehensive, and easily understandable. We have put our efforts to ensure error-free content, incorporating smart and shortcut techniques specifically tailored for solving numerical problems.

## Key Features

- ✓ Emphasis on technical and non-technical aspects both (Including GS, Aptitude, Reasoning and Engineering Mathematics).
- ✓ Subject-wise Theory, objective and conventional practice sets (as per syllabus).
- ✓ Previous year topic-wise question papers along with detailed solutions.
- ✓ Proven track record of making students succeed.

For offline purchase, visit in-person at any MADE EASY center.

Books will be sent to your provided address.



For online purchase, visit :

[www.madeeasypublications.org](http://www.madeeasypublications.org)

**MADE EASY Delhi Centre** : 44-A/1, Kalu Sarai, Near Hauz Khas Metro Station, New Delhi - 110016 | **Ph** : 9021300500

**MADE EASY Centres** : Delhi | Bhopal | Hyderabad | Jaipur | Kolkata | Pune

[www.madeeasy.in](http://www.madeeasy.in)

Q.50

```
int g(int p)
{
    printf("%d", p);
    return p;
}
int h(int q)
{
    printf("%d", q);
    return q;
}
void f(int x, int y)
{
    g(x);
    h(y);
}
int main( )
{
    f(g(10), h(20));
}
```

What is o/p printed? (parameters all evaluated from left to right).

Ans. (10201020)

End of Solution

■■■■

# MADE EASY Group

LAUNCHES

# MENIIT

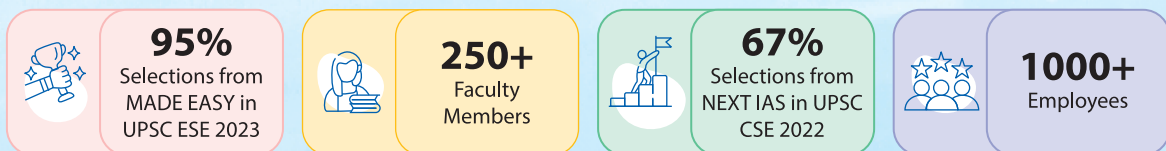
## NEET IIT-JEE

With a legacy of 23 years, the **MADE EASY Group** is a pioneer in the fields of ESE and GATE. The group offers courses for the Civil Services Examination under the NEXT IAS brand name. Under the guiding light of **Mr. B. Singh (Ex. IES; founder of MADE EASY Group and an alumnus of IIT BHU)** we are focused to provide best quality teaching to our students with experienced and renowned faculty members. We have been constantly producing toppers and large number of rank holders continuously since last many years.



**MENIIT** is a new addition to the MADE EASY Group, which provides coaching for the prestigious NEET and IIT-JEE. As a part of the esteemed MADE EASY Group, MENIIT upholds the same values of academic excellence, integrity and student centricity.

### MADE EASY Group Statistics

A large red banner with gold scroll-like borders. The text is in yellow and white. Below the banner is a yellow box with black text.

**Inaugural Offer**  
**50% DISCOUNT**  
on tuition fee to first 100 students

**Admissions Open**

Corporate Office : 44-A/1, Kalu Sarai,  
Near Hauz Khas Metro Station  
New Delhi - 110016

8448815580  
[www.meniit.com](http://www.meniit.com)



Our Initiatives

