

14. Waterways are not developed in Brazil.
15. Dense railway network is developed in North Indian plains.
16. A wide variety of species of insects is found in Brazil.
17. Average density of population is high in India.
18. Natural ports are less on the eastern coast of India.
19. Convectional rainfall is less in India.
20. Wildlife in India is decreasing day by day.
21. Development of transportation is useful for overall development of country.
22. Tropical cyclones occur rarely in Brazil.
23. Settlements are sparse in north eastern Brazil.
24. Urbanization is increasing rapidly in India.
25. Except Delhi and Chandigarh, urbanization is low in other parts of India.
26. The density of population is sparse in Amazon basin.
27. There is not much difference in the range of temperature in Manaus.
28. Like India, there is need of conservation of forests in Brazil too.
29. The rain forests of Brazil are known as 'lungs of the world'.
30. Population density is high in the Ganga plains.
31. As compared to Amazon, pollution in river Ganga will affect human life greatly.
32. India receives precipitation from the north east monsoon winds too.
33. There is mixed economy in Brazil and India.
34. We rely on the sea route for international trade.
35. Per capita land availability is more in Brazil as compared to India.

**Q6.A) Prepare a line graph with the help of given statistical information and answer the questions given below-**

**India-trends of urbanization(%)**

Year	India
1961	18.0
1971	18.2
1981	23.3
1991	25.7
2001	27.8
2011	31.2

Questions-

1. In which year 18% urbanization is found?
2. Urbanization has increased by how many percent from 2001 to 2011?
3. In which decade was the growth of urbanization highest?

OR

**Q6.B) Observe the following graph and answer the questions given below-**

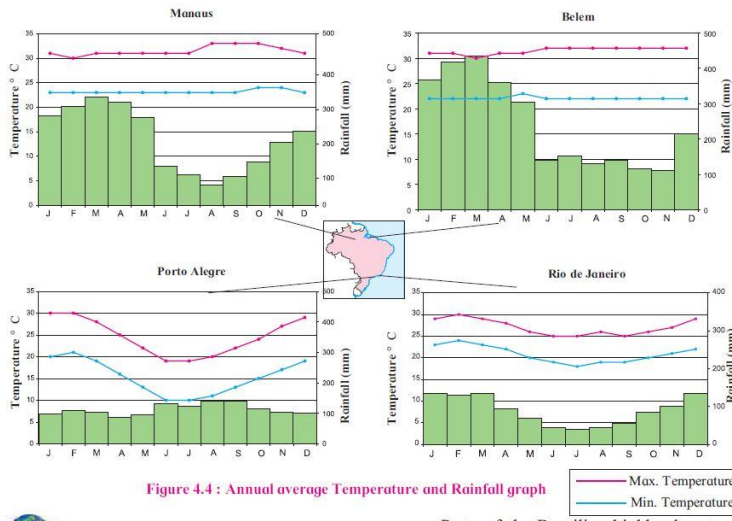


Figure 4.4 : Annual average Temperature and Rainfall graph

**Questions-**

1. In which month the highest temperature is found in all four cities?
2. In which city the highest rainfall is found?
3. Write the rainy season period of Brazil?
4. Which city is having highest temperature range? How much?
5. Which type of climate is found in Rio de Janeiro?

**Q6.A) Prepare a simple bar graph with the help of given statistical information and answer**

the questions given below-

### India-life expectancy

Years	Life expectancy
1960	41
1970	48
1980	54
1990	58
2000	63
2010	63
2016	68

OR

Q6.B) Observe the following graph and answer the questions given below-

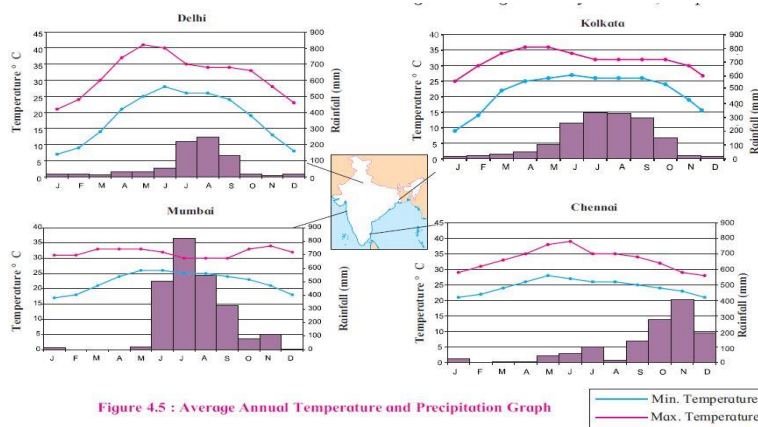


Figure 4.5 : Average Annual Temperature and Precipitation Graph

### Questions-

1. What is the difference between season period of rainfall in Chennai and other places? Why?
2. Which similarities are found in the temperature cycle of Delhi and Kolkata?
3. Write average maximum and minimum temperature range of all four cities.
4. Which city have low temperature range? Why?
5. Which city have high temperature range? Why?
6. Write about climate of Mumbai according to its temperature and rainfall.

**Q6.A) Prepare a simple bar graph with the help of given statistical information and answer the questions given below-**

**Export of India to Brazil (million US dollars)**

Year	Export
2008	3700
2009	2200
2010	4200
2011	6100
2012	5000

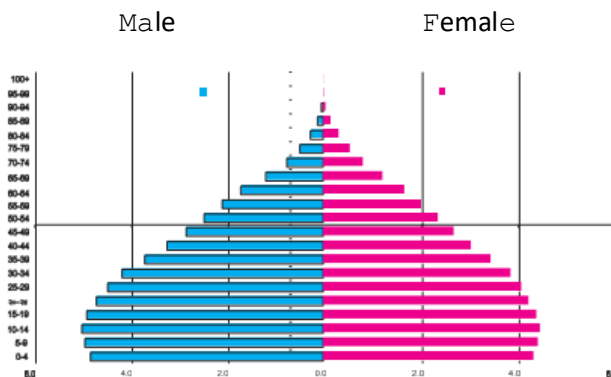
Questions-

1. How much export was found in 2008?
2. In which year highest export of India was found?
3. How much export increased in millions between 2009 and 2011?

OR

**Q6.B) Observe the following graph and answer the questions given below-**

**India- % of population (2016)**



1. Which type of graph is this?
2. Which age group has highest population?
3. Write class interval of age groups given on Y-axis.
4. Whose number is more in males and females of age above 60?
5. How much percent of females are found in age group of 55 to 59 years?
6. After which age group is the decrease in population found?

**Q6.A) Prepare a simple bar graph with the help of given statistical information and answer the questions given below-**

**Brazil-% of urban population**

Year	% of urban population
1960	47.1
1970	56.8
1980	66.0
1990	74.6
2000	81.5
2010	84.6

Questions-

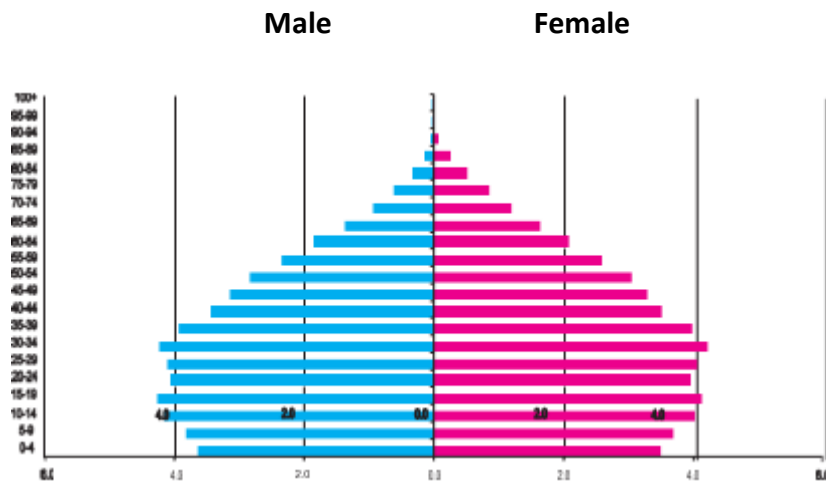
1. What is the interval of years in the data?
2. During which year did rapid urbanization start?

3. Write five sentences about the analysis of graph.

OR

**Q6.B) Observe the following graph and answer the questions given below-**

**Brazil- % of population (2016)**



1. Which type of graph is this?
2. Which age group has highest population?
3. Write class interval of age groups given on Y-axis.
4. Whose number is more in males and females of age above 60?
5. How much percent of females are found in age group of 55 to 59 years?
6. After which age group is the decrease in population found?

**Q6.A) Prepare a simple bar graph with the help of given statistical information and answer**

the questions given below-

% of GDP of India and Brazil

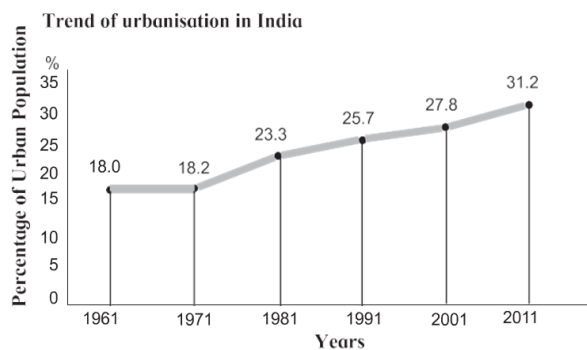
year	India	Brazil
1970	08	17
1980	15	20
1990	18	15
2000	28	24
2010	50	25
2016	40	26

Questions-

1. Which country have highest percentage of GDP?
2. Write percentage of GDP of India in 2016.
3. How much percentage of GDP of Brazil in 1980?

OR

Q6.B) Observe the following graph and answer the questions given below-



1. What was the percentage of urbanisation in 1961?
2. In which decade was urbanisation the highest?
3. In which decade was the growth of urbanisation lowest?
4. What inference can you draw regarding India's urbanisation after reading the graph?
5. In which decade is the percentage of urbanization 27.8?
6. What is the difference between the percentage of urbanisation from 1971 and 1981?

Q6.A) Prepare a simple bar graph with the help of given statistical information and answer

the questions given below-

### Brazil-life expectancy

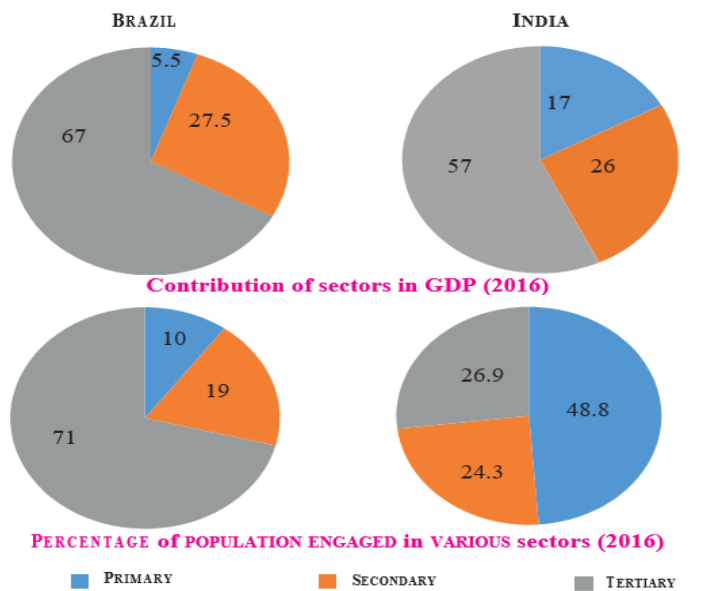
Years	Life expectancy
1960	54
1970	59
1980	61
1990	65
2000	70
2010	73
2016	75

Questions-

1. What is the interval of years in the data?
2. What is the difference in life expectancy of 1960 and 2016?
3. Write five sentences about the analysis of graph.

OR

**Q6.B) Observe the following graph and answer the questions given below-**



1. Which country has a higher percent of population engaged in primary activities?



2. In which country is the contribution of tertiary sector greater in the GDP?
3. In which country is the share of secondary activities more in the GDP?
4. Can we say that Brazil is an agrarian economy like India? Give reasons.
5. Which country has a higher percent of population engaged in secondary activities?
6. How much percent of population is engaged in tertiary activities in India?

**Q7. Answer the following questions in brief-**

1. Prepare a questionnaire for interview of a farmer during a field visit.
2. Explain about the historical background of India and Brazil.
3. Write about the factors affecting the climate of Brazil.
4. Describe in brief about the climatic changes occurring in India while going from south to north.
5. Which factors attract more tourists in Brazil?
6. How are Brazil and India different from each other in terms of location?
7. Make a report on your field visit.
8. Explain the importance of the Himalayas and the Indian Ocean with respect to the climate of India.
9. Giving examples, correlate climate and population distribution.
10. Differentiate between the physiography of Brazil and India.
11. Why has mining not developed in the western part of Brazil?
12. What could be the reasons behind the formation of swamps in the extensive continental location of Pantanal?
13. Differentiate between the forest types of Brazil and India.
14. What environmental issues are faced by Brazil and India?
15. Correlate wildlife and natural vegetation in India and Brazil.
16. Describe the latitudinal and longitudinal extent of India and Brazil.
17. What measures are being taken to control pollution in the rivers of India?
18. Prepare a questionnaire for a field visit to a factory.
19. Compare the climates of Brazil and India.
20. What are the similarities and differences between the fishing activities that are carried out in India and Brazil?
21. Explain the characteristics of the North Indian Plains.
22. Why does the deciduous type of vegetation occupy most of India?
23. Which are the major water divides of India giving examples.
24. How will you manage the litter during the field visit?
25. Write about factors affecting on the climate of Brazil.
26. What are the difficulties in the development of the railway system in Brazil's internal areas?
27. What are the major causes of degradation of forests in Brazil and India?

28. What items will you take with you for the field visit?
29. Explain the similarities and differences between the population distribution in Brazil and India.
30. Which means of communication expedited the field of communication?
31. Write a comparative note on urbanisation in Brazil and India.
32. Differentiate between the human settlements in Ganga river basin and the Amazon river basin.
33. Why do human settlements grow in specific locations only?

\*\*\*\*\*