

PHYSICS

SECTION - A

Multiple Choice Questions: This section contains 20 multiple choice questions. Each question has 4 choices (1), (2), (3) and (4), out of which **ONLY ONE** is correct.

Choose the correct answer:

1. Find the dimensions of $\frac{B}{\mu_0}$
- (1) [AL] (2) [AL⁻¹]
(3) [MAL] (4) [MALT⁻¹]

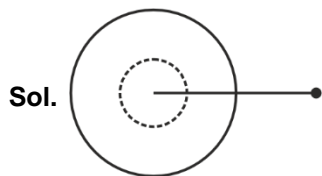
Answer (2)

Sol. $\oint B \cdot dl = \mu_0 i \Rightarrow \frac{B}{\mu_0} = \frac{i}{l} \equiv [AL^{-1}]$

2. Solid sphere of mass M , radius R exerts force F on a point mass. Now a concentric spherical mass $\frac{M}{7}$ is removed. What is new force?

- (1) $\frac{F}{7}$ (2) $\frac{6}{7}F$
(3) $\frac{5F}{7}$ (4) $\frac{3F}{7}$

Answer (2)

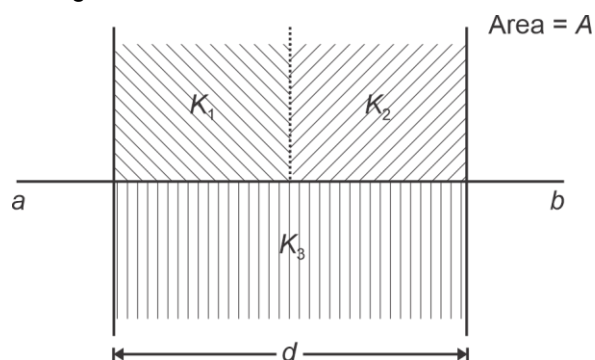


$$F = \frac{GMm}{r^2}$$

$$F' = \frac{G\left(M - \frac{M}{7}\right)m}{r^2}$$

$$\Rightarrow F' = \frac{6}{7}F$$

3. Find out equivalent capacitance for the situation shown in figure.



- (1) $C_{eq} = \frac{A\epsilon_0}{d} \left(\frac{K_1K_2 + K_2K_3 + K_3K_1}{K_1 + K_2} \right)$
(2) $C_{eq} = \frac{A\epsilon_0}{d} \left(\frac{2K_1K_2 + K_2K_3 + K_3K_1}{2(K_1 + K_2)} \right)$
(3) $C_{eq} = \frac{A\epsilon_0}{d} \left(\frac{K_1K_2 + K_2K_3 + K_3K_1}{2(K_1 + K_2)} \right)$
(4) $C_{eq} = \frac{A\epsilon_0}{2d} \left(\frac{K_1K_2 + K_2K_3 + K_3K_1}{(K_1 + K_2)} \right)$

Answer (2)

Sol. Here,

$$C_1 = \frac{2 \times A\epsilon_0 K_1}{2d} = \frac{A\epsilon_0 K_1}{d}$$

$$C_2 = \frac{A\epsilon_0 K_2}{d}$$

$$C_3 = \frac{A\epsilon_0 K_3}{2d}$$

Now C_1 and C_2 are in series

$$\text{So, } \frac{1}{C'} = \frac{1}{C_1} + \frac{1}{C_2}$$

$$\Rightarrow \frac{1}{C'} = \frac{d}{A\epsilon_0 K} \left[\frac{1}{K_1} + \frac{1}{K_2} \right] = \frac{d(K_1 + K_2)}{A\epsilon_0 K_1 K_2}$$

Delivering Champions Consistently



Aakash
Medical | IIT-JEE | Foundations

JEE (Advanced) 2024

JEE (Main) 2024



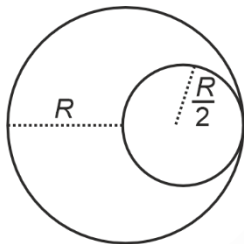
$$\Rightarrow C_1' = \frac{A\epsilon_0 K_1 K_2}{d(K_1 + K_2)}$$

Now C_1' is parallel to C_3

$$\Rightarrow C_{eq} = \frac{A\epsilon_0}{d} \left[\frac{K_1 K_2}{K_1 + K_2} + \frac{K_3}{2} \right]$$

$$\Rightarrow C_{eq} = \frac{A\epsilon_0}{d} \left[\frac{2K_1 K_2 + K_2 K_3 + K_3 K_1}{2(K_1 + K_2)} \right]$$

4. From a sphere of mass M and radius R , a cavity of radius $\frac{R}{2}$ is created. Find the moment of inertia about an axis passing through the centre of sphere and cavity.

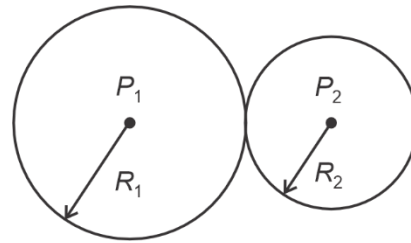


- (1) $\frac{31}{48} MR^2$
- (2) $\frac{31}{80} MR^2$
- (3) $\frac{13}{32} MR^2$
- (4) $\frac{21}{32} MR^2$

Answer (2)

$$\begin{aligned} \text{Sol. } I &= \frac{2}{5} MR^2 - \frac{2}{5} \left(\frac{M}{8} \right) \left(\frac{R}{2} \right)^2 \\ &= \frac{31}{80} MR^2 \end{aligned}$$

5. Find the radius of curvature of the common surface of two bubbles ($R_1 > R_2$)



- (1) $R = \frac{R_1 R_2}{R_1 + R_2}$
- (2) $R = \frac{2R_1 R_2}{R_1 - R_2}$
- (3) $R = \frac{R_1 R_2}{R_1 - R_2}$
- (4) $R = \frac{R_1 R_2}{(R_1 - R_2)}$


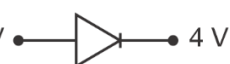
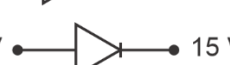

Answer (3)

$$\text{Sol. } P_1 - P_0 = \frac{4S}{R_1}; P_2 - P_0 = \frac{4S}{R_2}$$

$$\text{So, } P_2 - P_1 = \Delta P = \frac{4S}{R} = 4S \left[\frac{1}{R_2} - \frac{1}{R_1} \right]$$

$$\text{or } \frac{1}{R} = \frac{R_1 - R_2}{R_1 R_2}$$

6. From the given option, identify the diode connected in forward bias.

- (1) 
- (2) 
- (3) 
- (4) 

Answer (1)

Sol. Only in option (1), the p-side is connected at higher potential than the n-side of the diode.



Delivering Champions Consistently



Aakash
Medical | IIT-JEE | Foundations


JEE (Advanced) 2024




AIR 25
Rishi Shekher Shukla
2 Year Classroom




AIR 67
Krishna Sai Shishir
2 Year Classroom




AIR 78
Abhishek Jain
2 Year Classroom



AIR 93
Hardik Aggarwal
2 Year Classroom



AIR 95
Ujjwal Singh
2 Year Classroom




AIR 98
Rachit Aggarwal
2 Year Classroom

JEE (Main) 2024



AIR 1
Sanvi Jain
2 Year Classroom



AIR 15
M Sai Divya Teja Reddy
2 Year Classroom



AIR 19
Rishi Shekher Shukla
2 Year Classroom

7. Radius of electron in ground state for hydrogen is a_0 , then radius of electron in He^+ ion in 3rd excited state is
- a. Then $\frac{a_0}{a}$ is

- (1) $\frac{1}{2}$
(2) $\frac{1}{4}$
(3) $\frac{1}{16}$
(4) $\frac{1}{8}$

Answer (4)

Sol. $r = \frac{n^2}{Z} r_0 \Rightarrow \text{for } H$

$$a_0 = \frac{1}{1} r_0$$

$$a = \frac{4^2}{2} r_0$$

$$\frac{a_0}{a} = \frac{1}{8}$$

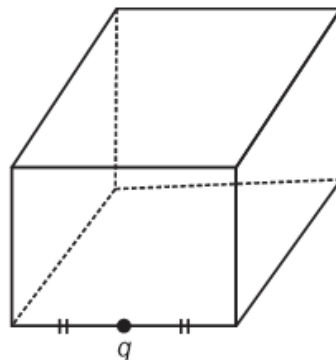
8. Ice at -10°C is to be converted into steam at 110°C . Mass of ice is 10^{-3} kg. What amount of heat is required?
- (1) $\Delta Q = 730$ cal (2) $\Delta Q = 900$ cal
(3) $\Delta Q = 1210$ cal (4) $\Delta Q = 870$ cal

Answer (1)

Sol. -10°C ice to 0°C ice $\rightarrow 0^\circ\text{C}$ ice to 0°C water + 0°C water to 100°C water + 100°C water to 100°C steam + 110°C steam.

$$\Rightarrow \Delta Q = \left(1 \times \frac{1}{2} \times 10\right) + (1 \times 80) + (1 \times 1 \times 100) + (1 \times 540) + \left(1 \times \frac{1}{2} \times 10\right) = 730 \text{ cal}$$

9. A charge of value q is placed at the edge of a imaginary cube of side a as shown in figure. Find the net flux through the cube



- (1) $\frac{q}{6\epsilon_0}$ (2) $\frac{q}{4\epsilon_0}$
(3) $\frac{q}{8\epsilon_0}$ (4) $\frac{q}{2\epsilon_0}$

Answer (2)

Sol. ϕ_4 such cubes = $\frac{q}{\epsilon_0}$

$$\phi_1 \text{ cube} = \frac{q}{4\epsilon_0}$$

10. A closed organ pipe in 9th harmonic resonates with 4th harmonic of open organ pipe [$l_{\text{closed}} = 10$ cm]. Find length of open organ pipe.

- (1) $L_0 = 15$ cm
(2) $L_0 = \frac{100}{9}$ cm
(3) $L_0 = \frac{110}{7}$ cm
(4) $L_0 = \frac{80}{9}$ cm

Answer (4)

Sol. $\frac{9v}{4L_c} = \frac{4v}{2L_0} \Rightarrow L_0 = \frac{8L_c}{9}$

Delivering Champions Consistently

Aakash
Medical | IIT-JEE | Foundations

JEE (Advanced) 2024

AIR 25
Rishi Shekher Shukla
2 Year Classroom

AIR 67
Krishna Sai Shishir
2 Year Classroom

AIR 78
Abhishek Jain
2 Year Classroom

AIR 93
Hardik Aggarwal
2 Year Classroom

AIR 95
Ujjwal Singh
2 Year Classroom

AIR 98
Rohit Aggarwal
2 Year Classroom

JEE (Main) 2024

AIR 1
Sanyal Jais
100 PERCENTILE
Karnataka Toppers

AIR 15
M Sai Divya Teja Reddy
100 PERCENTILE
Telangana Toppers

AIR 19
Rishi Shekher Shukla
100 PERCENTILE
Telangana Toppers

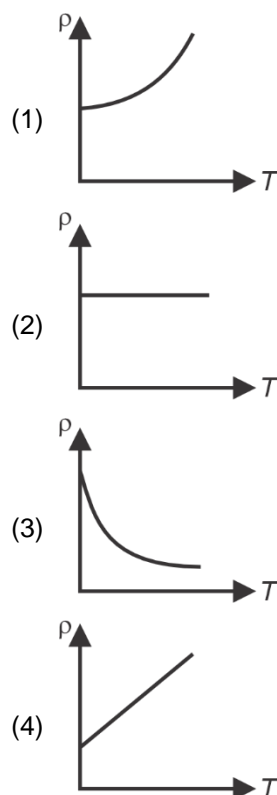
11. A capacitor is charged by battery to charge Q_1 . Now the battery is disconnected and dielectric slab of dielectric constant K is inserted between the gaps of the plates. Now charge on capacitor is Q_2 . Find $\frac{Q_1}{Q_2}$.

- (1) 1 (2) $\frac{1}{2}$
 (3) 2 (4) $\frac{2}{3}$

Answer (1)

Sol. $\frac{Q_1}{Q_2} = 1$ (No further charge is supplied)

12. Which of the following graphs correctly represents the variation of resistivity (ρ) with temperature (T).



Answer (1)

Sol. The resistivity of conductors increases with increase in temperature non-linearly.

13. If whole YDSE apparatus is immersed in a liquid of refractive index μ , then what is the effect on fringe width?

- (1) Fringe width increases
 (2) Fringe width decreases
 (3) Fringe width remains unchanged
 (4) It may increase on one side and decrease on other side

Answer (2)

Sol. $\Delta\omega = \frac{\lambda D}{\lambda}$

So, for RI of μ

$$\Delta\omega' = \frac{\lambda D}{\mu d}$$

14. Two spherical black bodies of radius 0.8 m and 0.2 m are at temperatures of 400 K and 800 K respectively. Find ratio of rate of heat loss.

- (1) 8
 (2) 4
 (3) 2
 (4) 1

Answer (4)

Sol. $P_1 = \sigma 4\pi (0.8)^2 (400)^4$

$$P_2 = \sigma 4\pi (0.2)^2 (800)^4$$

$$\frac{P_1}{P_2} = \frac{4 \times 4}{2^4} = 1$$



Delivering Champions Consistently



Medical | IIT-JEE | Foundations

JEE (Advanced) 2024



AIR 25
Rishi Shekher Shukla
2 Year Classroom



AIR 67
Krishna Sai Shishir
2 Year Classroom



AIR 78
Abhishek Jain
2 Year Classroom



AIR 93
Hardik Aggarwal
2 Year Classroom



AIR 95
Ujjwal Singh
2 Year Classroom



AIR 98
Rachit Aggarwal
2 Year Classroom

JEE (Main) 2024



AIR 1
Sanvi Jain
2 Year Classroom

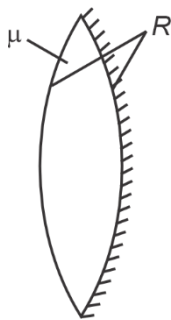


AIR 15
M Sai Divya Teja Reddy
2 Year Classroom



AIR 19
Rishi Shekher Shukla
2 Year Classroom

15. The equiconvex lens shown in figure is silvered on one side. For what distance of object from the lens is the image formed on the object itself?



- (1) μR (2) $\frac{R}{\mu}$
(3) $\frac{R}{2\mu - 1}$ (4) $\frac{R}{2\mu - 2}$

Answer (3)

Sol. Silvering of lens

$$\begin{aligned} \frac{1}{F_{eq}} &= \frac{1}{f_m} - \frac{2}{f_l} & \frac{1}{f_l} &= (\mu - 1) \left(\frac{1}{R} - \left(\frac{1}{-R} \right) \right) \\ &= \frac{-2}{R} - \frac{4(\mu - 1)}{R} & \frac{1}{f_l} &= \frac{2(\mu - 1)}{R} \\ &= \frac{-2(1 + 2\mu - 2)}{R} \\ F &= \frac{-R}{2(2\mu - 1)} \end{aligned}$$

For object-image to coincide distance should be $2f$

$$|u| = 2|F|$$

$$= \frac{R}{2\mu - 1}$$

16. Light of wavelength 550 nm is incident on surfaces of cerium and lithium. Work function are respectively 1.9 eV and 2.5 eV. Then electron will be ejected from

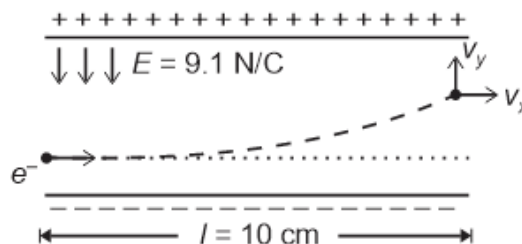
- (1) Cerium only (2) Lithium only
(3) From both of them (4) None of them

Answer (1)

$$\text{Sol. } E(\text{eV}) = \frac{1240}{\lambda(\text{nm})} = \frac{1240}{550} \approx 2.25$$

$2.25 > 1.9$ for cerium only

17. The figure shows an electron entering the space between the plates of a parallel plate capacitor with an initial velocity, $v_x = 10^6$ m/s parallel to the plates. If the length of plates is $l = 10$ cm and the electric field in the region $E = 9.1$ N/C, then the value of v_y when the electron comes out of the plates is (Electronic mass = 9.1×10^{-31} kg)



- (1) 1.6×10^4 m/s (2) 1.6×10^5 m/s
(3) 1.6×10^7 m/s (4) 1.6×10^3 m/s

Answer (2)

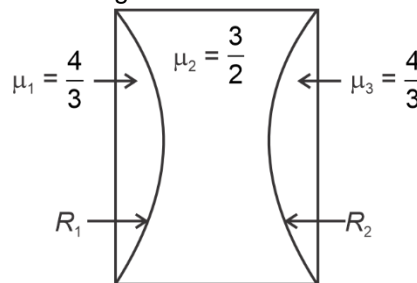
Sol. Time inside the electric field, $t = \frac{l}{v_x}$

Acceleration of electron along y-axis, $a = \frac{eE}{m}$

Velocity $v_y = at$

$$\begin{aligned} &= \frac{eE}{m} \cdot \frac{l}{v_x} \\ &= \frac{1.6 \times 10^{-19} \times 9.1 \times 10 \times 10^{-2}}{9.1 \times 10^{-31} \times 10^6} \text{ m/s} \\ &= 1.6 \times 10^5 \text{ m/s} \end{aligned}$$

18. Find the equivalent power of the thin lens combination shown in the figure.



- (1) $+\left(\frac{R_1 + R_2}{R_1 R_2}\right)$ (2) $-\left(\frac{R_1 + R_2}{R_1 R_2}\right)$
(3) $-\left(\frac{R_1 + R_2}{6R_1 R_2}\right)$ (4) $+\left(\frac{R_1 + R_2}{6R_1 R_2}\right)$

Delivering Champions Consistently

Aakash
Medical | IIT-JEE | Foundations

JEE (Advanced) 2024						JEE (Main) 2024		
 AIR 25 Rishi Shekher Shukla 2 Year Classroom	 AIR 67 Krishna Sai Shishir 2 Year Classroom	 AIR 78 Abhishek Jain 2 Year Classroom	 AIR 93 Hardik Aggarwal 2 Year Classroom	 AIR 95 Ujjwal Singh 2 Year Classroom	 AIR 98 Rohit Aggarwal 2 Year Classroom	 100 PERCENTILE Sanvi Jain 2 Year Classroom	 AIR 15 M Sai Divya Teja Reddy 2 Year Classroom	 AIR 19 Rishi Shekher Shukla 2 Year Classroom

Answer (3)**Sol.** Net power = $P_1 + P_2 + P_3$

$$\begin{aligned}
 &= \frac{(\mu_1 - 1)}{R_1} + (\mu_2 - 1) \left(\frac{1}{-R_1} + \frac{1}{-R_2} \right) + \frac{(\mu_3 - 1)}{R_2} \\
 &= \frac{(\mu_1 - \mu_2)}{R_1} + \frac{(\mu_3 - \mu_2)}{R_2} \\
 &= \left(\frac{4}{3} - \frac{3}{2} \right) \frac{1}{R_1} + \left(\frac{4}{3} - \frac{3}{2} \right) \frac{1}{R_2} \\
 &= -\frac{1}{6} \left(\frac{1}{R_1} + \frac{1}{R_2} \right) \\
 &= -\left(\frac{R_1 + R_2}{6R_1R_2} \right)
 \end{aligned}$$

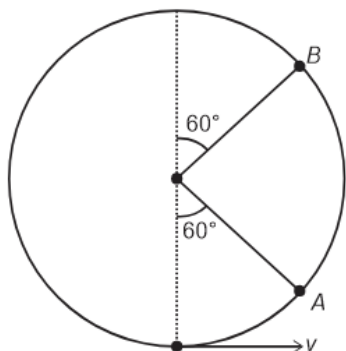
19.

20.

SECTION - B

Numerical Value Type Questions: This section contains 5 Numerical based questions. The answer to each question should be rounded-off to the nearest integer.

21. The particle shown in figure is just able to complete the vertical circular motion. Find the ratio of kinetic energy at A to the kinetic energy at B.

**Answer (2)**

Sol. $v = \sqrt{5gR}$

$$KE_A = \frac{1}{2}mv^2 - mg\frac{R}{2}$$

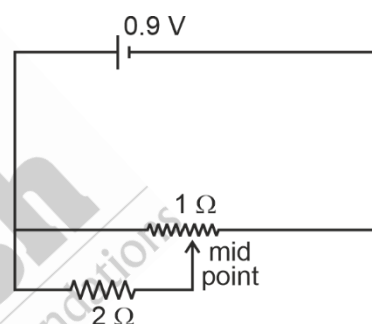
$$KE_A = 2mgR$$

$$KE_B = \frac{1}{2}mv^2 - mg\left(\frac{3R}{2}\right)$$

$$= mgR$$

$$\frac{KE_A}{KE_B} = 2$$

22. The current drawn from battery in the circuit shown below is _____ A

**Answer (1)**

Sol. $\frac{1}{R'} = \frac{1}{2} + 2 = \frac{5}{2}$

$$\Rightarrow R' = \frac{2}{5} \Omega$$

$$\text{Now, } R = \frac{2}{5} + \frac{1}{2} = \frac{9}{10} \Omega$$

$$\text{So, } I = \frac{9 \times 10}{10 \times 9} = 1 \text{ A}$$

23.

24.

25.


Delivering Champions Consistently

JEE (Advanced) 2024						JEE (Main) 2024		
 AIR 25 Rishi Shekher Shukla 2 Year Classroom	 AIR 67 Krishna Sai Shishir 2 Year Classroom	 AIR 78 Abhishek Jain 2 Year Classroom	 AIR 93 Hardik Aggarwal 2 Year Classroom	 AIR 95 Ujjwal Singh 2 Year Classroom	 AIR 98 Rachit Aggarwal 2 Year Classroom	 AIR 1 Sanvi Jain 2 Year Classroom	 AIR 15 M Sai Divya Teja Reddy 2 Year Classroom	 AIR 19 Rishi Shekher Shukla 2 Year Classroom