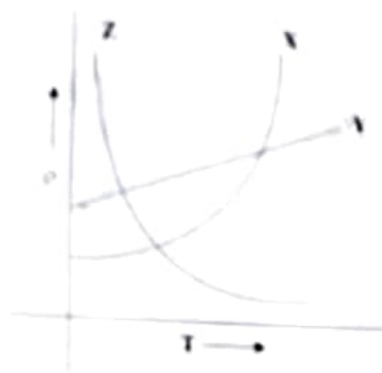


1. The variations of resistivity  $\rho$  with absolute temperature  $T$  for three different materials X, Y and Z are shown in the graph below. Identify the materials X, Y and Z.

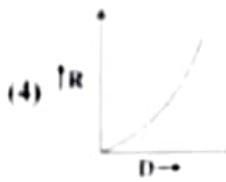
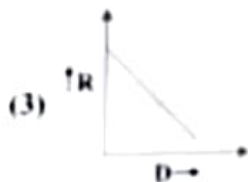
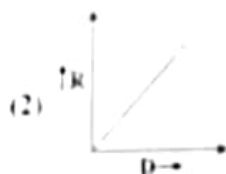
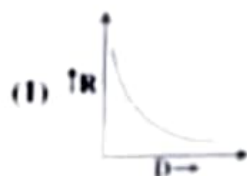


- (1) X – nichrome, Y – copper, Z – semiconductor
- (2) X – copper, Y – nichrome, Z – semiconductor
- (3) X – copper, Y – semiconductor, Z – nichrome
- (4) X – semiconductor, Y – nichrome, Z – copper

2. Given, a current carrying wire of non-uniform cross-section, which of the following is constant throughout the length of wire?

- (1) Current only
- (2) Current, electric field and drift speed
- (3) Drift speed
- (4) Current and drift speed

3. The graph between variation of resistance of a wire as a function of its diameter keeping other parameters like length and temperature constant is



SPACE FOR ROUGH WORK

4. Two thin long parallel wires separated by a distance 'r' from each other in vacuum carry a current of 1 ampere in opposite directions. Then, they will
- Repel each other with a force per unit length of  $\frac{\mu_0 I^2}{2\pi r^2}$
  - Attract each other with a force per unit length of  $\frac{\mu_0 I^2}{2\pi r^2}$
  - Attract each other with a force per unit length of  $\frac{\mu_0 I^2}{2\pi r}$
  - Repel each other with a force per unit length of  $\frac{\mu_0 I^2}{2\pi r}$
5. A solenoid is 1 m long and 4 cm in diameter. It has five layers of windings of 1000 turns each and carries a current of 7A. The magnetic field at the centre of the solenoid is
- $43.96 \times 10^{-2} \text{ T}$
  - 439.6 T
  - $0.4396 \times 10^{-4} \text{ T}$
  - $4.396 \times 10^{-2} \text{ T}$
6. Two similar galvanometers are converted into an ammeter and a milliammeter. The shunt resistance of ammeter as compared to the shunt resistance of milliammeter will be
- Less
  - Equal
  - Zero
  - More
7. Which of the following statements is true in respect of diamagnetic substances?
- Susceptibility decreases with temperature.
  - Susceptibility is small and negative
  - They are feebly attracted by magnets
  - Permeability is greater than 1000

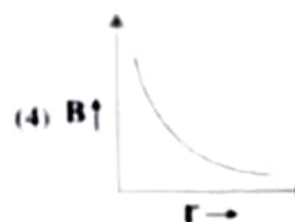
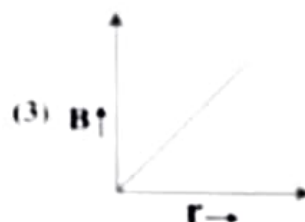
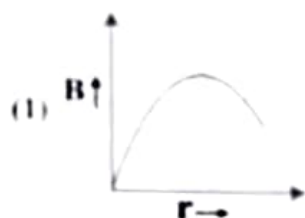
---

SPACE FOR ROUGH WORK

8. Identify the correct statement

- (1) The direction of magnetic field due to a current element is given by Flemings Left Hand Rule
- (2) The magnetic field inside a solenoid is non-uniform
- (3) A current carrying conductor produces an electric field around it.
- (4) A straight current carrying conductor has circular magnetic field lines around it.

9. Which of the following graphs represents the variation of magnetic field  $B$  with perpendicular distance ' $r$ ' from an infinitely long, straight conductor carrying current?



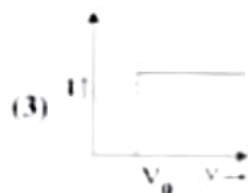
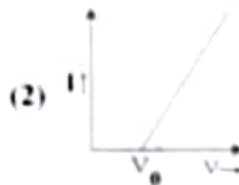
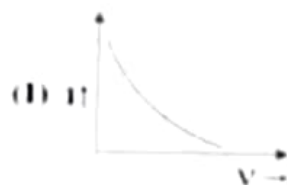
10. If we consider an electron and a photon having same de-Broglie wavelength, then they will have same

- (1) Velocity
- (2) Momentum
- (3) Angular momentum
- (4) Energy

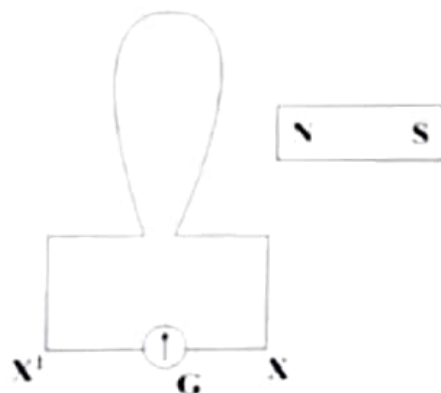
---

SPACE FOR ROUGH WORK

11. The anode voltage of a photocell is kept fixed. The frequency of the light falling on the cathode is gradually increased. Then the correct graph which shows the variation of photo current  $I$  with the frequency  $\nu$  of incident light is



12. When a bar magnet is pushed towards the coil, along its axis, as shown in the figure, the galvanometer pointer deflects towards X. When this magnet is pulled away from the coil, the galvanometer pointer



(1) oscillates

(2) deflects towards X

(3) deflects towards X'

(4) does not deflect

13. A square loop of side 2m lies in the Y-Z plane in a region having a magnetic field

$\vec{B} = (5\hat{i} + 3\hat{j} - 4\hat{k})\text{T}$ . The magnitude of magnetic flux through the square loop is

(1) 16 Wb

(2) 10 Wb

(3) 20 Wb

(4) 12 Wb

SPACE FOR ROUGH WORK

14. In domestic electric mains supply, the voltage and the current are
- DC voltage and AC current
  - AC voltage and AC current
  - AC voltage and DC current
  - DC voltage and DC current
15. A sinusoidal voltage produced by an AC generator at any instant  $t$  is given by an equation  $V = 311 \sin 314 t$ . The rms value of voltage and frequency are respectively
- 220 V, 50 Hz
  - 200 V, 100 Hz
  - 200 V, 50 Hz
  - 220 V, 100 Hz
16. A series LCR circuit containing an AC source of 100 V has an inductor and a capacitor of reactances  $24 \Omega$  and  $16 \Omega$  respectively. If a resistance of  $6 \Omega$  is connected in series, then the potential difference across the series combination of inductor and capacitor only is
- 8 V
  - 40 V
  - 80 V
  - 400 V
17. Match the following types of waves with their wavelength ranges

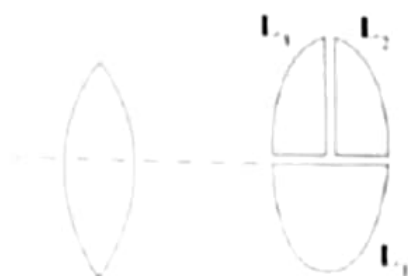
Waves		Wavelength ranges	
i.	Microwave	(a)	700 nm to 400 nm
ii.	Visible light	(b)	1 nm to $10^{-1}$ nm
iii.	Ultraviolet	(c)	0.1 m to 1 mm
iv.	X-rays	(d)	400 nm to 1 nm

- i - b, ii - c, iii - a, iv - d
  - i - a, ii - d, iii - b, iv - c
  - i - c, ii - a, iii - d, iv - b
  - i - d, ii - b, iii - c, iv - a
18. A ray of light passes from vacuum into a medium of refractive index  $n$ . If the angle of incidence is twice the angle of refraction, then the angle of incidence in terms of refractive index is
- $2\sin^{-1}\left(\frac{n}{2}\right)$
  - $\cos^{-1}\left(\frac{n}{2}\right)$
  - $\sin^{-1}\left(\frac{n}{2}\right)$
  - $2\cos^{-1}\left(\frac{n}{2}\right)$

---

SPACE FOR ROUGH WORK

19. A convex lens has power  $P$ . It is cut into two halves along its principal axis. Further one piece (out of two halves) is cut into two halves perpendicular to the principal axis as shown in figure. Choose the incorrect option for the reported lens pieces



- (1) Power of  $L_1$  is P

(3) Power of  $L_2$  is  $\frac{P}{2}$

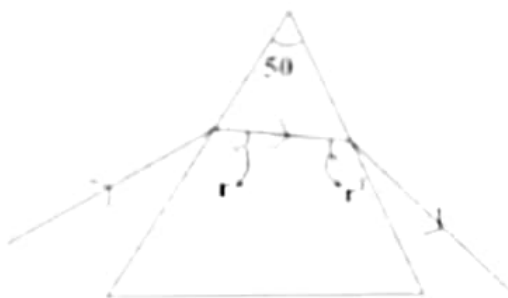
(2) Power of  $L_1$  is  $\frac{P}{2}$

(4) Power of  $L_1$  is  $\frac{P}{2}$

20. The image formed by an objective lens of a compound microscope is

- (1) Virtual and enlarged
- (2) Virtual and diminished
- (3) Real and diminished
- (4) Real and enlarged

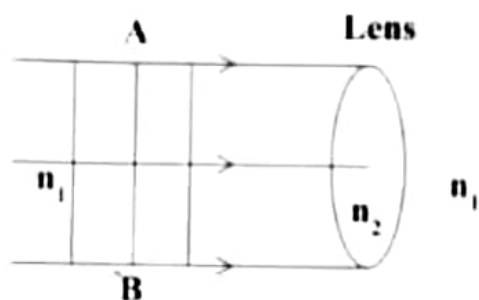
21. If  $r$  and  $r'$  denote the angles inside the prism having angle of prism  $50^\circ$  considering that during interval of time from  $t = 0$  to  $t = t$ ,  $r$  varies with time as  $r = 10^\circ + t^2$ . During this time  $r'$  will vary with time as



- $$\begin{array}{ll} (1) \ 50^{\ominus} + t^{\ominus} & (2) \ 40^{\ominus} - t^{\ominus} \\ (3) \ 40^{\ominus} + t^{\ominus} & (4) \ 50^{\ominus} - t^{\ominus} \end{array}$$

**SPACE FOR ROUGH WORK**

22. If AB is incident plane wave front then refracted wave front is ( $n_2 > n_1$ )



- (1)
- (2)
- (3)
- (4)

23. The total energy carried by the light wave when it travels from a rarer to a non-reflecting and non-absorbing medium

- (1) either increases or decreases depending upon angle of incidence  
 (2) decreases  
 (3) remains same  
 (4) increases

24. If the radius of first Bohr orbit is  $r$ , then the radius of the second Bohr orbit will be

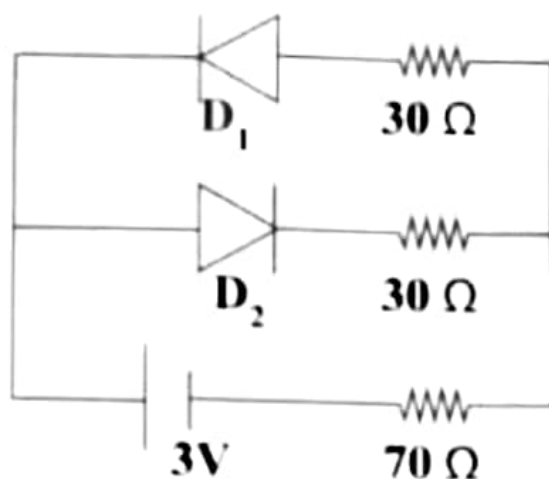
- (1)  $2\sqrt{2} r$  (2)  $2r$   
 (3)  $8r$  (4)  $4r$

SPACE FOR ROUGH WORK





29. The circuit shown in the figure contains two ideal diodes  $D_1$  and  $D_2$ . If a cell of emf 3 V and negligible internal resistance is connected as shown, then the current through  $70\ \Omega$  resistance (in ampere) is



- (1) 0.03  
(2) 0  
(3) 0.01  
(4) 0.02
30. In determining the refractive index of a glass slab using a travelling microscope, the following readings are tabulated.
- (a) Reading of travelling microscope for ink mark = 5.123 cm  
(b) Reading of travelling microscope for ink mark through glass slab = 6.123 cm  
(c) Reading of travelling microscope for chalk dust on glass slab = 8.123 cm

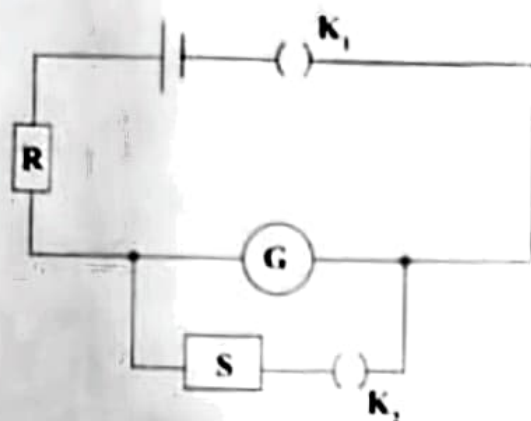
From the data, the refractive index of a glass slab is

- (1) 1.399  
(2) 1.390  
(3) 1.500  
(4) 1.601

SPACE FOR ROUGH WORK

Q. 30  
1.399

31. In an experiment to determine the figure of merit of a galvanometer by half deflection method, a student constructed the following circuit.



He unplugged a resistance of  $5200\ \Omega$  in  $R$ . When  $K_1$  is closed and  $K_2$  is open, the deflection observed in the galvanometer is 26 div. When  $K_2$  is also closed and a resistance of  $90\ \Omega$  is removed in  $S$ , the deflection becomes 13 div. The resistance of galvanometer is nearly

- (1)  $91.6\ \Omega$  (2)  $116.0\ \Omega$   
(3)  $45.0\ \Omega$  (4)  $103.0\ \Omega$

32. While determining the coefficient of viscosity of the given liquid, a spherical steel ball sinks by a distance  $h = 0.9\text{ m}$ . The radius of the ball is  $r = \sqrt{3} \times 10^{-3}\text{ m}$ . The time taken by the ball to sink in three trials are tabulated as follows.

Trial No.	Time taken by the ball to fall by $h$ (in second)
1.	2.75
2.	2.65
3.	2.70

The difference between the densities of the steel ball and the liquid is  $7000\text{ kg m}^{-3}$ . If  $g = 10.0\text{ ms}^{-2}$ , then the coefficient of viscosity of the given liquid at room temperature is

- (1)  $14\text{ Pa.s}$  (2)  $0.28\text{ Pa.s}$   
(3)  $0.14\text{ Pa.s}$  (4)  $0.14 \times 10^{-3}\text{ Pa.s}$

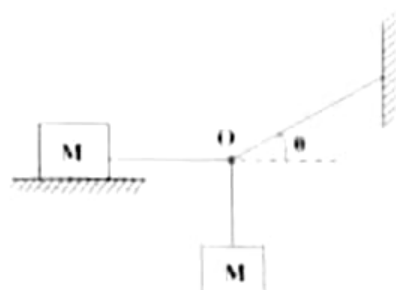
SPACE FOR ROUGH WORK

33. Which of the following expressions can be deduced on the basis of dimensional analysis?  
(All symbols have their usual meanings)
- (1)  $F = 6\pi\eta rv$
- (2)  $s = ut + \frac{1}{2}at^2$
- (3)  $x = A \cos \omega t$
- (4)  $N = N_0 e^{\lambda t}$
34. Two stones begin to fall from rest from the same height, with the second stone starting to fall ' $\Delta t$ ' seconds after the first falls from rest. The distance of separation between the two stones becomes ' $H$ ', ' $t_0$ ' seconds after the first stone starts its motion. Then  $t_0$  is equal to
- (1)  $\frac{H}{g\Delta t} + \frac{\Delta t}{2}$
- (2)  $\frac{H}{g\Delta t}$
- (3)  $\frac{H}{\Delta t} + \frac{\Delta t}{2g}$
- (4)  $\frac{H}{g\Delta t} - \frac{\Delta t}{2}$
35. In the projectile motion of a particle on a level ground, which of the following remains constant with reference to time and position?
- (1) Angle between the instantaneous velocity with the horizontal
- (2) Vertical component of the velocity of the projectile
- (3) Average velocity between any two points on the path
- (4) Horizontal component of velocity
36. A particle is in uniform circular motion. The equation of its trajectory is given by  $(x - 2)^2 + y^2 = 25$ , where  $x$  and  $y$  are in meter. The speed of the particle is  $2 \text{ ms}^{-1}$ . When the particle attains the lowest ' $y$ ' co-ordinate, the acceleration of the particle is (in  $\text{ms}^{-2}$ )
- (1)  $0.8 \hat{j}$
- (2)  $0.4 \hat{i}$
- (3)  $0.4 \hat{j}$
- (4)  $0.8 \hat{i}$

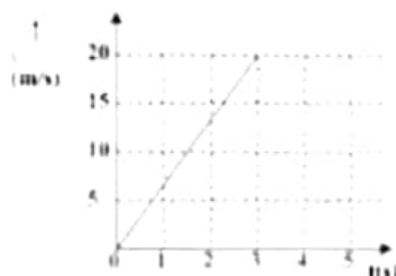
---

SPACE FOR ROUGH WORK

37. A wooden block of mass  $M$  lies on a rough floor. Another wooden block of the same mass is hanging from the point  $O$  through strings as shown in the figure. To achieve equilibrium, the co-efficient of static friction between the block on the floor with the floor itself is



- (1)  $\mu = \tan \theta$  (2)  $\mu = \cos \theta$   
 (3)  $\mu = \cot \theta$  (4)  $\mu = \sin \theta$
38. A block of certain mass is placed on a rough floor. The coefficients of static and kinetic friction between the block and the floor are 0.4 and 0.25 respectively. A constant horizontal force  $F = 20 \text{ N}$  acts on it so that the velocity of the block varies with time according to the following graph. The mass of the block is nearly (Take  $g \approx 10 \text{ ms}^{-2}$ )



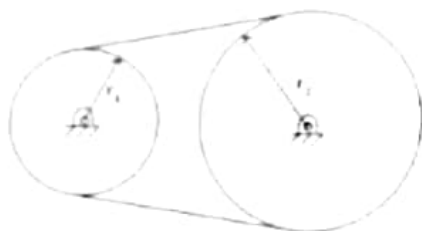
- (1) 1.0 kg (2) 2.2 kg  
 (3) 4.4 kg (4) 1.2 kg
39. A body of mass 0.25 kg travels along a straight line from  $x = 0$  to  $x = 2 \text{ m}$  with a speed  $v = k x^{3/2}$  where  $k = 2 \text{ SI units}$ . The work done by the net force during this displacement is
- (1) 32 J (2) 4 J  
 (3) 8 J (4) 16 J

SPACE FOR ROUGH WORK

5.17  
 8.17  
 11.17

40. During an elastic collision between two bodies, which of the following statements are correct?
- The initial kinetic energy is equal to the final kinetic energy of the system.
  - The linear momentum is conserved.
  - The kinetic energy during  $\Delta t$  (the collision time) is not conserved.
- (1) I, II and III (2) I and II only  
(3) II and III only (4) I and III only
41. Three particles of mass 1 kg, 2 kg and 3 kg are placed at the vertices A, B and C respectively of an equilateral triangle ABC of side 1 m. The centre of mass of the system from vertex A (located at origin) is
- (1)  $\left(\frac{7}{12}, \frac{6+3\sqrt{3}}{12}\right)$  (2) (0,0)  
(3)  $\left(\frac{7}{12}, \frac{3\sqrt{3}}{12}\right)$  (4)  $\left(\frac{9}{12}, \frac{3\sqrt{3}}{12}\right)$
42. Two fly wheels are connected by a non-slipping belt as shown in the figure.  $I_1 = 4 \text{ kg m}^2$ ,  $r_1 = 20 \text{ cm}$ ,  $I_2 = 20 \text{ kg m}^2$  and  $r_2 = 30 \text{ cm}$ . A torque of 10 Nm is applied on the smaller wheel. Then match the entries of column I with appropriate entries of column II.

I	Quantities	II	Their numerical values (in SI units)
(a)	Angular acceleration of smaller wheel	(i)	$\frac{5}{3}$
(b)	Torque on the larger wheel	(ii)	$\frac{100}{3}$
(c)	Angular acceleration of larger wheel	(iii)	$\frac{5}{2}$



- (1) a – ii, b – i, c – iii (2) a – iii, b – ii, c – i  
(3) a – ii, b – iii, c – i (4) a – iii, b – i, c – ii

SPACE FOR ROUGH WORK

43. If  $r_p, v_p, L_p$  and  $r_a, v_a, L_a$  are radii, velocities and angular momenta of a planet at perihelion and aphelion of its elliptical orbit around the Sun respectively, then

- (1)  $r_p > r_a, v_p < v_a, L_p = L_a$
- (2)  $r_p < r_a, v_p < v_a, L_p < L_a$
- (3)  $r_p > r_a, v_p > v_a, L_p > L_a$
- (4)  $r_p < r_a, v_p > v_a, L_p = L_a$

44. The total energy of a satellite in a circular orbit at a distance  $(R + h)$  from the center of the Earth varies as

[ $R$  is the radius of the Earth and  $h$  is the height of the orbit from Earth's surface]

- (1)  $-\frac{1}{(R + h)^2}$
- (2)  $-\frac{1}{(R + h)}$
- (3)  $-\frac{1}{(R + h)}$
- (4)  $-\frac{1}{(R + h)^2}$

45. Two wires A and B are made of same material. Their diameters are in the ratio of 1:2 and lengths are in the ratio of 1:3. If they are stretched by the same force, then increase in their lengths will be in the ratio of

- (1) 3 : 2
- (2) 4 : 3
- (3) 3 : 4
- (4) 2 : 3

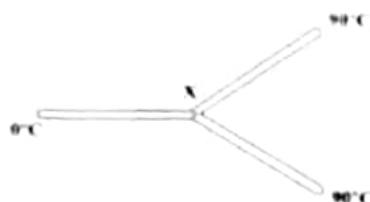
46. A horizontal pipe carries water in a streamlined flow. At a point along the pipe, where the cross-sectional area is  $10 \text{ cm}^2$ , the velocity of water is  $1 \text{ ms}^{-1}$  and the pressure is  $2000 \text{ Pa}$ . What is the pressure of water at another point where the cross-sectional area is  $5 \text{ cm}^2$ ?

[Density of water =  $1000 \text{ kgm}^{-3}$ ]

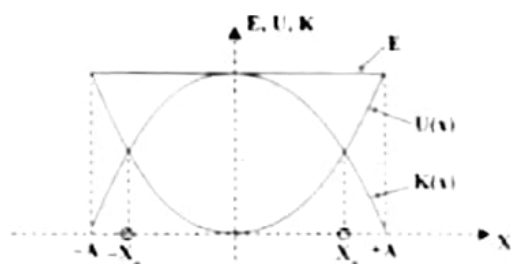
- (1) 500 Pa
- (2) 200 Pa
- (3) 300 Pa
- (4) 400 Pa

SPACE FOR ROUGH WORK

47. Three metal rods of the same material and identical in all respects are joined as shown in the figure. The temperatures at the ends of these rods are maintained as indicated. Assuming no heat energy loss occurs through the curved surfaces of the rods, the temperature at the junction  $x$  is



- (1)  $20^{\circ}\text{C}$  (2)  $45^{\circ}\text{C}$   
 (3)  $60^{\circ}\text{C}$  (4)  $30^{\circ}\text{C}$
48. A gas is taken from state A to state B along two different paths 1 and 2. The heat absorbed and work done by the system along these two paths are  $Q_1$  and  $Q_2$  and  $W_1$  and  $W_2$  respectively. Then
- (1)  $Q_1 + W_1 = Q_2 + W_2$  (2)  $Q_1 = Q_2$   
 (3)  $W_1 = W_2$  (4)  $Q_1 - W_1 = Q_2 - W_2$
49. At  $27^{\circ}\text{C}$  temperature, the mean kinetic energy of the atoms of an ideal gas is  $E_1$ . If the temperature is increased to  $327^{\circ}\text{C}$ , then the mean kinetic energy of the atoms will be
- (1)  $2E_1$  (2)  $\frac{E_1}{2}$   
 (3)  $\frac{E_1}{\sqrt{2}}$  (4)  $\sqrt{2} E_1$
50. The variations of kinetic energy  $K(x)$ , potential energy  $U(x)$  and total energy as a function of displacement of a particle in SHM is as shown in the figure. The value of  $|x_0|$  is



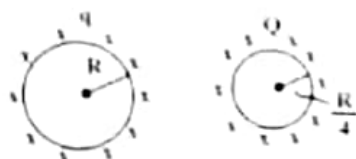
- (1)  $\sqrt{2} A$  (2)  $\frac{A}{2}$   
 (3)  $2A$  (4)  $\frac{A}{\sqrt{2}}$

SPACE FOR ROUGH WORK

51. The angle between the particle velocity and wave velocity in a transverse wave is [except when the particle passes through the mean position]

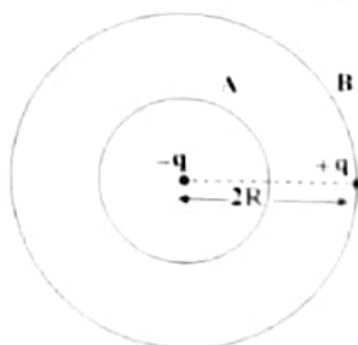
- (1)  $\pi$  radian (2) Zero radian  
(3)  $\frac{\pi}{4}$  radian (4)  $\frac{\pi}{2}$  radian

52. A metallic sphere of radius  $R$  carrying a charge  $q$  is kept at certain distance from another metallic sphere of radius  $R/4$  carrying a charge  $Q$ . What is the electric flux at any point inside the metallic sphere of radius  $R$  due to the sphere of radius  $R/4$ ?



- (1)  $\frac{q}{\epsilon_0} - \frac{Q}{\epsilon_0}$  (2)  $\frac{Q}{\epsilon_0}$   
(3)  $\frac{Q}{\epsilon_0} - \frac{q}{\epsilon_0}$  (4) Zero

53. You are given a dipole of charge  $+q$  and  $-q$  separated by a distance  $2R$ . A sphere 'A' of radius ' $R$ ' passes through the centre of the dipole as shown below and another sphere 'B' of radius ' $2R$ ' passes through the charge  $+q$ . Then the electric flux through the sphere A is



- (1)  $2q / \epsilon_0$  (2)  $-q / \epsilon_0$   
(3)  $q / \epsilon_0$  (4) Zero

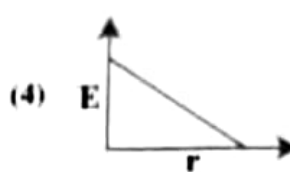
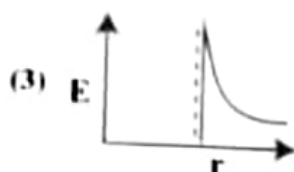
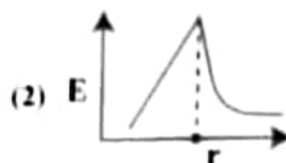
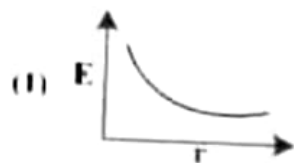
54. A potential at a point A is  $-3$  V and that at another point B is  $5$  V. What is the work done in carrying a charge of  $5$  m C from B to A?

- (1)  $-4$  J (2)  $-40$  J  
(3)  $-0.04$  J (4)  $-0.4$  J

SPACE FOR ROUGH WORK



55. Charges are uniformly spread on the surface of a conducting sphere. The electric field from the centre of sphere to a point outside the sphere varies with distance  $r$  from the centre as



56. Match Column-I with Column-II related to an electric dipole of dipole moment  $\vec{p}$  that is placed in a uniform electric field  $\vec{E}$ .

Column - I Angle between $\vec{p}$ and $\vec{E}$	Column - II Potential energy of the dipole
a) $180^\circ$	i) $-pE$
b) $120^\circ$	ii) $pE$
c) $90^\circ$	iii) $\frac{1}{2} pE$
	iv) Zero

(1) a - ii, b - i, c - iv

(2) a - ii, b - iii, c - iv

(3) a - i, b - ii, c - iii

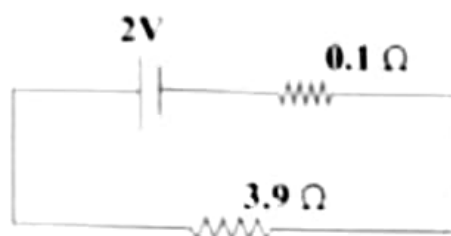
(4) a - ii, b - iii, c - i

57. Which of the following statements is not true?

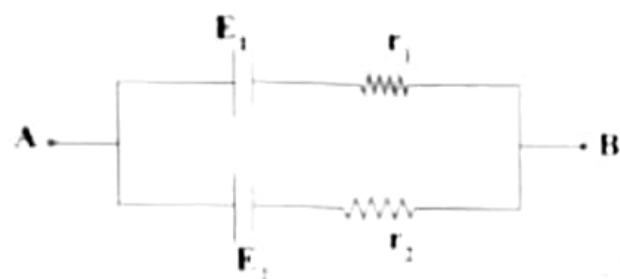
- (1) Equipotential surfaces for a uniform electric field are parallel and equidistant from each other.
- (2) Electric field is always perpendicular to an equipotential surface.
- (3) Work done to move a charge on an equipotential surface is not zero
- (4) Equipotential surfaces are the surfaces where the potential is constant

SPACE FOR ROUGH WORK

58. Which of the following is a correct statement?
- (1) Gauss's law does not hold good for a charge situated outside the Gaussian surface.
  - (2) Gauss's law is true for any closed surface
  - (3) Gauss's law is true for any open surface
  - (4) Gauss's law is not applicable when charges are not symmetrically distributed over a closed surface.
59. In the following circuit, the terminal voltage across the cell is



- (1) 2.71 V
  - (2) 0.52 V
  - (3) 1.68 V
  - (4) 1.95 V
60. Two cells of emfs  $E_1$  and  $E_2$  and internal resistances  $r_1$  and  $r_2$  ( $E_2 > E_1$  and  $r_2 > r_1$ ) respectively, are connected in parallel as shown in figure. The equivalent emf of the combination is  $E_{eq}$ . Then



- (1)  $E_{eq} < E_1$
- (2)  $E_1 < E_{eq} < E_2$  and  $E_{eq}$  is nearer  $E_1$
- (3)  $E_1 < E_{eq} < E_2$  and  $E_{eq}$  is nearer  $E_2$
- (4)  $E_{eq} > E_2$

SPACE FOR ROUGH WORK