

# Andhra Pradesh State Council of Higher Education

## Notations :

- 1.Options shown in green color and with ✓ icon are correct.
- 2.Options shown in red color and with ✗ icon are incorrect.

<b>Question Paper Name :</b>	AP ICET 2020 11th Sep 2020 Shift 2
<b>Subject Name :</b>	AP ICET 2020
<b>Creation Date :</b>	2020-09-11 18:17:39
<b>Duration :</b>	150
<b>Total Marks :</b>	200
<b>Display Marks:</b>	No
<b>Share Answer Key With Delivery Engine :</b>	Yes
<b>Actual Answer Key :</b>	Yes
<b>Calculator :</b>	None
<b>Magnifying Glass Required? :</b>	No
<b>Ruler Required? :</b>	No
<b>Eraser Required? :</b>	No
<b>Scratch Pad Required? :</b>	No
<b>Rough Sketch/Notepad Required? :</b>	No
<b>Protractor Required? :</b>	No
<b>Show Watermark on Console? :</b>	Yes
<b>Highlighter :</b>	No
<b>Auto Save on Console? :</b>	Yes

## AP ICET 2020

<b>Group Number :</b>	1
<b>Group Id :</b>	51035711
<b>Group Maximum Duration :</b>	0
<b>Group Minimum Duration :</b>	150
<b>Show Attended Group? :</b>	No
<b>Edit Attended Group? :</b>	No
<b>Break time :</b>	0
<b>Group Marks :</b>	200
<b>Is this Group for Examiner? :</b>	No
<b>Revisit allowed for group Instructions? :</b>	Yes
<b>Maximum Instruction Time :</b>	0
<b>Minimum Instruction Time :</b>	0

## Analytics Ability

<b>Section Id :</b>	51035731
<b>Section Number :</b>	1
<b>Section type :</b>	Online
<b>Mandatory or Optional :</b>	Mandatory
<b>Number of Questions :</b>	36
<b>Number of Questions to be attempted :</b>	36
<b>Section Marks :</b>	75
<b>Display Number Panel :</b>	Yes
<b>Group All Questions :</b>	Yes
<b>Mark As Answered Required? :</b>	Yes
<b>Sub-Section Number :</b>	1
<b>Sub-Section Id :</b>	510357131
<b>Question Shuffling Allowed :</b>	Yes

Question Id : 5103572091 Question Type : COMPREHENSION Sub Question Shuffling Allowed :

Yes Group Comprehension Questions : No

Question Numbers : (1 to 20)

Question Label : Comprehension

### Data Sufficiency దత్తాంశ పర్యాప్తత

Note: In the following 20 questions each question is followed by data in the form of two statements labeled as I and II. You must decide whether the data given in the statements are sufficient to answer the questions. Using the data make an appropriate choice from (1) to (4) as per the following guidelines:

- Mark choice (1) if the statement I alone is sufficient to answer the question.
- Mark choice (2) if the statement II alone is sufficient to answer the question.
- Mark choice (3) if both the statements I and II are sufficient to answer the question but neither statement alone is sufficient.
- Mark (4) if both the statements I and II together are not sufficient to answer the question and additional data is required.

సూచన: క్రింద ఇచ్చిన 20 ప్రశ్నలలో ప్రతి ప్రశ్నలోను ఒక ప్రశ్న , దాని కింద I, II అని గుర్తులు గల రెండు ప్రవచనాలు

దత్తాంశంగా ఇవ్వబడ్డాయి. ఇచ్చిన దత్తాంశం ఉపయోగించి , ఇచ్చిన ప్రవచనాలు ప్రశ్నకు సమాధానాన్ని ఇచ్చేందుకు

పర్యప్తాలు అవుతాయా లేదా అని మీరు నిర్ధారించాలి. ఈ నిర్ధారణకు క్రింది మార్గదర్శక సూత్రాలు ఉపయోగించి (1) నుండి

(4) వరకు సరి అయిన జవాబును ఎంపిక చెయ్యండి

- ప్రశ్నకు సమాధానం ఇచ్చేందుకు ప్రవచనం I మాత్రమే పర్యాప్తమయితే మీ జవాబు (1) గా గుర్తించండి .
- ప్రశ్నకు సమాధానం ఇచ్చేందుకు ప్రవచనం II మాత్రమే పర్యాప్తమయితే మీ జవాబు (2) గా గుర్తించండి.
- ప్రశ్నకు సమాధానం ఇచ్చేందుకు ప్రవచనాలు I, II కలిసి పర్యాప్తమయ్యి అందులో ఏ ఒక్కటి కూడా పర్యాప్తం కాకపోతే మీ జవాబు (3) గా గుర్తించండి.
- ప్రశ్నకు సమాధానం ఇచ్చేందుకు ప్రవచనాలు I, II కలిసి కూడా పర్యాప్తం కాక అదనపు దత్తాంశం అవసరం అయితే మీ జవాబు (4) గా గుర్తించండి.

### Sub questions

Question Number : 1 Question Id : 5103572092 Question Type : MCQ Option Shuffling : Yes

Display Question Number : Yes Is Question Mandatory : No Single Line Question Option : No

**Option Orientation : Vertical**

**Correct Marks : 1 Wrong Marks : 0**

What is the perimeter of  $\Delta ABC$ ?

$\Delta ABC$  యొక్క చుట్టుకోలత ఎంత?

I.  $\Delta ABC$  is an equilateral triangle

$\Delta ABC$  సమబాహు త్రిభుజము

II. Area of  $\Delta ABC$  is  $4\sqrt{3}$  sq.cms

$\Delta ABC$  యొక్క వైశాల్యం  $4\sqrt{3}$  చ.సం.మీ.

**Options :**

1. ✖ 1

2. ✖ 2

3. ✔ 3

4. ✖ 4

**Question Number : 2 Question Id : 5103572093 Question Type : MCQ Option Shuffling : Yes**

**Display Question Number : Yes Is Question Mandatory : No Single Line Question Option : No**

**Option Orientation : Vertical**

**Correct Marks : 1 Wrong Marks : 0**

What is the digit in the unit's place of a six digit positive integer?

ఆరు అంకెల ధన పూర్ణాంకంలో ఒకట్ల స్థానంలో అంకె ఎంత?

I.  $n$  leaves the remainder 7 when divided by 10

$n$  ను 10 తో భాగాహారం చేసినప్పుడు శేషము 7

II.  $n$  is divisible by 7

7 తో  $n$  భాగింప బడుతుంది.

**Options :**

1. ✔ 1

2. ✖ 2

3. ✖ 3

4. ✖ 4

Question Number : 3 Question Id : 5103572094 Question Type : MCQ Option Shuffling : Yes  
Display Question Number : Yes Is Question Mandatory : No Single Line Question Option : No  
Option Orientation : Vertical

Correct Marks : 1 Wrong Marks : 0

Who is the tallest among A, B, C and D?

A , B , C, D లలో అత్యంత పొడగరి ఎవరు?

I. A is taller than B but shorter than C

B కంటే A పొడవు కాని C కంటే పొట్టి

II. D is taller than B but shorter than A

B కంటే D పొడవు కాని A కంటే పొట్టి

Options :

1. ✖ 1

2. ✖ 2

3. ✔ 3

4. ✖ 4

Question Number : 4 Question Id : 5103572095 Question Type : MCQ Option Shuffling : Yes  
Display Question Number : Yes Is Question Mandatory : No Single Line Question Option : No  
Option Orientation : Vertical

Correct Marks : 1 Wrong Marks : 0

If A and B are two non empty sets what are the elements in B?

A , B లు రెండు శూన్యేతర సమితులయితే B లోని మూలకాలు ఏవి?

I.  $A \cap B = \{1,2,3,4,5,6,7\}$

II.  $A-B = \{8,9,10,11,12,13\}$

Options :

1. ✖ 1

2. ✖ 2

3. ✖ 3

4. ✔ 4

Question Number : 5 Question Id : 5103572096 Question Type : MCQ Option Shuffling : Yes  
Display Question Number : Yes Is Question Mandatory : No Single Line Question Option : No  
Option Orientation : Vertical

Correct Marks : 1 Wrong Marks : 0

What is the present age of the son?

కుమారుని ప్రస్తుత వయస్సు ఎంత ?

I. The sum of the present ages of the father and the son is 45

తండ్రి కొడుకుల ప్రస్తుత వయస్సుల మొత్తం 45

II. Five years ago the father's age was 6 times the age of the son

ఐదేళ్ళ క్రితం కుమారుడి వయస్సుకు తండ్రి వయస్సు 6 రెట్లు.

Options :

1. ✖ 1

2. ✖ 2

3. ✔ 3

4. ✖ 4

Question Number : 6 Question Id : 5103572097 Question Type : MCQ Option Shuffling : Yes  
Display Question Number : Yes Is Question Mandatory : No Single Line Question Option : No  
Option Orientation : Vertical

Correct Marks : 1 Wrong Marks : 0

What is the average weight of the four students A, B, C and D?

నలుగురు విద్యార్థులు A, B, C, D ల సగటు బరువు ఎంత?

I. Average weight of A, B and C is 64 kg

A, B, C ల సగటు బరువు 64 కి.గ్రా

II. Average weight of B, C and D is 66 kg.

B, C, D ల సగటు బరువు 66 కి.గ్రా

**Options :**

1. ✘ 1

2. ✘ 2

3. ✘ 3

4. ✔ 4

**Question Number : 7 Question Id : 5103572098 Question Type : MCQ Option Shuffling : Yes Display Question Number : Yes Is Question Mandatory : No Single Line Question Option : No Option Orientation : Vertical**

**Correct Marks : 1 Wrong Marks : 0**

When was Amar born?

అమర్ ఎప్పుడు పుట్టాడు?

I. Amar is older than Ram who was born on August 20, 1996.

ఆగస్టు 20, 1996 నాడు పుట్టిన రామ్ కంటే అమర్ పెద్దవాడు

II. Amar will be 45 years old on 15<sup>th</sup> August, 2020.

ఆగస్టు 15, 2020కు అమర్ కు 45 సంవత్సరాలు వస్తాయి.

**Options :**

1. ✘ 1

2. ✔ 2

3. ✘ 3

4. ✘ 4

Question Number : 8 Question Id : 5103572099 Question Type : MCQ Option Shuffling : Yes  
Display Question Number : Yes Is Question Mandatory : No Single Line Question Option : No  
Option Orientation : Vertical

Correct Marks : 1 Wrong Marks : 0

What is the speed of that train?

ఆ రైలు వేగం ఎంత?

I. The train is 40 meters long.

ఆ రైలు పొడవు 40 మీటర్లు

II. The train takes 40 minutes to travel between 2 stations A and B.

రెండు స్టేషన్లు A మరియు B మధ్య ప్రయాణానికి ఆ రైలుకు 40 నిమిషాలు పడుతుంది.

Options :

1. ✘ 1

2. ✘ 2

3. ✘ 3

4. ✔ 4

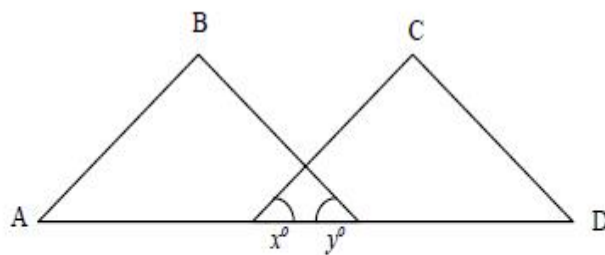
Question Number : 9 Question Id : 5103572100 Question Type : MCQ Option Shuffling : Yes  
Display Question Number : Yes Is Question Mandatory : No Single Line Question Option : No  
Option Orientation : Vertical

Correct Marks : 1 Wrong Marks : 0

What is  $\angle A + \angle B + \angle C + \angle D$  in the following figure?

ఈ పటం లో  $\angle A + \angle B + \angle C +$

$\angle D$  ఎంత?



I.  $x + y = 90^\circ$

II.  $\angle A + \angle B = \angle C + \angle D$

Options :

1. ✓ 1

2. ✘ 2

3. ✘ 3

4. ✘ 4

**Question Number : 10 Question Id : 5103572101 Question Type : MCQ Option Shuffling : Yes Display Question Number : Yes Is Question Mandatory : No Single Line Question Option : No Option Orientation : Vertical**

**Correct Marks : 1 Wrong Marks : 0**

How many days are needed for A to complete a piece of work?

ఆ పనిని పూర్తి చేయడానికి A కు ఎన్ని రోజులు కావాలి

I. A and B require 20 days to complete the work

A, B లకు ఆ పనిని పూర్తి చేయడానికి 20 రోజులు కావాలి

II. A takes 10 days more than B to complete the work

ఆ పనిని పూర్తి చేయడానికి B కంటే A 10రోజులు ఎక్కువ తీసుకుంటాడు.

**Options :**

1. ✘ 1

2. ✘ 2

3. ✓ 3

4. ✘ 4

**Question Number : 11 Question Id : 5103572102 Question Type : MCQ Option Shuffling : Yes Display Question Number : Yes Is Question Mandatory : No Single Line Question Option : No Option Orientation : Vertical**

**Correct Marks : 1 Wrong Marks : 0**

If  $115 < m < 125$ , then what is the positive integer  $m$ ?

115 < m < 125 అయితే, ఆ ధన పూర్ణాంకం m ఏది?

I.  $m$  leaves remainder 2 when divided by 4

m ను 4 తో భాగించినప్పుడు శేషం 2

II.  $m+3$  is a multiple of 11

m+3 అనేది 11 యొక్క ఒక గుణకము

**Options :**

1. ✖ 1

2. ✔ 2

3. ✖ 3

4. ✖ 4

**Question Number : 12 Question Id : 5103572103 Question Type : MCQ Option Shuffling : Yes Display Question Number : Yes Is Question Mandatory : No Single Line Question Option : No Option Orientation : Vertical**

**Correct Marks : 1 Wrong Marks : 0**

What are the sides of right angled triangle?

లంబ కోణ త్రిభుజము యొక్క భుజములు ఏవి?

I. The perimeter of the triangle is 60 cm

ఆ త్రిభుజపు చుట్టుకొలత 60 సెం.మీ

II. The difference between the height and the base is 14 cm.

ఆ త్రిభుజపు ఎత్తు, భూమిల భేదం 14 సెం.మీ

**Options :**

1. ✖ 1

2. ✖ 2

3. ✔ 3

4. ✖ 4

Question Number : 13 Question Id : 5103572104 Question Type : MCQ Option Shuffling : Yes  
Display Question Number : Yes Is Question Mandatory : No Single Line Question Option : No  
Option Orientation : Vertical

Correct Marks : 1 Wrong Marks : 0

Is  $x + y$  a positive integer?

$x+y$  ధన పూర్ణాంకమా?

I.  $x+3$  is equal to the larger root of  $x^2 - 16 = 0$

$x^2 - 16 = 0$  యొక్క మూలాలలో  $x + 3$  పెద్దది

II.  $y+3$  is the real root of  $x^3 + 27 = 0$

$x^3 + 27 = 0$  యొక్క వాస్తవ మూలం  $y + 3$

Options :

1. ✖ 1

2. ✖ 2

3. ✔ 3

4. ✖ 4

Question Number : 14 Question Id : 5103572105 Question Type : MCQ Option Shuffling : Yes  
Display Question Number : Yes Is Question Mandatory : No Single Line Question Option : No  
Option Orientation : Vertical

Correct Marks : 1 Wrong Marks : 0

Is the angle A of the triangle ABC acute?

త్రిభుజం ABC లో A అక్షు కోణమా?

I. ABC is a right angled triangle

ABC అంభకోణ త్రిభుజం

II.  $\angle B = 90^\circ$

Options :

1. ✖ 1

2. ✔ 2

3. ✖ 3

4. ✖ 4

**Question Number : 15 Question Id : 5103572106 Question Type : MCQ Option Shuffling : Yes Display Question Number : Yes Is Question Mandatory : No Single Line Question Option : No Option Orientation : Vertical**

**Correct Marks : 1 Wrong Marks : 0**

What is the average of 5 real numbers a, b, c, d, e?

ఐదు వాస్తవ సంఖ్యలు a,b,c,d,e ల సగటు ఎంత?

I.  $a + e = 20$

II. a, b, c, d, e are in A.P

a,b,c,d,e లు అంక శ్రేణిలో ఉన్నాయి

**Options :**

1. ✖ 1

2. ✖ 2

3. ✔ 3

4. ✖ 4

**Question Number : 16 Question Id : 5103572107 Question Type : MCQ Option Shuffling : Yes Display Question Number : Yes Is Question Mandatory : No Single Line Question Option : No Option Orientation : Vertical**

**Correct Marks : 1 Wrong Marks : 0**

What is the share of A in the profit in a business at the end of the year when there are three partners A, B and C in the business?

A, B, C లు భాగస్వాములుగా ఉన్న ఒక వ్యాపారంలో సంవత్సరాంత లాభంలో A యొక్క వాటా ఎంత?

I. The total profit in the business at the end of the year is Rs. 10,000

ఆ వ్యాపారంలో మొత్తం సంవత్సరాంత లాభం రూ. 10,000

II. A's capital in the business is twice that of B.

ఆ వ్యాపారంలో A పెట్టుబడి B పెట్టుబడికి రెట్టింపు

**Options :**

1. ✖ 1

2. ✖ 2

3. ✖ 3

4. ✔ 4

**Question Number : 17 Question Id : 5103572108 Question Type : MCQ Option Shuffling : Yes Display Question Number : Yes Is Question Mandatory : No Single Line Question Option : No Option Orientation : Vertical**

**Correct Marks : 1 Wrong Marks : 0**

If A is a set with 15 elements and P is a subset of A, then what is the number of subsets of A which are disjoint with P.

15 మూలకాలు ఉన్న సమితి A యొక్క ఉప సమితి P అయితే, P తో వియుక్త మయ్యే A లోని ఉపసమితులు ఎన్ని

I. P has less than 7 elements

Pలో 7 కంటే తక్కువ మూలకాలు ఉన్నాయి.

II. The largest subset of A which is disjoint from P has 10 elements

P తో వియుక్తమయ్యే A యొక్క ఉపసమితులలో అతి పెద్దదైన దానిలో 10 మూలకాలు ఉన్నాయి.

**Options :**

1. ✖ 1

2. ✔ 2

3. ✖ 3

4. ✖ 4

Question Number : 18 Question Id : 5103572109 Question Type : MCQ Option Shuffling : Yes  
Display Question Number : Yes Is Question Mandatory : No Single Line Question Option : No  
Option Orientation : Vertical

Correct Marks : 1 Wrong Marks : 0

What is the number of common tangents to the two circles?

రెండు వృత్తాలకు ఉమ్మడి స్పర్శరేఖల సంఖ్య ఎంత

I. The number of points common to the two circles is 0.

రెండు వృత్తాలకు ఉమ్మడి బిందువుల సంఖ్య సున్న

II. The radii of the two circles are in the ratio 3: 4

రెండు వృత్తాల వ్యాసార్థాలు 3:4 నిష్పత్తిలో ఉన్నాయి

Options :

1. ✖ 1

2. ✖ 2

3. ✖ 3

4. ✔ 4

Question Number : 19 Question Id : 5103572110 Question Type : MCQ Option Shuffling : Yes  
Display Question Number : Yes Is Question Mandatory : No Single Line Question Option : No  
Option Orientation : Vertical

Correct Marks : 1 Wrong Marks : 0

Is the function  $f$  an odd function?

ప్రమేయం  $f$  టేసి ప్రమేయమా?

I.  $f(-2) = f(2)$

II.  $f(-3) = -f(3)$

Options :

1. ✖ 1

2. ✖ 2

3. ✖ 3

4. ✔ 4

Question Number : 20 Question Id : 5103572111 Question Type : MCQ Option Shuffling : Yes  
Display Question Number : Yes Is Question Mandatory : No Single Line Question Option : No  
Option Orientation : Vertical

Correct Marks : 1 Wrong Marks : 0

Is the positive integer  $n$  a prime?

ధన పూర్ణాంకం  $n$  ప్రధాన సంఖ్యా?

I.  $n^3$  has at least four divisors

$n^3$  కు కనీసం నాలుగు భాజకాలు ఉన్నాయి

II.  $n^2$  has exactly three divisors

$n^2$  కు ఖచ్చితంగా మూడు భాజకాలు ఉన్నాయి

Options :

1. ✖ 1

2. ✔ 2

3. ✖ 3

4. ✖ 4

Sub-Section Number :

2

Sub-Section Id :

510357132

Question Shuffling Allowed :

Yes

Question Id : 5103572112 Question Type : COMPREHENSION Sub Question Shuffling Allowed :

Yes Group Comprehension Questions : No

Question Numbers : (21 to 30)

Question Label : Comprehension

Problem Solving సమస్య సాధన

Sequences and Series అనుక్రమాలు, శ్రేణులు

**Note:** In each of the Following 10 questions a sequence of numbers or letters that follow a definite pattern is given. Each question has a blank space. This has to be filled by the correct answer from the four given options to complete the sequence without breaking the pattern.

**సూచన:** క్రింద ఇచ్చిన 10 ప్రశ్నలలో ప్రతి ప్రశ్నలోను ఇచ్చిన సంఖ్యలు గాని అక్షరాలు కాని ఒక క్రమబద్ధమైన నియమాన్ని పాటిస్తున్నాయి. ప్రతి ప్రశ్నలోని ఖాళీని ఇచ్చిన నాలుగు ఐచ్ఛికాల నుండి సరి అయిన జవాబును ఎన్నుకుని అనుక్రమ నియమానికి భంగం కలుగకుండా పూరించాలి.

**Sub questions**

Question Number : 21 Question Id : 5103572113 Question Type : MCQ Option Shuffling : Yes

Display Question Number : Yes Is Question Mandatory : No Single Line Question Option : No

Option Orientation : Vertical

Correct Marks : 1 Wrong Marks : 0

Sunday: Monday :: \_\_\_\_\_ : August

**Options :**

1. ✘ June

2. ✔ July

3. ✘ September

4. ✘ October

Question Number : 22 Question Id : 5103572114 Question Type : MCQ Option Shuffling : Yes  
Display Question Number : Yes Is Question Mandatory : No Single Line Question Option : No  
Option Orientation : Vertical

Correct Marks : 1 Wrong Marks : 0

Country : \_\_\_\_\_ :: Human Body: White Blood cells

Options :

1. ✘ People
2. ✘ Politicians
3. ✔ Army
4. ✘ Ambulance

Question Number : 23 Question Id : 5103572115 Question Type : MCQ Option Shuffling : Yes  
Display Question Number : Yes Is Question Mandatory : No Single Line Question Option : No  
Option Orientation : Vertical

Correct Marks : 1 Wrong Marks : 0

49:13::81:\_\_\_\_\_

Options :

1. ✘ 15
2. ✘ 19
3. ✔ 17
4. ✘ 21

Question Number : 24 Question Id : 5103572116 Question Type : MCQ Option Shuffling : Yes  
Display Question Number : Yes Is Question Mandatory : No Single Line Question Option : No  
Option Orientation : Vertical

Correct Marks : 1 Wrong Marks : 0

11:156::13:\_\_\_\_\_

Options :

1. ✘ 185

2. ✘ 200

3. ✘ 205

4. ✔ 210

Question Number : 25 Question Id : 5103572117 Question Type : MCQ Option Shuffling : Yes  
Display Question Number : Yes Is Question Mandatory : No Single Line Question Option : No  
Option Orientation : Vertical

Correct Marks : 1 Wrong Marks : 0

\_\_\_\_\_ : Temperature :: Barometer : Pressure

Options :

1. ✘ Furnace

2. ✔ Thermometer

3. ✘ Flask

4. ✘ Centigrade

Question Number : 26 Question Id : 5103572118 Question Type : MCQ Option Shuffling : Yes

Display Question Number : Yes Is Question Mandatory : No Single Line Question Option : No

Option Orientation : Vertical

Correct Marks : 1 Wrong Marks : 0

BET : YIG :: JIW : \_\_\_\_\_

Options :

1. ✘ PED

2. ✘ QOF

3. ✔ QOD

4. ✘ PEF

Question Number : 27 Question Id : 5103572119 Question Type : MCQ Option Shuffling : Yes

Display Question Number : Yes Is Question Mandatory : No Single Line Question Option : No

Option Orientation : Vertical

Correct Marks : 1 Wrong Marks : 0

MARKET : JISLEQ :: PENCIL : \_\_\_\_\_

Options :

1. ✔ BOKNIM

2. ✘ NIMBOK

3. ✘ DOMQIP

4. ✘ QIPDOM

Question Number : 28 Question Id : 5103572120 Question Type : MCQ Option Shuffling : Yes  
Display Question Number : Yes Is Question Mandatory : No Single Line Question Option : No  
Option Orientation : Vertical

Correct Marks : 1 Wrong Marks : 0

LEARN:56 :: PURSE: \_\_\_\_\_

Options :

1. ✘ 79

2. ✘ 94

3. ✔ 105

4. ✘ 125

Question Number : 29 Question Id : 5103572121 Question Type : MCQ Option Shuffling : Yes  
Display Question Number : Yes Is Question Mandatory : No Single Line Question Option : No  
Option Orientation : Vertical

Correct Marks : 1 Wrong Marks : 0

PET : 64 :: RIN : \_\_\_\_\_

Options :

1. ✘ 80

2. ✘ 48

3. ✘ 35

4. ✓ 28

Question Number : 30 Question Id : 5103572122 Question Type : MCQ Option Shuffling : Yes  
Display Question Number : Yes Is Question Mandatory : No Single Line Question Option : No  
Option Orientation : Vertical

Correct Marks : 1 Wrong Marks : 0

BRING :HPESC :: \_\_\_\_\_:QNOVT

Options :

1. ✘ SPEND

2. ✓ STUMP

3. ✘ SPERM

4. ✘ STAMP

Sub-Section Number : 3

Sub-Section Id : 510357133

Question Shuffling Allowed : Yes

Question Number : 31 Question Id : 5103572123 Question Type : MCQ Option Shuffling : Yes  
Display Question Number : Yes Is Question Mandatory : No Single Line Question Option : No  
Option Orientation : Vertical

Correct Marks : 1 Wrong Marks : 0

In the Following questions pick the odd thing out.

క్రింద ఇచ్చిన ప్రశ్నలలో సరి పోనిది గుర్తించుము

Options :

1. ✘  $x^3 - 8 = 0$

2. ✘  $x^3 - 27 = 0$

3. ✘  $x^3 - 64 = 0$

4. ✔  $x^3 - 625 = 0$

Question Number : 32 Question Id : 5103572124 Question Type : MCQ Option Shuffling : Yes  
Display Question Number : Yes Is Question Mandatory : No Single Line Question Option : No  
Option Orientation : Vertical

Correct Marks : 1 Wrong Marks : 0

In the Following questions pick the odd thing out.

క్రింద ఇచ్చిన ప్రశ్నలలో సరి పోనిది గుర్తించుము

Options :

1. ✘  $\begin{vmatrix} 1 & 2 & 4 \\ 2 & 4 & 8 \\ 3 & 5 & 7 \end{vmatrix}$

2. ✘  $\begin{vmatrix} 1 & 3 & 9 \\ 2 & 6 & 18 \\ 3 & 7 & 14 \end{vmatrix}$

3. ✘  $\begin{vmatrix} 0 & 1 & 1 \\ 0 & 2 & 2 \\ 3 & 5 & 7 \end{vmatrix}$

4. ✔  $\begin{vmatrix} 0 & 1 & 2 \\ 2 & 3 & 5 \\ 3 & 4 & 6 \end{vmatrix}$

Question Number : 33 Question Id : 5103572125 Question Type : MCQ Option Shuffling : Yes  
Display Question Number : Yes Is Question Mandatory : No Single Line Question Option : No  
Option Orientation : Vertical

Correct Marks : 1 Wrong Marks : 0

In the Following questions pick the odd thing out.

క్రింద ఇచ్చిన ప్రశ్నలలో సరి పోనిది గుర్తించుము

Options :

1. ✓ Fish

2. ✗ Frog

3. ✗ Crocodile

4. ✗ Tortoise

Question Number : 34 Question Id : 5103572126 Question Type : MCQ Option Shuffling : Yes  
Display Question Number : Yes Is Question Mandatory : No Single Line Question Option : No  
Option Orientation : Vertical

Correct Marks : 1 Wrong Marks : 0

In the Following questions pick the odd thing out.

క్రింద ఇచ్చిన ప్రశ్నలలో సరి పోనిది గుర్తించుము

Options :

1. ✗ CGK

2. ✓ BEI

3. ✗ AEI

4. ✖ DHL

Question Number : 35 Question Id : 5103572127 Question Type : MCQ Option Shuffling : Yes  
Display Question Number : Yes Is Question Mandatory : No Single Line Question Option : No  
Option Orientation : Vertical

Correct Marks : 1 Wrong Marks : 0

In the Following questions pick the odd thing out.

క్రింద ఇచ్చిన ప్రశ్నలలో సరి పోనిది గుర్తించుము

Options :

1. ✖ D14X

2. ✔ F10R

3. ✖ H12P

4. ✖ J15T

Question Number : 36 Question Id : 5103572128 Question Type : MCQ Option Shuffling : Yes  
Display Question Number : Yes Is Question Mandatory : No Single Line Question Option : No  
Option Orientation : Vertical

Correct Marks : 1 Wrong Marks : 0

Note: The following questions follow a definite pattern. Observe the same and fill in the blanks with suitable answers.

గమనిక: క్రింద ఇచ్చిన ప్రశ్నలు ఒక ఖచ్చితమయిన నియమాన్ని పాటిస్తున్నాయి. ఆ నియమాన్ని గమనించి సరియగు సమాధానాలతో ఖాళీలను పూరించండి.

7, 13, 31, 57, 133, \_\_\_\_\_

**Options :**

1. ✘ 153

2. ✘ 159

3. ✔ 183

4. ✘ 209

**Question Number : 37 Question Id : 5103572129 Question Type : MCQ Option Shuffling : Yes Display Question Number : Yes Is Question Mandatory : No Single Line Question Option : No Option Orientation : Vertical**

**Correct Marks : 1 Wrong Marks : 0**

**Note:** The following questions follow a definite pattern. Observe the same and fill in the blanks with suitable answers.

**గమనిక:** క్రింద ఇచ్చిన ప్రశ్నలు ఒక ఖచ్చితమయిన నియమాన్ని పాటిస్తున్నాయి. ఆ నియమాన్ని గమనించి సరియగు సమాధానాలతో ఖాళీలను పూరించండి.

2, 7, 17, 32, 52, 77, 107, \_\_\_\_\_

**Options :**

1. ✘ 127

2. ✔ 142

3. ✘ 152

4. ✘ 157

Question Number : 38 Question Id : 5103572130 Question Type : MCQ Option Shuffling : Yes  
Display Question Number : Yes Is Question Mandatory : No Single Line Question Option : No  
Option Orientation : Vertical

Correct Marks : 1 Wrong Marks : 0

Note: The following questions follow a definite pattern. Observe the same and fill in the blanks with suitable answers.

గమనిక: క్రింద ఇచ్చిన ప్రశ్నలు ఒక ఖచ్చితమయిన నియమాన్ని పాటిస్తున్నాయి. ఆ నియమాన్ని గమనించి సరియగు సమాధానాలతో ఖాళీలను పూరించండి.

16, 36, 100, 144, \_\_\_\_\_

Options :

1. ✘ 289

2. ✔ 256

3. ✘ 288

4. ✘ 324

Question Number : 39 Question Id : 5103572131 Question Type : MCQ Option Shuffling : Yes  
Display Question Number : Yes Is Question Mandatory : No Single Line Question Option : No  
Option Orientation : Vertical

Correct Marks : 1 Wrong Marks : 0

Note: The following questions follow a definite pattern. Observe the same and fill in the blanks with suitable answers.

గమనిక: క్రింద ఇచ్చిన ప్రశ్నలు ఒక ఖచ్చితమయిన నియమాన్ని పాటిస్తున్నాయి. ఆ నియమాన్ని గమనించి సరియగు సమాధానాలతో ఖాళీలను పూరించండి.

$\frac{1}{6}, \frac{1}{2}, \frac{5}{6}, 1\frac{1}{6}, 1\frac{1}{2},$  \_\_\_\_\_

Options :

1. ✘  $1\frac{1}{3}$

2. ✘  $1\frac{2}{3}$

3. ✘  $1\frac{4}{3}$

4. ✔  $1\frac{5}{6}$

**Question Number : 40 Question Id : 5103572132 Question Type : MCQ Option Shuffling : Yes Display Question Number : Yes Is Question Mandatory : No Single Line Question Option : No Option Orientation : Vertical**

**Correct Marks : 1 Wrong Marks : 0**

**Note:** The following questions follow a definite pattern. Observe the same and fill in the blanks with suitable answers.

**గమనిక:** క్రింద ఇచ్చిన ప్రశ్నలు ఒక ఖచ్చితమయిన నియమాన్ని పాటిస్తున్నాయి. ఆ నియమాన్ని గమనించి సరియగు సమాధానాలతో ఖాళీలను పూరించండి.

10, 30, 150, 1050, \_\_\_\_\_, 150150

**Options :**

1. ✔ 11550

2. ✘ 15500

3. ✘ 15650

4. ✘ 15670

Question Number : 41 Question Id : 5103572133 Question Type : MCQ Option Shuffling : Yes  
Display Question Number : Yes Is Question Mandatory : No Single Line Question Option : No  
Option Orientation : Vertical

Correct Marks : 1 Wrong Marks : 0

Note: The following questions follow a definite pattern. Observe the same and fill in the blanks with suitable answers.

గమనిక: క్రింద ఇచ్చిన ప్రశ్నలు ఒక ఖచ్చితమయిన నియమాన్ని పాటిస్తున్నాయి. ఆ నియమాన్ని గమనించి సరియగు సమాధానాలతో ఖాళీలను పూరించండి.

5, 12, 24, 36, 52, \_\_\_\_\_

Options :

1. ✓ 68

2. ✗ 66

3. ✗ 64

4. ✗ 62

Question Number : 42 Question Id : 5103572134 Question Type : MCQ Option Shuffling : Yes  
Display Question Number : Yes Is Question Mandatory : No Single Line Question Option : No  
Option Orientation : Vertical

Correct Marks : 1 Wrong Marks : 0

Note: The following questions follow a definite pattern. Observe the same and fill in the blanks with suitable answers.

గమనిక: క్రింద ఇచ్చిన ప్రశ్నలు ఒక ఖచ్చితమయిన నియమాన్ని పాటిస్తున్నాయి. ఆ నియమాన్ని గమనించి సరియగు సమాధానాలతో ఖాళీలను పూరించండి.

$16\frac{2}{3}, 18\frac{3}{4}, 21\frac{3}{7}, 25, 30, \underline{\hspace{2cm}}$

Options :

1. ✘ 35

2. ✔  $37\frac{1}{2}$

3. ✘  $39\frac{3}{4}$

4. ✘  $41\frac{2}{3}$

Question Number : 43 Question Id : 5103572135 Question Type : MCQ Option Shuffling : Yes  
Display Question Number : Yes Is Question Mandatory : No Single Line Question Option : No  
Option Orientation : Vertical

Correct Marks : 1 Wrong Marks : 0

Note: The following questions follow a definite pattern. Observe the same and fill in the blanks with suitable answers.

గమనిక: క్రింద ఇచ్చిన ప్రశ్నలు ఒక ఖచ్చితమయిన నియమాన్ని పాటిస్తున్నాయి. ఆ నియమాన్ని గమనించి సరియగు సమాధానాలతో ఖాళీలను పూరించండి.

5, 10, 26, 50, 122, \_\_\_\_\_

Options :

1. ✘ 194

2. ✘ 146

3. ✘ 138

4. ✔ 170

Question Number : 44 Question Id : 5103572136 Question Type : MCQ Option Shuffling : Yes  
Display Question Number : Yes Is Question Mandatory : No Single Line Question Option : No  
Option Orientation : Vertical

Correct Marks : 1 Wrong Marks : 0

Note: The following questions follow a definite pattern. Observe the same and fill in the blanks with suitable answers.

గమనిక: క్రింద ఇచ్చిన ప్రశ్నలు ఒక ఖచ్చితమయిన నియమాన్ని పాటిస్తున్నాయి. ఆ నియమాన్ని గమనించి సరియగు సమాధానాలతో ఖాళీలను పూరించండి.

18, 100, 294, 648, 1210, \_\_\_\_\_

Options :

1. ✘ 1664

2. ✘ 1772

3. ✘ 1914

4. ✔ 2028

Question Number : 45 Question Id : 5103572137 Question Type : MCQ Option Shuffling : Yes  
Display Question Number : Yes Is Question Mandatory : No Single Line Question Option : No  
Option Orientation : Vertical

Correct Marks : 1 Wrong Marks : 0

Note: The following questions follow a definite pattern. Observe the same and fill in the blanks with suitable answers.

గమనిక: క్రింద ఇచ్చిన ప్రశ్నలు ఒక ఖచ్చితమయిన నియమాన్ని పాటిస్తున్నాయి. ఆ నియమాన్ని గమనించి సరియగు సమాధానాలతో ఖాళీలను పూరించండి.

0010, 0011, 0101, 0111, 1011, \_\_\_\_\_

**Options :**

1. ✘ 1110

2. ✔ 1101

3. ✘ 1001

4. ✘ 1010

**Sub-Section Number :** 4

**Sub-Section Id :** 510357134

**Question Shuffling Allowed :** Yes

**Question Id : 5103572138 Question Type : COMPREHENSION Sub Question Shuffling Allowed :**

**Yes Group Comprehension Questions : No**

**Question Numbers : (46 to 48)**

**Question Label : Comprehension**

## Data Analysis

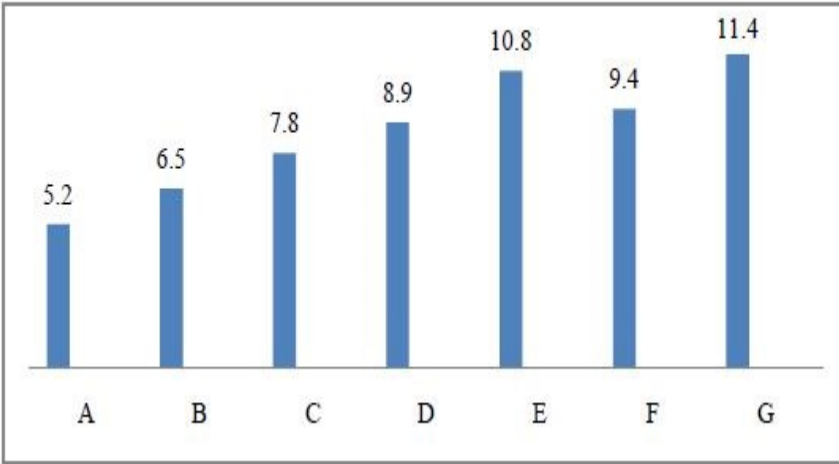
### దత్తాంశ విశ్లేషణ

#### Note

The exports of 7 companies (in crores of rupees) in an year are indicated in the following bar diagram in an alphabetical order. Based on this data answer the questions

#### సూచన

ఒక సంవత్సరంలో 7 సంస్థల ఎగుమతులు (కోట్ల రూ.లలో) అక్షరమాల క్రమంలో ఈ క్రింద బార్ పటంలో చూపడం అయింది. దీనిని ఆధారంగా చేసుకుని ఇచ్చిన ప్రశ్నలకు సమాధానం ఇవ్వండి.



#### Sub questions

Question Number : 46 Question Id : 5103572139 Question Type : MCQ Option Shuffling : Yes  
Display Question Number : Yes Is Question Mandatory : No Single Line Question Option : No  
Option Orientation : Vertical

Correct Marks : 1 Wrong Marks : 0

What is the average export (in crores of rupees) of all the companies put together in the year under review

ఆ సంవత్సరంలో అన్ని సంస్థల సగటు ఎగుమతి (కోట్ల రూ.లలో) ఎంత?

Options :

1. ✘  $9\frac{2}{7}$

2. ✔  $8\frac{4}{7}$

3. ✘  $7\frac{3}{7}$

4. ✘  $6\frac{5}{7}$

Question Number : 47 Question Id : 5103572140 Question Type : MCQ Option Shuffling : Yes  
Display Question Number : Yes Is Question Mandatory : No Single Line Question Option : No  
Option Orientation : Vertical

Correct Marks : 1 Wrong Marks : 0

What is the (approximate) percentage increase in the exports of G over that of F in the year under review? (corrected to one decimal place)

ఆ సంవత్సరంలో F యొక్క ఎగుమతులతో పోల్చితే G యొక్క ఎగుమతులు వృద్ధి శాతం సుమారుగా (ఒక దశ్యాంశమునకు సరిచేసి) ఎంత?

Options :

1. ✘ 19.5

2. ✘ 20.7

3. ✔ 21.3

4. ✘ 22.1

Question Number : 48 Question Id : 5103572141 Question Type : MCQ Option Shuffling : Yes  
Display Question Number : Yes Is Question Mandatory : No Single Line Question Option : No  
Option Orientation : Vertical

Correct Marks : 1 Wrong Marks : 0

Taken in the alphabetical order, which company has the maximum percentage increase over its predecessor company in the year under review?

ఆ సంవత్సరంలో అక్షరమాల క్రమంలో తీసుకుంటే ఏ సంస్థ దానికి ముందు ఉన్న సంస్థతో పోల్చితే అత్యధిక వృద్ధి శాతం కలిగి ఉంది?

**Options :**

1. ✖ F

2. ✖ C

3. ✖ D

4. ✔ B

**Sub-Section Number :**

5

**Sub-Section Id :**

510357135

**Question Shuffling Allowed :**

Yes

**Question Id : 5103572142 Question Type : COMPREHENSION Sub Question Shuffling Allowed :**

**Yes Group Comprehension Questions : No**

**Question Numbers : (49 to 53)**

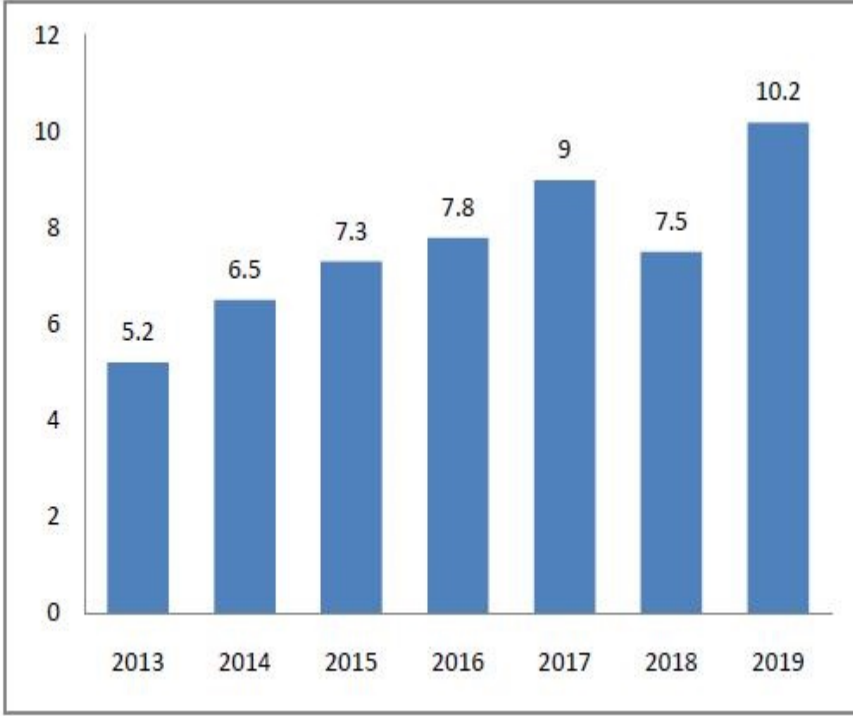
**Question Label : Comprehension**

## Note

The following bar diagram shows the income from the exports of cars in crores of rupees for the years 2013-2019. Study the bar diagram carefully and answer the questions

## సూచన

సంవత్సరాలు 2013-2019 లలో కార్ల ఎగుమతుల వల్ల వచ్చిన ఆదాయం (కోట్ల రూపాల్లో) ను ఈ క్రింద బార్ పటం చూపుతోంది. ఈ బార్ పటంను జాగ్రత్తగా పరిశీలించి క్రింద ఇచ్చిన ప్రశ్నలకు జవాబులు ఇవ్వండి



## Sub questions

Question Number : 49 Question Id : 5103572143 Question Type : MCQ Option Shuffling : Yes  
Display Question Number : Yes Is Question Mandatory : No Single Line Question Option : No  
Option Orientation : Vertical

Correct Marks : 1 Wrong Marks : 0

Which of the following pair of years has an average income of exactly 7 crores rupees?

ఈ క్రింది వాటిలో ఏ జత సంవత్సరాలలో సగటు ఆదాయం ఖచ్చితంగా 7 కోట్ల రూపాయలు.

Options :

1. ✘ 2015, 2016

2. ✘

2013, 2017

3. ✘ 2015, 2018

4. ✔ 2014, 2018

**Question Number : 50 Question Id : 5103572144 Question Type : MCQ Option Shuffling : Yes Display Question Number : Yes Is Question Mandatory : No Single Line Question Option : No Option Orientation : Vertical**

**Correct Marks : 1 Wrong Marks : 0**

The number of years in which the income is more than the average yearly income in the given period is

ఇచ్చిన కాలంలో సగటు వార్షికాదాయం కంటే అంటే ఎక్కువ ఆదాయం గల సంవత్సరాల సంఖ్య

**Options :**

1. ✘ 2

2. ✔ 3

3. ✘ 4

4. ✘ 5

**Question Number : 51 Question Id : 5103572145 Question Type : MCQ Option Shuffling : Yes Display Question Number : Yes Is Question Mandatory : No Single Line Question Option : No Option Orientation : Vertical**

**Correct Marks : 1 Wrong Marks : 0**

In which year the income from the exports is very nearer to the average of its preceeding and succeeding years.

ముందు వెనుక సంవత్సరాల సగటు ఆదాయానికి దగ్గర ఆదాయంకల సంవత్సరం ఏది?

**Options :**

1. ✘ 2014

2. ✔ 2015

3. ✘ 2016

4. ✘ 2017

**Question Number : 52 Question Id : 5103572146 Question Type : MCQ Option Shuffling : Yes Display Question Number : Yes Is Question Mandatory : No Single Line Question Option : No Option Orientation : Vertical**

**Correct Marks : 1 Wrong Marks : 0**

The percentage increase in the income from exports in the year 2017 over its previous year corrected to two decimal places is

2017 సంవత్సరంలో ఎగుమతులవల్ల వచ్చిన ఆదాయం అంతకు ముందు సంవత్సరంతో పోల్చితే వృద్ధి శాతం రెండు దశాంశలకు సవరిస్తే

**Options :**

1. ✘ 13.33

2. ✘ 14.27

3. ✔ 15.38

4. ✘ 16.41

**Question Number : 53 Question Id : 5103572147 Question Type : MCQ Option Shuffling : Yes Display Question Number : Yes Is Question Mandatory : No Single Line Question Option : No Option Orientation : Vertical**

**Correct Marks : 1 Wrong Marks : 0**

The percentage growth in the income from exports in year 2019 over the year 2013, corrected to two decimal places is

2013 సంవత్సరంతో పోల్చితే 2019లో ఎగుమతులపై వచ్చిన ఆదాయం వృద్ధి శాతం రెండు దశాంశలకు సవరిస్తే

**Options :**

1. ✘ 98.85

2. ✘ 97.23

3. ✘ 96.84

4. ✔ 96.15

**Sub-Section Number :** 6

**Sub-Section Id :** 510357136

**Question Shuffling Allowed :** Yes

**Question Id : 5103572148 Question Type : COMPREHENSION Sub Question Shuffling Allowed :**

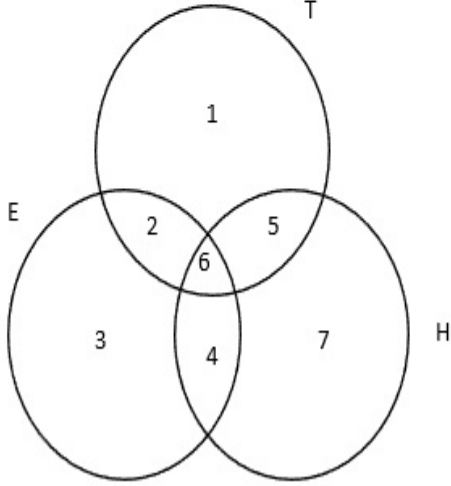
**Yes Group Comprehension Questions : No**

**Question Numbers : (54 to 55)**

**Question Label : Comprehension**

Each of the circle in the following Venn diagram represents people in a city speaking 3 languages Telugu (T) , English (E) and Hindi (H). Based on this data answer questions

ఈ క్రింది వెన్ పటంలోని ప్రతి వృత్తం ఆ నగరంలోని 3 భాషలు తెలుగు (T), హిందీ (H), మరియు ఇంగ్లీష్ (E) లను మాట్లాడేవారిని సూచిస్తుంది. దీనిని ఆధారంగా చేసుకుని క్రింద ఇచ్చిన ప్రశ్నలకు జవాబు ఇవ్వండి.



### Sub questions

Question Number : 54 Question Id : 5103572149 Question Type : MCQ Option Shuffling : Yes Display Question Number : Yes Is Question Mandatory : No Single Line Question Option : No Option Orientation : Vertical

Correct Marks : 1 Wrong Marks : 0

What is the number in the Venn diagram that represent the people who speak all the three languages

ఈ వెన్ పటంలోని ఏ సంఖ్య మూడు భాషలను మాట్లాడే వారిని సూచిస్తుంది

Options :

1. ✘ 3

2. ✘ 4

3. ✔ 6

4. ✘ 7

**Question Number : 55 Question Id : 5103572150 Question Type : MCQ Option Shuffling : Yes Display Question Number : Yes Is Question Mandatory : No Single Line Question Option : No Option Orientation : Vertical**

**Correct Marks : 1 Wrong Marks : 0**

What is the number in the Venn diagram that represents the people who speak telugu and English but not Hindi?

వెన్ పటంలో ఏ సంఖ్య తెలుగు మరియు ఇంగ్లీష్ ను మాట్లాడుతూ హిందీని మాట్లాడలేని వారిని సూచిస్తుంది

**Options :**

1. ✔ 2

2. ✘ 3

3. ✘ 4

4. ✘ 5

**Sub-Section Number :** 7

**Sub-Section Id :** 510357137

**Question Shuffling Allowed :** Yes

**Question Id : 5103572151 Question Type : COMPREHENSION Sub Question Shuffling Allowed : Yes Group Comprehension Questions : No**

**Question Numbers : (56 to 60)**

**Question Label : Comprehension**

## Coding and Decoding Problems

### కోడింగ్, డీకోడింగ్ సమస్యలు

#### Note

For the English Alphabets A,B,C....Z a code is designed by the following rules:

- (i) The vowels A, E, I, O, U are rotated cyclically as  $A \rightarrow E \rightarrow I \rightarrow O \rightarrow U \rightarrow A$ ;
- (ii) Each consonant is replaced by the consonant that comes immediately before it as  $B \rightarrow Z, C \rightarrow B, D \rightarrow C, F \rightarrow D, \dots$
- (iii) Based on this code answer the questions

#### సూచన

ఈ క్రింది నియమాలకు లోబడి ఇంగ్లీష్ అక్షరమాల A,B,C....Z లకు ఒక కోడ్ ను రూపకల్పన

చేసారు

- (i) అచ్చులు A,E,I,O,U లు చక్రీయంగా తర్వాతి అచ్చుకు పంపించారు. అంటే  $A \rightarrow E \rightarrow I \rightarrow O \rightarrow U \rightarrow A$
- (ii) ప్రతి హల్లును దానికి ముందున్న హల్లుకు పంపించారు అంటే  $B \rightarrow Z, C \rightarrow B, D \rightarrow C, F \rightarrow D, \dots$   
ఈ కోడ్ ను ఆధారంగా చేసుకని ఇచ్చిన ప్రశ్నలకు జవాబు ఇవ్వండి.

#### Sub questions

Question Number : 56 Question Id : 5103572152 Question Type : MCQ Option Shuffling : Yes  
Display Question Number : Yes Is Question Mandatory : No Single Line Question Option : No  
Option Orientation : Vertical

Correct Marks : 1 Wrong Marks : 0

What is the code for BUSINESS?

BUSINESS కు కోడ్ ఏమిటి?

Options :

1. ✘ ZTRHMDRR

2. ✔ ZAROMIRR

3. ✘ ATRHNCRR

4. ✘ AVRGDRR

Question Number : 57 Question Id : 5103572153 Question Type : MCQ Option Shuffling : Yes  
Display Question Number : Yes Is Question Mandatory : No Single Line Question Option : No  
Option Orientation : Vertical

Correct Marks : 1 Wrong Marks : 0

What is the word coded as BULNASIQ?

ఏ పదం "BULNASIQ" గా కోడ్ చేయబడింది?

Options :

1. ✘ CONTROLE
2. ✘ COSTUMES
3. ✔ COMPUTER
4. ✘ CONSUMER

Question Number : 58 Question Id : 5103572154 Question Type : MCQ Option Shuffling : Yes  
Display Question Number : Yes Is Question Mandatory : No Single Line Question Option : No  
Option Orientation : Vertical

Correct Marks : 1 Wrong Marks : 0

What word is coded as 'DOMEMBI'?

ఏ పదం 'DOMEMBI' గా కోడ్ చేయబడింది?

Options :

1. ✘ FIANCEE
2. ✘ FAMINES

3. ✘ FINNACE

4. ✔ FINANCE

Question Number : 59 Question Id : 5103572155 Question Type : MCQ Option Shuffling : Yes  
Display Question Number : Yes Is Question Mandatory : No Single Line Question Option : No  
Option Orientation : Vertical

Correct Marks : 1 Wrong Marks : 0

What is the code for 'INFOSYS'?

INFOSYS కు కోడ్ ఏమిటి?

Options :

1. ✔ OMDURXR

2. ✘ EOCOTXT

3. ✘ OMCOVYV

4. ✘ EIDAZUZ

Question Number : 60 Question Id : 5103572156 Question Type : MCQ Option Shuffling : Yes  
Display Question Number : Yes Is Question Mandatory : No Single Line Question Option : No  
Option Orientation : Vertical

Correct Marks : 1 Wrong Marks : 0

What is the code for 'MOBILE'?

'MOBILE' కు కోడ్ ఏమిటి?

Options :

1. ✘ NAYUMD

2. ✓ LUZOKI

3. ✗ LIXANO

4. ✗ NETBLI

**Sub-Section Number :**

8

**Sub-Section Id :**

510357138

**Question Shuffling Allowed :**

Yes

**Question Number : 61 Question Id : 5103572157 Question Type : MCQ Option Shuffling : Yes**

**Display Question Number : Yes Is Question Mandatory : No Single Line Question Option : No**

**Option Orientation : Vertical**

**Correct Marks : 1 Wrong Marks : 0**

In a certain code 'WATCH' is coded as 'VBSDG', then in the same code the code for 'BRING' is?

ఒక కోడ్ లాషల్ 'WATCH' ను 'VBSDG' గా కోడ్ చేసినట్లయితే, ఆ కోడ్ లాషల్ 'BRING' కు కోడ్?

**Options :**

1. ✓ ASHOF

2. ✗ CQJMH

3. ✗ AQHMF

4. ✗ CSJOH

Question Number : 62 Question Id : 5103572158 Question Type : MCQ Option Shuffling : Yes  
Display Question Number : Yes Is Question Mandatory : No Single Line Question Option : No  
Option Orientation : Vertical

Correct Marks : 1 Wrong Marks : 0

If the word 'MIST' is coded as 75 and 'NODE' is coded as 54, then in the same code language 'PARK' is coded as

'MIST' ను 75 గానూ 'NODE' ను 54గాను కోడ్ చేసినట్లయితే, అదే కోడ్ బాషలో 'PARK' కు కోడ్

Options :

1. ✘ 50

2. ✘ 55

3. ✔ 60

4. ✘ 65

Question Number : 63 Question Id : 5103572159 Question Type : MCQ Option Shuffling : Yes  
Display Question Number : Yes Is Question Mandatory : No Single Line Question Option : No  
Option Orientation : Vertical

Correct Marks : 1 Wrong Marks : 0

If the word 'PENCIL' is coded as 'RHRHOS', then in the same code language code for the word ' RATING' is

'PENCIL' ను 'RHRHOS' గా కోడ్ చేసినట్లయితే, అదే కోడ్ బాషలో ' RATING' కు కోడ్

Options :

1. ✘ TCXMRK

2. ✘ TCXNRN

3. ✘ TDVOQP

4. ✔ TDXNTN

**Question Number : 64 Question Id : 5103572160 Question Type : MCQ Option Shuffling : Yes Display Question Number : Yes Is Question Mandatory : No Single Line Question Option : No Option Orientation : Vertical**

**Correct Marks : 1 Wrong Marks : 0**

If 'CLASS' is coded as 'DMBTT', then code for the word 'FREEDOM' is

'CLASS' ను 'DMBTT' గా కోడ్ చేసినట్లయితే, అదే కోడ్ బాషల్ 'FREEDOM' కు కోడ్

**Options :**

1. ✘ SGDDEQM

2. ✘ GRCCDRO

3. ✔ GSFFEPN

4. ✘ SQEEFMR

**Question Number : 65 Question Id : 5103572161 Question Type : MCQ Option Shuffling : Yes Display Question Number : Yes Is Question Mandatory : No Single Line Question Option : No Option Orientation : Vertical**

**Correct Marks : 1 Wrong Marks : 0**

If 1234526 is 'ENGLAND' and 785291 is 'FRANCE', then 381191 will be

1234526 'ENGLAND' అయ్యి 785291 'FRANCE' అయితే, అప్పుడు 381191 ఏది?

**Options :**

1. ✘ GEORGE

2. ✖ RUSSIA

3. ✖ GERMAN

4. ✔ GREECE

Question Number : 66 Question Id : 5103572162 Question Type : MCQ Option Shuffling : Yes  
Display Question Number : Yes Is Question Mandatory : No Single Line Question Option : No  
Option Orientation : Vertical

Correct Marks : 1 Wrong Marks : 0

Date, Time & Arrangement Problems

తేదీ, సమయం, అమరికల సమస్యలు

The day on 17<sup>th</sup> July 2016 was

17 జూలై 2016 ఏ వారం?

Options :

Wednesday

1. ✖ బుధవారం

Thursday

2. ✖ గురువారం

Sunday

3. ✔ ఆదివారం

Saturday

4. ✖ శనివారం

Question Number : 67 Question Id : 5103572163 Question Type : MCQ Option Shuffling : Yes  
Display Question Number : Yes Is Question Mandatory : No Single Line Question Option : No  
Option Orientation : Vertical

Correct Marks : 1 Wrong Marks : 0

Date, Time & Arrangement Problems

తేదీ, సమయం, అమరికల సమస్యలు

The time between 5:30 AM and 6:10 AM, the two hands of the clock will be at right angles is

ఒక గడియారములో 5.30 a.m, 6.10 a.mల మధ్య రెండు ముల్లులు లంబ కోణాన్ని ఏర్పరిచే సమయం

Options :

1. ✘  $5.57\frac{3}{11} A.M$

2. ✘  $5.53\frac{7}{11} A.M$

3. ✘  $5.47\frac{3}{11} A.M$

4. ✔  $5.43\frac{7}{11} A.M$

Question Number : 68 Question Id : 5103572164 Question Type : MCQ Option Shuffling : Yes  
Display Question Number : Yes Is Question Mandatory : No Single Line Question Option : No  
Option Orientation : Vertical

Correct Marks : 1 Wrong Marks : 0

Date, Time & Arrangement Problems

తేదీ, సమయం, అమరికల సమస్యలు

The smallest angle between the two hands of a clock when the time is 10:25 AM is

ఒక గడియారంలో 10.25 a.m గా ఉంటే ఆ గడియారంలో ముల్లుల మధ్య ఏర్పడే కోణం

Options :

1. ✘  $157\frac{1}{2}^{10}$

2. ✔  $162\frac{1}{2}^{10}$

3. ✘  $167\frac{1}{2}^{10}$

4. ✘  $172\frac{1}{2}^{10}$

Question Number : 69 Question Id : 5103572165 Question Type : MCQ Option Shuffling : Yes  
Display Question Number : Yes Is Question Mandatory : No Single Line Question Option : No  
Option Orientation : Vertical

Correct Marks : 1 Wrong Marks : 0

Date, Time & Arrangement Problems

తేదీ, సమయం, అమరికల సమస్యలు

Miss A, who is daughter of Mr. B, said to Miss C that "your mother D is the elder sister of my father who is second child of Mr. E". Then E is related to C as

B అనే అతని కూతురు A అనే ఆమె, C అనే ఆమెతో ఇలా అంది. "E అనే అతని రెండవ

సంతానమైన నా తండ్రికి నీ తల్లి అక్క" అప్పుడు C తో E సంబంధం.

Options :

Paternal Uncle

1. ✘ చిన్నాన/పెద్దనాన్న

Grand daughter

2. ✘ మనుమరాలు

Grand father

3. ✓ తాత

Maternal Uncle

4. ✗ మేనమామ

Question Number : 70 Question Id : 5103572166 Question Type : MCQ Option Shuffling : Yes  
Display Question Number : Yes Is Question Mandatory : No Single Line Question Option : No  
Option Orientation : Vertical

Correct Marks : 1 Wrong Marks : 0

Date, Time & Arrangement Problems

తేదీ, సమయం, అమరికల సమస్యలు

Friends A, B, C, D, E, F sit around a table facing the centre, F is between A and B and D is between C and E. If B is at immediate left to C, then the neighbours of E are

స్నేహితులు A,B,C,D,E,F లు ఒక బల్ల చుట్టూ కేంద్రబిముఖంగా కూర్చుని ఉన్నారు. A,B లకు మధ్య F మరియు C, E లకు మధ్య D ఉన్నారు. C కు తక్షణ ఎడమవైపు B ఉంటే అప్పుడు E కి ఇరుగు పొరుగు వారు

Options :

1. ✗ A, E

2. ✗ B, E

3. ✗ B, D

4. ✓ A, D

Question Number : 71 Question Id : 5103572167 Question Type : MCQ Option Shuffling : Yes  
Display Question Number : Yes Is Question Mandatory : No Single Line Question Option : No  
Option Orientation : Vertical

Correct Marks : 1 Wrong Marks : 0

Date, Time & Arrangement Problems

తేదీ, సమయం, అమరికల సమస్యలు

The difference of times of arrival of two buses A and B at Vijayawada bus stand is 43 minutes. A came to the bus stand 32 minutes later than its scheduled time. After that B arrived to the bus stand 20 minutes before its scheduled time 10.42 A.M. Then the scheduled time of arrival of bus A at the bus stand is

విజయవాడ బస్సు స్టాండ్ లో రెండు బస్సులు A, B ల ఆగమన సమయంల భేదం 43 నిమిషాలు. దాని నిర్ణీత సమయంకంటే 32నిమిషాలు ఆలస్యంగా A వచ్చింది. తరువాత B దాని నిర్ణీత సమయం 10.42 a.m కంటే 20 నిమిషాలు ముందే వచ్చింది. అప్పుడు A బస్సు స్టాండ్ కు రావలసిన నిర్ణీత సమయం.

Options :

1. ✘ 11.05 A.M
2. ✘ 10.54 A.M
3. ✔ 9.07 A.M
4. ✘ 9.39A.M

Question Number : 72 Question Id : 5103572168 Question Type : MCQ Option Shuffling : Yes  
Display Question Number : Yes Is Question Mandatory : No Single Line Question Option : No  
Option Orientation : Vertical

Correct Marks : 1 Wrong Marks : 0

Date, Time & Arrangement Problems

తేదీ, సమయం, అమరికల సమస్యలు

When I arrived at a local station, I saw in the notice board that the next train will come at 14.35 hrs with a late of 12 min. If the local trains come to the station at intervals of 30 minutes, then the scheduled departure of the previous train is

నేను ఒక లోకల్ స్టేషన్ కు వచ్చినప్పుడు తరువాత రైలు 14.35 కు వస్తుంది అని 12 నిమిషాలు ఆలస్యంగా నడుస్తున్నదని సమాచారాన్ని పట్టికలో చూశాను. ఆ స్టేషన్ లో రైళ్ళు 30 నిమిషాల వ్యవధి లో వస్తున్నట్లయితే ఇంతకు ముందు రైలు బయలుదేరాల్సిన నిర్ణీత సమయం.

**Options :**

1. ✘ 13.45 hrs

2. ✔ 13.53 hrs

3. ✘ 13.30 hrs

4. ✘ 14.53 hrs

**Question Number : 73 Question Id : 5103572169 Question Type : MCQ Option Shuffling : Yes Display Question Number : Yes Is Question Mandatory : No Single Line Question Option : No Option Orientation : Vertical**

**Correct Marks : 1 Wrong Marks : 0**

**Date, Time & Arrangement Problems**

**తేదీ, సమయం, అమరికల సమస్యలు**

If A, M, D, S denote Addition, Multiplication, Division and Subtraction respectively, then  
[20S{(6M4)D4}A7] =?

A,M,D,S వరుసక్రమంలో కూడికను, గుణకారాన్ని, భాగహారాన్ని, తీసివేతను సూచిస్తే అప్పుడు

[20S{(6M4)D4}A7] =?

**Options :**

1. ✘ 16

2. ✖ 18

3. ✖ 20

4. ✔ 21

Question Number : 74 Question Id : 5103572170 Question Type : MCQ Option Shuffling : Yes  
Display Question Number : Yes Is Question Mandatory : No Single Line Question Option : No  
Option Orientation : Vertical

Correct Marks : 1 Wrong Marks : 0

Date, Time & Arrangement Problems

తేదీ, సమయం, అమరికల సమస్యలు

If  $xy \neq 0$  and  $x * y = 1 + \frac{1}{xy}$ , then  $\sum_{a=1}^{2020} (\frac{1}{a^2} * a) =$

$xy \neq 0$  మరియు  $x * y = 1 + \frac{1}{xy}$  అయితే, అప్పుడు  $\sum_{a=1}^{2020} (\frac{1}{a^2} * a) = ?$

Options :

1. ✖ 2020 x 1011

2. ✖ 2021 x 1011

3. ✔ 2023 x 1010

4. ✖ 2021 x 1010

Question Number : 75 Question Id : 5103572171 Question Type : MCQ Option Shuffling : Yes  
Display Question Number : Yes Is Question Mandatory : No Single Line Question Option : No  
Option Orientation : Vertical

Correct Marks : 1 Wrong Marks : 0

## Date, Time & Arrangement Problems

తేదీ, సమయం, అమరికల సమస్యలు

$$a = \frac{1}{2}, b = \frac{1}{3}, x = \sum_{n=0}^{\infty} a^n, y = \sum_{n=0}^{\infty} b^n, \text{ then } \frac{x+y}{x-y} = ?$$

$$a = \frac{1}{2}, b = \frac{1}{3}, x = \sum_{n=0}^{\infty} a^n, y = \sum_{n=0}^{\infty} b^n, \text{ అప్పుడు } \frac{x+y}{x-y} = ?$$

Options :

1. ✘  $\frac{14}{3}$

2. ✔ 7

3. ✘  $7\frac{1}{2}$

4. ✘  $7\frac{1}{3}$

## Mathematical Ability

Section Id :	51035732
Section Number :	2
Section type :	Online
Mandatory or Optional :	Mandatory
Number of Questions :	75
Number of Questions to be attempted :	75
Section Marks :	75
Display Number Panel :	Yes
Group All Questions :	Yes
Mark As Answered Required? :	Yes
Sub-Section Number :	1
Sub-Section Id :	510357139

Question Shuffling Allowed :

Yes

Question Number : 76 Question Id : 5103572172 Question Type : MCQ Option Shuffling : Yes  
Display Question Number : Yes Is Question Mandatory : No Single Line Question Option : No  
Option Orientation : Vertical

Correct Marks : 1 Wrong Marks : 0

Arithmetical Ability

అంకగణిత సామర్థ్యత

$$\frac{1}{x^{a-b} + x^{a-c} + 1} + \frac{1}{x^{b-c} + x^{b-a} + 1} + \frac{1}{x^{c-a} + x^{c-b} + 1} =$$

Options :

1. ✓ 1

2. ✗ 2

3. ✗ 3

4. ✗ 0

Question Number : 77 Question Id : 5103572173 Question Type : MCQ Option Shuffling : Yes  
Display Question Number : Yes Is Question Mandatory : No Single Line Question Option : No  
Option Orientation : Vertical

Correct Marks : 1 Wrong Marks : 0

Arithmetical Ability

అంకగణిత సామర్థ్యత

If  $x, y, z$  are real numbers and not all zero and  $x + y + z = 0$ , then  $\frac{x^2+y^2+z^2}{(x-y)^2+(y-z)^2+(z-x)^2} =$

$x, y, z$  లు అన్ని సున్నా కాని వాస్తవ సంఖ్యలు మరియు  $x + y + z = 0$  అయితే, అప్పుడు

$$\frac{x^2+y^2+z^2}{(x-y)^2+(y-z)^2+(z-x)^2} =$$

Options :

1. ✘ 1

2. ✔ 1/3

3. ✘ 0

4. ✘ 1/2

Question Number : 78 Question Id : 5103572174 Question Type : MCQ Option Shuffling : Yes  
Display Question Number : Yes Is Question Mandatory : No Single Line Question Option : No  
Option Orientation : Vertical

Correct Marks : 1 Wrong Marks : 0

Arithmetical Ability

అంకగణిత సామర్థ్యత

Rs. 6,624 is divided among P, Q and R so that the ratio of P's to Q's share is 2:1 and that of Q's to R's share is 6:5. Then the share (in rupees) of Q is

P, Q ల వాటాల నిష్పత్తి 2:1 మరియు Q, R ల వాటాల నిష్పత్తి 6: 5 అయ్యేటట్లుగా రూ. 6,624

లను P, Q మరియు R ల మధ్య పంచినారు. అప్పుడు Q యొక్క వాటా(రూ.లలో)

Options :

1. ✘ 3756

2. ✘ 1440

3. ✔ 1728

4. ✘ 2728

Question Number : 79 Question Id : 5103572175 Question Type : MCQ Option Shuffling : Yes  
Display Question Number : Yes Is Question Mandatory : No Single Line Question Option : No  
Option Orientation : Vertical

Correct Marks : 1 Wrong Marks : 0

### Arithmetical Ability

#### అంకగణిత సామర్థ్యత

At a certain function the ratio of gents and ladies was 1:2. But when 2 gents and 2 ladies left the function, the ratio became 1:3. How many people were present at the function in the beginning?

ఒక ఫంక్షన్ వద్దగల పురుషులు మరియు స్త్రీల నిష్పత్తి 1:2 అయితే, ఇద్దరు పురుషులు మరియు ఇద్దరు స్త్రీలు ఆ ఫంక్షన్ను వదిలి వెళ్ళినప్పుడు ఆ నిష్పత్తి 1:3 అయింది. ఆ ఫంక్షన్ వద్ద మొదట్లో హాజరయినవారు ఎందరు?

Options :

1. ✘ 18

2. ✘ 15

3. ✘ 16

4. ✔ 12

Question Number : 80 Question Id : 5103572176 Question Type : MCQ Option Shuffling : Yes  
Display Question Number : Yes Is Question Mandatory : No Single Line Question Option : No  
Option Orientation : Vertical

Correct Marks : 1 Wrong Marks : 0

### Arithmetical Ability

#### అంకగణిత సామర్థ్యత

If  $a = \sqrt{2} + \sqrt{3}$  then  $a^3 + \frac{1}{a^3} =$

$a = \sqrt{2} + \sqrt{3}$  అయితే, అప్పుడు  $a^3 + \frac{1}{a^3} =$

Options :

1. ✓  $18\sqrt{3}$

2. ✗  $16\sqrt{2}$

3. ✗  $10\sqrt{3}$

4. ✗  $9\sqrt{3}$

Question Number : 81 Question Id : 5103572177 Question Type : MCQ Option Shuffling : Yes  
Display Question Number : Yes Is Question Mandatory : No Single Line Question Option : No  
Option Orientation : Vertical

Correct Marks : 1 Wrong Marks : 0

Arithmetical Ability

అంకగణిత సామర్థ్యత

$$\sqrt{10 + 2\sqrt{6} - 2\sqrt{10} - 2\sqrt{15}} =$$

Options :

1. ✗  $\sqrt{2} - \sqrt{3} + \sqrt{5}$

2. ✗  $\sqrt{2} + \sqrt{3} + \sqrt{5}$

3. ✓  $\sqrt{2} + \sqrt{3} - \sqrt{5}$

4. ✗  $\sqrt{3} - \sqrt{2} + \sqrt{5}$

Question Number : 82 Question Id : 5103572178 Question Type : MCQ Option Shuffling : Yes  
Display Question Number : Yes Is Question Mandatory : No Single Line Question Option : No  
Option Orientation : Vertical

Correct Marks : 1 Wrong Marks : 0

Arithmetical Ability

అంకగణిత సామర్థ్యత

The sum of all odd numbers from 1 to 300 is

1 నుండి 300 వరకు గల అన్ని బీసీ సంఖ్యల మొత్తము

Options :

1. ✘ 22650

2. ✘ 27500

3. ✔ 22500

4. ✘ 22350

Question Number : 83 Question Id : 5103572179 Question Type : MCQ Option Shuffling : Yes  
Display Question Number : Yes Is Question Mandatory : No Single Line Question Option : No  
Option Orientation : Vertical

Correct Marks : 1 Wrong Marks : 0

Arithmetical Ability

అంకగణిత సామర్థ్యత

The least value of  $x$  such that  $98756x943$  is divisible by 9 is

98756x943 అనేది 9చే నిశ్చేషంగా భాగింపబడేటందుకు  $x$  యొక్క కనిష్ట విలువ

Options :

1. ✘ 5

2. ✘ 2

3. ✔ 3

4. ✘ 4

Question Number : 84 Question Id : 5103572180 Question Type : MCQ Option Shuffling : Yes  
Display Question Number : Yes Is Question Mandatory : No Single Line Question Option : No  
Option Orientation : Vertical

Correct Marks : 1 Wrong Marks : 0

### Arithmetical Ability

### అంకగణిత సామర్థ్యత

The least positive integer which when divided by 2, 3, 4, 5 and 6 leaves in each case a remainder 1, but when divided by 7 leaves no remainder is

2, 3, 4, 5 మరియు 6 లచే భాగించినప్పుడు ప్రతి సందర్భంలోనూ శేషం 1 ఇస్తుంది, అయితే 7 చే భాగించినప్పుడు శేషము ఏదీ ఇవ్వనటువంటి కనిష్ట ధన పూర్ణాంకం

Options :

1. ✘ 361

2. ✘ 481

3. ✘ 287

4. ✔ 301

Question Number : 85 Question Id : 5103572181 Question Type : MCQ Option Shuffling : Yes  
Display Question Number : Yes Is Question Mandatory : No Single Line Question Option : No  
Option Orientation : Vertical

Correct Marks : 1 Wrong Marks : 0

### Arithmetical Ability

#### అంకగణిత సామర్థ్యత

The largest 4 digit number that leaves same remainder 5 when divided by 8, 15, 12, 25 is

8, 15, 12, 25 లచే భాగించినప్పుడు శేషము 5 ఇచ్చే నాలుగు అంకెల గరిష్ట సంఖ్య

Options :

1. ✘ 9905

2. ✘ 9805

3. ✘ 9705

4. ✔ 9605

Question Number : 86 Question Id : 5103572182 Question Type : MCQ Option Shuffling : Yes  
Display Question Number : Yes Is Question Mandatory : No Single Line Question Option : No  
Option Orientation : Vertical

Correct Marks : 1 Wrong Marks : 0

### Arithmetical Ability

#### అంకగణిత సామర్థ్యత

The least fraction that should be added to  $3\frac{2}{3} + 6\frac{7}{12} + 4\frac{9}{36} + 6 + 7\frac{1}{12}$  to make the sum a whole number is

$3\frac{2}{3} + 6\frac{7}{12} + 4\frac{9}{36} + 6 + 7\frac{1}{12}$  మొత్తమును ఒక పూర్ణ సంఖ్య (whole number) గా చేసేందుకు కలపవలసిన కనిష్ట భిన్నము

Options :

1. ✘ 17/36

2. ✔ 5/12

3. ✘ 1/12

4. ✘ 5/36

Question Number : 87 Question Id : 5103572183 Question Type : MCQ Option Shuffling : Yes  
Display Question Number : Yes Is Question Mandatory : No Single Line Question Option : No  
Option Orientation : Vertical

Correct Marks : 1 Wrong Marks : 0

Arithmetical Ability

అంకగణిత సామర్థ్యత

$$\left[ \left(1 + \frac{1}{2}\right) \left(1 + \frac{1}{3}\right) \left(1 + \frac{1}{4}\right) \left(1 + \frac{1}{5}\right) \right] \left[ \left(1 - \frac{1}{2}\right) \left(1 - \frac{1}{3}\right) \left(1 - \frac{1}{4}\right) \left(1 - \frac{1}{5}\right) \right] =$$

Options :

1. ✔ 3/5

2. ✘ 7/9

3. ✘ 9/11

4. ✘ 11/5

Question Number : 88 Question Id : 5103572184 Question Type : MCQ Option Shuffling : Yes  
Display Question Number : Yes Is Question Mandatory : No Single Line Question Option : No  
Option Orientation : Vertical

Correct Marks : 1 Wrong Marks : 0

Arithmetical Ability

అంకగణిత సామర్థ్యత

The increasing order of the fractions  $\frac{6}{7}, \frac{7}{8}, \frac{5}{6}$  and  $\frac{4}{5}$  is

$\frac{6}{7}, \frac{7}{8}, \frac{5}{6}$  మరియు  $\frac{4}{5}$  బిన్నముల ఆరోహణ క్రమము

Options :

1. ✘  $\frac{7}{8} < \frac{6}{7} < \frac{5}{6} < \frac{4}{5}$

2. ✘  $\frac{4}{5} < \frac{5}{6} < \frac{7}{8} < \frac{6}{7}$

3. ✘  $\frac{7}{8} < \frac{6}{7} < \frac{4}{5} < \frac{5}{6}$

4. ✔  $\frac{4}{5} < \frac{5}{6} < \frac{6}{7} < \frac{7}{8}$

Question Number : 89 Question Id : 5103572185 Question Type : MCQ Option Shuffling : Yes  
Display Question Number : Yes Is Question Mandatory : No Single Line Question Option : No  
Option Orientation : Vertical

Correct Marks : 1 Wrong Marks : 0

Arithmetical Ability

అంకగణిత సామర్థ్యత

If  $x \leq y \leq z \leq t \leq w \leq x$  and  $y = 23$ , then  $w =$

$x \leq y \leq z \leq t \leq w \leq x$  మరియు  $y = 23$  అయితే, అప్పుడు  $w =$

Options :

1. ✘ 28

2. ✘ 27

3. ✘ 25

4. ✓ 23

Question Number : 90 Question Id : 5103572186 Question Type : MCQ Option Shuffling : Yes  
Display Question Number : Yes Is Question Mandatory : No Single Line Question Option : No  
Option Orientation : Vertical

Correct Marks : 1 Wrong Marks : 0

### Arithmetical Ability

### అంకగణిత సామర్థ్యత

When the tax on a commodity is diminished by 15%, then its consumption is increased by 10%. What is the effect on the revenue derived from it?

ఒక సరుకు పైన పన్నును 15% తగ్గించినప్పుడు, దాని వినియోగం 10% పెరిగింది. దానినుండి పొందిన రాబడిపైన దాని ప్రభావం ఎంత.

Options :

1. ✘ Decrease by 7.5%  
7.5% తగ్గుదల

2. ✘ Increase by 4.5%  
4.5% పెరుగుదల

3. ✘ Increase by 6.5%  
6.5% పెరుగుదల

4. ✓ Decrease by 6.5%  
6.5% తగ్గుదల

Question Number : 91 Question Id : 5103572187 Question Type : MCQ Option Shuffling : Yes  
Display Question Number : Yes Is Question Mandatory : No Single Line Question Option : No  
Option Orientation : Vertical

Correct Marks : 1 Wrong Marks : 0

## Arithmetical Ability

### అంకగణిత సామర్థ్యత

The radius of a circle is increased by 10%. How much percent does its area increase?

ఒక వృత్తం వ్యాసార్థం 10% పెరిగింది. దాని వైశాల్యం ఎంత శాతం పెరిగింది?

Options :

1. ✘ 23%

2. ✔ 21%

3. ✘ 20%

4. ✘ 22%

Question Number : 92 Question Id : 5103572188 Question Type : MCQ Option Shuffling : Yes

Display Question Number : Yes Is Question Mandatory : No Single Line Question Option : No

Option Orientation : Vertical

Correct Marks : 1 Wrong Marks : 0

## Arithmetical Ability

### అంకగణిత సామర్థ్యత

By selling an article for Rs. 5700, a trader would lose 5%. At what price (in Rs.) must he sell it, to gain 5%?

ఒక వస్తువును రూ. 5,700 కి అమ్మినప్పుడు ఒక వర్తకుడు 5% కోల్పోతాడు. 5% లాభాన్ని

పొందడానికి అతడు ఏ ధరకు (రూపాయలలో) అమ్మవలెను?

Options :

1. ✔ 6300

2. ✘ 6200

3. ✘ 5900

4. ✘ 6100

Question Number : 93 Question Id : 5103572189 Question Type : MCQ Option Shuffling : Yes  
Display Question Number : Yes Is Question Mandatory : No Single Line Question Option : No  
Option Orientation : Vertical

Correct Marks : 1 Wrong Marks : 0

### Arithmetical Ability

### అంకగణిత సామర్థ్యత

The cost price of 15 books is equal to the selling price of 18 books. What is the percentage of profit or loss?

15 పుస్తకములు కొన్న వెల, 18 పుస్తకములు అమ్మకపు వెల కి సమానం. లాభం లేదా నష్టశాతం ఎంత?

Options :

1. ✘  $16\frac{2}{3}\%$  Profit  
 $16\frac{2}{3}\%$  లాభం

2. ✔  $16\frac{2}{3}\%$  Loss  
 $16\frac{2}{3}\%$  నష్టం

3. ✘  $\frac{100}{3}\%$  Profit  
 $\frac{100}{3}\%$  లాభం

4. ✘  $\frac{100}{3}\%$  Loss  
 $\frac{100}{3}\%$  నష్టం

Question Number : 94 Question Id : 5103572190 Question Type : MCQ Option Shuffling : Yes  
Display Question Number : Yes Is Question Mandatory : No Single Line Question Option : No  
Option Orientation : Vertical

Correct Marks : 1 Wrong Marks : 0

### Arithmetical Ability

#### అంకగణిత సామర్థ్యత

P and Q entered into a partnership investment of Rs. 24000 and Rs. 30000 respectively.  
After 6 months P withdraws Rs. 4000. What is the share (in Rs.) of Q in the annual profit of  
Rs. 10,400?

P మరియు Qలు వరుసగా రూ. 24,000 మరియు రూ. 30,000 ల పెట్టుబడితో భాగస్వామ్యంలో  
వ్యాపారం మొదలు పెట్టారు. 6 నెలల తరువాత P రూ.4,000 లను వెనుకకు తీసుకున్నాడు.  
సంవత్సరాంతమున లాభం రూ.10,400 లలో Q వాట (రూ. లలో) ఎంత?

Options :

1. ✘ 4000

2. ✘ 6400

3. ✘ 4400

4. ✔ 6000

Question Number : 95 Question Id : 5103572191 Question Type : MCQ Option Shuffling : Yes  
Display Question Number : Yes Is Question Mandatory : No Single Line Question Option : No  
Option Orientation : Vertical

Correct Marks : 1 Wrong Marks : 0

### Arithmetical Ability

#### అంకగణిత సామర్థ్యత

P, Q, R and S enter into a partnership. P subscribes  $\frac{1}{3}$  of the capital, Q subscribes  $\frac{1}{4}$ , R subscribes  $\frac{1}{4}$  of the capital and S subscribes the rest. Then the share (in Rs.) of S out of a profit of Rs. 6000 is

P, Q, R మరియు S లు ఒక భాగస్వామ్యంలో ప్రవేశించారు. పెట్టుబడిలో  $\frac{1}{3}$  వ వంతు P,  $\frac{1}{4}$  వ వంతు Q,  $\frac{1}{4}$  వ వంతు R పెట్టగా మిగిలినదానిని S పెట్టుబడిగా పెట్టాడు. మొత్తం లాభం రూ. 6,000 లలో S యొక్క వాటా(రూ.లలో)

**Options :**

1. ✘ 1400
2. ✘ 1200
3. ✔ 1000
4. ✘ 1100

**Question Number : 96 Question Id : 5103572192 Question Type : MCQ Option Shuffling : Yes Display Question Number : Yes Is Question Mandatory : No Single Line Question Option : No Option Orientation : Vertical**

**Correct Marks : 1 Wrong Marks : 0**

**Arithmetical Ability**

**అంకగణిత సామర్థ్యత**

Two pipes P and Q will fill a cistern in  $37\frac{1}{2}$  min. and 45 min. respectively. If both pipes are opened at a time, after what time (in min.) the second pipe Q must be turned off, so that the cistern is filled in half an hour?

P మరియు Q పైపులు ఒక తొట్టినీ వరుసగా  $37\frac{1}{2}$  ని.లు మరియు 45 ని.లు లలో నింపగలవు. రెండు

పైపులును ఏకకాలంలో తెరిస్తే, ఆ తొట్టె అర్ధగంటలో నిండడానికి రెండో పైపు Qని ఎంత కాలం

తరువాత(ని.లు లలో) మూసి ఉంచాలి.

**Options :**

1. ✔ 9

2. ✖ 10

3. ✖ 8

4. ✖ 12

Question Number : 97 Question Id : 5103572193 Question Type : MCQ Option Shuffling : Yes  
Display Question Number : Yes Is Question Mandatory : No Single Line Question Option : No  
Option Orientation : Vertical

Correct Marks : 1 Wrong Marks : 0

### Arithmetical Ability

#### అంకగణిత సామర్థ్యత

Two pipes P and Q can fill a cistern in 4 min. and 6 min. respectively. If these pipes are opened on alternatively starting with P for one minute each, how long (in min.) will it take to fill the cistern?

P మరియు Q పైపులు ఒక తొట్టిని వరుసగా 4 ని.లు మరియు 6ని.లలో నింపగలవు. P తో

మొదలుపెట్టి ఈ పైపులు ఒకదాని తరువాత మరొకదానిని ఒక్కొక్కదానిని ఒక నిమిషం చొప్పున తెరిస్తే

ఆ తొట్టి నిండడానికి ఎంత కాలం(ని.లు లలో) పడుతుంది?

Options :

1. ✖  $4\frac{1}{3}$

2. ✔  $4\frac{2}{3}$

3. ✖  $5\frac{1}{4}$

4. ✖  $5\frac{1}{3}$

Question Number : 98 Question Id : 5103572194 Question Type : MCQ Option Shuffling : Yes  
Display Question Number : Yes Is Question Mandatory : No Single Line Question Option : No  
Option Orientation : Vertical

Correct Marks : 1 Wrong Marks : 0

### Arithmetical Ability

#### అంకగణిత సామర్థ్యత

A car does a journey in 10 hours during the first half at 42 kmph and in the next half at 48 kmph. Then what is the total distance travelled by the car (in kilometers)?

ఒక కారు ప్రయాణం చేసిన 10 గంటలలో మొదటి సగభాగం దూరాన్ని గంటకు 42 కి.మీ, తరువాత సగభాగం గంటకు 48కి.మీ వంతున వెళ్ళింది. అప్పుడు ఆ కారు ప్రయాణం చేసిన మొత్తం దూరం (కి.మీలలో)

Options :

1. ✘ 428

2. ✘ 378

3. ✔ 448

4. ✘ 468

Question Number : 99 Question Id : 5103572195 Question Type : MCQ Option Shuffling : Yes  
Display Question Number : Yes Is Question Mandatory : No Single Line Question Option : No  
Option Orientation : Vertical

Correct Marks : 1 Wrong Marks : 0

### Arithmetical Ability

#### అంకగణిత సామర్థ్యత

A train travelling at a speed of 80 kmph reaches its destination  $1\frac{1}{2}$  hrs earlier to the time it would have taken at a speed of 60 kmph, for the same distance. Then the distance travelled by the train (in kms) is

గంటకు 80 కి.మీ వేగంతో ప్రయాణం చేసే ఒక రైలుబండి దాని గమ్యాన్ని అదే దూరాన్ని గంటకు 60కి.మీ వేగంతో ప్రయాణించే కాలం కంటే  $1\frac{1}{2}$  గంటలు ముందుగా చేరుతుంది. అప్పుడు ఆ రైలు బండి ప్రయాణం చేసిన దూరం (కి.మీ లలో)

**Options :**

1. ✘ 120

2. ✘ 240

3. ✔ 360

4. ✘ 480

**Question Number : 100 Question Id : 5103572196 Question Type : MCQ Option Shuffling : Yes Display Question Number : Yes Is Question Mandatory : No Single Line Question Option : No Option Orientation : Vertical**

**Correct Marks : 1 Wrong Marks : 0**

**Arithmetical Ability**

**అంకగణిత సామర్థ్యత**

P works twice as much as Q. If both of them together finish a work in 12 days, in how many days P alone can complete the same work?

Q చేసే పనికి రెట్టింపు పని P చేస్తాడు. వారిద్దరూ కలిసి ఒక పనిని 12 రోజులలో పూర్తి చేస్తే అదే పనిని

P ఒక్కడు ఎన్ని రోజులలో పూర్తి చేయగలడు?

**Options :**

1. ✘ 17

2. ✘ 20

3. ✘ 16

4. ✔ 18

Question Number : 101 Question Id : 5103572197 Question Type : MCQ Option Shuffling : Yes  
Display Question Number : Yes Is Question Mandatory : No Single Line Question Option : No  
Option Orientation : Vertical

Correct Marks : 1 Wrong Marks : 0

### Arithmetical Ability

### అంకగణిత సామర్థ్యత

P alone can complete a work in 6 days, Q alone in 8 days and R alone in 12 days. After Q and R together worked for 2 days, then R left the work and P replaced him. In how many days will the remaining work be completed?

ఒక పనిని P ఒక్కడే 6 రోజుల్లో Q ఒక్కడే 8 రోజుల్లో మరియు R ఒక్కడే 12 రోజుల్లో పూర్తి చేయగలడు.

Q మరియు R కలిసి 2 రోజులు చేసిన తరువాత, R ఆ పనిని వదిలి వెళ్ళిపోగా అతని స్థానాన్ని P భర్తీ చేశాడు. మిగిలిన పని ఎన్ని రోజుల్లో పూర్తి కాగలదు?

Options :

1. ✘ 5

2. ✔ 2

3. ✘ 3

4. ✘ 4

Question Number : 102 Question Id : 5103572198 Question Type : MCQ Option Shuffling : Yes  
Display Question Number : Yes Is Question Mandatory : No Single Line Question Option : No

**Option Orientation : Vertical**

**Correct Marks : 1 Wrong Marks : 0**

**Arithmetical Ability**

**అంకగణిత సామర్థ్యత**

The length and height of a hall are 22m and 6.5 m respectively. If the area of the four walls of the hall is 442 sq.m, what is the breadth of the hall in meters?

ఒక హాలు యొక్క పొడవు మరియు ఎత్తులు వరుసగా 22 మీటర్లు మరియు 6.5 మీటర్లు. ఆ హాలు యొక్క నాలుగు గోడల వైశాల్యం 442 చ.మీ అయితే ఆ హాలు యొక్క వెడల్పు ఎన్ని మీటర్లు?

**Options :**

1. ✘ 14

2. ✘ 13

3. ✘ 11

4. ✔ 12

**Question Number : 103 Question Id : 5103572199 Question Type : MCQ Option Shuffling : Yes**

**Display Question Number : Yes Is Question Mandatory : No Single Line Question Option : No**

**Option Orientation : Vertical**

**Correct Marks : 1 Wrong Marks : 0**

**Arithmetical Ability**

**అంకగణిత సామర్థ్యత**

The area (in sq.meters) of the path of 2m wide around a rectangular field of dimensions 60m x 40m is

60 మీ x 40 మీ పరిమాణం కల ఒక దీర్ఘ చతురస్రాకారం పొలం చుట్టూ 2 మీటర్ల వెడల్పు గల బాట యొక్క వైశాల్యం (చ.మీలలో)

**Options :**

1. ✔ 416

2. ✘ 328

3. ✘ 288

4. ✘ 204

Question Number : 104 Question Id : 5103572200 Question Type : MCQ Option Shuffling : Yes  
Display Question Number : Yes Is Question Mandatory : No Single Line Question Option : No  
Option Orientation : Vertical

Correct Marks : 1 Wrong Marks : 0

### Arithmetical Ability

### అంకగణిత సామర్థ్యత

The volume of a right circular cylinder of height 20cm is equal to the volume of a sphere of radius 15 cm. Then the base radius of the cylinder (in centimeters) is

20 సెం.మీ ఎత్తు గల ఒక లంబవృత్తీయ స్థూపం ఘన పరిమాణం, 15సెం.మీ వ్యాసార్థం గలిగిన గోళం

ఘనపరిమాణమునకు సమానం. అప్పుడు ఆ స్థూపం ధూ వ్యాసార్థం (సెం.మీలలో)

Options :

1. ✘ 5

2. ✘ 10

3. ✔ 15

4. ✘ 20

Question Number : 105 Question Id : 5103572201 Question Type : MCQ Option Shuffling : Yes

Display Question Number : Yes Is Question Mandatory : No Single Line Question Option : No  
Option Orientation : Vertical

Correct Marks : 1 Wrong Marks : 0

### Arithmetical Ability

#### అంకగణిత సామర్థ్యత

How many solid spherical bullets of 1.5cm in diameter can be made out of a solid lead cylinder 20cm in height and 6cm radius?

20 సెం.మీ ఎత్తు మరియు 6 సెం.మీ వ్యాసార్థం గల ఒక గట్టి (ఘన) సీసపు స్థూపం నుండి 1.5 సెం.మీ వ్యాసం గలిగిన ఎన్ని గట్టి(ఘన) గోళాకార బుల్లెట్లను తయారు చేయవచ్చు.

Options :

1. ✓ 1280

2. ✘ 2560

3. ✘ 1920

4. ✘ 640

Question Number : 106 Question Id : 5103572202 Question Type : MCQ Option Shuffling : Yes  
Display Question Number : Yes Is Question Mandatory : No Single Line Question Option : No  
Option Orientation : Vertical

Correct Marks : 1 Wrong Marks : 0

### Arithmetical Ability

#### అంకగణిత సామర్థ్యత

The ratio of the area of a square to that of the square drawn on its diagonal is

ఒక చతురస్రం యొక్క వైశాల్యంనకు దాని వికర్ణంపై గీయబడిన చతురస్రం యొక్క వైశాల్యంనకు మధ్య గల నిష్పత్తి

Options :

1. ✘ 3:4

2. ✘ 2:3

3. ✔ 1:2

4. ✘ 3:5

Question Number : 107 Question Id : 5103572203 Question Type : MCQ Option Shuffling : Yes  
Display Question Number : Yes Is Question Mandatory : No Single Line Question Option : No  
Option Orientation : Vertical

Correct Marks : 1 Wrong Marks : 0

### Arithmetical Ability

### అంకగణిత సామర్థ్యత

A window is in the shape of a square surmounted by a semi circle. If the length of the side of the square is 56 cm, then the area (in sq.cm) of that window is (Take  $\pi = \frac{22}{7}$ )

ఒక కిటికీ యొక్క రూపం, ఒక చతురస్రంపై ఒక అర్ధ వృత్తం బోర్లించినట్లుగా ఉంది. ఆ చతురస్రం యొక్క భుజం పొడవు 56 సెం.మీ అయితే, ఆ కిటికీ వైశాల్యం (చ.సెం.మీ లలో) ( $\pi = \frac{22}{7}$  గా తీసుకోండి)

Options :

1. ✔ 4368

2. ✘ 5600

3. ✘ 6832

4. ✘ 8064

Question Number : 108 Question Id : 5103572204 Question Type : MCQ Option Shuffling : Yes  
Display Question Number : Yes Is Question Mandatory : No Single Line Question Option : No

Option Orientation : Vertical

Correct Marks : 1 Wrong Marks : 0

Arithmetical Ability

అంకగణిత సామర్థ్యత

The area of a semicircle is 1925 sq.cm. Then its perimeter (in cms) is approximately

ఒక అర్ధం వృత్తం యొక్క వైశాల్యం 1925 చ.సెం.మీ, అప్పుడు దానిచుట్టు కొలత (సెం.మీలలో) సుమారుగా

Options :

1. ✘ 110

2. ✔ 180

3. ✘ 290

4. ✘ 220

Question Number : 109 Question Id : 5103572205 Question Type : MCQ Option Shuffling : Yes

Display Question Number : Yes Is Question Mandatory : No Single Line Question Option : No

Option Orientation : Vertical

Correct Marks : 1 Wrong Marks : 0

Arithmetical Ability

అంకగణిత సామర్థ్యత

$11011_{(2)} = x_{(7)}$  then,  $x =$

$11011_{(2)} = x_{(7)}$  అయితే,  $x =$

Options :

1. ✘ 101

2. ✘ 12

3. ✘ 23

4. ✔ 36

Question Number : 110 Question Id : 5103572206 Question Type : MCQ Option Shuffling : Yes  
Display Question Number : Yes Is Question Mandatory : No Single Line Question Option : No  
Option Orientation : Vertical

Correct Marks : 1 Wrong Marks : 0

Arithmetical Ability

అంకగణిత సామర్థ్యత

If  $149 \equiv x \pmod{13}$  and  $0 \leq x \leq 12$ , then the remainder when  $x^2 + 7$  is divided by 9, is

$149 \equiv x \pmod{13}$  మరియు  $0 \leq x \leq 12$ , అయితే, అప్పుడు  $x^2 + 7$  ను 9 చే భాగించినప్పుడు

వచ్చే శేషం

Options :

1. ✘ 8

2. ✔ 7

3. ✘ 6

4. ✘ 5

Question Number : 111 Question Id : 5103572207 Question Type : MCQ Option Shuffling : Yes  
Display Question Number : Yes Is Question Mandatory : No Single Line Question Option : No  
Option Orientation : Vertical

Correct Marks : 1 Wrong Marks : 0

## Algebraic and Geometrical Ability

### బీజీయ, జ్యామితీయ సామర్థ్యత

Which one of the following statements is true?

ఈ క్రింది ప్రవచనములలో ఏది సత్యం?

Options :

1. ✘  $(2 + 3 = 5) \wedge (4 \times 2 = 6)$

2. ✔  $(2 + 3 = 6) \vee (5 \times 6 = 30)$

3. ✘  $(2 + 3 = 5) \wedge (2 \times 4 = 7)$

4. ✘  $(2 + 3 = 4) \vee (3 \times 3 = 6)$

Question Number : 112 Question Id : 5103572208 Question Type : MCQ Option Shuffling : Yes

Display Question Number : Yes Is Question Mandatory : No Single Line Question Option : No

Option Orientation : Vertical

Correct Marks : 1 Wrong Marks : 0

## Algebraic and Geometrical Ability

### బీజీయ, జ్యామితీయ సామర్థ్యత

Which one of the following statements is a tautology?

ఈ క్రింది ప్రవచనములలో ఏది నిత్య సత్యం?

Options :

1. ✘  $(\sim p \wedge q) \vee (\sim p \vee \sim q)$

2. ✘  $(\sim p \vee \sim q) \wedge (q \vee (\sim p \vee \sim q))$

3. ✔  $(p \wedge q) \vee (\sim p \vee \sim q)$

4. ✘  $(\sim p \wedge q) \vee (\sim q \vee \sim p)$

Question Number : 113 Question Id : 5103572209 Question Type : MCQ Option Shuffling : Yes  
Display Question Number : Yes Is Question Mandatory : No Single Line Question Option : No  
Option Orientation : Vertical

Correct Marks : 1 Wrong Marks : 0

### Algebraic and Geometrical Ability

#### బీజీయ, జ్యామితీయ సామర్థ్యత

At a party in which each person drinks either coffee or tea, 60 persons drink tea, 50 drink coffee and 20 drink both coffee and tea. How many persons are there in the party?

ప్రతి వ్యక్తి టీ కాని కాఫీ గాని తాగే ఒక పార్టీ వద్ద 60 మంది వ్యక్తులు టీ ని 50 మంది కాఫీని మరియు 20 మంది కాఫీ మరియు టీ ని త్రాగుతారు. ఆ పార్టీలోని వ్యక్తులెందరు?

Options :

1. ✘ 70

2. ✘ 85

3. ✘ 80

4. ✔ 90

Question Number : 114 Question Id : 5103572210 Question Type : MCQ Option Shuffling : Yes  
Display Question Number : Yes Is Question Mandatory : No Single Line Question Option : No  
Option Orientation : Vertical

Correct Marks : 1 Wrong Marks : 0

### Algebraic and Geometrical Ability

#### బీజీయ, జ్యామితీయ సామర్థ్యత

The number of bijective functions from the set  $\{1,2,3\}$  onto the set  $\{a,b,c,d\}$  is

సమితి  $\{1,2,3\}$  నుండి సమితి  $\{a,b,c,d\}$  కి గల ద్విగుణ ప్రమేయాల సంఖ్య

Options :

1. ✘  $3^4$

2. ✔ 0

3. ✘  $4^3$

4. ✘ 7

Question Number : 115 Question Id : 5103572211 Question Type : MCQ Option Shuffling : Yes

Display Question Number : Yes Is Question Mandatory : No Single Line Question Option : No

Option Orientation : Vertical

Correct Marks : 1 Wrong Marks : 0

**Algebraic and Geometrical Ability**

**బీజీయ, జ్యామితీయ సామర్థ్యత**

The domain of the function  $f(x) = \sqrt{\log_{10}(x^2 - 5x + 7)}$  is

$f(x) = \sqrt{\log_{10}(x^2 - 5x + 7)}$  ప్రమేయం యొక్క ప్రదేశం

Options :

1. ✘  $[2,3]$

2. ✘  $\mathbb{R} - [2,3]$

3. ✔  $\mathbb{R} - (2,3)$

4. ✘  $(2,3)$

Question Number : 116 Question Id : 5103572212 Question Type : MCQ Option Shuffling : Yes  
Display Question Number : Yes Is Question Mandatory : No Single Line Question Option : No  
Option Orientation : Vertical

Correct Marks : 1 Wrong Marks : 0

### Algebraic and Geometrical Ability

బీజీయ, జ్యామితీయ సామర్థ్యత

The sum of the squares of the length of the intercepts made by the straight line  $13x - 15y - 195 = 0$  between the coordinate axes is

$13x - 15y - 195 = 0$  సరళ రేఖ నిరూపక అక్షాల మధ్య చేసే అంతర్బంధముల యొక్క పొడవుల  
వర్గముల మొత్తం

Options :

1. ✓ 394

2. ✗ 274

3. ✗ 58

4. ✗ 29

Question Number : 117 Question Id : 5103572213 Question Type : MCQ Option Shuffling : Yes  
Display Question Number : Yes Is Question Mandatory : No Single Line Question Option : No  
Option Orientation : Vertical

Correct Marks : 1 Wrong Marks : 0

### Algebraic and Geometrical Ability

బీజీయ, జ్యామితీయ సామర్థ్యత

The line L passes through the point (2, 3) and makes an angle  $45^\circ$  with x-axis. Then the equation of the line passing through the point (1, 2) and perpendicular to the line L, is

L అనే సరళ రేఖ (2,3) బిందువు గుండా పోతూ ధన x-అక్షముతో  $45^\circ$  కోణాన్ని చేస్తుంది. అప్పుడు (1,2) బిందువు గుండా పోతూ సరళ రేఖ L కి లంబంగా ఉండే సరళ రేఖ యొక్క సమీకరణం

**Options :**

1. ✘  $x + 2y - 5 = 0$

2. ✘  $3x - 2y + 1 = 0$

3. ✘  $2x - y = 0$

4. ✔  $x + y - 3 = 0$

Question Number : 118 Question Id : 5103572214 Question Type : MCQ Option Shuffling : Yes  
Display Question Number : Yes Is Question Mandatory : No Single Line Question Option : No  
Option Orientation : Vertical

Correct Marks : 1 Wrong Marks : 0

**Algebraic and Geometrical Ability**

**బీజీయ, జ్యామితీయ సామర్థ్యత**

$$\tan 960^\circ + \cos 510^\circ + \sec 750^\circ =$$

**Options :**

1. ✘  $\frac{7-\sqrt{3}}{2\sqrt{3}}$

2. ✘  $\frac{10-\sqrt{3}}{2\sqrt{3}}$

3. ✔  $\frac{7}{2\sqrt{3}}$

4. ✘  $\frac{13}{2\sqrt{3}}$

Question Number : 119 Question Id : 5103572215 Question Type : MCQ Option Shuffling : Yes  
Display Question Number : Yes Is Question Mandatory : No Single Line Question Option : No  
Option Orientation : Vertical

Correct Marks : 1 Wrong Marks : 0

Algebraic and Geometrical Ability

బీజీయ, జ్యామితీయ సామర్థ్యత

$$\tan \frac{\pi}{24} \cdot \tan \frac{3\pi}{24} \cdot \tan \frac{5\pi}{24} \cdot \tan \frac{6\pi}{24} \cdot \tan \frac{7\pi}{24} \cdot \tan \frac{8\pi}{24} \cdot \tan \frac{9\pi}{24} \cdot \tan \frac{11\pi}{24} =$$

Options :

1. ✘ 1

2. ✘  $\frac{1}{\sqrt{3}}$

3. ✔  $\sqrt{3}$

4. ✘  $2 + \sqrt{3}$

Question Number : 120 Question Id : 5103572216 Question Type : MCQ Option Shuffling : Yes  
Display Question Number : Yes Is Question Mandatory : No Single Line Question Option : No  
Option Orientation : Vertical

Correct Marks : 1 Wrong Marks : 0

Algebraic and Geometrical Ability

బీజీయ, జ్యామితీయ సామర్థ్యత

If  $x = \tan \theta + \sin \theta$  and  $y = \tan \theta - \sin \theta$  then  $(x^2 - y^2)^2 =$

$x = \tan \theta + \sin \theta$  మరియు  $y = \tan \theta - \sin \theta$  అయితే, అప్పుడు  $(x^2 - y^2)^2 =$

**Options :**

1. ✖  $4xy$

2. ✖  $8xy$

3. ✔  $16xy$

4. ✖  $32xy$

**Question Number : 121 Question Id : 5103572217 Question Type : MCQ Option Shuffling : Yes**

**Display Question Number : Yes Is Question Mandatory : No Single Line Question Option : No**

**Option Orientation : Vertical**

**Correct Marks : 1 Wrong Marks : 0**

**Algebraic and Geometrical Ability**

**బీజీయ, జ్యామితీయ సామర్థ్యత**

On the top of a tower there is a flag staff. At a point 200m from the foot of the tower, the angles of elevation of the top and bottom of the flag staff are respectively  $60^\circ$  and  $45^\circ$ . Then the length of the flag staff (in mts) is

ఒక గోపురం పైన భాగంపై ఒక జెండాకర్ర ఉంది. గోపురం పాదంనుండి 200 మీటర్ల దూరంలోని ఒక బిందువు వద్ద జెండాకర్ర యొక్క కొన మరియు అడుగు భాగాలు వరుసగా  $60^\circ$  మరియు  $45^\circ$  ఊర్ధ్వ కోణములు చేస్తున్నాయి. అప్పుడు జెండాకర్ర పొడవు (మీటర్లలో)

**Options :**

1. ✖  $200\sqrt{3}$

2. ✔  $200(\sqrt{3} - 1)$

3. ✖  $100\sqrt{3}$

4. ✖  $200(\sqrt{3} + 1)$

Question Number : 122 Question Id : 5103572218 Question Type : MCQ Option Shuffling : Yes

Display Question Number : Yes Is Question Mandatory : No Single Line Question Option : No

Option Orientation : Vertical

Correct Marks : 1 Wrong Marks : 0

**Algebraic and Geometrical Ability**

**బీజీయ, జ్యామితీయ సామర్థ్యత**

If  $x + y = 8$ , then  $x^3 + y^3 - x^2 - y^2 + 22xy =$

$x + y = 8$ , అయితే  $x^3 + y^3 - x^2 - y^2 + 22xy =$

**Options :**

1. ✔ 448

2. ✖ 256

3. ✖ 128

4. ✖ 64

Question Number : 123 Question Id : 5103572219 Question Type : MCQ Option Shuffling : Yes

Display Question Number : Yes Is Question Mandatory : No Single Line Question Option : No

Option Orientation : Vertical

Correct Marks : 1 Wrong Marks : 0

**Algebraic and Geometrical Ability**

**బీజీయ, జ్యామితీయ సామర్థ్యత**

If  $m, n$  are integers such that  $x^4 + 4x^2 + mx + n$  is a perfect square, then  $2m - 3n =$

$x^4 + 4x^2 + mx + n$  ఒక పరిపూర్ణ వర్గం అయ్యేటట్లుగా  $m, n$  లు పూర్ణాంకాలు అయితే, అప్పుడు  $2m - 3n =$

**Options :**

1. ✘ 0

2. ✘ -6

3. ✔ -12

4. ✘ -24

**Question Number : 124 Question Id : 5103572220 Question Type : MCQ Option Shuffling : Yes Display Question Number : Yes Is Question Mandatory : No Single Line Question Option : No Option Orientation : Vertical**

**Correct Marks : 1 Wrong Marks : 0**

**Algebraic and Geometrical Ability**

**బీజీయ, జ్యామితీయ సామర్థ్యత**

If  $x^3 + 2x^2 + ax + b$  has factors  $x + 1$  and  $x - 1$ , then  $(a, b) =$

$x^3 + 2x^2 + ax + b$ ,  $x + 1$  మరియు  $x - 1$ , అనే కారకము (కారణంకములను) కలిగి ఉంటే, అప్పుడు  $(a, b) =$

**Options :**

1. ✘  $(-1, 2)$

2. ✔  $(-1, -2)$

3. ✘  $(1, -2)$

4. ✘  $(-2, -1)$

Question Number : 125 Question Id : 5103572221 Question Type : MCQ Option Shuffling : Yes  
Display Question Number : Yes Is Question Mandatory : No Single Line Question Option : No  
Option Orientation : Vertical

Correct Marks : 1 Wrong Marks : 0

### Algebraic and Geometrical Ability

బీజీయ, జ్యామితీయ సామర్థ్యత

If  $ax^2 + bx + 6$  leaves the remainders 12 and 15 when divided by  $x - 3$  and  $x + 4$  respectively, then  $7a + 14b =$

$ax^2 + bx + 6$  ను  $x - 3$  మరియు  $x + 4$  లచే భాగించినప్పుడు వరుసగా 12 మరియు 15లను శేషముగా ఇస్తే, అప్పుడు  $7a + 14b =$

Options :

1. ✘  $\frac{9}{2}$

2. ✘  $\frac{17}{4}$

3. ✔  $\frac{27}{4}$

4. ✘  $\frac{11}{2}$

Question Number : 126 Question Id : 5103572222 Question Type : MCQ Option Shuffling : Yes  
Display Question Number : Yes Is Question Mandatory : No Single Line Question Option : No  
Option Orientation : Vertical

Correct Marks : 1 Wrong Marks : 0

## Algebraic and Geometrical Ability

### బీజీయ, జ్యామితీయ సామర్థ్యత

If the system of equations  $4x + 6y = 11$ ,  $2x + ay = 7$  has no solution, then the value of  $a$  is

$4x + 6y = 11$ ,  $2x + ay = 7$  సమీకరణాల వ్యవస్థ ఏ సాధనను కలిగి ఉండకపోతే అప్పుడు  $a$

యొక్క విలువ

Options :

1. ✘ 1

2. ✘ 2

3. ✔ 3

4. ✘ 4

Question Number : 127 Question Id : 5103572223 Question Type : MCQ Option Shuffling : Yes

Display Question Number : Yes Is Question Mandatory : No Single Line Question Option : No

Option Orientation : Vertical

Correct Marks : 1 Wrong Marks : 0

## Algebraic and Geometrical Ability

### బీజీయ, జ్యామితీయ సామర్థ్యత

The sum of a given two digit number  $N$  and the number obtained by interchanging the two digits is 110. If the digits of that number  $N$  differ by 2, then that number  $N$  is equal to

దత్త రెండు అంకెల సంఖ్య  $N$  మరియు దానిలోని రెండు అంకెలను వినిమయం (పరస్పరం మార్పు)

చేయగా రాబట్టే సంఖ్య యొక్క మొత్తం 110. ఆ సంఖ్య  $N$  లోని అంకెల భేదం 2 అయితే, అప్పుడు ఆ

సంఖ్య  $N =$

Options :

1. ✘ 86 or 68

2. ✘

75 or 57

3. ✘ 53 or 35

4. ✔ 64 or 46

Question Number : 128 Question Id : 5103572224 Question Type : MCQ Option Shuffling : Yes  
Display Question Number : Yes Is Question Mandatory : No Single Line Question Option : No  
Option Orientation : Vertical

Correct Marks : 1 Wrong Marks : 0

**Algebraic and Geometrical Ability**

**బీజీయ, జ్యామితీయ సామర్థ్యత**

The sum of multiples of 5 between 28 and 102 is

28 మరియు 102 ల మధ్య 5 యొక్క గుణిజముల మొత్తం

**Options :**

1. ✔ 975

2. ✘ 985

3. ✘ 895

4. ✘ 945

Question Number : 129 Question Id : 5103572225 Question Type : MCQ Option Shuffling : Yes  
Display Question Number : Yes Is Question Mandatory : No Single Line Question Option : No  
Option Orientation : Vertical

Correct Marks : 1 Wrong Marks : 0

## Algebraic and Geometrical Ability

### బీజీయ, జ్యామితీయ సామర్థ్యత

The 7<sup>th</sup> term of the series  $-3, 1, -\frac{1}{3}, \frac{1}{9}, \dots$  is

$-3, 1, -\frac{1}{3}, \frac{1}{9}, \dots$  శ్రేణి యొక్క 7 వ పదం

Options :

1. ✘  $\frac{1}{243}$

2. ✘  $\frac{1}{81}$

3. ✔  $-\frac{1}{243}$

4. ✘  $\frac{1}{729}$

Question Number : 130 Question Id : 5103572226 Question Type : MCQ Option Shuffling : Yes  
Display Question Number : Yes Is Question Mandatory : No Single Line Question Option : No  
Option Orientation : Vertical

Correct Marks : 1 Wrong Marks : 0

## Algebraic and Geometrical Ability

### బీజీయ, జ్యామితీయ సామర్థ్యత

If  $(2x + 3)^{10} = a_0 + a_1x + \dots + a_{10}x^{10}$ , then  $a_0 + a_2 + a_4 + \dots + a_{10} =$

$(2x + 3)^{10} = a_0 + a_1x + \dots + a_{10}x^{10}$  అయితే, అప్పుడు  $a_0 + a_2 + a_4 + \dots + a_{10} =$

Options :

1. ✘  $\frac{5^{10}}{2}$

2. ✘  $\frac{5^{10}-1}{2}$

3. ✓  $\frac{5^{10}+1}{2}$

4. ✘  $\frac{1}{2}$

Question Number : 131 Question Id : 5103572227 Question Type : MCQ Option Shuffling : Yes  
Display Question Number : Yes Is Question Mandatory : No Single Line Question Option : No  
Option Orientation : Vertical

Correct Marks : 1 Wrong Marks : 0

### Algebraic and Geometrical Ability

### బీజీయ, జ్యామితీయ సామర్థ్యత

If the coefficients of the second, third and fourth terms in the binomial expression of  $(1+x)^n$  are in arithmetical progression, then a value of n=

$(1+x)^n$  యొక్క ద్వీపద విస్తరణలోని రెండవ, మూడవ మరియు నాలుగవ పదముల గుణకములు  
అంఖశ్రేణిలో ఉంటే, అప్పుడు n యొక్క ఒక విలువ

Options :

1. ✘ 8

2. ✘ 6

3. ✓ 7

4. ✘ 9

Question Number : 132 Question Id : 5103572228 Question Type : MCQ Option Shuffling : Yes  
Display Question Number : Yes Is Question Mandatory : No Single Line Question Option : No  
Option Orientation : Vertical

Correct Marks : 1 Wrong Marks : 0

## Algebraic and Geometrical Ability

బీజీయ, జ్యామితీయ సామర్థ్యత

If  $A = \begin{bmatrix} 1 & 2 & 3 \\ 0 & 1 & 2 \\ 0 & 0 & 1 \end{bmatrix}$ ,  $B = \begin{bmatrix} x \\ y \\ z \end{bmatrix}$  and  $AB = \begin{bmatrix} 6 \\ 3 \\ 1 \end{bmatrix}$ , then  $x + y + z =$

$A = \begin{bmatrix} 1 & 2 & 3 \\ 0 & 1 & 2 \\ 0 & 0 & 1 \end{bmatrix}$ ,  $B = \begin{bmatrix} x \\ y \\ z \end{bmatrix}$  మరియు  $AB = \begin{bmatrix} 6 \\ 3 \\ 1 \end{bmatrix}$  అయితే, అప్పుడు  $x + y + z =$

Options :

1. ✘ 1

2. ✘ 2

3. ✘ 4

4. ✔ 3

Question Number : 133 Question Id : 5103572229 Question Type : MCQ Option Shuffling : Yes

Display Question Number : Yes Is Question Mandatory : No Single Line Question Option : No

Option Orientation : Vertical

Correct Marks : 1 Wrong Marks : 0

## Algebraic and Geometrical Ability

బీజీయ, జ్యామితీయ సామర్థ్యత

If A be a 2x2 matrix such that  $A \begin{bmatrix} 7 & 8 \\ 5 & 6 \end{bmatrix} = \begin{bmatrix} 3 & -4 \\ 2 & -3 \end{bmatrix}$ , then trace of A =

$A \begin{bmatrix} 7 & 8 \\ 5 & 6 \end{bmatrix} = \begin{bmatrix} 3 & -4 \\ 2 & -3 \end{bmatrix}$  అయ్యేటట్లుగా A ఒక 2 x 2 మాత్రిక అయితే, అప్పుడు A యొక్క జాడ

Options :

1. ✔  $\frac{1}{2}$

2. ✘

$$\frac{75}{2}$$

3. ✘  $-\frac{1}{2}$

4. ✘  $-\frac{75}{2}$

Question Number : 134 Question Id : 5103572230 Question Type : MCQ Option Shuffling : Yes

Display Question Number : Yes Is Question Mandatory : No Single Line Question Option : No

Option Orientation : Vertical

Correct Marks : 1 Wrong Marks : 0

**Algebraic and Geometrical Ability**

**బీజీయ, జ్యామితీయ సామర్థ్యత**

$$\lim_{n \rightarrow \infty} \left\{ \frac{1}{5 \cdot 9} + \frac{1}{9 \cdot 13} + \frac{1}{13 \cdot 17} + \dots + \frac{1}{(4n+1)(4n+5)} \right\} =$$

**Options :**

1. ✘ 0

2. ✘  $\frac{1}{5}$

3. ✔  $\frac{1}{20}$

4. ✘  $\frac{1}{36}$

Question Number : 135 Question Id : 5103572231 Question Type : MCQ Option Shuffling : Yes

Display Question Number : Yes Is Question Mandatory : No Single Line Question Option : No

Option Orientation : Vertical

Correct Marks : 1 Wrong Marks : 0

Algebraic and Geometrical Ability

బీజీయ, జ్యామితీయ సామర్థ్యత

The value of  $\frac{d}{dx}(x^x)$  at  $x = \frac{1}{e}$ , is

$x = \frac{1}{e}$  వద్ద  $\frac{d}{dx}(x^x)$  యొక్క విలువ

Options :

1. ✘  $\left(\frac{1}{e}\right)^{\frac{1}{e}}$

2. ✘  $e^{\frac{1}{e}}$

3. ✔ 0

4. ✘ 1

Question Number : 136 Question Id : 5103572232 Question Type : MCQ Option Shuffling : Yes

Display Question Number : Yes Is Question Mandatory : No Single Line Question Option : No

Option Orientation : Vertical

Correct Marks : 1 Wrong Marks : 0

Algebraic and Geometrical Ability

బీజీయ, జ్యామితీయ సామర్థ్యత

Two triangles have equal area. If their bases are in the ratio 3:4, then the ratio of altitudes drawn to their bases, in the same order is

రెండు త్రిభుజాలు సమానమైన వైశాల్యములను కలిగి ఉన్నాయి. వాటి ఆధారములు 3:4 నిష్పత్తిలో

ఉంటే, వాటి ఆధారములకు గీచిన ఉన్నతుల నిష్పత్తి అదే క్రమములో

Options :

1. ✔ 4:3

2. ✖ 3:4

3. ✖ 16:9

4. ✖ 9:16

Question Number : 137 Question Id : 5103572233 Question Type : MCQ Option Shuffling : Yes  
Display Question Number : Yes Is Question Mandatory : No Single Line Question Option : No  
Option Orientation : Vertical

Correct Marks : 1 Wrong Marks : 0

### Algebraic and Geometrical Ability

### బీజీయ, జ్యామితీయ సామర్థ్యత

If the lengths of the diagonals of a Rhombus are 9cm and 12cm, then its perimeter (in centimeters) is

ఒక సమ చతుర్భుజం యొక్క వికర్ణముల పొడవులు 9 సెం.మీ మరియు 12 సెం.మీ అయితే, అప్పుడు దాని చుట్టుకొలత (సెం.మీ లలో)

Options :

1. ✔ 30

2. ✖ 15

3. ✖ 60

4. ✖ 15/2

Question Number : 138 Question Id : 5103572234 Question Type : MCQ Option Shuffling : Yes  
Display Question Number : Yes Is Question Mandatory : No Single Line Question Option : No

Option Orientation : Vertical

Correct Marks : 1 Wrong Marks : 0

Algebraic and Geometrical Ability

బీజీయ, జ్యామితీయ సామర్థ్యత

The maximum number of common tangents that can be drawn to two circles which touch each other, is

ఒకదానిని మరొకటి (పరస్పరం) స్పృశించే రెండు వృత్తములకు గీయబడిన ఉమ్మడి స్పర్శ రేఖల గరిష్ఠ సంఖ్య

Options :

1. ✘ 1

2. ✘ 2

3. ✔ 3

4. ✘ 4

Question Number : 139 Question Id : 5103572235 Question Type : MCQ Option Shuffling : Yes

Display Question Number : Yes Is Question Mandatory : No Single Line Question Option : No

Option Orientation : Vertical

Correct Marks : 1 Wrong Marks : 0

Algebraic and Geometrical Ability

బీజీయ, జ్యామితీయ సామర్థ్యత

If the distance between the point  $(3, 0)$  and a point P is 5, then P cannot be

బిందువు  $(3,0)$  మరియు ఒక బిందువు P ల మధ్య దూరం 5 అయితే, అప్పుడు P కాజాలనిది

Options :

1. ✘  $(8, 0)$

2. ✘ (3, 5)

3. ✔ (0, 6)

4. ✘ (3, -5)

Question Number : 140 Question Id : 5103572236 Question Type : MCQ Option Shuffling : Yes  
Display Question Number : Yes Is Question Mandatory : No Single Line Question Option : No  
Option Orientation : Vertical

Correct Marks : 1 Wrong Marks : 0

### Algebraic and Geometrical Ability

### బీజీయ, జ్యామితీయ సామర్థ్యత

Which one of the following points is nearest to the origin?

ఈ క్రింది బిందువులలో ఏది మూలబిందువునకు అత్యంత దగ్గరలో ఉన్నది?

Options :

1. ✘ (1, 3)

2. ✔ (2, -1)

3. ✘ (2, -3)

4. ✘ (5, 0)

Question Number : 141 Question Id : 5103572237 Question Type : MCQ Option Shuffling : Yes  
Display Question Number : Yes Is Question Mandatory : No Single Line Question Option : No  
Option Orientation : Vertical

Correct Marks : 1 Wrong Marks : 0

## Statistical Ability

### సాంఖ్యిక సామర్థ్యత

The mean of the marks scored by a student in the first five papers is 72. If the marks scored in the sixth paper are also included, then the mean decreases by 7. Then the marks obtained by that student in the sixth paper is

ఒక విద్యార్థి మొదటి ఐదు పేపర్లలో తెచ్చుకున్న మార్కుల అంఖ మధ్యమము 72. ఆరవ పేపర్లో తెచ్చుకున్న మార్కులను కూడా చేర్చితే (కలిపితే) అప్పుడు అంఖ మధ్యమము 7 తగ్గుతుంది. అప్పుడు ఆ విద్యార్థి ఆరవ పేపర్లో తెచ్చుకున్న మార్కులు

#### Options :

1. ✓ 30

2. ✗ 45

3. ✗ 60

4. ✗ 75

Question Number : 142 Question Id : 5103572238 Question Type : MCQ Option Shuffling : Yes Display Question Number : Yes Is Question Mandatory : No Single Line Question Option : No Option Orientation : Vertical

Correct Marks : 1 Wrong Marks : 0

## Statistical Ability

### సాంఖ్యిక సామర్థ్యత

The median of 7, 8, 11, 10, 9, 6, 12, 13, 5, 14 is

7, 8, 11, 10, 9, 6, 12, 13, 5, 14 యొక్క మధ్యగతం

#### Options :

1. ✗ 9

2. ✓ 9.5

3. ✘ 10

4. ✘ 10.5

Question Number : 143 Question Id : 5103572239 Question Type : MCQ Option Shuffling : Yes  
Display Question Number : Yes Is Question Mandatory : No Single Line Question Option : No  
Option Orientation : Vertical

Correct Marks : 1 Wrong Marks : 0

Statistical Ability

సాంఖ్యిక సామర్థ్యత

If 76 and 72 are the mode and median of a data respectively, then the mean of the data is

ఒక దత్తాంశం యొక్క బాహుళకం మరియు మధ్యగతిం వరుసగా 76 మరియు 72 అయితే, అప్పుడు

ఆ దత్తాంశం అంక మధ్యమం

Options :

1. ✘ 68

2. ✘ 69

3. ✔ 70

4. ✘ 71

Question Number : 144 Question Id : 5103572240 Question Type : MCQ Option Shuffling : Yes  
Display Question Number : Yes Is Question Mandatory : No Single Line Question Option : No  
Option Orientation : Vertical

Correct Marks : 1 Wrong Marks : 0

## Statistical Ability

### సాంఖ్యిక సామర్థ్యత

The standard deviation of 12, 13, 14 is

12, 13, 14 యొక్క క్రమ విచలనము

Options :

1. ✓  $\sqrt{\frac{2}{3}}$

2. ✗  $\frac{\sqrt{2}}{3}$

3. ✗  $\frac{2}{\sqrt{3}}$

4. ✗  $\frac{2}{3}$

Question Number : 145 Question Id : 5103572241 Question Type : MCQ Option Shuffling : Yes

Display Question Number : Yes Is Question Mandatory : No Single Line Question Option : No

Option Orientation : Vertical

Correct Marks : 1 Wrong Marks : 0

## Statistical Ability

### సాంఖ్యిక సామర్థ్యత

If the variance of  $x_1, x_2, \dots, x_{50}$  is 7, then the variance of  $4x_1 + 5, 4x_2 + 5, \dots, 4x_{50} + 5$  is

$x_1, x_2, \dots, x_{50}$  యొక్క విస్తృతి 7 అయితే, అప్పుడు  $4x_1 + 5, 4x_2 + 5, \dots, 4x_{50} + 5$  యొక్క విస్తృతి

Options :

1. ✗ 7

2. ✗ 28

3. ✖ 56

4. ✔ 112

Question Number : 146 Question Id : 5103572242 Question Type : MCQ Option Shuffling : Yes  
Display Question Number : Yes Is Question Mandatory : No Single Line Question Option : No  
Option Orientation : Vertical

Correct Marks : 1 Wrong Marks : 0

Statistical Ability

సాంఖ్యిక సామర్థ్యత

If  $(x_i, y_i), i = 1, 2, \dots, 9, 10$  are the ranks of the variables X and Y respectively such that  $\sum(x_i - y_i)^2 = 30$ , then the rank correlation between the two variables is

$(x_i, y_i), i = 1, 2, \dots, 9, 10$  రెండు చల రాశుల ర్యాంకుల యొక్క  $\sum(x_i - y_i)^2 = 30$  అయితే, అప్పుడు ఆ రెండు చలరాశుల ర్యాంకుల సహసంబంధగుణకం

Options :

1. ✔  $\frac{9}{11}$

2. ✖  $\frac{10}{11}$

3. ✖  $\frac{9}{10}$

4. ✖  $\frac{8}{10}$

Question Number : 147 Question Id : 5103572243 Question Type : MCQ Option Shuffling : Yes  
Display Question Number : Yes Is Question Mandatory : No Single Line Question Option : No

Option Orientation : Vertical

Correct Marks : 1 Wrong Marks : 0

Statistical Ability

సాంఖ్యిక సామర్థ్యత

A coin is tossed and die is cast. What is the probability of getting tail on the coin and at least 3 on the die?

ఒక నాణాన్ని ఎగురవేసి ఒక పాచికను దోర్లించారు. ఆ నాణెంపైన బోరుసును మరియు ఆ పాచికపైన కనీసం 3 ను పొందగల సంభావ్యత

Options :

1. ✘  $1/5$

2. ✘  $1/4$

3. ✔  $1/3$

4. ✘  $1/2$

Question Number : 148 Question Id : 5103572244 Question Type : MCQ Option Shuffling : Yes

Display Question Number : Yes Is Question Mandatory : No Single Line Question Option : No

Option Orientation : Vertical

Correct Marks : 1 Wrong Marks : 0

Statistical Ability

సాంఖ్యిక సామర్థ్యత

A and B are two sets such that  $n(A) = 3$  and  $n(B) = 2$ . If a relation from A to B is selected at random, what is the probability that the relation will be a function?

$n(A) = 3$  మరియు  $n(B) = 2$  అయ్యేటట్లుగా A మరియు B లు రెండు సమితులు. A నుండి B కి

ఒక సంబంధాన్ని యాదృచ్ఛికంగా ఎంపిక చేస్తే ఆ సంబంధం ఒక ప్రమేయం కాగల సంభావ్యత ఎంత?

Options :

1. ✘  $1/2$

2. ✘ 1/4

3. ✘ 1/16

4. ✔ 1/8

Question Number : 149 Question Id : 5103572245 Question Type : MCQ Option Shuffling : Yes  
Display Question Number : Yes Is Question Mandatory : No Single Line Question Option : No  
Option Orientation : Vertical

Correct Marks : 1 Wrong Marks : 0

**Statistical Ability**  
**సాంఖ్యిక సామర్థ్యత**

When two dice are thrown, the probability of getting 11 as the sum of the numbers shown on the dice is

రెండు పాచికలు విసిరినప్పుడు ఆ పాచికలపైన పడే సంఖ్యల మొత్తం 11 కాగల సంభావ్యత

**Options :**

1. ✔ 1/18

2. ✘ 1/9

3. ✘ 5/36

4. ✘ 1/2

Question Number : 150 Question Id : 5103572246 Question Type : MCQ Option Shuffling : Yes  
Display Question Number : Yes Is Question Mandatory : No Single Line Question Option : No  
Option Orientation : Vertical

Correct Marks : 1 Wrong Marks : 0

## Statistical Ability

### సాంఖ్యిక సామర్థ్యత

Two events A and B have probabilities 0.25 and 0.5 respectively. The probability that both A and B occur is 0.14. What is the probability that neither A nor B occurs?

రెండు ఘటనలు A మరియు B లు వరుసగా 0.25 మరియు 0.5 సంభావ్యతలను కలిగి ఉన్నాయి. A మరియు B లు రెండు సంభవించే సంభావ్యత 0.14. A మరియు B లు రెండు సంభవం కాకపోవడానికి సంభావ్యత

Options :

1. ✘ 0.25

2. ✘ 0.61

3. ✘ 0.89

4. ✔ 0.39

## Communication Ability

Section Id :	51035733
Section Number :	3
Section type :	Online
Mandatory or Optional :	Mandatory
Number of Questions :	38
Number of Questions to be attempted :	38
Section Marks :	50
Display Number Panel :	Yes
Group All Questions :	Yes

Mark As Answered Required? : Yes  
Sub-Section Number : 1  
Sub-Section Id : 510357140  
Question Shuffling Allowed : Yes

Question Number : 151 Question Id : 5103572247 Question Type : MCQ Option Shuffling : Yes  
Display Question Number : Yes Is Question Mandatory : No Single Line Question Option : No  
Option Orientation : Vertical  
Correct Marks : 1 Wrong Marks : 0

**Choose the correct meaning of the word given:**

Abnegation

Options :

1. ✘ Abnormality
2. ✘ Achievement
3. ✔ Renunciation
4. ✘ Reluctance

Question Number : 152 Question Id : 5103572248 Question Type : MCQ Option Shuffling : Yes  
Display Question Number : Yes Is Question Mandatory : No Single Line Question Option : No  
Option Orientation : Vertical  
Correct Marks : 1 Wrong Marks : 0

**Choose the correct meaning of the word given:**

Profligate

Options :

1. ✘ Immortal

2. ✘ Immediate

3. ✔ Immoral

4. ✘ Important

Question Number : 153 Question Id : 5103572249 Question Type : MCQ Option Shuffling : Yes  
Display Question Number : Yes Is Question Mandatory : No Single Line Question Option : No  
Option Orientation : Vertical

Correct Marks : 1 Wrong Marks : 0

**Choose the correct meaning of the word given:**

Cajole

**Options :**

1. ✔ Persuade

2. ✘ Reject

3. ✘ Escape

4. ✘ Direct

Question Number : 154 Question Id : 5103572250 Question Type : MCQ Option Shuffling : Yes  
Display Question Number : Yes Is Question Mandatory : No Single Line Question Option : No  
Option Orientation : Vertical

Correct Marks : 1 Wrong Marks : 0

## Choose the correct meaning of the word given:

Clandestine

Options :

1. ✘ clear
2. ✘ common
3. ✘ rare
4. ✔ secret

Question Number : 155 Question Id : 5103572251 Question Type : MCQ Option Shuffling : Yes  
Display Question Number : Yes Is Question Mandatory : No Single Line Question Option : No  
Option Orientation : Vertical

Correct Marks : 1 Wrong Marks : 0

## Choose the correct meaning of the word given:

Disparate

Options :

1. ✔ Different
2. ✘ Diffused
3. ✘ Desperate
4. ✘ Distilled

Question Number : 156 Question Id : 5103572252 Question Type : MCQ Option Shuffling : Yes

Display Question Number : Yes Is Question Mandatory : No Single Line Question Option : No  
Option Orientation : Vertical

Correct Marks : 1 Wrong Marks : 0

**Choose the correct meaning of the word given:**

Succumb

**Options :**

1. ✘ defend
2. ✘ overcome
3. ✘ struggle
4. ✔ surrender

Question Number : 157 Question Id : 5103572253 Question Type : MCQ Option Shuffling : Yes  
Display Question Number : Yes Is Question Mandatory : No Single Line Question Option : No  
Option Orientation : Vertical

Correct Marks : 1 Wrong Marks : 0

**Fill in the blank choosing the correct word:**

As I can't hide my views, I shall \_\_\_\_\_ my mind.

**Options :**

1. ✘ tell
2. ✔ speak
3. ✘ show
4. ✘ talk

Question Number : 158 Question Id : 5103572254 Question Type : MCQ Option Shuffling : Yes  
Display Question Number : Yes Is Question Mandatory : No Single Line Question Option : No  
Option Orientation : Vertical

Correct Marks : 1 Wrong Marks : 0

**Fill in the blank choosing the correct word:**

This is the best \_\_\_\_\_ for the construction

**Options :**

1. ✘ sight

2. ✘ cite

3. ✘ slight

4. ✔ site

Question Number : 159 Question Id : 5103572255 Question Type : MCQ Option Shuffling : Yes  
Display Question Number : Yes Is Question Mandatory : No Single Line Question Option : No  
Option Orientation : Vertical

Correct Marks : 1 Wrong Marks : 0

**Fill in the blank choosing the correct word:**

The weather will clear \_\_\_\_\_ soon.

**Options :**

1. ✘ out

2. ✔ up

3. ✘ over

4. ✘ on

**Question Number : 160 Question Id : 5103572256 Question Type : MCQ Option Shuffling : Yes Display Question Number : Yes Is Question Mandatory : No Single Line Question Option : No Option Orientation : Vertical**

**Correct Marks : 1 Wrong Marks : 0**

**Fill in the blank choosing the correct word:**

Would you mind \_\_\_\_\_ the window?

**Options :**

1. ✔ opening

2. ✘ to open

3. ✘ to have opened

4. ✘ to have been opened

**Question Number : 161 Question Id : 5103572257 Question Type : MCQ Option Shuffling : Yes Display Question Number : Yes Is Question Mandatory : No Single Line Question Option : No Option Orientation : Vertical**

**Correct Marks : 1 Wrong Marks : 0**

**Choose the correct answer:**

Bandwidth

**Options :**

1. ✘ width of a computer

2. ✘ band used to wrap up the components of a computer
3. ✔ maximum amount of data that can travel a communication path
4. ✘ horizontal width of the monitor

**Question Number : 162 Question Id : 5103572258 Question Type : MCQ Option Shuffling : Yes Display Question Number : Yes Is Question Mandatory : No Single Line Question Option : No Option Orientation : Vertical**

**Correct Marks : 1 Wrong Marks : 0**

**Choose the correct answer:**

Patent refers to

**Options :**

1. ✘ Right for using or selling an investment
2. ✔ Right for using or selling an invention
3. ✘ Right for using or selling an institution
4. ✘ Right for using or selling integrated circuits

**Question Number : 163 Question Id : 5103572259 Question Type : MCQ Option Shuffling : Yes Display Question Number : Yes Is Question Mandatory : No Single Line Question Option : No Option Orientation : Vertical**

**Correct Marks : 1 Wrong Marks : 0**

**Choose the correct answer:**

The act of finding and correcting errors in a computer programme is called

**Options :**

1. ✓ Debugging

2. ✘ Rectifying

3. ✘ Resetting

4. ✘ Debunking

**Question Number : 164 Question Id : 5103572260 Question Type : MCQ Option Shuffling : Yes**

**Display Question Number : Yes Is Question Mandatory : No Single Line Question Option : No**

**Option Orientation : Vertical**

**Correct Marks : 1 Wrong Marks : 0**

**Choose the correct answer:**

In digital storage 1,024 megabytes is a

**Options :**

1. ✘ terabyte

2. ✓ gigabyte

3. ✘ kilobyte

4. ✘ petabyte

**Question Number : 165 Question Id : 5103572261 Question Type : MCQ Option Shuffling : Yes**

**Display Question Number : Yes Is Question Mandatory : No Single Line Question Option : No**

**Option Orientation : Vertical**

**Correct Marks : 1 Wrong Marks : 0**

**Choose the correct answer:**

The members in the meeting could not come to a \_\_\_\_\_, and so the meeting was adjourned.

**Options :**

1. ✓ consensus
2. ✗ agreement
3. ✗ criticism
4. ✗ minutes

Question Number : 166 Question Id : 5103572262 Question Type : MCQ Option Shuffling : Yes

Display Question Number : Yes Is Question Mandatory : No Single Line Question Option : No

Option Orientation : Vertical

Correct Marks : 1 Wrong Marks : 0

**Choose the correct answer:**

The amount a business earns after expenses

**Options :**

1. ✗ gross profit
2. ✗ gross income
3. ✓ profit
4. ✗ revenue

Question Number : 167 Question Id : 5103572263 Question Type : MCQ Option Shuffling : Yes

**Display Question Number : Yes Is Question Mandatory : No Single Line Question Option : No  
Option Orientation : Vertical**

**Correct Marks : 1 Wrong Marks : 0**

**Choose the correct answer:**

The term associated with all the financial institutions of New York, including the stock exchange

**Options :**

1. ✘ Sensex
2. ✘ Broadway
3. ✔ Wall Street
4. ✘ American Stock Market

**Question Number : 168 Question Id : 5103572264 Question Type : MCQ Option Shuffling : Yes  
Display Question Number : Yes Is Question Mandatory : No Single Line Question Option : No  
Option Orientation : Vertical**

**Correct Marks : 1 Wrong Marks : 0**

**Choose the correct answer:**

Burnout refers to

**Options :**

1. ✔ Getting tired and exhausted in pursuit of excellence.
2. ✘ Getting burnt in a fire accident of a company.
3. ✘ A furnace functioning technology.

4. ✘ A device to put off fire in a fire accident in a company.

Question Number : 169 Question Id : 5103572265 Question Type : MCQ Option Shuffling : Yes  
Display Question Number : Yes Is Question Mandatory : No Single Line Question Option : No  
Option Orientation : Vertical

Correct Marks : 1 Wrong Marks : 0

**Choose the correct answer:**

Conciliator

**Options :**

1. ✔ a trusted third party for negotiations
2. ✘ a console in a lab
3. ✘ a person concealing the information
4. ✘ a troublemaker

Question Number : 170 Question Id : 5103572266 Question Type : MCQ Option Shuffling : Yes  
Display Question Number : Yes Is Question Mandatory : No Single Line Question Option : No  
Option Orientation : Vertical

Correct Marks : 1 Wrong Marks : 0

**Choose the correct answer:**

A market in which share prices fall 20% or more from recent highs

**Options :**

1. ✔ Bear Market
2. ✘ Bull Market

3. ✘ Black Market

4. ✘ Flea Market

**Question Number : 171 Question Id : 5103572267 Question Type : MCQ Option Shuffling : Yes Display Question Number : Yes Is Question Mandatory : No Single Line Question Option : No Option Orientation : Vertical**

**Correct Marks : 1 Wrong Marks : 0**

**Choose the correct answer:**

Boy: Can I take my chocolate box?

Mother: Here you are.

According to the conversation, the mother \_\_\_\_\_

**Options :**

1. ✘ asked the boy to wait there

2. ✔ gave the box to the boy

3. ✘ asked the boy what he was doing there

4. ✘ scolded the boy as he asked for the box

**Question Number : 172 Question Id : 5103572268 Question Type : MCQ Option Shuffling : Yes Display Question Number : Yes Is Question Mandatory : No Single Line Question Option : No Option Orientation : Vertical**

**Correct Marks : 1 Wrong Marks : 0**

**Choose the correct answer:**

A: Fancy a pizza?

B: That's great, cheers, pal.

In this conversation, B \_\_\_\_\_

**Options :**

1. ✘ is suggesting that pizza would be expensive.
2. ✔ is thanking A for the offer.
3. ✘ is not clear about accepting the offer.
4. ✘ is undecided about A's offer

Question Number : 173 Question Id : 5103572269 Question Type : MCQ Option Shuffling : Yes  
Display Question Number : Yes Is Question Mandatory : No Single Line Question Option : No  
Option Orientation : Vertical

Correct Marks : 1 Wrong Marks : 0

**Choose the correct answer:**

Alcoholism is a(n)\_\_\_\_\_ problem in colleges.

**Options :**

1. ✘ running
2. ✔ ongoing
3. ✘ going on
4. ✘ heading

Question Number : 174 Question Id : 5103572270 Question Type : MCQ Option Shuffling : Yes  
Display Question Number : Yes Is Question Mandatory : No Single Line Question Option : No  
Option Orientation : Vertical

Correct Marks : 1 Wrong Marks : 0

**Choose the correct answer:**

'If I were your wife, I would put poison in your coffee'. This sentence

**Options :**

1. ✓ expresses an impossible condition
2. ✗ speaks about a probable state
3. ✗ expresses justifiable anger
4. ✗ implies a different situation

Question Number : 175 Question Id : 5103572271 Question Type : MCQ Option Shuffling : Yes  
Display Question Number : Yes Is Question Mandatory : No Single Line Question Option : No  
Option Orientation : Vertical

Correct Marks : 1 Wrong Marks : 0

**Choose the correct answer:**

A: May be the boss is trying to change

B: And may be pigs can fly.

In the above dialogue, B expresses his \_\_\_\_\_.

**Options :**

1. ✓ disbelief

2. ✘ distaste

3. ✘ happiness

4. ✘ surprise

**Question Number : 176 Question Id : 5103572272 Question Type : MCQ Option Shuffling : Yes Display Question Number : Yes Is Question Mandatory : No Single Line Question Option : No Option Orientation : Vertical**

**Correct Marks : 1 Wrong Marks : 0**

**Choose the correct answer:**

Prem asked, "Raghu, where do you live?"

Identify the sentence rewritten in Indirect speech.

Prem asked Raghu \_\_\_\_\_

**Options :**

1. ✘ where did he live

2. ✔ where he lived

3. ✘ where he had lived

4. ✘ where he is living

**Question Number : 177 Question Id : 5103572273 Question Type : MCQ Option Shuffling : Yes Display Question Number : Yes Is Question Mandatory : No Single Line Question Option : No Option Orientation : Vertical**

**Correct Marks : 1 Wrong Marks : 0**

**Choose the correct answer:**

'I wish I hadn't said those words'. The above sentence implies that the speaker actually

**Options :**

1. ✘ didn't say those words.
2. ✘ was fumbling for words.
3. ✘ wanted to say those words.
4. ✔ said those words.

**Question Number : 178 Question Id : 5103572274 Question Type : MCQ Option Shuffling : Yes**

**Display Question Number : Yes Is Question Mandatory : No Single Line Question Option : No**

**Option Orientation : Vertical**

**Correct Marks : 1 Wrong Marks : 0**

**Fill in the blanks with the appropriate phrase/verb/preposition:**

Abdul \_\_\_\_\_ to be a doctor.

**Options :**

1. ✘ wanting
2. ✘ will wants
3. ✔ wants
4. ✘ want

Question Number : 179 Question Id : 5103572275 Question Type : MCQ Option Shuffling : Yes  
Display Question Number : Yes Is Question Mandatory : No Single Line Question Option : No  
Option Orientation : Vertical

Correct Marks : 1 Wrong Marks : 0

**Fill in the blanks with the appropriate phrase/verb/preposition:**

Can you lend me your cycle? ' \_\_\_\_\_ '

**Options :**

1. ✘ Yes, here we go!

2. ✘ Yes, you can.

3. ✔ Yes, here it is!

4. ✘ Yes, you are ok!

Question Number : 180 Question Id : 5103572276 Question Type : MCQ Option Shuffling : Yes  
Display Question Number : Yes Is Question Mandatory : No Single Line Question Option : No  
Option Orientation : Vertical

Correct Marks : 1 Wrong Marks : 0

**Fill in the blanks with the appropriate phrase/verb/preposition:**

He used to visit us every week but he \_\_\_\_\_ now.

**Options :**

1. ✘ will rarely come

2. ✘ rarely come

3. ✓ rarely comes

4. ✗ rarely came now

Question Number : 181 Question Id : 5103572277 Question Type : MCQ Option Shuffling : Yes  
Display Question Number : Yes Is Question Mandatory : No Single Line Question Option : No  
Option Orientation : Vertical

Correct Marks : 1 Wrong Marks : 0

**Fill in the blanks with the appropriate phrase/verb/preposition:**

I haven't had a call from her \_\_\_\_\_ last Wednesday.

**Options :**

1. ✗ on

2. ✗ from

3. ✗ over

4. ✓ since

Question Number : 182 Question Id : 5103572278 Question Type : MCQ Option Shuffling : Yes  
Display Question Number : Yes Is Question Mandatory : No Single Line Question Option : No  
Option Orientation : Vertical

Correct Marks : 1 Wrong Marks : 0

**Fill in the blanks with the appropriate phrase/verb/preposition:**

A cake \_\_\_\_\_ by my mother yesterday.

**Options :**

1. ✗ made

2. ✓ was made

3. ✗ is made

4. ✗ has been made

**Question Number : 183 Question Id : 5103572279 Question Type : MCQ Option Shuffling : Yes  
Display Question Number : Yes Is Question Mandatory : No Single Line Question Option : No  
Option Orientation : Vertical**

**Correct Marks : 1 Wrong Marks : 0**

**Fill in the blanks with the appropriate phrase/verb/preposition:**

This service should be available to all \_\_\_\_\_ their age.

**Options :**

1. ✗ regardless

2. ✗ despite of

3. ✓ irrespective of

4. ✗ without regard of

**Question Number : 184 Question Id : 5103572280 Question Type : MCQ Option Shuffling : Yes  
Display Question Number : Yes Is Question Mandatory : No Single Line Question Option : No  
Option Orientation : Vertical**

**Correct Marks : 1 Wrong Marks : 0**

**Fill in the blanks with the appropriate phrase/verb/preposition:**

The prophet preached not to hanker \_\_\_\_\_ material benefits.

**Options :**

1. ✘ before

2. ✔ after

3. ✘ for

4. ✘ about

**Question Number : 185 Question Id : 5103572281 Question Type : MCQ Option Shuffling : Yes**

**Display Question Number : Yes Is Question Mandatory : No Single Line Question Option : No**

**Option Orientation : Vertical**

**Correct Marks : 1 Wrong Marks : 0**

**Fill in the blanks with the appropriate phrase/verb/preposition:**

Every morning, he prays \_\_\_\_\_ god.

**Options :**

1. ✘ for

2. ✘ by

3. ✘ about

4. ✔ to

**Sub-Section Number :**

2

**Sub-Section Id :**

510357141

**Question Shuffling Allowed :**

Yes

**Question Id : 5103572282 Question Type : COMPREHENSION Sub Question Shuffling Allowed :**

**Yes Group Comprehension Questions : No**

**Question Numbers : (186 to 190)**

Question Label : Comprehension

**Read the following passage and answer questions**

It is essential to build sustainability criteria into the supply chain of any green fuel project in order to ensure that there is no adverse effect on the surrounding environment and social structures. The report produced by the investors expresses concern that many companies may not be fully aware of the potential pitfalls in the biofuel sector. Production of corn and soya beans has increased dramatically in the last few years as an eco-friendly alternative to fossil fuels but environmental and human rights campaigners are worried that this will lead to destruction of rain forests. Food prices could also go up as there is increased competition for crops as both foodstuff and sources of fuel. The UN has warned that biofuels could have dangerous side effects and said that steps need to be taken to make sure that land converted to grow biofuels does not damage the environment or cause civil unrest. There is already great concern about palm oil, which is used in many foods in addition to being an important biofuel, as rain forests are being cleared in some countries and people driven from their homes to create palm oil plantations. An analyst and author of the investors' report says that biofuels are not a cure for climate change but they can play their part as long as governments and companies manage the social and environmental impacts thoroughly.

**Sub questions**

**Question Number : 186 Question Id : 5103572283 Question Type : MCQ Option Shuffling : Yes**

**Display Question Number : Yes Is Question Mandatory : No Single Line Question Option : No**

**Option Orientation : Vertical**

**Correct Marks : 1 Wrong Marks : 0**

According to the passage which statement is true?

**Options :**

1. ✘ Society has sufficient awareness about the pros and cons of biofuels
2. ✘ Biofuels do not have any negative side effects
3. ✘ Palm oil plantations are fully sustainable

4. ✓ Sustainability criteria have to be built into green fuel projects

**Question Number : 187 Question Id : 5103572284 Question Type : MCQ Option Shuffling : Yes Display Question Number : Yes Is Question Mandatory : No Single Line Question Option : No Option Orientation : Vertical**

**Correct Marks : 1 Wrong Marks : 0**

The UN has NOT issued cautions regarding

**Options :**

1. ✗ civil unrest
2. ✓ armed environmental activism
3. ✗ the dangerous side effects of biofuels
4. ✗ possible environmental damage

**Question Number : 188 Question Id : 5103572285 Question Type : MCQ Option Shuffling : Yes Display Question Number : Yes Is Question Mandatory : No Single Line Question Option : No Option Orientation : Vertical**

**Correct Marks : 1 Wrong Marks : 0**

According to the passage palm oil is

**Options :**

1. ✓ edible besides being used as a biofuel
2. ✗ non-edible but used as biodiesel
3. ✗ produced in the rain forest regions

4. ✘ non-edible and non-sustainable biofuel

**Question Number : 189 Question Id : 5103572286 Question Type : MCQ Option Shuffling : Yes Display Question Number : Yes Is Question Mandatory : No Single Line Question Option : No Option Orientation : Vertical**

**Correct Marks : 1 Wrong Marks : 0**

In the context of this passage, why are rain forests being cleared?

**Options :**

1. ✘ to send dangerous people away

2. ✘ to exploit people

3. ✔ to grow palm oil plantations

4. ✘ to cause civil unrest

**Question Number : 190 Question Id : 5103572287 Question Type : MCQ Option Shuffling : Yes Display Question Number : Yes Is Question Mandatory : No Single Line Question Option : No Option Orientation : Vertical**

**Correct Marks : 1 Wrong Marks : 0**

Which word in the passage means “hidden dangers”?

**Options :**

1. ✘ concerns

2. ✘ side effects

3. ✔ pitfalls

#### 4. ✖ adverse effects

<b>Sub-Section Number :</b>	3
<b>Sub-Section Id :</b>	510357142
<b>Question Shuffling Allowed :</b>	Yes

**Question Id : 5103572288 Question Type : COMPREHENSION Sub Question Shuffling Allowed :**

**Yes Group Comprehension Questions : No**

**Question Numbers : (191 to 195)**

Question Label : Comprehension

**Read the following passage and answer questions**

Ryokan, the Zen teacher, was requested by his sister-in-law to come to her house and talk to her son.

“He does not work, squanders his father’s money in wild parties and is neglecting the estate,” she complained. “If he does not reform, we will be ruined.”

Ryokan went to his brother’s house and met his nephew who was genuinely pleased to see him. The two of them had spent many happy hours together before Ryokan had turned to Zen and entered the monastery.

The young man knew why his uncle had come and braced himself for the scolding he was sure he would receive. But Ryokan said not a word in rebuke, the whole day.

The next morning when it was time for him to go, he put on his garments and then said to his nephew: “Will you help me tie the thongs of my sandals” My hands shake and I cannot do it.”

His nephew helped him willingly.

“Thank you,” said Ryokan. “A man becomes older and feebler day by day. You remember how strong and robust I used to be?”

“I do,” said his nephew, thoughtfully. “I do indeed remember how you used to be.”

It was the moment of truth for him. He suddenly realized that his mother and all those who had looked after him had become old and that it was now his turn to look after them and to take on the responsibilities of the household and the community.

He gave up his dissolute life forever.

**Sub questions**

Question Number : 191 Question Id : 5103572289 Question Type : MCQ Option Shuffling : Yes  
Display Question Number : Yes Is Question Mandatory : No Single Line Question Option : No  
Option Orientation : Vertical

Correct Marks : 1 Wrong Marks : 0

Ryokan was requested by his sister-in-law to visit her home to

Options :

1. ✘ spend a vacation
2. ✘ help her in the works
3. ✔ reform her son
4. ✘ please her son

Question Number : 192 Question Id : 5103572290 Question Type : MCQ Option Shuffling : Yes  
Display Question Number : Yes Is Question Mandatory : No Single Line Question Option : No  
Option Orientation : Vertical

Correct Marks : 1 Wrong Marks : 0

The nephew of the Zen teacher expected that his uncle would \_\_\_\_\_

Options :

1. ✘ help him
2. ✘ please him
3. ✔ rebuke him
4. ✘ support him

**Question Number : 193 Question Id : 5103572291 Question Type : MCQ Option Shuffling : Yes Display Question Number : Yes Is Question Mandatory : No Single Line Question Option : No Option Orientation : Vertical**

**Correct Marks : 1 Wrong Marks : 0**

The Zen teacher's hands were shivering when he tried to tie the thongs of his sandals because \_\_\_\_\_

**Options :**

1. ✘ he was merely acting
2. ✘ it was a cold day
3. ✔ he was old
4. ✘ his sister didn't help him

**Question Number : 194 Question Id : 5103572292 Question Type : MCQ Option Shuffling : Yes Display Question Number : Yes Is Question Mandatory : No Single Line Question Option : No Option Orientation : Vertical**

**Correct Marks : 1 Wrong Marks : 0**

The way the Zen teacher taught his nephew is \_\_\_\_\_

**Options :**

1. ✘ complex and difficult
2. ✘ direct and painful
3. ✔ simple and striking
4. ✘ indecent and disturbing

**Question Number : 195 Question Id : 5103572293 Question Type : MCQ Option Shuffling : Yes Display Question Number : Yes Is Question Mandatory : No Single Line Question Option : No Option Orientation : Vertical**

**Correct Marks : 1 Wrong Marks : 0**

The word 'dissolute' means

**Options :**

1. ✘ chaste
2. ✔ unprincipled
3. ✘ respectful
4. ✘ pure

**Sub-Section Number :** 4  
**Sub-Section Id :** 510357143  
**Question Shuffling Allowed :** Yes

**Question Id : 5103572294 Question Type : COMPREHENSION Sub Question Shuffling Allowed : Yes Group Comprehension Questions : No**

**Question Numbers : (196 to 200)**

**Question Label : Comprehension**

### Read the following passage and answer questions

Way back in 1960s, when my generation was in the teens, long before any economist wrote about globalisation, Marshal McLuhan wrote a bestseller – *The Medium is the Message* – and coined the term global village. The book is full of quotable quotes about modern media, advertising, communication, politics, technology and so on.

It was a couple of decades after McLuhan’s book was published that the word ‘globalisation’ captured the imagination of most people as they began to travel more easily. Television, as McLuhan reminded us, had brought the world into our living room. “Everybody experiences far more than he understands. Yet it is experience, rather than understanding, that influences behaviour”, he wrote. Television had brought experience closer home, without the required understanding of that experience.

### Sub questions

**Question Number : 196 Question Id : 5103572295 Question Type : MCQ Option Shuffling : Yes Display Question Number : Yes Is Question Mandatory : No Single Line Question Option : No Option Orientation : Vertical**

**Correct Marks : 1 Wrong Marks : 0**

The author of the passage was born in the

**Options :**

1. ✓ 1950s
2. ✗ 1960s
3. ✗ 1970s
4. ✗ 1980s

**Question Number : 197 Question Id : 5103572296 Question Type : MCQ Option Shuffling : Yes Display Question Number : Yes Is Question Mandatory : No Single Line Question Option : No Option Orientation : Vertical**

**Correct Marks : 1 Wrong Marks : 0**

McLuhan’s book does NOT deal with

**Options :**

1. ✘ Communication
2. ✘ Technology
3. ✔ Artificial Intelligence
4. ✘ Modern media

**Question Number : 198 Question Id : 5103572297 Question Type : MCQ Option Shuffling : Yes Display Question Number : Yes Is Question Mandatory : No Single Line Question Option : No Option Orientation : Vertical**

**Correct Marks : 1 Wrong Marks : 0**

The term globalisation caught people's imagination in the

**Options :**

1. ✘ 1960s
2. ✔ 1980s
3. ✘ 1970s
4. ✘ 1990s

**Question Number : 199 Question Id : 5103572298 Question Type : MCQ Option Shuffling : Yes Display Question Number : Yes Is Question Mandatory : No Single Line Question Option : No Option Orientation : Vertical**

**Correct Marks : 1 Wrong Marks : 0**

Television \_\_\_\_\_ the living room.

**Options :**

1. ✘ transported us out of
2. ✘ brought advertisements to
3. ✘ confined us to
4. ✔ brought the world into

**Question Number : 200 Question Id : 5103572299 Question Type : MCQ Option Shuffling : Yes Display Question Number : Yes Is Question Mandatory : No Single Line Question Option : No Option Orientation : Vertical**

**Correct Marks : 1 Wrong Marks : 0**

\_\_\_\_\_ forms the basis of behaviour.

**Options :**

1. ✘ Knowledge
2. ✘ Understanding
3. ✔ Experience
4. ✘ Intuition