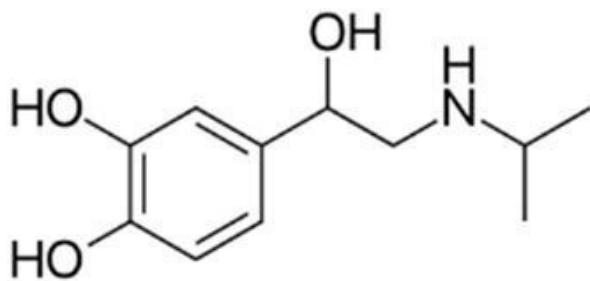


Participant ID	
Participant Name	
Test Center Name	
Test Date	08/06/2024
Time Subject	2:00 PM - 5:00 PM
	GPAT08June24

Section : Section A

Q.1 The below structure represent the drug:



- Ans ☒ A. Isoprenaline
☒ B. Amphetamine
☒ C. Norepinephrine
☒ D. Salbutamol

Q.2 Chikusetsu saponin is present in:

- Ans ☒ A. Senega
☒ B. Quillia
☒ C. Ginseng
☒ D. Liquorice

Q.3What is the best time to collect the medicinal bark material:

- Ans ☒ A. Post flowering
☒ B. Before the leaf falls
☒ C. Pre flowering
☒ D. After the leaf falls

Q.4Which of the following steps are not involved in gravimetric analysis:

- Ans ☒ A. Precipitation
☒ B. Indicator
☒ C. Digestion
☒ D. Filtration

Q.5Which of the following is a meta directing group:

- Ans ☒ A. F
☒ B. NHCH_3
☒ C. NH_2
☒ D. CF_3

Q.6The Wilson's disease is a rare inherited disorder due to accumulation in brain, liver and other vital organs of:

- Ans ☒ A. Iodine
☒ B. Copper
☒ C. Iron
☒ D. Calcium

Q.7The starting raw material for synthesis of lignocaine is:

- Ans ☒ A. 2,6-Xylidine
☒ B. p-Nitroacetophenone
☒ C. 4-Amino-3-Nitroanisole
☒ D. 4-Chlorobenzyl cyanide

Q.8 Coating of Eudragit NE40D on tablets is done to prepare:

- Ans ☒ A. Sublingual tablets
☒ B. IR tablets
☒ C. CR tablets
☒ D. Buccal tablets

Question Type : **MCQ**
Question ID : **50886133597**
Status : **Not Answered**
Chosen Option : --

Q.9 During compression of tablets, dwell time is:

- Ans ☒ A. Time it takes for the punches to punch tablet
☒ B. Time it takes for the punches to stop moving vertically and to achieve maximum penetration in the die under the primary compression rollers
☒ C. Time it takes for the punches to eject the tablets
☒ D. Time it takes for the punches to eject tablet under the primary compression rollers

Question Type : **MCQ**
Question ID : **50886133600**
Status : **Not Answered**
Chosen Option : --

Q.10 According to the SAR of Chloroquine electron:

- Ans ☒ A. Withdrawing group at 6th position of the quinoline ring is important for the inhibition of hemozoin formation
☒ B. Donating group at 7th position of the quinoline ring is important for the inhibition of hemozoin formation
☒ C. Donating group at 6th position of the quinoline ring is important for the inhibition of hemozoin formation
☒ D. Withdrawing group at 7th position of the quinoline ring is important for the inhibition of hemozoin formation

Question Type : **MCQ**
Question ID : **50886133685**
Status : **Not Answered**
Chosen Option : --

Q.11 Size of a pilot plant batch is:

- Ans ☒ A. 1/10th of marketing batch
☒ B. 1/5th of production batch
☒ C. 1/5th of marketing batch
☒ D. 1/10th of production batch

Question Type : **MCQ**
Question ID : **50886133580**
Status : **Not Answered**
Chosen Option : --

Q.12 Nitrostat® is an example of:

- Ans ☒ A. CR tablet
☒ B. Bolus tablet
☒ C. Sublingual tablet
☒ D. Effervescent tablet

Question Type : MCQ
Question ID : 50886133594
Status : Not Answered
Chosen Option : --

Q.13 The dried juice of Pterocarpus marsupium belongs to the family:

- Ans ☒ A. Leguminosae
☒ B. Asteraceae
☒ C. Rosaceae
☒ D. Liliaceae

Question Type : MCQ
Question ID : 50886133740
Status : Not Answered
Chosen Option : --

Q.14 Spin Quantum number of ^{13}C NMR is:

- Ans ☒ A. 1/4
☒ B. 1/2
☒ C. 3/2
☒ D. 1/3

Question Type : MCQ
Question ID : 50886133678
Status : Not Answered
Chosen Option : --

Q.15 The rate limiting step for the absorption of controlled release tablet is the:

- Ans ☒ A. Metabolism of the drug
☒ B. Excretion of the drug
☒ C. Dissolution of the drug
☒ D. Distribution of the drug

Question Type : MCQ
Question ID : 50886133509
Status : Not Answered
Chosen Option : --

Q.16 Which antibiotic undergoes light catalysed autoxidation:

- Ans ☒ A. Polyene antibiotics
☒ B. Beta lactum antibiotics
☒ C. Sugar derived antibiotics
☒ D. Macrolide antibiotics

Question Type : MCQ
Question ID : 50886133475
Status : Not Answered
Chosen Option : --

Q.17 Which of the following is not a method for solubility enhancement:

- Ans ☒ A. Crystallization
☐ B. Co-solvency
☐ C. Salt formation
☐ D. Hydrotropy

Question Type : **MCQ**
Question ID : **50886133544**
Status : **Not Answered**
Chosen Option : --

Q.18 Schedule T of Drugs and Cosmetics Rules, 1945 deals with:

- Ans ☒ A. GMP for ASU drugs
☐ B. GLP and requirement of premises and equipments
☐ C. GMP for Homeopathy medicine
☐ D. GMP for Pharmaceutical product

Question Type : **MCQ**
Question ID : **50886133758**
Status : **Not Answered**
Chosen Option : --

Q.19 The key intermediate for the biosynthesis of C6-C3 units is:

- Ans ☐ A. Pyruvic acid
☒ B. Shikimic acid
☐ C. Dehydroquinic acid
☐ D. Mevalonic acid

Question Type : **MCQ**
Question ID : **50886133763**
Status : **Not Answered**
Chosen Option : --

Q.20 Rancidity of oil is detected by:

- Ans ☐ A. Saponification value
☐ B. Iodine value
☒ C. Peroxide value
☐ D. Acid value

Question Type : **MCQ**
Question ID : **50886133675**
Status : **Not Answered**
Chosen Option : --

Q.21 Which one of the following enzymes comprises a major part of enzyme-linked receptors:

- Ans ☐ A. Receptor Histidine Kinase
☐ B. Receptor Threonine Phosphatase
☐ C. Receptor Serine Phosphatase
☒ D. Receptor Tyrosine Kinase

Question Type : **MCQ**
Question ID : **50886133588**
Status : **Not Answered**
Chosen Option : --

Q.22Core tablet coated with cellulose acetate phthalate has been administered to a patient.
Where do you expect the drug to be released:

- Ans ☒ A. Liver
☒ B. Intestine
☒ C. Oral cavity
☒ D. Stomach

Question Type : **MCQ**
Question ID : **50886133545**
Status : **Not Answered**
Chosen Option : --

Q.23Examples of BCS class III drugs are:

- Ans ☒ A. Acyclovir, Atenolol, Captopril
☒ B. Taxol, Ellagic acid, Aspirin
☒ C. Aspirin, Paracetamol, Amoxycillin
☒ D. Chloroquine, Diltiazem, Metoprolol

Question Type : **MCQ**
Question ID : **50886133589**
Status : **Not Answered**
Chosen Option : --

Q.24The bloom strength is directly proportional to:

- Ans ☒ A. Measure of the strength and stiffness of the gelatin
☒ B. Density
☒ C. Molecular weight
☒ D. Viscosity

Question Type : **MCQ**
Question ID : **50886133602**
Status : **Not Answered**
Chosen Option : --

Q.25Famotidine contains:

- Ans ☒ A. Thiazole ring
☒ B. Imidazole ring
☒ C. Pyrrole ring
☒ D. Furane ring

Question Type : **MCQ**
Question ID : **50886133495**
Status : **Not Answered**
Chosen Option : --

Section : **Section B**

Q.1 An elixir contains 47%v/v alcohol, what is the proof spirit according to USP:

- Ans ☒ A. 70%
☒ B. 82%
☒ C. 63%
☒ D. 91%

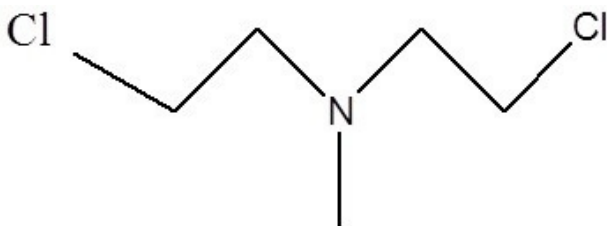
Question Type : MCQ
Question ID : 50886133691
Status : Not Answered
Chosen Option : --

Q.2 Alfa Alfa belongs to which of the following families:

- Ans ☒ A. Convolvulaceae
☒ B. Leguminosae
☒ C. Liliaceae
☒ D. Acanthaceae

Question Type : MCQ
Question ID : 50886133798
Status : Not Answered
Chosen Option : --

Q.3 Name the following drug molecule:



- Ans ☒ A. Mechlorethamine
☒ B. Chlorambucil
☒ C. Vincristine
☒ D. 6-Mercaptopurine

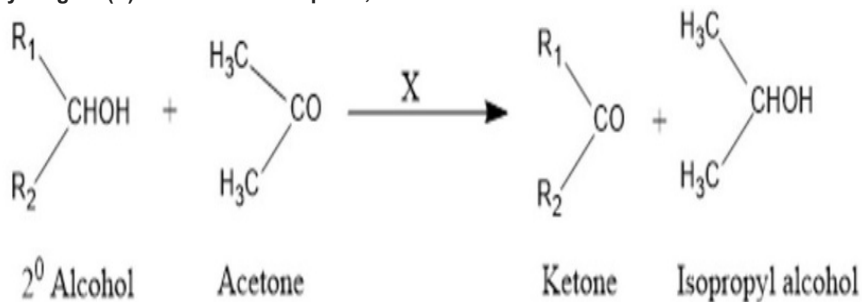
Question Type : MCQ
Question ID : 50886133686
Status : Not Answered
Chosen Option : --

Q.4 The biological name of Indian Bdellium is:

- Ans ☒ A. Commiphora mukul
☒ B. Commiphora berryi
☒ C. Commiphora wightii
☒ D. Commiphora molmol

Question Type : MCQ
Question ID : 50886133785
Status : Not Answered
Chosen Option : --

Q.5 According to Oppenauer Oxidation reaction, oxidation of secondary alcohol to ketone by reagent (X) in acetone takes place, what is "X" :



- Ans
- ☒ A. Aluminium Hydroxide
 - ☒ B. Amalgamated Zinc & Conc. HCl
 - ☒ C. Conc. H₂SO₄
 - ☒ D. Aluminium t-butoxide

Question Type : MCQ
 Question ID : 50886134246
 Status : Not Answered
 Chosen Option : --

Q.6 Which of the following climatic zones can be categorized into the hot & dry zone:

- Ans
- ☒ A. Zone-II
 - ☒ B. Zone-I
 - ☒ C. Zone-III
 - ☒ D. Zone-IV

Question Type : MCQ
 Question ID : 50886133698
 Status : Not Answered
 Chosen Option : --

Q.7 The IUPAC name of tartaric acid is:

- Ans
- ☒ A. 1,3-dihydroxybutane-1,4-dioic acid
 - ☒ B. 2,3-dihydroxybutane-1,4-dioic acid
 - ☒ C. 2,3-dihydroxy-4-butanoic acid
 - ☒ D. 2,2-dihydroxy-4-butanoic acid

Question Type : MCQ
 Question ID : 50886133456
 Status : Not Answered
 Chosen Option : --

Q.8 H1 receptor protein in humans is made up of:

- Ans
- ☒ A. 487 Aminoacids
 - ☒ B. 390 Aminoacids
 - ☒ C. 445 Aminoacids
 - ☒ D. 359 Aminoacids

Question Type : MCQ
 Question ID : 50886133712
 Status : Not Answered
 Chosen Option : --

Q.9Based on the rheological behavior of fluid, all of the following shows time independent property, except:

- Ans ☒ A. Plastic
☒ B. Anti-thixotropic
☒ C. Pseudoplastic
☒ D. Non-newtonian

Question Type : MCQ
Question ID : 50886133611
Status : Not Answered
Chosen Option : --

Q.10Etoposide and Teniposide are the semi-synthetic derivatives of:

- Ans ☒ A. Podophyllotoxin
☒ B. Digoxin
☒ C. Vincristine
☒ D. Taxol

Question Type : MCQ
Question ID : 50886133769
Status : Not Answered
Chosen Option : --

Q.11Which of the following is/are in-process QC test(s) for tablets:

- Ans ☒ A. Zeta-sizing Test
☒ B. Hardness, Friability, Average weight
☒ C. Drug content, Puncture Test
☒ D. Dissolution Test

Question Type : MCQ
Question ID : 50886133596
Status : Not Answered
Chosen Option : --

Q.12Which is the active form of Ganciclovir?

- Ans ☒ A. Phosphate
☒ B. Tetraphosphate
☒ C. Biphosphate
☒ D. Triphosphate

Question Type : MCQ
Question ID : 50886134114
Status : Not Answered
Chosen Option : --

Q.13Which of the following volatile oils are heavier than water:

- Ans ☒ A. Cumin
☒ B. Cinnamon
☒ C. Fennel
☒ D. Lemongrass

Question Type : MCQ
Question ID : 50886133794
Status : Not Answered
Chosen Option : --

Q.14 Which of the following mills is based on the mechanism of impact and attrition for size reduction:

- Ans ☒ A. Roller mill
☒ B. Fluid energy mill
☒ C. Hammer mill
☒ D. Colloid mill

Question Type : MCQ
Question ID : 50886133690
Status : Not Answered
Chosen Option : --

Q.15 Which of the following is Phase-II metabolism reaction:

- Ans ☒ A. Reduction
☒ B. Acetylation
☒ C. Hydrolysis
☒ D. Oxidation

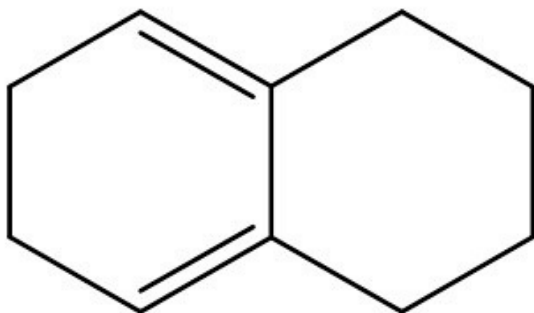
Question Type : MCQ
Question ID : 50886133522
Status : Not Answered
Chosen Option : --

Q.16 Antioxidant which is obtained from a desert plant and shows synergistic action with citric acid is:

- Ans ☒ A. Maleic acid
☒ B. BHA
☒ C. Tocopherols
☒ D. Nordihydroguaiaretic acid (NDGA)

Question Type : MCQ
Question ID : 50886133608
Status : Not Answered
Chosen Option : --

Q.17 Calculate the λ_{\max} of the following molecule:



- Ans ☒ A. 283 nm
☒ B. 273 nm
☒ C. 234 nm
☒ D. 244 nm

Question Type : MCQ
Question ID : 50886133680
Status : Not Answered
Chosen Option : --

Q.18 The most suitable test for digitoxose is:

- Ans ☒ A. Hager's test
☒ B. Dragendorff's test
☒ C. Baljet test
☒ D. Keller–Kiliani

Question Type : MCQ
Question ID : 50886134323
Status : Not Answered
Chosen Option : --

Q.19 Which of the following protective colloids has high gold number:

- Ans ☒ A. Acacia
☒ B. Tragacanth
☒ C. Albumin
☒ D. Gelatin

Question Type : MCQ
Question ID : 50886133615
Status : Not Answered
Chosen Option : --

Q.20 The equivalent weight of Potassium permanganate in acidic medium is:

- Ans ☒ A. 31.6
☒ B. 51.6
☒ C. 41.6
☒ D. 21.6

Question Type : MCQ
Question ID : 50886133668
Status : Not Answered
Chosen Option : --

Q.21 Match the following disease with their test for detection:

Disease	Diagnostic tests
P. Tuberculosis	(i) Lepromin test
Q. AIDS	(ii) ELISA
R. Syphilis	(iii) Mantoux test
S. Leprosy	(iv) Kahn's test

- Ans ☒ A. P(iv), Q(ii), R (iii), S(i)
☒ B. P(iii), Q(ii), R (iv), S(i)
☒ C. P(i), Q(ii), R (iii), S(iv)
☒ D. P(ii), Q(i), R (iii), S(iv)

Question Type : MCQ
Question ID : 50886133695
Status : Not Answered
Chosen Option : --

Q.22 Which of the following type of viscometer is used for the measurement of viscosity of a Newtonian fluid:

- Ans ☒ A. Cup and bob viscometer
☒ B. Brookfield's viscometer
☒ C. Pycnometer
☒ D. Ostwald viscometer

Question Type : **MCQ**
Question ID : **50886133689**
Status : **Not Answered**
Chosen Option : --

Q.23 The composition of "Lindlar catalyst" is:

- Ans ☒ A. Amalgamated Zinc and HCl
☒ B. NH_2NH_2 and KOH
☒ C. Palladium with calcium carbonate
☒ D. Palladium with Sodium carbonate

Question Type : **MCQ**
Question ID : **50886133490**
Status : **Not Answered**
Chosen Option : --

Q.245-Fluorouracil, an anti-metabolite used in cancer treatment, is activated to:

- Ans ☒ A. 5-fluoro-2-oxyuridylic acid
☒ B. 3-fluoro-3-deoxyuridylic acid
☒ C. 3-fluoro-3-oxyuridylic acid
☒ D. 5-fluoro-2-deoxyuridylic acid

Question Type : **MCQ**
Question ID : **50886133714**
Status : **Not Answered**
Chosen Option : --

Q.25 Which of the following drug is having a 1,3,4-thiadiazole ring system:

- Ans ☒ A. Dichlorophenamide
☒ B. Spironolactone
☒ C. Acetazolamide
☒ D. Furosemide

Question Type : **MCQ**
Question ID : **50886134110**
Status : **Not Answered**
Chosen Option : --

Section : **Section C**

Q.1 Leprosy is a :

- Ans ☒ A. Bacterial disease
☒ B. Viral disease
☒ C. Fungal disease
☒ D. Metazoal disease

Question Type : MCQ
Question ID : 50886133633
Status : Not Answered
Chosen Option : --

Q.2 The appendicular skeleton in an adult consists of:

- Ans ☒ A. 126 bones
☒ B. 206 bones
☒ C. 80 bones
☒ D. 120 bones

Question Type : MCQ
Question ID : 50886133647
Status : Not Answered
Chosen Option : --

Q.3 Histogram can be drawn only for:

- Ans ☒ A. Cumulative frequency distribution
☒ B. Discrete frequency distribution
☒ C. Continuous frequency distribution
☒ D. Relative frequency distribution

Question Type : MCQ
Question ID : 50886134572
Status : Not Answered
Chosen Option : --

Q.4 Murmurs are generally heard in disorders affecting the following:

- Ans ☒ A. SA nodes
☒ B. Pulmonary vein
☒ C. AV nodes
☒ D. Heart valves

Question Type : MCQ
Question ID : 50886133630
Status : Not Answered
Chosen Option : --

Q.5 Which of the following is first prodrug for sulfonamide:

- Ans ☒ A. Prontosil
☒ B. Sulfamidochrysodine
☒ C. Sulfatrim
☒ D. Trimethoprim

Question Type : MCQ
Question ID : 50886134125
Status : Not Answered
Chosen Option : --

Q.6 Which oral hypoglycemic agent increases the levels of incretin hormone by inhibiting the enzyme dipeptidyl peptidase-4 (DPP-4):

- Ans
- ☒ A. Metformin
 - ☒ B. Pioglitazone
 - ☒ C. Sitagliptin
 - ☒ D. Glipizide

Question Type : MCQ
Question ID : 50886134236
Status : Not Answered
Chosen Option : --

Q.7 Biological activity of synthetic adrenaline is almost:

- Ans
- ☒ A. 25% of S-adrenaline
 - ☒ B. 25% of R-adrenaline
 - ☒ C. 50% of S-adrenaline
 - ☒ D. 50% of Natural R-adrenaline

Question Type : MCQ
Question ID : 50886133716
Status : Not Answered
Chosen Option : --

Q.8 Central Government approved factory premises where Opium alkaloids are processed is situated at:

- Ans
- ☒ A. Ghazipur and Kota
 - ☒ B. New Delhi And Ghaziabad
 - ☒ C. Gwalior and Kota
 - ☒ D. Neemuch and Ghazipur

Question Type : MCQ
Question ID : 50886134317
Status : Not Answered
Chosen Option : --

Q.9 Tetracycline undergoes epimerization at C4 between pH 4-8 to give:

- Ans
- ☒ A. Isotetracycline
 - ☒ B. Doxycycline
 - ☒ C. Epitetracycline
 - ☒ D. Nortetracycline

Question Type : MCQ
Question ID : 50886134131
Status : Not Answered
Chosen Option : --

Q.10 The etiology of jaundice could be haemolytic anaemia if:

- Ans
- ☒ A. Unconjugated bilirubin is found equal to conjugated bilirubin
 - ☒ B. Increase in IgE level
 - ☒ C. Conjugated bilirubin is found more than unconjugated bilirubin
 - ☒ D. Unconjugated bilirubin is found more than conjugated bilirubin

Question Type : MCQ
Question ID : 50886133664
Status : Not Answered
Chosen Option : --

Q.11 Precursor for corticosteroids synthesis is:

- Ans ☒ A. Phenanthrene
☒ B. 1,2-Cyclopentophenanthrene
☒ C. 1,2-Cyclopentodihydrophenanthrene
☒ D. Cholesterol

Question Type : MCQ
Question ID : 50886134119
Status : Not Answered
Chosen Option : --

Q.12 Which one of the following diseases is caused by the deficiency of niacin:

- Ans ☒ A. Anemia
☒ B. Night Blindness
☒ C. Pellagra
☒ D. Scurvy

Question Type : MCQ
Question ID : 50886134575
Status : Not Answered
Chosen Option : --

Q.13 Enzyme commonly targeted by drugs to treat hypertension is:

- Ans ☒ A. Cyclooxygenase (COX)
☒ B. HMG-CoA reductase
☒ C. Angiotensin-converting enzyme (ACE)
☒ D. Monoamine oxidase (MAO)

Question Type : MCQ
Question ID : 50886134137
Status : Not Answered
Chosen Option : --

Q.14 How many optical isomers are possible for lactic acid:

- Ans ☒ A. 4
☒ B. 0
☒ C. 6
☒ D. 2

Question Type : MCQ
Question ID : 50886134243
Status : Not Answered
Chosen Option : --

Q.15 If one event is unaffected by the outcome of another event, the two events are said to be:

- Ans ☒ A. Mutually exclusive
☒ B. Dependent
☒ C. Either dependent or independent
☒ D. Independent

Question Type : MCQ
Question ID : 50886133947
Status : Not Answered
Chosen Option : --

Q.16 Which functional group in drug molecules is most likely to undergo phase I metabolic oxidation by cytochrome P450 enzymes:

- Ans ☒ A. Ester group
☒ B. Amide group
☒ C. Hydroxyl group
☒ D. Methyl group

Question Type : **MCQ**
Question ID : **50886134140**
Status : **Not Answered**
Chosen Option : --

Q.17 Which ring of warfarin is essential for its therapeutic activity:

- Ans ☒ A. Purine
☒ B. Pyrimidine
☒ C. Lactone
☒ D. Coumarin

Question Type : **MCQ**
Question ID : **50886134122**
Status : **Not Answered**
Chosen Option : --

Q.18 Following are the examples of negative feedback system except:

- Ans ☒ A. Body temperature regulation
☒ B. Blood glucose maintenance
☒ C. Blood clotting
☒ D. Blood pressure maintenance

Question Type : **MCQ**
Question ID : **50886133644**
Status : **Not Answered**
Chosen Option : --

Q.19 Which of the following is called as cell-mediated (delayed) hypersensitivity:

- Ans ☒ A. Type II hypersensitivity
☒ B. Type I hypersensitivity
☒ C. Type III hypersensitivity
☒ D. Type IV hypersensitivity

Question Type : **MCQ**
Question ID : **50886134208**
Status : **Not Answered**
Chosen Option : --

Q.20 Which ionization technique in mass spectrometry is most suitable for large biomolecules like proteins:

- Ans ☒ A. Chemical Ionization (CI)
☒ B. Physical Ionization (PI)
☒ C. Electron Impact (EI)
☒ D. Electrospray Ionization (ESI)

Question Type : **MCQ**
Question ID : **50886134135**
Status : **Not Answered**
Chosen Option : --

Q.21 Which of the following hormone is not secreted by human placenta:

- Ans ☒ A. Estrogen
☒ B. hCG
☒ C. LH
☒ D. Progesterone

Question Type : MCQ
Question ID : 50886133642
Status : Not Answered
Chosen Option : --

Q.22 Which of the following is an aryl acetic acid derivative:

- Ans ☒ A. Salsalate
☒ B. Ibuprofen
☒ C. Aspirin
☒ D. Mefenamic acid

Question Type : MCQ
Question ID : 50886134141
Status : Not Answered
Chosen Option : --

Q.23 Melatonin is secreted by:

- Ans ☒ A. Thyrotrophs
☒ B. Gonadotrophs
☒ C. Pineal gland
☒ D. Adrenal gland

Question Type : MCQ
Question ID : 50886133654
Status : Not Answered
Chosen Option : --

Q.24 Which hormone stimulates red blood cell production:

- Ans ☒ A. Vasopressin
☒ B. Erythropoietin
☒ C. Erythrocytin
☒ D. Prolactin

Question Type : MCQ
Question ID : 50886134156
Status : Not Answered
Chosen Option : --

Q.25 Which of the following drug does NOT require therapeutic drug monitoring:

- Ans ☒ A. Digitoxin
☒ B. Phenytoin
☒ C. Gentamicin
☒ D. Acetaminophen

Question Type : MCQ
Question ID : 50886133841
Status : Not Answered
Chosen Option : --

Q.1 The short acting anticholinesterase drug is:

- Ans ☒ A. Physostigmine
☒ B. Edrophonium
☒ C. Ecothiophate
☒ D. Neostigmine

Question Type : **MCQ**
Question ID : **50886134192**
Status : **Not Answered**
Chosen Option : --

Q.2 Which among the following is an example of high shear mixer:

- Ans ☒ A. Turbine mixer
☒ B. Jet mixer
☒ C. Sigma blade mixer
☒ D. Nauta mixer

Question Type : **MCQ**
Question ID : **50886133598**
Status : **Not Answered**
Chosen Option : --

Q.3 In a homologous series of any general anesthetic, increasing the chain length increases the lipid solubility, and produce a corresponding increase in anesthetic potency, is proposed by:

- Ans ☒ A. John Pemberton
☒ B. Meyer - Overton
☒ C. Hubert Humphrey
☒ D. Meyer - Philip

Question Type : **MCQ**
Question ID : **50886134266**
Status : **Not Answered**
Chosen Option : --

Q.4 Influenza viruses are RNA viruses and belong to which family:

- Ans ☒ A. Orthomyxoviridae
☒ B. Papoviridae
☒ C. Retroviridae
☒ D. Parvoviridae

Question Type : **MCQ**
Question ID : **50886134582**
Status : **Not Answered**
Chosen Option : --

Q.5 Two drugs producing the same clinical effects and safety profile when administered to patients are considered:

- Ans ☒ A. Minimum Toxic Concentration (MTC)
☒ B. Minimum Effective Concentration (MEC)
☒ C. Therapeutic equivalent
☒ D. Therapeutic window

Question Type : MCQ
Question ID : 50886133824
Status : Not Answered
Chosen Option : --

Q.6 Aerobic dehydrogenase in biological oxidation contains:

- Ans ☒ A. NAD
☒ B. NADH
☒ C. NADP
☒ D. FMN & FAD

Question Type : MCQ
Question ID : 50886133464
Status : Not Answered
Chosen Option : --

Q.7 Match the following antibodies with their correct description:

Antibody	Description
P. IgE	(i) Cross the placenta
Q. IgG	(ii) Dominant antibody produced in immune responses
R. IgM	(iii) It is found in the mother's milk
S. IgA	(iv) Responsible for autoimmune responses including allergies

- Ans ☒ A. P(i), Q(iii), R(ii), S(iv)
☒ B. P(i), Q(ii), R(iii), S(iv)
☒ C. P(iv), Q(ii), R(iii), S(i)
☒ D. P(iv), Q(i), R(ii), S(iii)

Question Type : MCQ
Question ID : 50886133697
Status : Not Answered
Chosen Option : --

Q.8 Plasma protein bound drugs are:

- Ans ☒ A. Pharmacodynamically active
☒ B. Pharmacokinetically inert
☒ C. Pharmacokinetically and Pharmacodynamically inert
☒ D. Pharmacodynamically inert

Question Type : MCQ
Question ID : 50886133587
Status : Not Answered
Chosen Option : --

Q.9 Which of the following equipment measures weight variation using reflected energy:

- Ans ☒ A. Rotofill
☒ B. Vericap-1200
☒ C. Rotosort
☒ D. Rotoweight

Question Type : MCQ
Question ID : 50886133621
Status : Not Answered
Chosen Option : --

Q.10 Which among the following is not the process of drug degradation:

- Ans ☒ A. Photolysis
☒ B. Decarboxylation
☒ C. Hemolysis
☒ D. Hydrolysis

Question Type : MCQ
Question ID : 50886133702
Status : Not Answered
Chosen Option : --

Q.11 The term of a patent granted under Indian Patent's Act is:

- Ans ☒ A. 20 Years
☒ B. 10 Years
☒ C. 30 Years
☒ D. 40 Years

Question Type : MCQ
Question ID : 50886133838
Status : Not Answered
Chosen Option : --

Q.12 Choose the incorrect statement regarding Cathode rays:

- Ans ☒ A. Cathode rays produce X-rays
☒ B. Cathode rays are electromagnetic waves
☒ C. Cathode rays travel in straight route
☒ D. Cathode rays are fast electrons

Question Type : MCQ
Question ID : 50886133619
Status : Not Answered
Chosen Option : --

Q.13 Among the following which is known as "SPIRIT OF SALT":

- Ans ☒ A. Nitric acid
☒ B. Boric acid
☒ C. Hydrochloric acid
☒ D. Thioglycolic acid

Question Type : MCQ
Question ID : 50886134254
Status : Not Answered
Chosen Option : --

Q.14 Partial hydrogenation of vegetable oils in the presence of Ni catalyst at 200°C gives:

- Ans ☐ A. Butter
☐ B. Vanaspati ghee
☐ C. Cheese
☒ D. Margarine

Question Type : MCQ
Question ID : 50886134269
Status : Not Answered
Chosen Option : --

Q.15 As per Bronsted-Lowry concept, acid is defined as:

- Ans ☐ A. Electron pair acceptor
☐ B. Any substance/molecule that can accept a proton
☒ C. Any substance/molecule that can donate a proton
☐ D. Electron pair donor

Question Type : MCQ
Question ID : 50886134258
Status : Not Answered
Chosen Option : --

Q.16 Which of the following is a correct expression of average particle size with value of $p=1$ i.e index related to the size of an individual particle and frequency index ($f=2$):

$d_{ln} = \frac{\sum nd^2}{\sum nd^3}$	$d_{ln} = \frac{\sum nd^3}{\sum nd^2}$	$d_{sl} = \frac{\sum nd^2}{\sum nd^3}$	$d_{sl} = \frac{\sum nd^3}{\sum nd^2}$
A	B	C	D

- Ans ☐ A. B
☒ B. C
☐ C. D
☐ D. A

Question Type : MCQ
Question ID : 50886133687
Status : Not Answered
Chosen Option : --

Q.17 Which of the following is peroxisome proliferator-activated receptor-alpha (PPAR- α) agonist:

- Ans ☐ A. Ezetimibe
☐ B. Niacin
☐ C. Colesevelam
☒ D. Gemfibrozil

Question Type : MCQ
Question ID : 50886134197
Status : Not Answered
Chosen Option : --

Q.18 This given equation represents which law:

$$E = K_k \ln \frac{d_1}{d_2}$$

- Ans
- ☐ A. Ritinger's law
 - ☐ B. Bond's law
 - ☐ C. Fick's law
 - ☒ D. Kick's law

Question Type : **MCQ**
Question ID : **50886133699**
Status : **Not Answered**
Chosen Option : --

Q.19 In which limit test, Thioglycolic acid is used:

- Ans
- ☐ A. Limit test for arsenic
 - ☐ B. Limit test for sulphate
 - ☒ C. Limit test for iron
 - ☐ D. Limit test for chloride

Question Type : **MCQ**
Question ID : **50886134257**
Status : **Not Answered**
Chosen Option : --

Q.20 Who has the power to fix the ceiling price of scheduled formulations:

- Ans
- ☐ A. Director General Health Services
 - ☐ B. Pharmacy Council of India
 - ☐ C. National Medical Commission
 - ☒ D. National Pharmaceutical Pricing Authority

Question Type : **MCQ**
Question ID : **50886133971**
Status : **Not Answered**
Chosen Option : --

Q.21 Which of the following is not a GABA derivative:

- Ans
- ☐ A. Pregabalin
 - ☐ B. Vigabatrin
 - ☐ C. Gabapentin
 - ☒ D. Rufinamide

Question Type : **MCQ**
Question ID : **50886134196**
Status : **Not Answered**
Chosen Option : --

Q.22A hypothesis stipulating that there is no difference between the situations, groups and outcomes is called:

- Ans ☒ A. Hypothesis of association
☒ B. Null hypothesis
☒ C. Hypothesis of differences
☒ D. Alternative hypothesis

Question Type : MCQ
Question ID : 50886133849
Status : Not Answered
Chosen Option : --

Q.23How many Pharmacists are required for a hospital having up to 300 beds:

- Ans ☒ A. 8
☒ B. 10
☒ C. 15
☒ D. 5

Question Type : MCQ
Question ID : 50886134565
Status : Not Answered
Chosen Option : --

Q.24Which of the following is easily nitrated using a mixture of HNO_3 and H_2SO_4 :

- Ans ☒ A. Toluene
☒ B. Fluorobenzene
☒ C. Chlorobenzene
☒ D. Nitrobenzene

Question Type : MCQ
Question ID : 50886134467
Status : Not Answered
Chosen Option : --

Q.25If the spin of the electrons in the excited state are parallel, it is called as:

- Ans ☒ A. Doublet state
☒ B. Triplet state
☒ C. Singlet state
☒ D. Parallel state

Question Type : MCQ
Question ID : 50886134271
Status : Not Answered
Chosen Option : --

Q.1 The amount of air that moves in or out of the lungs with each respiratory cycle is:

- Ans ☒ A. Inspiratory reserve volume
☒ B. Expiratory reserve volume
☒ C. Tidal volume
☒ D. Residual volume

Question Type : MCQ
Question ID : 50886133657
Status : Not Answered
Chosen Option : --

Q.2 Virus mediated transfer of host DNA from one cell to another cell is known as:

- Ans ☒ A. Transduction
☒ B. Integration
☒ C. Transformation
☒ D. Transcription

Question Type : MCQ
Question ID : 50886133720
Status : Not Answered
Chosen Option : --

Q.3 What should be the log P value for an ideal drug candidate for transdermal permeation:

- Ans ☒ A. Below 1
☒ B. 1-3
☒ C. 5-7
☒ D. Above 7

Question Type : MCQ
Question ID : 50886134029
Status : Not Answered
Chosen Option : --

Q.4 Which of the following formula for calculating child dose is based on body weight:

- Ans ☒ A. Clark's formula
☒ B. Fried's formula
☒ C. Young's formula
☒ D. Dilling's formula

Question Type : MCQ
Question ID : 50886133708
Status : Not Answered
Chosen Option : --

Q.5 Salivary amylase helps in digestion of which of the following nutrients:

- Ans ☒ A. Fats
☒ B. Vitamins
☒ C. Starch
☒ D. Proteins

Question Type : MCQ
Question ID : 50886134176
Status : Not Answered
Chosen Option : --

Q.6In drying process, which of the following parameters is same as the adiabatic saturation temperature:

- Ans ☒ A. Absolute humidity
☒ B. Dew point
☒ C. Relative humidity
☒ D. Wet bulb temperature

Question Type : **MCQ**
Question ID : **50886134035**
Status : **Not Answered**
Chosen Option : --

Q.7What is the proposed mechanism of action of artemisinin in the treatment of malaria:

- Ans ☒ A. Inhibition of dihydrofolate reductase, interfering with folate synthesis
☒ B. Blocking of the Plasmodium falciparum ATPase, disrupting ion homeostasis
☒ C. Generation of reactive oxygen species (ROS) by cleavage of the endoperoxide bridge, leading to parasite death
☒ D. Inhibition of the heme polymerase enzyme, causing accumulation of toxic heme

Question Type : **MCQ**
Question ID : **50886134223**
Status : **Not Answered**
Chosen Option : --

Q.8The optimum temperature for rapid growth of mesophiles is:

- Ans ☒ A. 40 to 50 °C
☒ B. 50 to 60 °C
☒ C. 15 to 20 °C
☒ D. 25 to 40 °C

Question Type : **MCQ**
Question ID : **50886134027**
Status : **Not Answered**
Chosen Option : --

Q.9 The fluoroquinolones act by:

- Ans ☒ A. Inhibiting folic acid synthesis, reducing nucleotide production and DNA synthesis
☒ B. Inhibiting DNA gyrase and topoisomerase IV, causing supercoiling and fragmentation of bacterial DNA
☒ C. Disrupting peptidoglycan cross-linking, weakening the bacterial cell wall
☒ D. Inhibiting ribosomal subunits, leading to the cessation of protein synthesis

Question Type : **MCQ**
Question ID : **50886134221**
Status : **Not Answered**
Chosen Option : --

Q.10The cranial nerve that regulates the heartbeat is:

- Ans ☒ A. IX
☒ B. VII
☒ C. X
☒ D. VIII

Question Type : **MCQ**
Question ID : **50886133640**
Status : **Not Answered**
Chosen Option : --

Q.11Which of the following is a causative organism for Syphilis:

- Ans ☒ A. *Vibrio cholerae*
☒ B. *Treponema pallidum*
☒ C. *Bacillus pertussis*
☒ D. *Clostridium tetani*

Question Type : **MCQ**
Question ID : **50886133723**
Status : **Not Answered**
Chosen Option : --

Q.12Coomb's test is used for detection of:

- Ans ☒ A. Yellow fever
☒ B. Syphilis
☒ C. Typhoid
☒ D. Antiglobulin

Question Type : **MCQ**
Question ID : **50886133721**
Status : **Not Answered**
Chosen Option : --

Q.13In Michaelis-Menten equation when $K_m = C$:

- Ans ☒ A. The rate of process is equal to half of maximum rate
☒ B. Indicates zero-order process
☒ C. The rate process occurs at a constant rate
☒ D. Equation becomes identical to first order elimination of drug

Question Type : **MCQ**
Question ID : **50886133529**
Status : **Not Answered**
Chosen Option : --

Q.14Which of the following is NOT a Class 1C anti-arrhythmic drug:

- Ans ☒ A. Propafenone
☒ B. Mexiletine
☒ C. Flecainide
☒ D. Moricizine

Question Type : **MCQ**
Question ID : **50886134189**
Status : **Not Answered**
Chosen Option : --

Q.15 Which of the following is an example of physical incompatibility:

- Ans ☒ A. Alkaloidal incompatibility
☒ B. Liquefaction
☒ C. Drug interaction
☒ D. Error in dosage form

Question Type : MCQ
Question ID : 50886133705
Status : Not Answered
Chosen Option : --

Q.16 Which of the following is a Partial Fatty acid oxidation (pFox) inhibitor:

- Ans ☒ A. Trimetazidine
☒ B. Atosiban
☒ C. Verapamil
☒ D. Nicardipine

Question Type : MCQ
Question ID : 50886134186
Status : Not Answered
Chosen Option : --

Q.17 Renin is released from:

- Ans ☒ A. Hepatocytes of liver
☒ B. Beta-cells of pancreas
☒ C. Microglial cells
☒ D. Juxtaglomerular cells (JGCs) of kidney

Question Type : MCQ
Question ID : 50886133652
Status : Not Answered
Chosen Option : --

Q.18 Which of the following cranial nerve is instrumental in motor function:

- Ans ☒ A. Vestibulocochlear
☒ B. Olfactory
☒ C. Accessory
☒ D. Optic

Question Type : MCQ
Question ID : 50886134157
Status : Not Answered
Chosen Option : --

Q.19 The most common neoplasm in patients with AIDS is:

- Ans ☒ A. Carcinoma of breast
☒ B. Acute myeloid leukaemia
☒ C. Adenocarcinoma
☒ D. Kaposi sarcoma

Question Type : MCQ
Question ID : 50886134148
Status : Not Answered
Chosen Option : --

Q.20The Phase in which two identical copies of DNA are formed is:

- Ans ☒ A. M phase
☒ B. G2 phase
☒ C. G1 phase
☒ D. S phase

Question Type : **MCQ**
Question ID : **50886134154**
Status : **Not Answered**
Chosen Option : --

Q.21Progressive loss of bone that occurs in osteoporosis is an example of:

- Ans ☒ A. Atrophy
☒ B. Hyperplasia
☒ C. Hypertrophy
☒ D. Metaplasia

Question Type : **MCQ**
Question ID : **50886133661**
Status : **Not Answered**
Chosen Option : --

Q.22The visible coloured ring of the eye is called:

- Ans ☒ A. Lens
☒ B. Retina
☒ C. Cornea
☒ D. Iris

Question Type : **MCQ**
Question ID : **50886134166**
Status : **Not Answered**
Chosen Option : --

Q.23Sarcoma is the cancer of:

- Ans ☒ A. Plasma cells
☒ B. Glands
☒ C. Connective tissues
☒ D. Epithelium

Question Type : **MCQ**
Question ID : **50886134184**
Status : **Not Answered**
Chosen Option : --

Q.24Outer Covering of the testes is:

- Ans ☒ A. Tunica albuginea
☒ B. Tunica vaginalis
☒ C. Tunica media
☒ D. Tunica vasculosa

Question Type : **MCQ**
Question ID : **50886134164**
Status : **Not Answered**
Chosen Option : --

Q.25 Which of the following is the best technique for detecting HIV:

- Ans**
- ☒ A. Widal test
 - ☒ B. Real-time PCR
 - ☒ C. Polymerase chain reaction
 - ☒ D. Reverse transcriptase-PCR

Question Type : **MCQ**

Question ID : **50886133719**

Status : **Not Answered**

Chosen Option : --