

Placement and Internship Report

Academic Year 2023 – 2024



Placement Office
Indian Institute of Technology, Bombay

Index

Particulars	Page No.
Introduction	3
Highlights in Brief	3
Student Preparation	4
Recruiter's Profile and Overall Statistics	4
Program-wise statistics	6
Companies recruiting students over the years	7
Department and Centre - wise classification of offers	8
Sector-wise statistics for different programs	9
Salary-wise statistics	10
PPOs and Internship data at a glance	11
PhD Placement Details	11
Average Salary, International and Pre-Placement Offer Details	11
Year-wise comparison of placement	12
Sector-wise statistics	13
Internship 2023 – 24	14
Department-wise internship offers	15
Conclusion	17

Introduction

The Placement activities at IIT Bombay were conducted throughout the year, which started in the month of July 2023 and completed on July 7th, 2024. The placement season at IIT Bombay followed a Hybrid model with Campus placements as usual in December 2023 and an interview process throughout the year for PhD students, with many in-person campus interviews during the summer. We have had the second highest number of students ever, 1475 placed this year as of 30th June. We had over 1350 unique Job Announcement Forms profiles offered. This year the number of companies registered was 543, of these 388 participated in the placements and 364 companies made offers. This year, we saw a twelve percent (12%) increase in companies recruited from IIT Bombay. Seventy-eight international offers were accepted in both Phases of the IIT Bombay Placements for A.Y. 2023 - 24, while 22 offers of above INR 1 crore per year were accepted during this drive.

Table 1: Highlights in Brief

Key Metric	Details
Total Number of Registered Students	2414
Total Number of Actively Participated Students	1979
Total Number of Accepted Offers	1475
Total Number of Companies Offered Jobs	364
Total Number of Job Offers	1650
Job Offers above INR 1 crore accepted	22
Pre – Placement Offers accepted	258
International Job Offers accepted	78
Average annual CTC Salary Package of students	INR 23.50 LPA
Median Salary	INR 17.92 LPA
Top Recruiting Sector	Engineering & Technology

IIT Bombay Placements for the Academic year 2023 - 2024 saw participation from multiple sectors such as Core Engineering, Information Technology, Software programming, Research and Development, Consulting, Finance, Banking, High-end Technology, and Technical Services. The job opportunities offered by the recruiting firms provide real-world experience, extensive learning, traveling, and experiencing diverse work cultures.

Student Preparation

The key focus of the placement office is to prepare students for their placement and internships. Keeping the students well prepared for what they are likely to face in the corporate world is the responsibility of every academic institute, and the team here at IIT Bombay takes every necessary step to train and guide the students. Students are exposed to challenging and research-based academics and a host of sports along with cultural and organizational activities on this vibrant campus. The first event conducted in this direction was “Assessments”, in collaboration with industry experts, for profiles of coding, consultancy, finance, analytics etc.

In addition, preparatory programs were arranged to enhance communication skills, group dynamics, and interview skills. Overall, these programs provided insight into the job domains and prepared the job aspirants to face the challenges of the future. The students were connected with mentors for guidance and a series of aptitude and technical tests were conducted to improve their problem-solving skills. The preparatory activities sourced information from various alumni, where the alumni background was mapped according to student preference. Various department-level activities were conducted to cater to individual domain requirements. All assessment-related activities were conducted successfully.

Recruiter’s Profile and Overall Statistics:

This year we have received 78 international offers from different firms based in Japan, Taiwan, Europe, UAE, Singapore, USA, Netherlands, and Hong Kong, which has increased from 65 in the previous year. Due to the war in Ukraine and the subdued global economy, we saw fewer international recruiters. The overall average package offered during IIT Bombay placements 2023 - 2024 stood at INR 23.5 LPA.

The Engineering and Technology sector recruited the highest numbers of students. In various engineering domains, 430 students were selected in 106 core engineering companies at entry-level positions. Information Technology and Tech hiring have slightly more this season compared to last year. Around 307 students have been offered

IT/Software jobs by over 84 companies through campus placement, making the IT sector the second biggest recruiter after the engineering sector. Compared to last year fewer selections, i.e. 117 consulting offers were made by 29 consulting companies. Trading, Banking, and Fintech companies were prominent recruiters. The finance sector has 113 offers from 33 financial service firms this year. Profiles in Artificial Intelligence, Machine Learning, Product Management, Mobility, 5G, Data Science and Analytics, and Education also saw brisk hiring trends. Seventeen Design companies have offered 33 jobs and have seen fewer selections. The education sector saw eleven companies participating with only 30 jobs offered. The Research & Development witnessed companies in Automation, Energy Science, Battery Technology, Chemical and Mechanical Research, Energy Efficiency Solutions, Application Development, Materials Research, Semiconductor, Power Electronics, AI/ML and Research Laboratories, where 36 organisations offered 97 positions in 2023 – 24. This year, the Indian Institute of Technology Bombay placement percentage may vary based on the student’s decision. Some of the 435 deregistered students want to pursue higher studies, such as M.S./M.Tech./PhD and MBA courses, while others opted for entrepreneurship or civil services, and didn’t appear or had minimal participation in the placement drive.

Table 2: Overall placement statistics outside India/MNCs/Indian companies

Placement Outside India	78
Placements in MNCs in India	775
Placements in Indian Companies	622
Total	1475

Table 3: Program-wise placement data 2023 – 2024 including PPOs

Program	Registered	Participated	Placed	Placement Percentage
B.Tech.	930	819	683	83.39
M. Tech.	564	497	415	83.5
M.S. (Research)	23	15	14	93.33
Dual Degree (B.Tech. + M.Tech.)	216	192	152	79.16
M.Sc. (2 years)	228	158	87	55.06
Bachelors in Science (4 years)	69	60	39	65.0
B. Des	26	17	9	52.94
Dual Degree (B.Des. + M. Des.)	10	10	4	40
M. Des	69	63	36	57.14
M.S. (Research) (Exit Degree)	10	7	1	14.28
M.P.P.	11	6	0	0
Others*	28	18	3	22.22
Ph.D.	230	117	32	27.35
Total	2414	1979	1475	74.53

Note : *Includes other programs such as 5 yr. Dual Degree (B.S. + M.S.), Dual Degree (B.S. + M.Tech.) Dual Degree (M.Tech. + Ph.D.), M.Sc. + Ph.D., MUDE, M.Sc. + Ph.D.

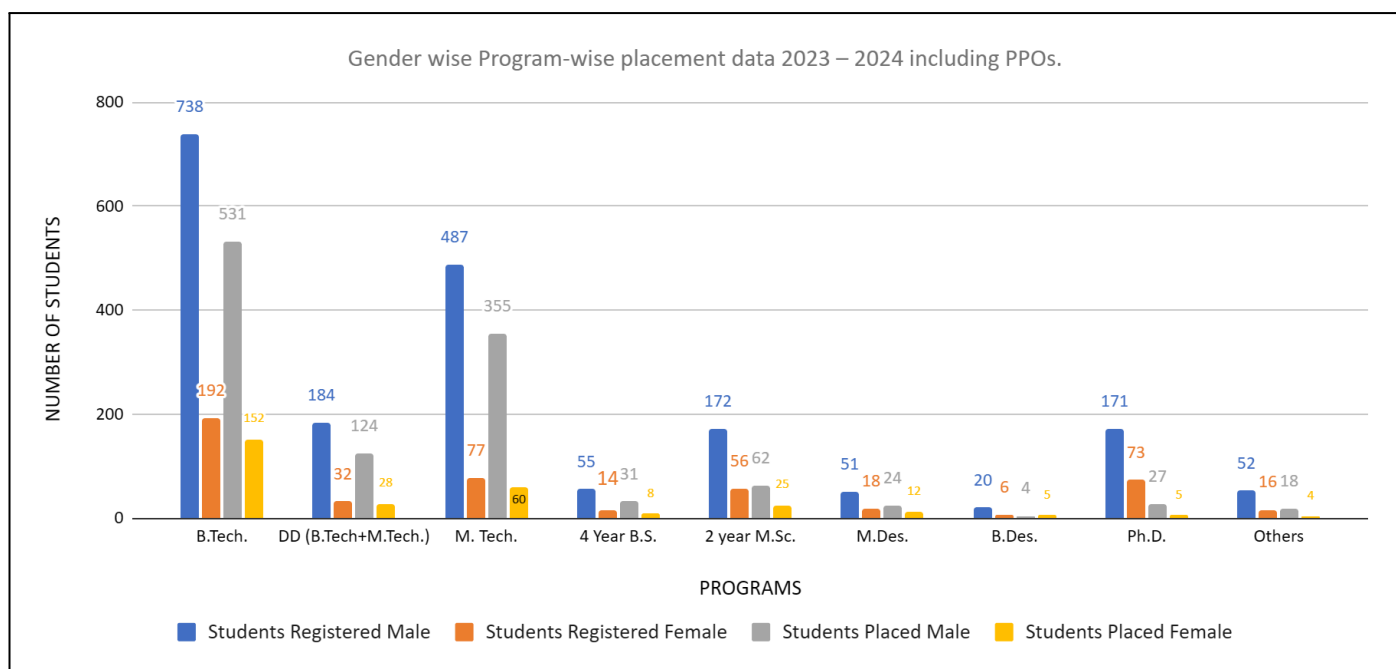


Table 4: Number of Companies recruiting students through Campus Placements in the Last 7 years

Academic Year	Number of companies recruiting Campus Placements
2016- 2017	294
2017- 2018	322
2019 - 2020	313
2020 - 2021	292
2021 - 2022	332
2022 - 2023	324
2023 - 2024	364

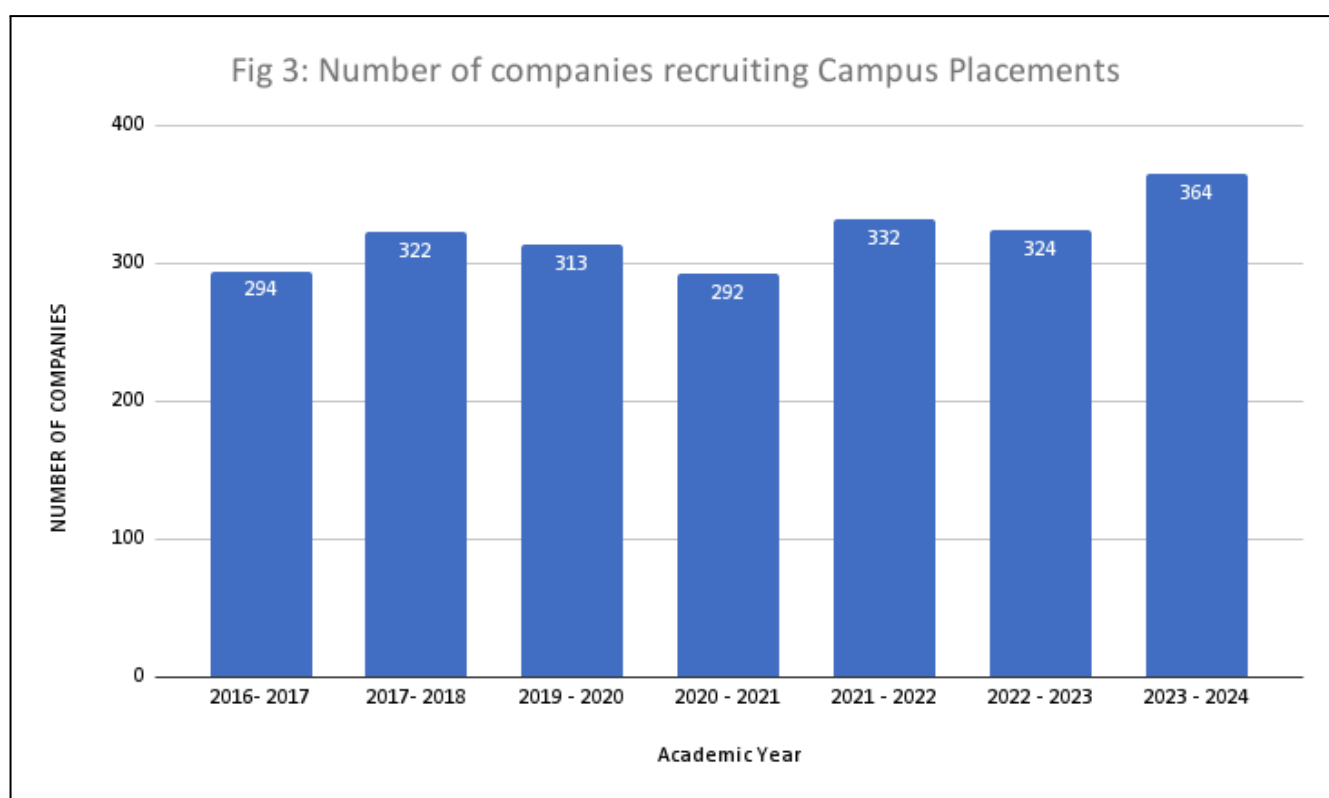


Table 5: Department and Centre - wise classification of offers (2023 – 24)

Department / Centers / Program	Registered	Participated	Placed
Aerospace Engineering	140	119	76
Applied Statistics and Informatics	34	30	24
Earth Science	61	34	14
Biomedical Engineering	21	15	12
Biosciences and Bioengineering	34	21	11
Centre for Policy Studies	11	6	0
Centre for Research in Nanotechnology & Science	8	4	2
Centre of Studies in Resources Engineering (CSRE)	2	2	2
Technology and Development (C-TARA)	37	30	25
Centre for Urban Science and Engineering	10	9	5
Chemical Engineering	190	160	119
Chemistry	80	59	22
Civil Engineering	177	146	113
Computer Science Engineering	275	254	230
Economics	32	30	21
Educational Technology	5	3	2
Electrical Engineering	319	281	232
Engineering Physics	61	41	28
Energy Science and Engineering	81	59	39
Environmental Science and Engineering	50	42	34
Geo-informatics and Natural Resources Engineering	26	23	17
Humanities and Social Sciences	9	5	0
Industrial Design Centre (IDC)	105	90	49
Industrial Engineering and Operations Research	38	36	29
Mathematics	49	37	20
Mechanical Engineering	308	260	229
Metallurgical Engineering and Materials Science	185	152	106
Physics	48	22	7
Systems and Control Engineering	18	9	7
Total	2414	1979	1475

Table 6: Distribution of offers in different sectors of economy including PPOs

Sector	Number of Selections	Number of companies
Engineering & Technology	430	106
IT / Software	307	84
Consulting	117	29
Finance	113	33
Research & Development	97	36
Education	30	11
Public Sector Undertaking	6	2
Product Management	20	8
Data Analytics	78	22
Design	33	17
Data Science	48	16
Software Development	16	7
AI/ML	15	8
Other	165	59
Total	1475	(few firms offered in multiple sectors)

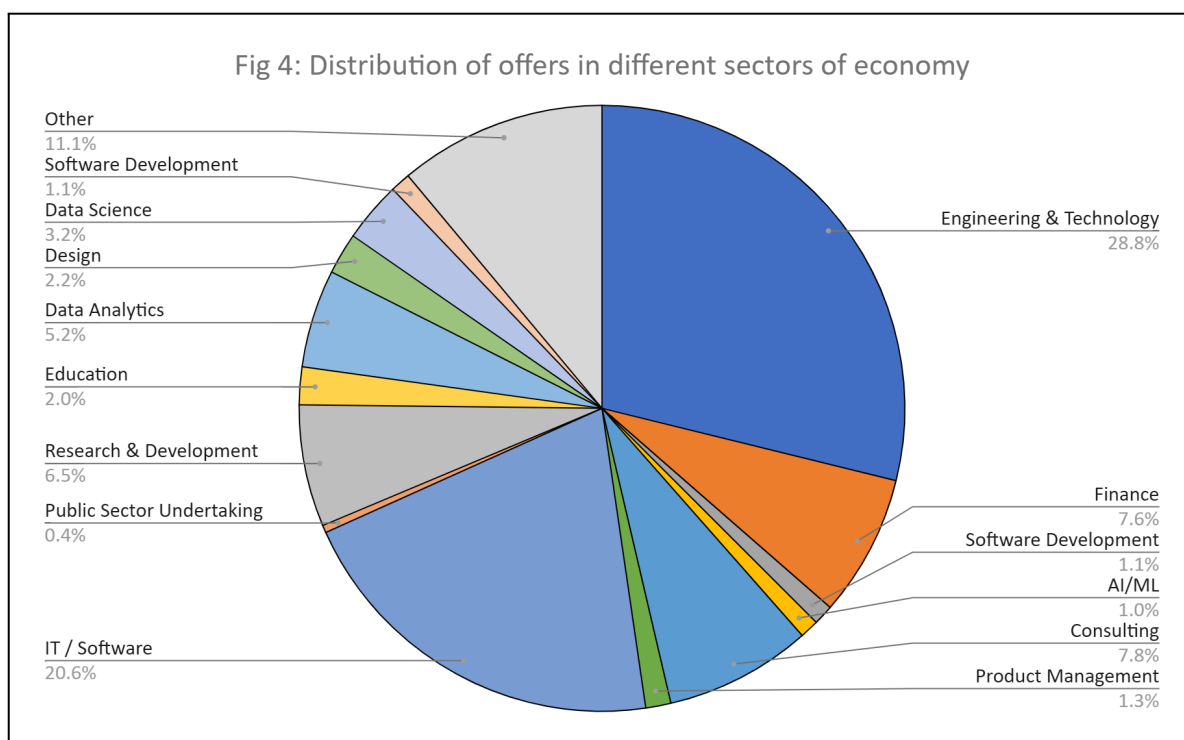


Table 7: Placement details based on Salary compensation

Range of gross salary (in INR) (Lakhs per annum)	Number of Offers	Number of Companies
Above 20	558	123
Between 16.75 to 20	230	70
Between 14 to 16.75	227	60
Between 12 to 14	93	29
Between 10 to 12	161	46
Between 8 to 10	128	43
Between 6 to 8	68	25
Between 4 to 6	10	7
Total	1475	--



Table 8: PPOs and Internship data at a glance

Particulars	Statistics (2024)
Number of Pre-placements offers received (PPOs)	300
Pre-placement offers (PPOs) accepted	258
Total number of internship offers	1267
Type of internship offers	1,177 offers made by companies and 90 offers made by universities

PhD Placement Details

- Total number of registered students: 230
- Number of active participants: 118
- Total number of accepted offers: 32
- Average CTC from allocated offers (in INR): INR 18.46 LPA.
- Percentage of offers to active applicants: 27.11%

Table 9: Ph.D. Student recruitment comparison four years

Academic Year	2023 - 2024	2022 – 2023	2021 – 2022	2020 – 2021
Total Participated	118	131	67	76
Total Placed	32	41	30	14

Table 10: Average Salary, International and Pre-Placement Offer Details

Description	2023 – 24	2022 – 23
Median Salary (CTC, in LPA*)	17.92	16.66
Average CTC (in LPA*)	23.50	21.82
Total Number of International Offers	76	65
Total Number of Pre-Placement Offers	258	194

* LPA = Lakhs Per Annum (in INR)

Year-wise comparison of placement

Despite the challenging market situation this year, IIT Bombay continued to be the preferred institute for most of the top firms. Table 11 and Figure 6 show the comparison of students placed over the last four years from the major degree programs.

Table 11: Comparison of the number of students placed in the last four years

Program	2020 – 21	2021 – 22	2022 – 23	2023 - 24
B.Tech.	468	544	598	683
Dual Degree (B.Tech. + M.Tech.)	132	184	178	152
M.Tech.	406	523	479	415
Others	144	190	261	225
Total	1150	1441	1516	1475

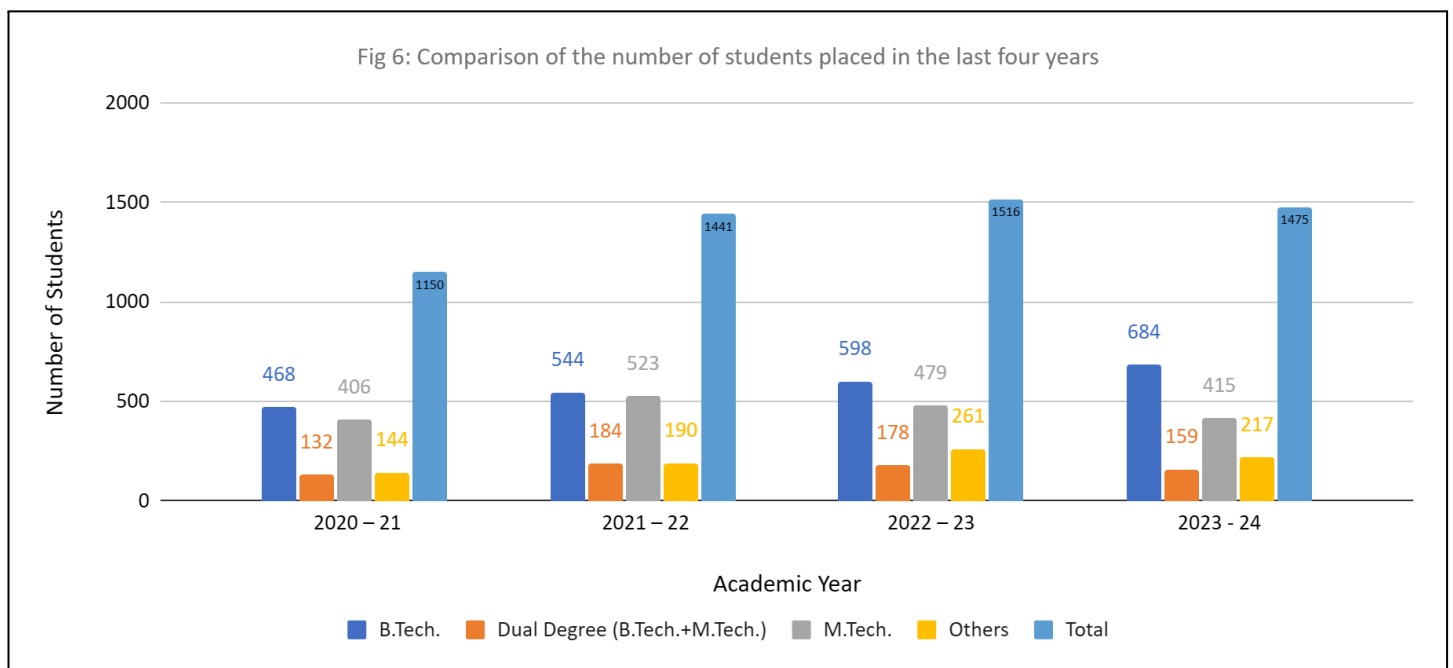


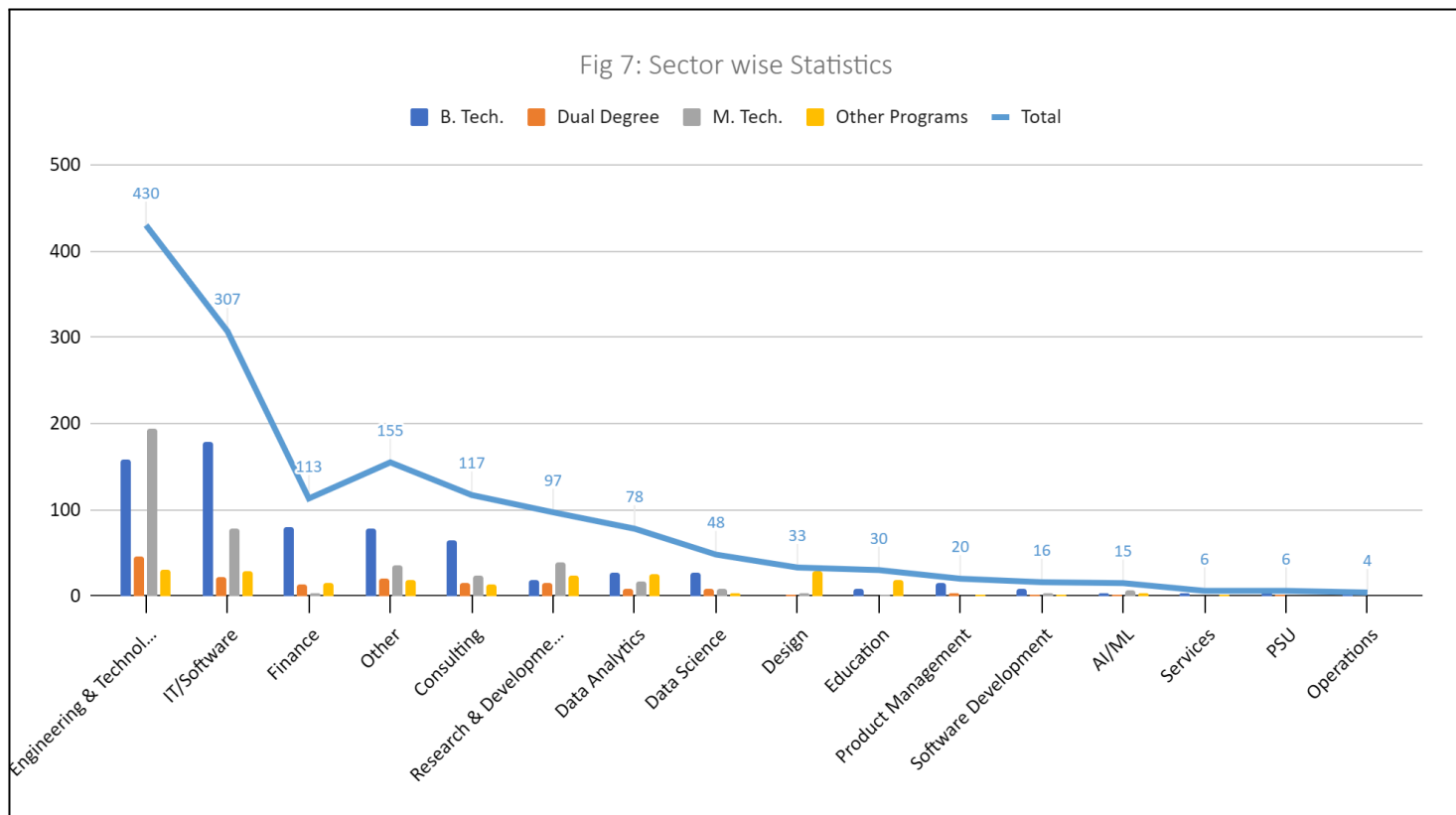
Table 12: Sector-wise statistics, Number of total offers for different programs

Sectors	B. Tech.	Dual Degree	M. Tech.	Other Programs	Total
Engineering & Technology	159	46	194	31	430
IT/Software	178	22	78	29	307
Finance	80	14	3	16	113
Consulting	65	15	23	14	117
Research & Development	19	15	39	24	97
Data Analytics	27	9	17	25	78
Data Science	27	9	9	3	48
Design	0	1	3	29	33
Education	9	0	2	19	30
Product Management	15	4	0	1	20
Software Development	8	2	4	2	16
AI/ML	4	1	7	3	15
Services	4	0	0	2	6
PSU	5	1	0	0	6
Operations	4	0	0	0	4
Other	79	21	36	19	155
Total	683	160	415	217	1475

Note:

1. Dual Degree mention includes all Dual degrees offered by various departments and centers such as B. Tech. + M. Tech., B.S. + M. Tech. and not including B. Des. + M. Des.

2. Other programs include PhD, M.Sc. and all other degrees not to mention



Internships 2023 – 2024

PPO at IIT Bombay has improved this year, recruiter interest was highest for computer science followed by core engineering.

Pre-final year students were offered Pre-placement Offers (PPOs) in May/June 2024.

A total of 300 PPOs were received, out of which, 258 were accepted by students.

Overall, these pre-placement offers were made after the completion of the internship at respective companies.

Department-wise internship offers

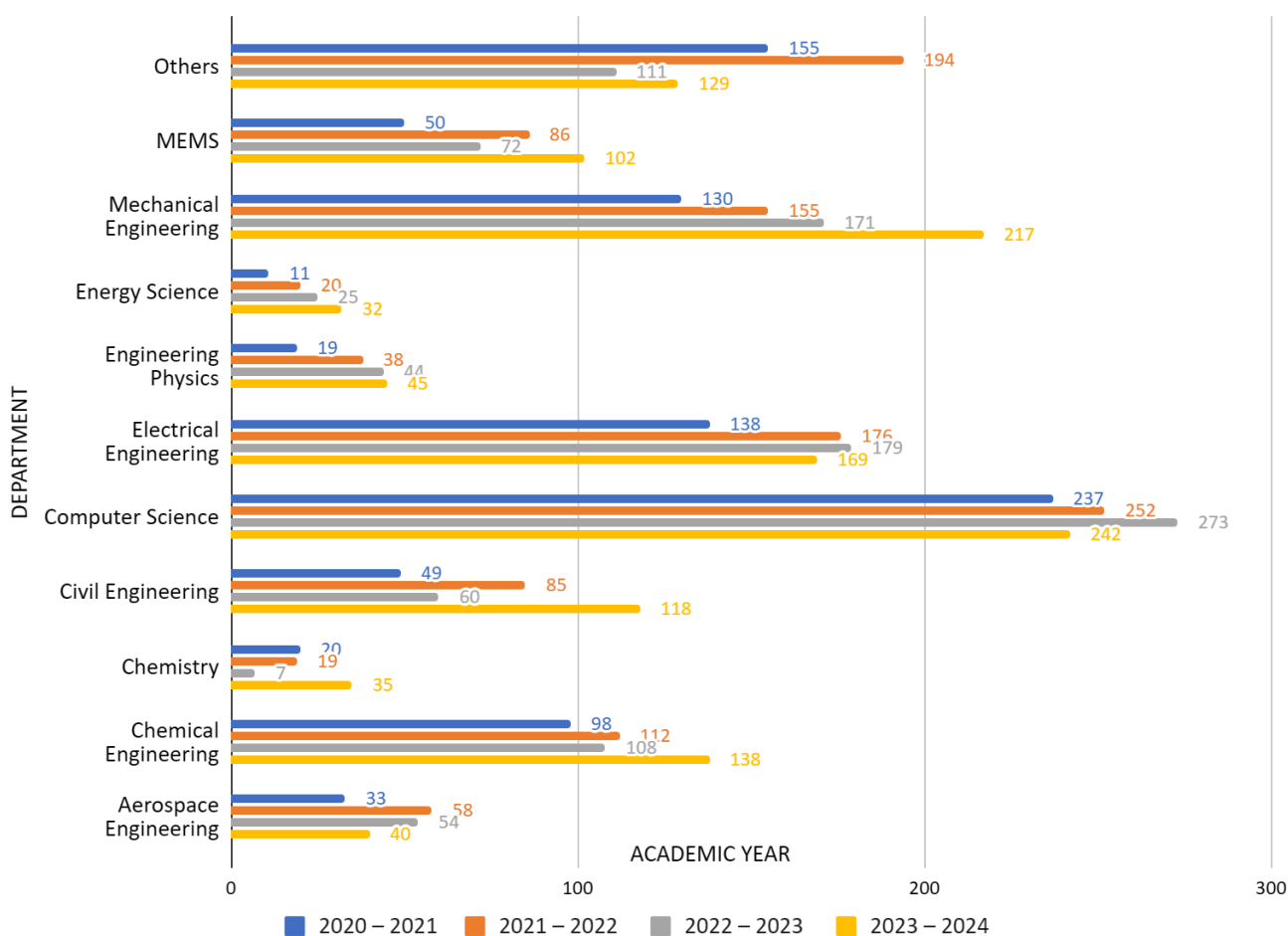
This year students from all the departments were in demand by firms and universities alike for internship positions, with a thirteen percent (13%) increase in numbers. The demand for students from departments such as Computer Science was strong, and Chemical, Civil, Mechanical, and MEMS was high. A slight decrease in the number of M.Sc. internships and an increase in Design internships was also observed in comparison with the previous year. Table 12 presents the department-wise distribution of internship offers made over the past 4 years.

Table 13: Department-wise internship selections over four years

Department	2020 – 2021	2021 – 2022	2022 – 2023	2023 – 2024
Aerospace Engineering	33	58	54	40
Chemical Engineering	98	112	108	138
Chemistry	20	19	7	35
Civil Engineering	49	85	60	118
Computer Science	237	252	273	242
Electrical Engineering	138	176	179	169
Engineering Physics	19	38	44	45
Energy Science	11	20	25	32
Mechanical Engineering	130	155	171	217
MEMS	50	86	72	102
Others*	155	194	111	129
Total	940	1195	1104	1267

*Includes students from Industrial Design Center, Mathematics, and Economics, etc.

Fig 8 : Department wise Internship comparison over four years



Summer vs. Winter Internship Offers

Summer internships usually begin in May and continue till mid-July, whereas winter internships are pursued in the month of December. The number of summer internship offers exceeds the number of winter internships, which is attributable mainly to the longer duration available in summer.

Table 14. Summer vs. winter internship offers.

Total number of internships	Summer internships	Winter internships
1267	1178	89

Companies vs. Universities Internship Offers

Companies of various business sectors offer internship positions to students. This option presents an opportunity to gain industrial exposure and broaden one's skill set in the domain of interest. A few years ago, the Institute started a credit-based internship program, by means of which the students could leverage their performance in their internship towards the academic credit requirement.

Table 15. Companies vs. Universities Internship Offers

Total number of internships	Company offers	University offers
1267	1177	90

A major influence on a student's career path tends to be the internships they undertake during their third-year summers. In all courses, 430 students pursued core internships related to their department, and 740 students pursued non-core internships in other companies.

Conclusion

The companies recruited in physical and some opted for virtual mode throughout the placement season in academic year 2023 - 24. The number of registered students is 2414 in the current placement drive and has increased by 11 % in comparison with the year before. IIT Bombay has achieved the second highest of 1475 this year, compared to the highest ever number of students placed in A.Y. 2022 - 23 with the total number of accepted offers being 1516. The placement season was successfully completed with three out of four students securing desired job profiles despite the challenging job scenario. The total recruited Ph.D. students are 32 out of 118 active participants. Considering the total number of participating students, the placement percentage is nearly 75%. Most of the remaining unplaced students have identified avenues to be gainfully employed. Some of the unplaced students prefer higher studies, self-employment, or entrepreneurship over the jobs being offered to them. Almost all of the participating companies have honored their job offers. The overall average salary packages (based on CTC) showed an increase of 7.7 % over last year i.e. from INR 21.82 LPA to INR 23.5 LPA. The job scenario remains optimistic based on placement data over the last two years as the job generation has been robust after the resumption of economic activity subsequent to the COVID–19 pandemic and uncertainty in the job market. The total number of companies offering jobs has increased from 324 companies last year to 364 this year, a 12% increase. Overall, the upward trend of placements continued in the season 2023 – 24, confirming that IIT Bombay is the preferred recruiting destination for major Indian and multinational companies.

Annexure 1: Department-wise Statistics for year 2023 – 2024

Department/Center	Program	Participated	Placed	% Placed
Aerospace Engineering	B.Tech.	72	48	66.67
	M.Tech.	37	24	64.86
	Dual Degree (B.Tech. + M.Tech.)	4	3	75.00
	Ph.D.	6	1	16.67
Department Total		119	76	63.87
Applied Statistics and Informatics	M.Sc.	30	24	80
Department total		30	24	80
Biosciences and Bioengineering	M.Sc.	16	10	62.5
	Dual Degree (M.Sc. + Ph.D.)	0	0	0
	Ph.D.	5	1	20
Department total		21	11	52.38
Biomedical Engineering	M.Tech.	13	12	92.31
	Ph.D. and M. Tech. + Ph.D.	2	0	0
Department total		15	12	80
Centre for Policy Studies	M.P.P	6	0	0
Center total		6	0	0
Centre for Research In Nanotechnology and Science	Ph.D.	4	2	50
Center total		4	2	50
Centre for Urban Science and Engineering	M.U.D.E	1	0	0
	M.Tech	8	5	62.5
Center total		2	2	100
Chemical Engineering	B.Tech.	128	105	82.03
	M.Tech.	11	10	90.90
	Ph.D. and M. Tech. + Ph.D	15	0	0
	M.Sc. by research (Exit Degree)	1	0	0
	Dual Degree (B.Tech. + M.Tech.)	5	4	80
Department total		160	119	68.75

Department/Center	Program	Participated	Placed	% Placed
Chemistry	B.S.	19	9	47.37
	M.Sc.	28	10	35.71
	Ph.D.	9	1	11.11
	Dual Degree (B.S. + M.Tech.)	2	2	100.00
Department total		59	22	37.28
Civil Engineering	B.Tech.	97	80	82.47
	M.Tech.	41	30	73.17
	Dual Degree (M.Tech. + Ph.D.)	1	0	0.00
	Ph.D.	5	2	40.00
	Dual Degree (B.Tech. + M.Tech.)	2	1	50.00
Department total		146	113	77.40
Computer Science and Engineering	B.Tech.	162	147	90.74
	M.Tech.	76	69	90.79
	M.S. by research	14	14	100.00
	M.S. by research (Exit Degree)	1	0	0.00
Department total		254	230	90.55
Earth Sciences (Applied Geology)	M.Sc.	15	9	60
Earth Sciences (Applied Geophysics)	M.Sc.	12	5	41.67
Earth Sciences (Geo-exploration)	M.Tech.	3	0	0
Earth Sciences (Petroleum Geosciences)	M.Tech.	3	0	0
	Ph.D.	1	0	0
Department total		34	14	41.18
Economics	B.S.	28	20	71.43
	Dual Degree (B.S. + M.Tech.)	2	1	50.00
Department total		30	21	70.00
Educational Technology	M.Tech.	2	2	100.00
	Ph.D.	1	0	0.00
Department total		3	2	66.67

Department/Center	Program	Participated	Placed	% Placed
Electrical Engineering	B.Tech.	87	79	90.80
	M.Tech.	113	92	81.42
	Ph.D.	10	2	20.00
	M.S. by research (Exit Degree)	1	0	0.00
	Dual Degree (B.Tech. + M.Tech.)	69	59	85.51
	Dual Degree (M.Tech. + Ph.D.)	1	0	0.00
Department total		281	232	82.56
Energy Science and Engineering	M. Tech.	25	22	88.00
	Dual Degree (B.Tech. + M.Tech.)	24	14	58.33
	Dual Degree (M.Sc. + Ph.D.)	3	0	0.00
	Ph.D.	7	3	42.86
Department total		59	39	66.10
Engineering Physics	B.Tech.	38	27	71.05
	Dual Degree (B.S + M.Tech.)	0	0	0.00
	Dual Degree (B.Tech. + M.Tech.)	3	1	33.33
Department total		41	28	68.29
Environmental Science and Engineering	M.Tech.	18	15	83.33
	M.Sc.	5	3	60.00
	Dual Degree (M.Sc. + Ph.D.)	1	0	0.00
	Dual Degree (B.Tech. + M.Tech.)	20	13	65.00
	Ph.D.	2	2	100.00
Department total		46	34	73.91
Geo-informatics and Natural Resources Engineering	M.Tech.	23	17	73.91
Department total		23	17	73.91
Industrial Engineering & Operations Research	M.Tech.	19	16	84.21
	M.Sc.	16	12	75.0
	M.S. by research (Exit Degree)	1	1	100.00
Department total		36	29	80.55

Department/Center	Program	Participated	Placed	% Placed
Industrial Design Centre	B.Des.	17	9	52.94
	Dual Degree (B.Des. + M. Des.)	10	4	40.00
	M.Des.	63	36	57.14
Department total		90	49	54.44
Humanities & Social Sciences	M.A. by Research	3	0	0
	Ph.D.	2	0	0
Department total		5	0	0
Mathematics	B.S.	13	10	76.92
	M.Sc.	22	9	40.90
	M.S. by research (Exit Degree)	1	0	0.00
	Ph.D.	1	1	100.00
Department total		37	20	54.05
Mechanical Engineering	B.Tech.	154	140	90.90
	Dual Degree (B.Tech. + M.Tech.)	40	39	97.5
	M.S. by research (Exit Degree)	1	0	0.00
	M.Tech.	41	41	100.00
	Ph.D.	24	9	37.50
Department total		260	229	88.07
Metallurgical Engineering and Materials Science (MEMS)	B.Tech.	81	57	70.37
	Dual Degree (B.Tech. + M.Tech.)	24	16	66.67
	M.Tech.	35	30	85.71
	M.S. by research (Exit Degree)	1	0	0.00
	Ph.D.	11	3	27.27
Department total		152	106	69.73
Physics	M.Sc.	14	5	35.71
	Ph.D.	8	2	25.0
Department total		22	7	31.81

Department/Center	Program	Participated	Placed	% Placed
Systems & Control Engineering (SysCon)	M.Tech.	5	5	83.33
	Dual Degree (B.Tech. + M.Tech.)	1	1	100
	Ph.D.	3	1	33.33
Department total		9	7	63.64
Technology and Development (CTARA)	M.Tech.	29	25	86.20
	Ph.D.	1	0	0
Center total		30	25	83.33
Total of All Departments and Centers		1979	1475	74.75