

Test Booklet No.

110672748



Test Booklet Code

14

ENGLISH

KAILASH

Do not open this Test Booklet until you are asked to do so.
This Booklet contains 32 pages, including Rough Pages.

Important Instructions :

1. The Answer Sheet is inside this Test Booklet. When you are directed to open the Test Booklet, take out the Answer Sheet and fill in the particulars on ORIGINAL Copy carefully with blue/black ball point pen only.
2. The test is of 3 hours duration and the Test Booklet contains 180 multiple-choice questions (4 options with a single correct answer) from Physics, Chemistry and Biology (Botany and Zoology).
3. Wherever the symbols/constants are not mentioned, they are to be considered as per their standard meaning/value.
4. Each question carries 4 marks. For each correct response, the candidate will get 4 marks. For each incorrect response, one mark will be deducted from the total scores. The maximum marks are 720.
5. Use Blue/Black Ball Point Pen only for writing particulars on this page/markings responses on the Answer Sheet.
6. Rough work is to be done in the space provided for this purpose in the Test Booklet only.
7. On completion of the test, the candidate must hand over the Answer Sheet (ORIGINAL and OFFICE Copy) to the Invigilator before leaving the Room/Hall. The candidates are allowed to take away this Test Booklet with them.
8. The CODE for this Booklet is "14". Make sure to enter this Booklet code in the OMR Answer Sheet.
9. The candidates should ensure that the Answer Sheet is not folded. Do not make any stray marks on the Answer Sheet. Do not write your Roll No. anywhere else except in the specified space in the Test Booklet/Answer Sheet.
10. Use of white fluid for correction is not permissible on Answer Sheet.
11. Each candidate must show on demand his/her Ad-Card to the Invigilator.
12. No candidate, without special permission of the Centre Superintendent or Invigilator, should leave his/her seat.
13. The candidates should not leave the Examination Hall without handing over their Answer Sheet to the Invigilator on duty and sign (with time) the Attendance Sheet twice. Cases, where a candidate has not signed the Attendance Sheet a second time, will be deemed not to have handed over the Answer Sheet and dealt with as an Unfair Means case.
14. Use of Electronic/Manual Calculator is prohibited.
15. The candidates are governed by all Rules and Regulations of the examination with regard to their conduct in the Examination Room/Hall. All cases of unfair means will be dealt with as per the Rules and Regulations of this examination along with Public Examinations (Prevention of Unfair Means) Act, 2024.
16. No part of the Test Booklet and Answer Sheet shall be detached under any circumstances.
17. The candidates will write the Correct Test Booklet Code as given in the Test Booklet/Answer Sheet in the Attendance Sheet.
18. If a candidate marks more than one answer for a question in the OMR Answer Sheet, it will be treated as incorrect and negative marking will be applicable.

Name of the Candidate (in Capitals) : _____

Roll Number : in figures _____

: in words _____

Centre of Examination (in Capitals) : _____

Candidate's Signature : _____

Invigilator's Signature : _____

pushpa Kumari

Facsimile signature stamp of Centre Superintendent : _____

कक्षा अधीक्षक
कक्षा अधीक्षक
कक्षा अधीक्षक

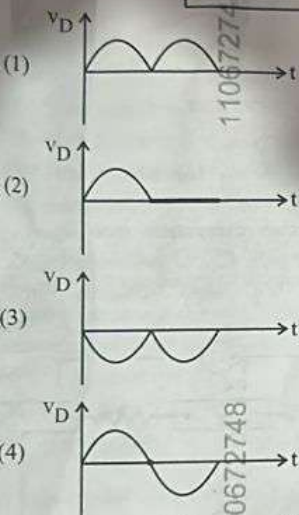
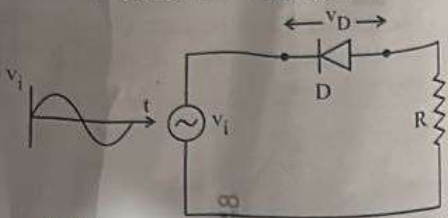
14_English]

lie wavelength
nature of light
of photon
options given

The speed of light in vacuum is taken as unity. If light takes 6 min 40 s to reach the Earth from the Sun, the distance between the Sun and the Earth in new unit is :

- (1) 500 (2) 3×10^8
(3) 400 (4) 3×10^{10}

In the circuit shown below, the voltage appearing across the diode D will be of the form :



10. A submarine is designed to withstand an absolute pressure of 100 atm. How deep can it go below the water surface ?

(Consider the density of water = 1000 kg m^{-3} , $1 \text{ atm} = 1 \times 10^5 \text{ Pa}$ and gravitational acceleration $g = 10 \text{ m/s}^2$)

- (1) 990 m (2) 9000 m
(3) 99 m (4) 9900 m

11. An electric heater supplies heat to a system at a rate of 100 W. If the system performs work at a rate of 75 J/s, then the rate at which internal energy increases will be :

- (1) 125 W (2) 75 W
(3) 100 W (4) 25 W

12. A 100-turn closely wound circular coil of radius 5 cm has a magnetic field of $3.14 \times 10^{-3} \text{ T}$ at its centre. The current flowing through the coil, and the magnitude of the magnetic moment of this coil are, respectively :

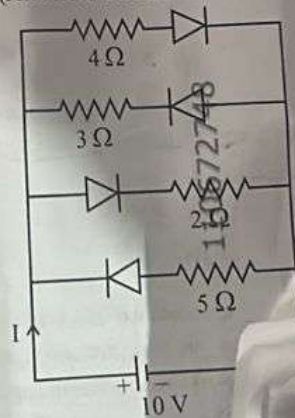
(Take $\mu_0 = 4\pi \times 10^{-7} \text{ T m/A}$)

- (1) 2 A, 4 A m^2 (2) 2.5 A, 20 A m^2
(3) 2.5 A, 2 A m^2 (4) 2 A, 10 A m^2

In Young's double slit experiment, using monochromatic light of wavelength λ , the intensity of light at a point on the screen where the path difference is λ , is K units. The intensity of light at a point where the path difference is $\frac{\lambda}{2}$ will be :

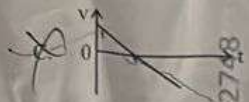
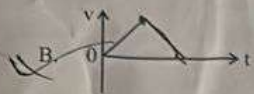
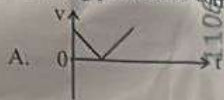
- (1) $\frac{K}{2}$ (2) 2K
(3) $\frac{K}{4}$ (4) K

14. The current I in the circuit shown below is : (All diodes are ideal and identical)



- (1) $\frac{5}{3} \text{ A}$ (2) $\frac{5}{9} \text{ A}$

1. The following plots show variation of velocity (v) with time (t), of a ball thrown vertically upward, and falling back. Which of the following plots is/are correct?



- (1) B only (2) A and E only
 (3) D only (4) C only

2. For a metal of work function 6.6 eV , which of the following wavelengths of incident radiation does not give rise to the photoelectric effect?

(Take Planck's constant as $6.6 \times 10^{-34} \text{ J s}$)

- (1) 50 nm (2) 100 nm
 (3) 150 nm (4) 200 nm

3. The power of a crane, which lifts a mass of 1000 kg to a height of 20 m in 10 s is: \checkmark
 ($g = 9.8 \text{ m/s}^2$)

- (1) 39.2 kW (2) 39.2 W
 (3) 19.6 kW (4) 19.6 W

Match List I with List II :

- | List I | List II |
|---------------------------------|------------------------------|
| A. $E = hv$ | I. de Broglie wavelength |
| B. Diffraction and Interference | II. Particle nature of light |
| C. $\lambda = h/p$ | III. Wave nature of light |
| D. Compton effect | IV. Energy of photon |

Choose the correct answer from the options given below :

- (1) A-IV, B-I, C-II, D-III
 (2) A-I, B-IV, C-III, D-II
 (3) A-IV, B-III, C-II, D-I
 (4) A-IV, B-III, C-I, D-II

4. The magnitude and direction of the acceleration a , produced in a body of mass 5 kg when two mutually perpendicular forces 8 N and 6 N act on it, are respectively :

- (1) 2 m s^{-2} ; $\tan^{-1}(4/3)$ with 8 N force
 (2) 2 m s^{-2} ; $\tan^{-1}(3/4)$ with 8 N force
 (3) 2 m s^{-2} ; $\tan^{-1}(3/4)$ with 6 N force
 (4) 20 m s^{-2} ; $\tan^{-1}(4/3)$ with 8 N force

5. The sum of kinetic energy and potential energy of a simple pendulum bob is 0.02 joule. The speed of the simple pendulum bob at equilibrium position is approximately :

- (Consider mass of the bob = 20 g)
 (1) 1.41 m/s (2) 1.41 m/s
 (3) 2.0 m/s (4) 0.2 m/s

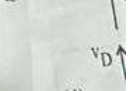
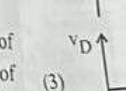
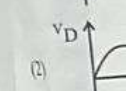
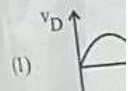
6. A box of mass 15 kg is kept on the floor of a stationary trolley. The coefficient of static friction between the box and the trolley is 0.12. Keeping the box in stationary state over the trolley, the maximum acceleration with which the trolley can be moved horizontally in m s^{-2} is:

- ($g = 10 \text{ m/s}^2$)
 (1) 1.2 (2) 1.8
 (3) 1.5 (4) 2.1

The speed of light in light takes 6 min 40 s from sun, the distance between sun and earth is:

- (1) 500
 (3) 400

In the circuit shown across the diode D



7. A submersible is at a depth of 1000 m in water. The pressure exerted by the water at this depth is (1 atm = 10^5 N/m^2)
 (1) 10 atm
 (3) 11 atm

15. In a concave lens, a ray of light emanating from the object parallel to the principal axis of the lens, after refraction:
- (1) passes through the second principal focus.
 - (2) appears to diverge from the first principal focus.
 - (3) emerges parallel to the principal axis.
 - (4) passes through $2F$, which is the radius of curvature of the lens.

16. A galvanometer of resistance 100Ω gives full scale deflection for a current of 1 mA . It is converted into an ammeter of range $0 - 10 \text{ A}$. The shunt required is:

- (1) 0.10Ω
- (2) 0.001Ω
- (3) 1.0Ω
- (4) 0.01Ω

17. In the first excited state of hydrogen atom, the energy of its electron is -3.4 eV . The radial distance of the electron from the hydrogen nucleus in this case is approximately:

- (Take $1 \text{ eV} = 1.6 \times 10^{-19} \text{ J}$, $e = 1.6 \times 10^{-19} \text{ C}$ and $\frac{1}{4\pi\epsilon_0} = 9 \times 10^9 \text{ N m}^2/\text{C}^2$)
- (1) $2.1 \times 10^{-11} \text{ m}$
 - (2) $2.1 \times 10^{-10} \text{ m}$
 - (3) $2.1 \times 10^{-9} \text{ m}$
 - (4) $2.1 \times 10^{-8} \text{ m}$

18. The amount of work done to raise a mass 'm' from the surface of the Earth to a height equal to the radius of the Earth 'R', will be:

- (1) mgR
- (2) $2mgR$
- (3) $mg\frac{R}{4}$
- (4) $mg\frac{R}{2}$

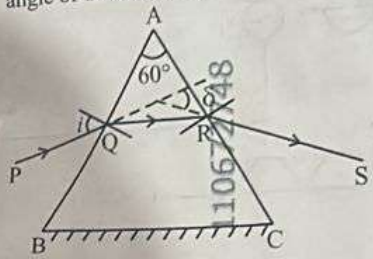
19. An ac circuit contains a resistance of $1 \text{ k}\Omega$, a capacitor of $0.1 \mu\text{F}$ and an inductor of 1 mH connected in series. The resonance frequency of the circuit is approximately:

- (1) 13.5 kHz
- (2) 15.9 kHz
- (3) 10.1 kHz
- (4) 20.7 kHz

20. Consider two uncharged capacitors of capacitance 200 pF . One of them is charged by a 100 V supply and disconnected. Now the capacitor is connected to the uncharged capacitor. The amount of electrostatic energy lost in the process is:

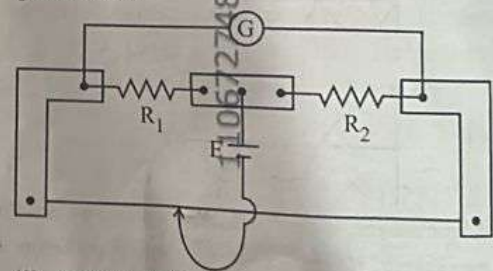
- (1) 1.0 J
- (2) 0.5 J
- (3) $1.0 \times 10^{-6} \text{ J}$
- (4) $0.5 \times 10^{-6} \text{ J}$

21. A ray of monochromatic light is passing through an equilateral prism (ABC) as shown in the figure. The refracted ray (QR) is parallel to its base (BC) and the angle of incidence (i) is 50° . Then the angle of deviation (δ) is:



- (1) 45°
- (2) 40°
- (3) 35°
- (4) 55°

22. In a metre bridge experiment (see figure), the positions of the cell, E, and galvanometer, G, are interchanged. We shall observe in the galvanometer:



- (1) Only the left-sided deflection
- (2) Both right-sided and left-sided deflection and at balance point, no deflection
- (3) Only the right-sided deflection
- (4) There will be no deflection irrespective of the position of the jockey

A flask contains argon and chlorine in the ratio 2 : 1 by mass. The temperature of the mixture is 27°C. The ratio of root mean square speed of the molecules of the two gases $\left(\frac{v_{rms}^{Ar}}{v_{rms}^{Cl}}\right)$ is :

(Atomic mass of argon = 40.0 u and molecular mass of chlorine = 70.9 u)

- (1) $\frac{7}{4}$ (2) $\frac{\sqrt{7}}{2}$
 (3) $\frac{2}{\sqrt{7}}$ (4) $\frac{7}{2}$

Two statements are given below :

- A. When the forward bias voltage across a p-n junction diode increases above a certain threshold voltage, the diode current increases significantly.
 B. This current is called reverse saturation current.

Choose the correct answer from the options given below :

- (1) Statement A is true but Statement B is false
 (2) Both Statements A and B are true
 (3) Both Statements A and B are false
 (4) Statement A is false, but Statement B is true

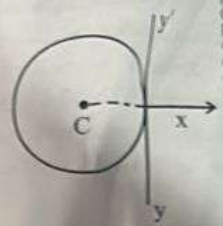
25. For a travelling harmonic wave $y(x, t) = 2.0 \cos 2\pi(10t - 0.0080x + 0.35)$, where x and y are in cm and t in s. The phase difference between oscillatory motion of two points separated by a distance of 0.5 m is :

- (1) 0.8π rad (2) 8π rad
 (3) 0.008π rad (4) 0.08π rad

26. A rectangular wire loop of sides 8 cm and 3 cm with a small cut, is moving out of a region of uniform magnetic field of magnitude 0.3 T directed normal to the plane of the loop. The emf developed across the cut, if the velocity of the loop is 2 cm s^{-1} , in a direction normal to the shorter side of the loop, will be :

- (1) 4.8×10^{-4} volt (2) 1.3×10^{-4} volt
 (3) 1.2×10^{-4} volt (4) 1.8×10^{-4} volt

27. A thin wire of length 'L' and linear mass density 'm' is bent into a circular ring (in x-y plane) with centre 'C' as shown in figure. The moment of inertia of the ring about an axis yy' will be :



- (1) $\frac{3mL^2}{8\pi}$ (2) $\frac{3mL^2}{8\pi^2}$
 (3) $\frac{3mL^3}{8\pi}$ (4) $\frac{3mL^3}{8\pi^2}$

28. A resistor is connected to a battery of 12 V emf and internal resistance 2Ω . If the current in the circuit is 0.6 A, the terminal voltage of the battery is :

- (1) 10.8 V (2) 12 V
 (3) 12 V (4) 10 V

29. When a ruler falls vertically, 5 different persons catch it with different reaction times. ($g = 9.8 \text{ m s}^{-2}$)

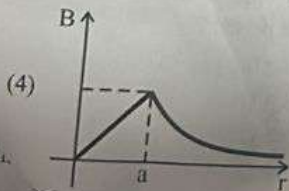
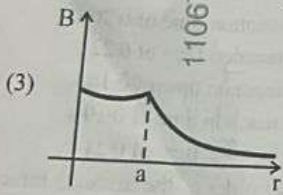
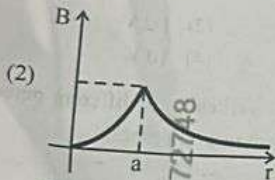
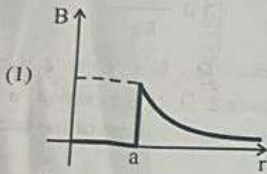
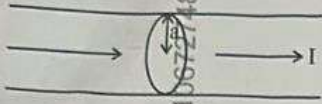
- A. Person A has reaction time of 0.20 s.
 B. Person B has reaction time of 0.22 s.
 C. Person C has reaction time of 0.18 s.
 D. Person D has reaction time of 0.19 s.
 E. Person E has reaction time of 0.21 s.

What is the correct order of the distance travelled by the ruler for each person ?

- (1) $C > D > A > E > B$
 (2) $C > D > A > B > E$
 (3) $B > E > A > D > C$
 (4) $B > E > A > C > D$

30. The angular speed of a flywheel is increased from 600 rpm to 1200 rpm in 10 s. The number of revolutions completed by the flywheel during this time is :
- (1) 300 (2) 150
(3) 900 (4) 600

31. The figure given below shows a long straight solid wire of circular cross-section of radius 'a' carrying steady current I. The current I is uniformly distributed across its cross-section. The plot which correctly represents the variation of magnetic field (B) with distance (r) from the axis of the conductor in the region is :



Four statements are given (A is mass number)

- A. The volume of a nucleus is proportional to $A^{1/3}$.
 B. The volume of a nucleus is proportional to A^2 .
 C. The difference in mass of an atom and a nucleus is called the mass defect.
 D. The difference in mass of a nucleus and its constituents is called the mass defect.

Choose the correct answer from the options given below :

- (1) A and D are true, but B and C are false
 (2) B and D are true, but A and C are false
 (3) B and C are true, but A and D are false
 (4) A and C are true, but B and D are false

33. Savitha, a XI standard student, while conducting an experiment to determine the effective length of a simple pendulum L, notes down the data of time taken to complete 30 oscillations as 60 s and calculates the length of the simple pendulum as :

(Take $\pi^2 = 9.8$, and $g = 9.8 \text{ m/s}^2$)

- (1) 2 m (2) 1 m
(3) 0.75 m (4) 1.5 m

34. In a vernier callipers, 20 VSD coincide with 16 MSD (each division of length 1 mm). The least count of the vernier callipers is :

- (1) 0.1 cm (2) 0.02 cm
(3) 0.01 cm (4) 0.2 cm

35. Each side of a metallic cube of mass 5.580 kg is measured to be 9.0 cm. Keeping the significant figures in view, the density of the material of the cube can be best expressed as $X \times 10^3 \text{ kg m}^{-3}$ where the value of X is :

- (1) 7.654 (2) 7.6
(3) 7.65 (4) 7.7

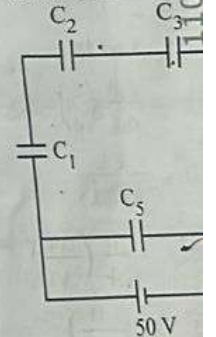
In interference and diffraction, light is redistributed. If it reduces intensity in a dark fringe, it increases intensity in a bright fringe.

- A. As there is no gain or loss of energy, conservation of energy is observed in diffraction phenomena.
 B. Diffraction and interference are exhibited only by light.

Choose the correct answer from the options given below :

- (1) A is false, but B is true
 (2) A is true and B is false
 (3) A is true, but B is false
 (4) Both A and B are true

Five capacitors of capacitance $C_1 = C_2 = C_3 = C_4 = C_5$ are connected as shown in the circuit diagram.



The equivalent capacitance of the circuit is :

- (1) $5 \mu\text{F}$, $125 \mu\text{C}$
 (2) $4 \mu\text{F}$, $250 \mu\text{C}$
 (3) $5 \mu\text{F}$, $250 \mu\text{C}$
 (4) $5 \mu\text{F}$, $125 \mu\text{C}$

41. Which of the following statements are correct?
- A. The electrostatic field is normal to the surface of a charged conductor.
 - B. The electrostatic field is normal to the surface of a charged conductor, the electrostatic field must be normal to the surface at every point.
 - C. The electrostatic potential is zero everywhere inside a charged conductor.
 - D. The electrostatic potential is zero everywhere inside a charged conductor.

Choose the correct answer from the options given below.

- (1) A and D only
 (2) A and E only
 (3) C and E only
 (4) A and D only

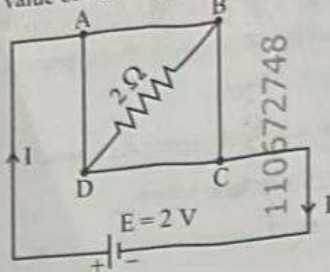
42. Match List I with List II:

List I (Electromagnetic wave)	List II (Production)
A. Microwave	I. Electrons in atoms emit light when they move from a higher energy level to a lower energy level
B. Visible light	II. Radioactive decay of nucleus
C. Gamma ray	III. Vibration of atoms and molecules
D. Infra-red rays	IV. Klystron valve or magnetron valve

Choose the correct answer from the options given below:

- (1) A-III, B-I, C-II, D-IV
 (2) A-III, B-IV, C-I, D-II
 (3) A-IV, B-I, C-II, D-III
 (4) A-IV, B-III, C-II, D-I

43. A uniform metallic wire having resistance $4\ \Omega$ is bent to form a square loop ABCD (see figure). A resistance of $2\ \Omega$ is connected between points A and C and a battery of $2\ \text{V}$ is connected between points A and C as shown in the figure. The value of current (I) is:



- (1) 4 A
 (2) 8 A
 (3) 4.5 A
 (4) 2 A

44. An unknown nucleus has a nuclear density $2.29 \times 10^{17}\ \text{kg/m}^3$ and mass of $19.926 \times 10^{-27}\ \text{kg}$. Its mass number A is approximately:
 (Take $R_0 = 1.2 \times 10^{-15}\ \text{m}$, $4\pi = 12.56$)

- (1) 12
 (2) 16
 (3) 19
 (4) 20

45. Match List I with List II:

List I	List II
A. Young's Modulus	I. $\frac{\Delta d}{\Delta L} \left(\frac{L}{d} \right)$
B. Compressibility	II. $\frac{FL}{A(\Delta L)}$
C. Bulk Modulus	III. $-\frac{1}{\Delta P} \left(\frac{\Delta V}{V} \right)$
D. Poisson's Ratio	IV. $-P \left(\frac{V}{\Delta V} \right)$

Choose the correct answer from the options given below:

- (1) A-II, B-III, C-IV, D-I
 (2) A-III, B-II, C-I, D-IV
 (3) A-I, B-IV, C-III, D-II
 (4) A-IV, B-I, C-II, D-III

The correct state structure of DNA

- (1) DNA possess and contain
 (2) DNA possess and contain bases.
 (3) RNA possess and contain
 (4) RNA possess and contain bases.

List I

(Quantum)

- 'n'
 A. 2
 B. 4
 C. 5
 D. 3

Choose the below:

- (1) A-II
 (2) A-III
 (3) A-I
 (4) A-IV

48. During

organic

- (1) ex
 (2) c
 (3) i
 (4) i

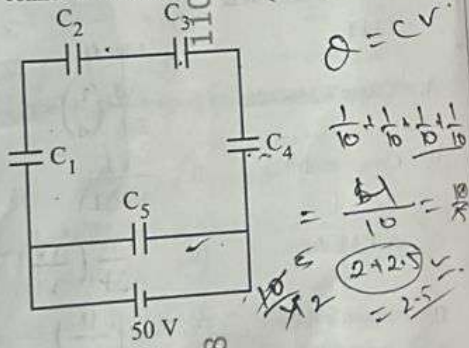
In interference and diffraction, the light energy is redistributed. If it reduces in one region, producing a dark fringe, it increases in another region, producing a bright fringe.

- A. As there is no gain or loss of energy, these phenomena are consistent with the principle of conservation of energy.
- B. Diffraction and interference are characteristics exhibited only by light waves.

Choose the correct answer from the options given below :

- (1) A is false, but B is true
- (2) A is true and B is also true
- (3) A is true, but B is false
- (4) Both A and B are false

37. Five capacitors of capacitances $C_1 = C_2 = C_3 = C_4 = 10 \mu\text{F}$ and $C_5 = 2.5 \mu\text{F}$ are connected as shown along with a battery of 50 V.

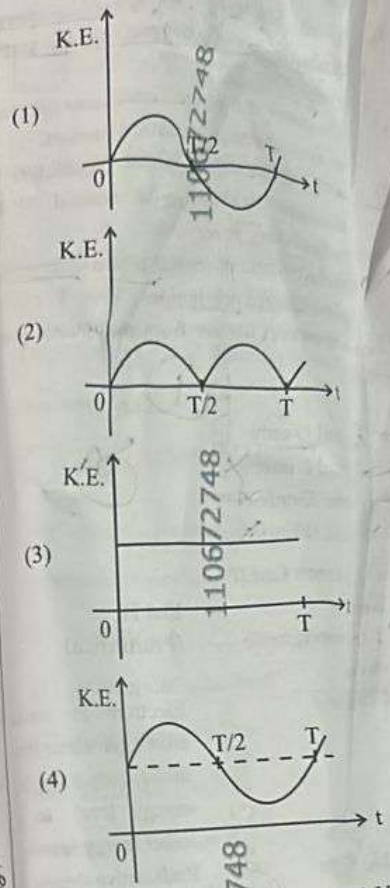


The equivalent capacitance and the charges on each capacitor respectively are :

- (1) $5 \mu\text{F}$, $125 \mu\text{C}$ on C_1 to C_4 and $25 \mu\text{C}$ on C_5
- (2) $4 \mu\text{F}$, $250 \mu\text{C}$ on C_1 to C_4 and $125 \mu\text{C}$ on C_5
- (3) $5 \mu\text{F}$, $250 \mu\text{C}$ on all capacitors
- (4) $5 \mu\text{F}$, $125 \mu\text{C}$ on all capacitors

Handwritten calculation:
 $Q = C \times V$
 $= 2.5 \times 50$

38. For a simple pendulum, having time period T , the variation of kinetic energy (K.E.) with time (t) is represented by :



A room heater is rated 400 W, 220 V. If the supply voltage drops to 200 V, what will be the power consumed (approximately)?

- (1) 121 W (2) 200 W (3) 400 W (4) 331 W

40. The peak value of an alternating current is 5 A and frequency is 60 Hz. How long will the current, starting from zero, take to reach the peak value?

- (1) $\frac{1}{60}$ s
- (3) $\frac{1}{30}$ s

52. The functional group that can be identified through phthalic dye test is:

- (1) Alcohol
- (2) Aldehyde
- (3) Phenolic
- (4) Carboxylic acid

53. A solution of copper sulphate is electrolysed for 10 minutes with a current of 1.5 amperes. The mass of copper deposited at cathode is:

(Given: Molar mass of $\text{Cu} = 63 \text{ g mol}^{-1}$, $1 \text{ F} = 96487 \text{ C mol}^{-1}$)

- (1) 0.2938 g
- (2) 1.7018 g
- (3) 2.436 g
- (4) 0.5876 g

54. Match List I with List II:

List I (Transition metal/ compound/ complex)	List II (Catalytic Role)
A. V_2O_5	Preparation of ammonia from N_2/H_2 mixture
B. Fe	Polymerisation of alkynes
C. PdCl_2	Preparation of H_2SO_4 from SO_2
D. Ni complex	Oxidation of ethyne to ethanal

Choose the correct answer from the options given below:

- (1) A-III, B-I, C-IV, D-II
- (2) A-II, B-III, C-I, D-IV
- (3) A-IV, B-IV, C-I, D-III
- (4) A-IV, B-II, C-III, D-II

55. Match List I with List II:

List I (Complex/ion)	List II (Shape/geometry)
A. $[\text{Pt}(\text{Cl}_2)(\text{NH}_3)_2]$	I. Octahedral
B. $[\text{Co}(\text{NH}_3)_6]\text{Cl}_3$	II. Trigonal bipyramidal
C. $[\text{NiCl}_4]^{2-}$	III. Square planar
D. $[\text{Fe}(\text{CO})_5]$	IV. Tetrahedral

Choose the correct answer from the options below:

- (1) A-IV, B-I, C-III, D-II
- (2) A-III, B-I, C-IV, D-II
- (3) A-I, B-III, C-IV, D-II
- (4) A-III, B-IV, C-I, D-II

56. Identify the incorrect statement from following:

- (1) The IUPAC name of the element with atomic number 107 is Unnilseptium.
- (2) The oxidation state and covalency of $[\text{AlCl}(\text{H}_2\text{O})_5]^{2+}$ are 3 and 6 respectively.
- (3) The largest and the smallest species among Mg , Mg^{2+} , Al and Al^{3+} are Al and Mg^{2+} respectively.
- (4) The similarity in behaviour of Li with Mg referred to as 'diagonal relationship'.

57. Given below is an expression for the rate constant of a first order reaction occurring at a certain temperature, T (K).

$$\ln k = 14.34 - \frac{1.25 \times 10^4}{T}$$

The energy of activation in kcal mol^{-1} for the reaction is:

- (Given: k in s^{-1} , $R = 1.987 \text{ cal mol}^{-1} \text{ K}^{-1}$)
- (1) 14.34
 - (2) 18.63
 - (3) 24.84
 - (4) 12.42

Mg 10 13 12

resistance 4 Ω
D) (see figure)
between points
connected across
figure. Now

The correct statement with regard to the secondary structure of DNA/RNA is :

- (1) DNA possesses a single strand helix structure and contains uracil as one of the four bases.
- (2) DNA possesses a double strand helix structure and contains thymine as one of the four bases.
- (3) RNA possesses a double strand helix structure and contains uracil as one of the four bases.
- (4) RNA possesses a single strand helix structure and contains thymine as one of the four bases.

47. Match List I with List II :

List I (Quantum Numbers)		List II (Orbital)	
A. 2	1	I. 3d	
B. 4	0s	II. 2p	
C. 5	3f	III. 4s	
D. 3	2d	IV. 5f	

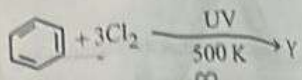
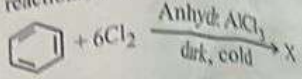
Choose the correct answer from the options given below :

- (1) A-II, B-III, C-I, D-IV
- (2) A-II, B-III, C-IV, D-I
- (3) A-IV, B-II, C-III, D-I
- (4) A-I, B-II, C-III, D-IV

48. During Lassaigne's test, the elements present in an organic compound are converted from :

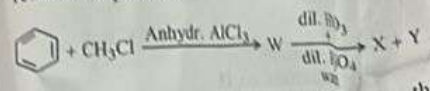
- (1) covalent form to ionic form
- (2) covalent form to covalent form
- (3) ionic form to ionic form
- (4) ionic form to covalent form

49. The number of chlorine atoms present in the organic products X and Y of the following reactions, respectively, are :



- (1) 3 and 6
- (2) 6 and 3
- (3) 3 and 3
- (4) 6 and 6

Two products X and Y are formed in the following reaction sequence.



The suitable method that can be used for the separation of products X and Y is :

- (1) Sublimation
- (2) Differential extraction
- (3) Continuous extraction
- (4) Fractional distillation

50. Identify the correct statement about ClF_3 from the following options :

- (1) It has T-shaped geometry with three lone pairs on Cl atom.
- (2) It has a planar trigonal geometry with two lone pairs on Cl atom.
- (3) It has T-shaped geometry with two lone pairs on Cl atom.
- (4) It has a trigonal pyramidal geometry with two lone pairs on Cl atom.

8. Phenolphthalein is used as an indicator for the titration of sodium hydroxide solution against a standard solution of oxalic acid. The colour change that is observed at an alkaline pH close to the equivalence point during this titration is :

- (1) colourless to pink
- (2) pinkish red to yellow
- (3) pink to colourless
- (4) yellow to pinkish red

9. Methane reacts with steam at 1273 K in the presence of nickel catalyst to form :

- (1) CO and H₂
- (2) CO₂ and H₂
- (3) CO and H₂O
- (4) CO₂ and H₂O

60. Match List I with List II :

- List I**
- A. H3C-CH(CH3)-C6H5 → H3C-CH(OH)-C6H5
 - B. CH3COOH → CH3CH2OH
 - C. CH3CH2CH2OH → CH3-CH(OH)-CH3
 - D. C6H6 → C6H5OH

- List II**
- I. (i) oleum; (ii) NaOH, Δ; (iii) H⁺
 - II. (i) O₂; (ii) H₂O/H⁺
 - III. (i) CH₃OH, H⁺; (ii) H₂, catalyst
 - IV. (i) conc. H₂SO₄, Δ; (ii) H⁺/H₂O

Choose the correct answer from the options given below :

- (1) A-I, B-III, C-IV, D-II
- (2) A-II, B-III, C-I, D-IV
- (3) A-II, B-III, C-IV, D-I
- (4) A-II, B-IV, C-III, D-I

61. The pair of molecules that are metamer among the following is :

- (1) CH3OCH2CH2CH3 and CH3CH2OCH2CH3
- (2) CH3CH2CH2CH2CH3 and (CH3)2CHCH2CH3
- (3) H3C-C(=O)-CH3 and H3C-CH2-C(=O)-H
- (4) CH3CH2CH2OH and CH3-CH(OH)-CH3

Match List I with List II :

- | | |
|--|---------------------|
| List I | List II |
| (Complex) | (Type of isomerism) |
| A. [Pt(NH ₃) ₂ Cl ₂] | I. Optical |
| B. [Co(en) ₃] ³⁺ | II. Solvate |
| C. [Co(NH ₃) ₅ NO ₂]Cl ₂ | III. Geometrical |
| D. [Cr(H ₂ O) ₆]Cl ₃ | IV. Linkage |

Choose the correct answer from the options given below :

- (1) A-II, B-IV, C-III, D-I
- (2) A-III, B-I, C-II, D-IV
- (3) A-I, B-III, C-II, D-IV
- (4) A-III, B-I, C-IV, D-II

62. The number of hydrogen atoms present in 54 g of urea is :

$N_2 + 3H_2 \rightarrow 2NH_3$

(Given : Molar mass of urea : 60 g mol⁻¹)

$N_A : 6.022 \times 10^{23}$ particles mol⁻¹

(1) 2.168×10^{22}

(2) 2.168×10^{23}

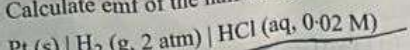
(3) 1.084×10^{22}

(4) 1.084×10^{23}

64. The calculated 'spin-only' magnetic moment of $Ir^{2+}(3d^2)$ is :

- (1) 3.87 BM
- (2) 4.90 BM
- (3) 4.90 BM

Calculate emf of the half cell given below :



$$E_{\text{H}_2/\text{H}^+}^{\circ} = 0 \text{ V}$$

$$\text{(Given : } \frac{2 \cdot 303 RT}{F} = 0.059 \text{)}$$

$$\log 2 = 0.3010$$

$$(1) 0.035 \text{ V}$$

$$(3) -0.109 \text{ V}$$

71. At 298 K, a certain buffer solution contains equal concentrations of X^- and HX , K_b for X^- is 10^{-10} . What is the pH of this buffer solution ?

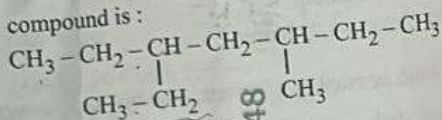
$$(1) 4$$

$$(2) 6$$

$$(3) 2$$

$$(4) 10$$

72. The correct, IUPAC name of the following compound is :



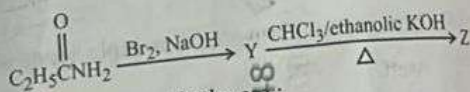
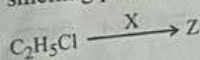
(1) 3-methyl-5-ethylheptane

(2) 3-ethyl-5-methylheptane

(3) 3,5-diethylhexane

(4) 2,4-diethylhexane

73. The following two reactions give the same foul smelling product Z.



X and Z, respectively, are :

(1) $\text{X} = \text{AgCN}$; $\text{Z} = \text{C}_2\text{H}_5\text{CN}$

(2) $\text{X} = \text{KCN}$; $\text{Z} = \text{C}_2\text{H}_5\text{CN}$

(3) $\text{X} = \text{KCN}$; $\text{Z} = \text{C}_2\text{H}_5\text{NC}$

(4) $\text{X} = \text{AgCN}$; $\text{Z} = \text{C}_2\text{H}_5\text{NC}$

74. Mixture of chloroform and acetone forms a solution with negative deviation from Raoult's law due to

(A) increase in escaping tendency of molecules of each component

(B) repulsive forces.

(C) stronger intermolecular forces between chloroform molecules than those between chloroform and acetone molecules.

(D) formation of hydrogen bonding between acetone and chloroform.

75. Identify the correct statements :

A. The molality of 2.5 g of ethanoic acid (Molar mass : 60 g mol^{-1}) in 75 g of benzene solution is 0.556 m.

B. The molarity of a solution containing 5 g of NaOH (molar mass : 40 g mol^{-1}) in 450 mL of solution is 0.278 M at 298 K.

C. Aquatic species are more comfortable in cold water.

(D) The solubility of gas increases with decrease in pressure.

E. For a binary mixture of A and B, the number of moles of A and B are n_A and n_B respectively. The mole fraction of B will be

$$x_B = \frac{n_B}{n_A + n_B}$$

Choose the correct answer from the options given below :

(A) A and B only

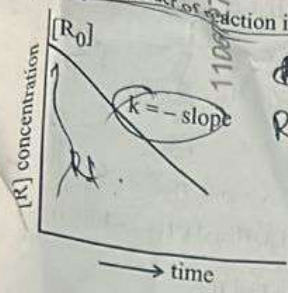
(B) A, D and E only

(C) A, B and C only

(D) A and C only

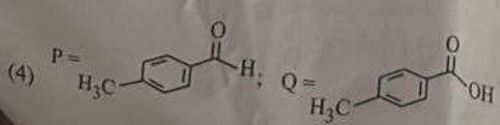
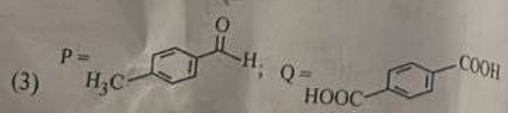
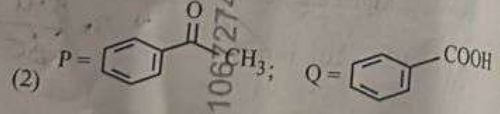
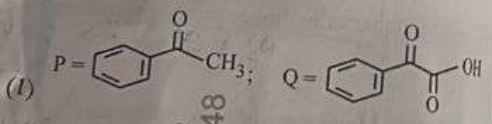
$\frac{81 \times 1000}{40 \times 450} = 9$

65. For a certain reaction $R \rightarrow \text{Product}$, the plot of concentration $[R]$ vs time has a negative slope as shown. The order of reaction is :



- (1) 1
(2) 2
(3) 2.5
(4) 0

66. Compound P (C_8H_8O) gives a red orange precipitate with 2,4-DNP reagent and it does not reduce Fehling's reagent. On drastic oxidation with chromic acid, P gives an aromatic product Q that produces effervescence on treating with aq. $NaHCO_3$. Compounds P and Q, respectively, are :



67. Match List I with List II :

List I (Order of reaction)	List II (Unit of rate constant)
A. Zero order	I. $\text{mol}^{-1} \text{L s}^{-1}$
B. First order	H. $\text{mol}^{-2} \text{L}^2 \text{s}^{-1}$
C. Second order	III. s^{-1}
D. Third order	IV. $\text{mol L}^{-1} \text{s}^{-1}$

Choose the correct answer from the options below :

- (1) A-IV, B-III, C-II, D-I
(2) A-IV, B-III, C-I, D-II
(3) A-IV, B-II, C-I, D-III
(4) A-I, B-II, C-III, D-IV

68. Although +3 oxidation state is most common lanthanoids, cerium still shows +4 oxidation because :

- (1) After losing one more electron, it acquires $4f^{14}$ electronic configuration.
(2) Its atomic number is 61.
(3) After losing one more electron, it acquires $4f^{14}$ electronic configuration.
(4) Its nearest inert gas is Radon.

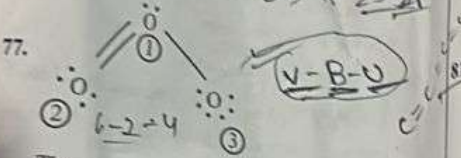
69. In a test tube containing a salt, a few drops of dilute H_2SO_4 was added, which gave colourless vapours having the smell of vinegar. The vapour turned the blue litmus paper red.

Identify the correct anion from the following :

- (1) Carbonate, CO_3^{2-}
(2) Sulphate, SO_4^{2-}
(3) Acetate, CH_3COO^-
(4) Sulphide, S^{2-}

76. Identify the incorrect statement from the following:

- (1) ECl_3 (E = B and Al) is a monomer when E = B and a dimer when E = Al.
- (2) The order of catenation property of Group 14 elements is $C > Si > Ge > Sn$.
- (3) Oxygen exhibits only -2 oxidation state.
- (4) Carbon has the ability to form pπ-pπ multiple bond with itself.



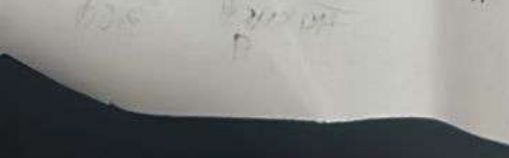
The correct formal charges on oxygen atoms numbered 2, 1 and 3 respectively are:

- (1) -1, 0, +1
- (2) 0, 0, 0
- (3) 0, +1, -1
- (4) +1, 0, -1

78. At a certain temperature, T (K), during a process 500 J is absorbed by the system and work of 200 J is done by the system. Then change in internal energy of the system is:

- (1) 500 J
- (2) 400 J
- (3) 300 J
- (4) 700 J

79. Consider the following reaction:



- (1) $-0.63568 \text{ kJ mol}^{-1}$, spontaneous
- (2) $+0.63568 \text{ kJ mol}^{-1}$, non-spontaneous
- (3) $-1.635 \text{ kJ mol}^{-1}$, spontaneous
- (4) $+1.635 \text{ kJ mol}^{-1}$, non-spontaneous

Select the reagents that reduce nitriles to amines:

- A. (i) $LiAlH_4$; (ii) H_2O
- B. $Sn + HCl$
- C. H_2/Ni
- D. $Na(Hg)/C_2H_5OH$
- E. $Br_2/aq. NaOH$

Choose the correct answer from the options below:

- (1) A, C and D only
- (2) A, B and C only
- (3) B, D and E only
- (4) A, D and E only

81. Which one of the following is an ambident ligand?

- (1) Oxalate
- (2) Ethylenediaminetetraacetate ion
- (3) Thiocyanate
- (4) Ethane-1,2-diamine

82. A bulb is rated at 150 watt, converting 8% into light. If energy of one photon is $4.42 \times 10^{-19} \text{ J}$, how many photons are emitted the bulb per second?

- (1) 1.35×10^{19}
- (2) 2.71×10^{19}
- (3) 27.2×10^{19}
- (4) 4.06×10^{19}

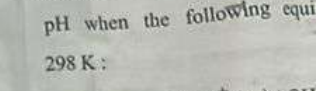
83. Identify the incorrect statement from the following:

- (1) Nitrogen can form pπ-pπ multiple bonds with itself.
- (2) $P(C_2H_5)_3$ and $As(C_6H_5)_3$ form dπ-dπ bond with transition metals.
- (3) Nitrogen can form dπ-pπ bond with oxygen.
- (4) Phosphorus, arsenic and antimony show catenation property.

The correct order of increasing metallic character of Na, Be, P, Mg and Si is:

- (1) $P < Si < Be < Mg < Na$
- (2) $Be < Si < P < Mg < Na$
- (3) $P < Si < Na < Mg < Be$
- (4) $P < Mg < Be < Si < Na$

In a qualitative analysis, Bi^{3+} appearance of precipitate of $BiO(OH)$ at pH when the following equilibrium is at 298 K:



$K = 4 \times 10^{-10}$

(Given: $\log 2 = 0.3010$)

- (1) 4.699
- (2) 5.286
- (3) 5.286
- (4) 4.699

Match List I with List II:

List I	List II
A. C_2H_4	I. 1σ
B. C_2H_2	II. 1σ
C. CH_4	III. 4σ
D. NH_3	IV. 5σ

Choose the correct answer below:

- (1) A-I, B-II, C-IV, D-III
- (2) A-II, B-III, C-I, D-IV
- (3) A-III, B-IV, C-II, D-I
- (4) A-IV, B-I, C-III, D-II

Given below are certain reactions for which K_p is given:

- (1) $N_2(g) + O_2(g) \rightleftharpoons 2NO(g)$
- (2) $H_2O(g) + CO(g) \rightleftharpoons H_2(g) + CO_2(g)$
- (3) $H_2(g) + I_2(g) \rightleftharpoons 2HI(g)$
- (4) $N_2(g) + 3H_2(g) \rightleftharpoons 2NH_3(g)$

5. Which of the following statements are true with reference to the sex-determination in honeybees?
- A. An offspring formed from the union of a sperm and an egg, develops as a female (queen or worker).
 - B. An unfertilized egg develops as a male by parthenogenesis.
 - C. A male has half the number of chromosomes than that of a female.
 - D. Males produce sperms by meiosis.
 - E. Honeybees have a haplodiploid sex-determination system.

Choose the correct answer from the options given below :

- (1) A, B, C and E only
- (2) B, C, D and E only
- (3) A, B, C and D only
- (4) A, B, D and E only

96. Match List I with List II :

List I (Process)	List II (Location)
A. Glycolysis	I. Inner mitochondrial membrane
B. ETS	II. Mitochondrial matrix
C. Accumulation of protons	III. Cytoplasm
D. Krebs' cycle	IV. Intermembrane space

Choose the correct answer from the options given below :

- (1) A-IV, B-II, C-I, D-III
- (2) A-I, B-IV, C-III, D-II
- (3) A-II, B-III, C-IV, D-I
- (4) A-III, B-I, C-IV, D-II

97. How many ATP and NADPH molecules are required to make one molecule of glucose through the Calvin pathway?

- (1) 18 ATP and 12 NADPH
- (2) 6 ATP and 12 NADPH
- (3) 24 ATP and 18 NADPH
- (4) 12 ATP and 18 NADPH

98. Match List I with List II :

List I	List II
A. Genetically modified organism	I. <i>Agrobacterium tumefaciens</i>
B. Thermostable DNA polymerase	II. <i>Desulfohalobium</i>
C. Ti plasmid	III. <i>Thermus aquaticus</i>
D. pBR322	IV. <i>Escherichia coli</i>

Choose the correct answer from the options given below :

- (1) A-II, B-III, C-I, D-IV
- (2) A-I, B-IV, C-III, D-II
- (3) A-I, B-II, C-IV, D-III
- (4) A-II, B-I, C-IV, D-III

99. In which one of the following, the ovules are not enclosed by an ovary wall and remain exposed?

- (1) *Funaria*
- (2) *Pinus*
- (3) *Selaginella*
- (4) *Wolffia*

100. The enzyme required for carboxylation in the Calvin cycle is :

- (1) Carboxypeptidase
- (2) PEP carboxylase
- (3) RuBP carboxylase - oxygenase
- (4) Hexokinase

101. Match List I with List II :

List I	List II
A. Trypsin	I. Intercellular ground substance
B. Morphine	II. Lectin
C. Concanavalin A	III. Enzyme
D. Collagen	IV. Alkaloid

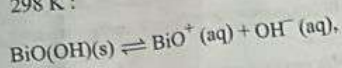
Choose the correct answer from the options given below :

- (1) A-III, B-IV, C-II, D-I
- (2) A-III, B-II, C-IV, D-I
- (3) A-I, B-II, C-III, D-IV
- (4) A-IV, B-III, C-II, D-I

The correct order of increasing metallic character of Na, Be, P, Mg and Si is:

- (1) ~~P < Si < Be < Mg < Na~~ **Be** ~~Na~~ **mg** ~~si~~
 (2) ~~Be < Si < P < Mg < Na~~
 (3) ~~P < Si < Na < Mg < Be~~
 (4) ~~P < Mg < Be < Si < Na~~

In a qualitative analysis, Bi^{3+} is detected by appearance of precipitate of $\text{BiO(OH)}(\text{s})$. Calculate pH when the following equilibrium exists at 298 K:



$$K = 4 \times 10^{-10}$$

- (Given: $\log 2 = 0.3010$)
 (1) 4.699 (2) 9.301
 (3) 5.286 (4) 8.714

36. Match List I with List II:

- | | |
|---------------------------|-------------------------------------|
| List I | List II |
| A. C_2H_4 | I. 3 σ bonds, 2 π bonds |
| B. C_2H_2 | II. 3 σ bonds, one lone pair |
| C. CH_4 | III. 4 σ bonds |
| D. NH_3 | IV. 5 σ bonds, 1 π bond |

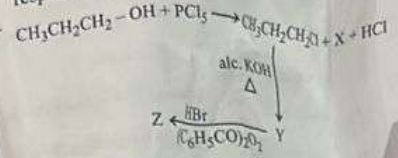
Choose the correct answer from the options given below:

- (1) A-I, B-II, C-IV, D-III $\text{C}=\text{C}$
 (2) A-II, B-III, C-I, D-IV $\text{C}\equiv\text{C}$
 (3) A-III, B-IV, C-II, D-I $\text{C}-\text{C}$
 (4) A-IV, B-I, C-III, D-II

37. Given below are certain reactions. Identify the reaction for which $K_p \neq K_c$.

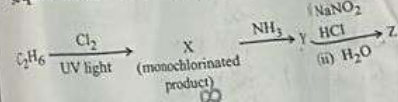
- (1) ~~$\text{N}_2(\text{g}) + \text{O}_2(\text{g}) \rightleftharpoons 2\text{NO}(\text{g})$~~
 (2) ~~$\text{H}_2\text{O}(\text{g}) + \text{CO}(\text{g}) \rightleftharpoons \text{H}_2(\text{g}) + \text{CO}_2(\text{g})$~~
 (3) $\text{H}_2(\text{g}) + \text{I}_2(\text{g}) \rightleftharpoons 2\text{HI}(\text{g})$
 (4) ~~$\text{N}_2(\text{g}) + 3\text{H}_2(\text{g}) \rightleftharpoons 2\text{NH}_3(\text{g})$~~

38. In the following reaction sequence, X and Z, respectively are:



- (1) $\text{X} = \text{H}_3\text{PO}_3$; $\text{Z} = \text{CH}_3\text{-CH(Br)-CH}_3$
 (2) $\text{X} = \text{POCl}_3$; $\text{Z} = \text{CH}_3\text{-CH(Br)-CH}_3$
 (3) $\text{X} = \text{H}_3\text{PO}_3$; $\text{Z} = \text{CH}_3\text{CH}_2\text{CH}_2\text{-Br}$
 (4) $\text{X} = \text{POCl}_3$; $\text{Z} = \text{CH}_3\text{CH}_2\text{CH}_2\text{-Br}$

39. The major product Z formed in the following sequence of reactions is:



- (1) $\text{C}_2\text{H}_5\text{NO}_2$
 (2) $\text{C}_2\text{H}_5\text{-N=N-OH}$
 (3) $\text{C}_2\text{H}_5\text{NH}_2$
 (4) $\text{C}_2\text{H}_5\text{OH}$

40. When 1 dm³ of CO_2 gas is passed over hot coke, the volume of gaseous mixture after complete reaction at STP becomes 1.4 dm³. The composition of the gaseous mixture at STP is:

- (1) 0.6 dm³ of CO, 0.8 dm³ of CO_2
 (2) 0.6 dm³ of CO, 0.4 dm³ of CO_2
 (3) 0.8 dm³ of CO, 0.8 dm³
 (4) 0.8 dm³ of CO, 0.6 dm³

91. Match List I with List II :

List I (Phase of cell cycle)	List II (Activity)
A. G ₁ phase	I. Actual cell division occurs
B. S phase	II. Cell is metabolically active and continuously grows
C. G ₂ phase	III. does not replicate its DNA
D. M phase	IV. Synthesis of DNA occurs and the amount of DNA per cell doubles
	V. Proteins are synthesised while cell growth continues

Choose the correct answer from the options given below :

- (1) A-II, B-III, C-IV, D-I
- (2) A-IV, B-I, C-II, D-III
- (3) A-III, B-IV, C-I, D-II
- (4) A-I, B-II, C-III, D-IV

92. Match List I with List II :

List I	List II
A. Incomplete dominance	I. Human skin colour
B. Co-dominance	II. Inheritance of flower colour in <i>Antirrhinum</i> sp.
C. Pleiotropy	III. Phenylketonuria disease in humans
D. Polygenic inheritance	IV. ABO blood groups

Choose the correct answer from the options given below :

- (1) A-II, B-IV, C-III, D-I
- (2) A-I, B-IV, C-III, D-II
- (3) A-I, B-III, C-II, D-IV
- (4) A-II, B-I, C-III, D-IV

93. Which of the following statements are correct with reference to the sex-determination in humans?

- A. The Amazon rainforest being cut and cleared for cultivation of soyabeans is an example of habitat loss.
- B. Steller's sea cow and passenger pigeon became extinct due to over-exploitation by humans.
- C. The Nile perch introduced into Lake Victoria in East Africa helped in population growth of cichlid fish in the lake.
- D. Water hyacinth is an invasive species.
- E. When a species becomes extinct, the plant-animal species associated with it are affected.

Choose the correct answer from the options given below :

- (1) B, C and D only
- (2) A, B and D only
- (3) A, B and E only
- (4) C, D and E only

94. Which of the following statements are correct with reference to a transcription unit?

- A. A transcription unit in DNA is defined primarily by three regions : promoter, structural gene and terminator.
- B. The promoter is said to be located towards the 5'-end of the structural gene.
- C. The promoter is a DNA sequence that provides binding site for RNA polymerase.
- D. The promoter defines the template and coding strands.
- E. The terminator is located towards the 3'-end of the coding strand and it defines the end of the process of transcription.

Choose the correct answer from the options given below :

- (1) A, C, D and E only
- (2) A, B, C, D and E
- (3) A, B, C and D only
- (4) B, C, D and E only

Which of the following statements are correct with reference to the sex-determination in humans?

- A. An offspring of a male worker (or worker).
- B. An unfertilized egg undergoes parthenogenesis.
- C. A male has half the number of chromosomes than that of a female.
- D. Males produce Y-chromosome.
- E. Honeybees have sex-determination.

Choose the correct answer from the options given below :

- (1) A, B, C and E
- (2) B, C, D and E
- (3) A, B, C and D
- (4) A, B, D and E

Match List I with List II

List I (Process)	List II
A. Glycolysis	I. Conversion of glucose to pyruvate
B. ETS	II. Conversion of pyruvate to acetyl-CoA
C. Accumulation of protons	III. Production of ATP
D. Krebs' cycle	IV. Production of CO ₂

Choose the correct answer from the options given below :

- (1) A-IV, B-II, C-I, D-III
- (2) A-I, B-IV, C-III, D-II
- (3) A-II, B-III, C-IV, D-I
- (4) A-III, B-I, C-II, D-IV

95. How many ATP molecules are required to make one mole of glucose from pyruvate?

- (1) 18 ATP
- (2) 6 ATP
- (3) 24 ATP
- (4) 12 ATP

Effect)
ustry
of stom
ilisation
ptions @

99. Heterophyllous development in response to environment is an example of which of the following phenomena?
- (1) Plasticity
 - (2) Dedifferentiation
 - (3) Redifferentiation
 - (4) Elasticity

10. Which of the following statements are not true regarding restriction endonucleases?
- A. They are called molecular scissors.
 - B. These are the enzymes responsible for restricting the growth of bacteriophages in *E. coli*.
 - C. They cut the DNA only at the centre of the palindromic sites.
 - D. They remove nucleotides only from the ends of DNA fragments.
 - E. They recognise specific palindromic base-pair sequences.

Choose the answer from the options given below:

- (1) A and E only
- (2) D and E only
- (3) A and B only
- (4) C and D only

111. Arrange the following steps of DNA fingerprinting in a correct sequence.

- A. Isolation of DNA and its digestion by restriction endonucleases.
- B. Hybridisation using a labelled VNTR probe.
- C. Transferring of separated DNA fragments to synthetic membranes.
- D. Detection of hybridised DNA fragments by autoradiography.
- E. Separation of DNA fragments by electrophoresis.

Choose the correct answer from the options given below:

- (1) A, B, D, C, E
- (2) A, E, C, B, D
- (3) A, D, B, E, C
- (4) A, E, B, C, D

112. Find the incorrect statement(s) about photosynthesis from the following:

- A. The water splitting complex is associated with PSI.
- B. C₄ plants use the C₃ pathway of CO₂ fixation as the main biosynthetic pathway.
- C. In C₄ plants, photorespiration does not occur.
- D. C₃ plants exhibit 'Kranz' anatomy.
- E. ATP synthesis in chloroplast occurs through chemiosmosis.

Choose the answer from the options given below:

- (1) B and C only
- (2) B only
- (3) A and D only
- (4) B and E only

113. Arrange the following steps of somatic hybridisation in a correct sequence.

- A. Digestion of cell walls.
- B. Isolation of naked protoplasts.
- C. Fusion of protoplasts to get hybrid protoplast.
- D. Isolation of single cells from two different varieties of plants.
- E. Growing of hybrid protoplast to form a new plant.

Choose the correct answer from the options given below:

- (1) E, A, B, C, D
- (2) D, B, A, E, C
- (3) E, B, A, D, C
- (4) D, A, B, C, E

114. The main function of bulliform cells in grasses is:

- (1) to make the leaf impermeable to fungal spores.
- (2) to perform photosynthesis.
- (3) to minimize water loss during water stress
- (4) to transport water.

102. Which of the following statements are correct regarding amino acids ?

- A. They are substituted methanes.
- B. Serine is an aromatic amino acid.
- C. Valine is a neutral amino acid.
- D. Lysine is an acidic amino acid.

Choose the correct answer from the options given below :

- (1) C and D only
- (2) A and C only
- (3) B and C only
- (4) A and B only

103. Which one of the following disorders is caused by the substitution of Glutamic acid (Glu) by Valine (Val) at the sixth position of the beta globin chain of the haemoglobin molecule ?

- (1) Thalassaemia
- (2) Haemophilia
- (3) Sickle-cell anaemia
- (4) Phenylketonuria

104. Which one of the following is the site for active ribosomal RNA synthesis ?

- (1) Kinetochores
- (2) Centrosomes
- (3) Chromatin
- (4) Nucleolus

105. Which one of the following statements is not true about the universal rules of binomial nomenclature ?

- (1) Both the words in a biological name, when handwritten, are separately underlined or printed in italics.
- (2) Biological names are generally in Latin.
- (3) The specific epithet in the biological name starts with a small letter.
- (4) The first word in the biological name represents the specific epithet, while the second component denotes the genus.

106. Match List I with List II :

List I (Growth Regulator)	List II (Function/Effect)
A. 2,4-D	I. Brewing industry
B. GA ₃	II. Stimulation of closure
C. Kinetin	III. Herbicide
D. ABA	IV. Nutrient mobilisation

Choose the correct answer from the options below :

- (1) A-IV, B-III, C-II, D-I
- (2) A-I, B-II, C-IV, D-III
- (3) A-I, B-IV, C-III, D-II
- (4) A-III, B-I, C-IV, D-II

107. Match List I with List II :

List I	List II
A. Conjunctive tissue	I. Specialised cells in vicinity of guard cells
B. Casparian strips	II. Endodermal cells in starch
C. Subsidiary cells	III. Tissue between xylem and phloem
D. Starch sheath	IV. Endodermal cells in suberin deposition

Choose the correct answer from the options given below :

- (1) A-III, B-IV, C-I, D-II
- (2) A-IV, B-III, C-I, D-II
- (3) A-IV, B-III, C-II, D-I
- (4) A-III, B-IV, C-II, D-I

108. Which one of the following types of pollination brings genetically different types of pollen grains to the stigma ?

- (1) Cleistogamy
- (2) Autogamy
- (3) Geitonogamy
- (4) Xenogamy

Heterophyllous development in an environment is an example of the following phenomena ?

- (1) Plasticity
- (2) Dedifferentiation
- (3) Redifferentiation
- (4) Elasticity

Which of the following regarding restriction endonucleases ?

- A. They are called molecular scissors.
- B. These are the enzymes that restrict the growth of *E. coli*.
- C. They cut the DNA at palindromic sites.
- D. They remove nucleotides from DNA fragments.
- E. They recognise specific DNA sequences.

Choose the answer from the options given below :

- (1) A and E only
- (2) D and E only
- (3) A and B only
- (4) C and D only

1. Arrange the following in a correct sequence :

- A. Isolation of restriction endonucleases
- B. Hybridisation
- C. Transferring synthetic molecules
- D. Detection of autoradiography
- E. Separation of electrophoresis

Choose the correct answer from the options given below :

- (1) A, B, D
- (2) A, D, B

131. Which of the following statements are correct with reference to packaging of DNA helix ?

- A. Histones are organized to form a unit of eight molecules called histone octamer.
- B. Histones are negatively charged basic proteins.
- C. Histones are rich in the basic amino acid residues - lysine and arginine.
- D. The positively charged DNA is wrapped around the histone octamer to form nucleosome.
- E. The packaging of chromatin at higher levels requires an additional set of proteins called non-histone chromosomal proteins.

Choose the correct answer from the options given below :

- (1) A, B and D only
- (2) B, D and E only
- (3) A, C and E only
- (4) C, D and E only

132. Which of the following statements are correct with respect to DNA separation, isolation and visualization ?

- A. The cutting of DNA is done by molecular scissors.
- B. The DNA fragments separate according to their size in an agarose gel, upon electrophoresis.
- C. The separated DNA fragments can be seen without staining when exposed to UV light.
- D. The separated DNA fragments, when stained with ethidium bromide, can be seen in visible light.

Choose the correct answer from the options given below :

- (1) B and C only
- (2) B and D only
- (3) A and B only
- (4) A and D only

133. Alpha-helix is found in which level of structure ?

- (1) Tertiary structure
- (2) Quaternary structure
- (3) Secondary structure
- (4) Primary structure

134. Match List I with List II :

List I

- A. Productivity
- B. Net primary productivity
- C. Gross primary productivity
- D. Secondary productivity

List II

- I. Gross primary productivity
- II. Rate of formation of new organic matter
- III. Rate of biological production
- IV. Rate of production of organic matter through photosynthesis

Choose the correct answer from the options given below :

- (1) A-III, B-I, C-IV, D-II
- (2) A-I, B-II, C-III, D-IV
- (3) A-III, B-I, C-II, D-IV
- (4) A-I, B-III, C-IV, D-II

135. Match List I with List II :

List I

(Placentation)

- A. Marginal
- B. Axile
- C. Parietal
- D. Basal

List II

(Example)

- I. Mustard
- II. Pea
- III. Marigold
- IV. Lemon

Choose the correct answer from the options given below :

- (1) A-I, B-III, C-II, D-IV
- (2) A-IV, B-II, C-I, D-III
- (3) A-II, B-IV, C-I, D-III
- (4) A-III, B-I, C-IV, D-II

Choose the correct statements with reference to anatomy :

- A. Hepatic portal system is the connection between liver and stomach.
- B. There are twelve pairs of cranial nerves arising from the brain.
- C. The ureters and oviducts open into the cloaca in female frogs.
- D. Hind-brain consists of mid-brain, pons, oblongata and optic lobes.
- E. Sinus venosus joins the sinus venosus.

Choose the correct answer from the options given below :

- (1) B and D only
- (2) A, B and C only
- (3) A, C and E only
- (4) B and C only

The flightless bird with wing-like paddle-like structures is known as :

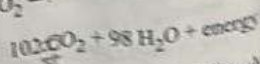
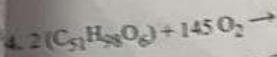
- (1) Aptenodytes
- (2) Psittacula

Male frogs can be distinguished due to the presence of

- A. Bulging eyes
- B. Vocal sacs
- C. Webbed digits
- D. Copulatory pads
- E. Olive green color

Choose the correct answer from the options given below :

- (1) B and D only
- (2) B and C only
- (3) A and B only
- (4) C and E only



The Respiratory Quotient (RQ) of a biomolecule used for respiration, as per the above equation, would be:

- 110672748
- 102 / 145 = 0.703
- 29
- (1) 1.0
 - (2) Less than 0.5
 - (3) Between 0.5 and 0.95
 - (4) Between 1.25 and 2

25. Exploring molecular, genetic and species-level diversity for products of economic importance is called:

- 110672748
- (1) Biomagnification
 - (2) Bioremediation
 - (3) Biofortification
 - (4) Bioprospecting

26. Match List I with List II:

- | List I | List II |
|-------------------|--|
| A. Decomposition | I. Accumulation of dark coloured amorphous colloidal substance |
| B. Detritus | II. Release of inorganic nutrients by the activity of microbes in soil |
| C. Mineralisation | III. Breaking down of complex organic matter into inorganic substances |
| D. Humification | IV. Dead remains of plants and animals including fecal matter |
- 110672748

Choose the correct answer from the options given below:

- (1) A-III, B-II, C-I, D-IV
- (2) A-I, B-II, C-III, D-IV
- (3) A-IV, B-III, C-I, D-II
- (4) A-III, B-IV, C-II, D-I

27. Identify the correct statements about biomolecules.

- A. Lipids are generally not biomolecules.
- B. Proteins are polymers.
- C. Polysaccharides are long chain sugars.
- D. Adenine is not a purine.
- E. Almost all enzymes are proteins.

Choose the correct answer from the options given below:

- (1) C, D and E only
- (2) B, C and E only
- (3) B, D and E only
- (4) A, B and C only

28. In angiosperms, root hairs arise from which one of the following regions of the root?

- (1) The region of meristematic activity
- (2) The root cap
- (3) The region of maturation
- (4) The region of elongation

29. Which one of the following is not a characteristic of plant cells in the phase of elongation?

- (1) Large conspicuous nuclei
- (2) Increased vacuolation
- (3) Cell enlargement
- (4) New cell wall deposition

30. Which of the following floral formula is the correct floral formula of Solanaceae family?

- (1) $\otimes \varnothing^* K_{(5)} C_{(5)} \overline{A}_5 \overline{G}_{(2)}$
- (2) $\otimes \varnothing^* K_5 C_{(5)} \overline{A}_5 \overline{G}_{(2)}$
- (3) $\otimes \varnothing^* K_5 C_5 \overline{A}_5 \overline{G}_{(2)}$
- (4) $\otimes \varnothing^* K_{(5)} C_{(5)} \overline{A}_5 \overline{G}_{(2)}$

102. Which
reg
A
C
D.

115. Arrange the following in the correct developmental sequence related to microsporogenesis:
A. Microspore tetrads
B. Sporogenous tissue
C. Pollen grains
D. Pollen mother cells
Choose the correct answer from the options given below:

- (1) D, A, C, B
(2) B, D, C, A
(3) A, D, C, B
(4) B, D, A, C

116. Which of the following is an *in situ* conservation method?
(1) Seed Banks
(2) Wildlife Safari Parks
(3) Botanical Gardens
(4) Sacred Groves

117. Which one of the following is a triploid cell?
(1) Zygote
(2) Central cell
(3) Primary endosperm cell
(4) Synergid

118. Since the origin and diversification of life on Earth, there have been five episodes of mass extinction of species. How is the sixth extinction, which is in progress, different from the previous episodes?

- (1) The current species extinction rates are far lower than those in previous episodes.
(2) The current species extinction rate is nearly 10 times faster than that in previous episodes.
(3) The present net species extinction rate is zero.
(4) The present species extinction rates are 100 to 1000 times faster than in the pre-human times.

119. In the *lac* operon the *z* gene codes for:
(1) permease
(2) the repressor of *lac* operon
(3) transacetylase
(4) *beta*-galactosidase

500

120. In racemose inflorescence,
(1) flowers are borne in an acropetal
(2) flowers are solitary
(3) the growth is limited
(4) the main axis terminates in a flower

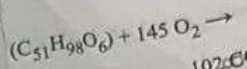
121. The main criteria used for the Classification proposed by R.H. Whittaker included:
A. Cell structure
B. Body organization
C. Presence of flagellum
D. Reproduction
E. Phylogenetic relationships
Choose the correct answer from the options given below:

- (1) A, B, C, D and E
(2) A, B, D and E only
(3) B, C and D only
(4) A, B and E only

122. "The Evil Quartet" of biodiversity loss includes which of the following?

- (1) Habitat loss and fragmentation
(2) Over-exploitation; Alien species invasion
(3) Habitat loss and fragmentation; Air pollution; Water pollution; Co-extinctions
(4) Over-exploitation; Alien species invasion; Soil pollution; Co-extinctions

123. Identify the correct sequence of steps in the cycle of Polymerase Chain Reaction:
(1) Annealing → Denaturation → Extension
(2) Extension → Annealing → Denaturation
(3) Denaturation → Extension → Annealing
(4) Denaturation → Annealing → Extension



102. $CO_2 + H_2O$
The Respiratory Quotient (RQ) used for respiration, as per the above reaction, would be:

- (1) 1.0
(2) Less than 0.5
(3) Between 0.5 and 0.95
(4) Between 1.25 and 2

Exploring molecular, genetic diversity for products of biotechnology is called:

- (1) Biomagnification
(2) Bioremediation
(3) Biofortification
(4) Bioprospecting

Match List I with List II

- List I
A. Decomposition
B. Detritus
C. Mineralisation
D. Humification

Choose the correct answer from the options given below:

- (1) A-III, B-IV, C-I, D-II
(2) A-I, B-II, C-III, D-IV
(3) A-IV, B-III, C-II, D-I
(4) A-II, B-III, C-IV, D-I

136. Choose the correct statements regarding frog's anatomy :

- A. Hepatic portal system is the special venous connection between liver and intestine.
- B. There are twelve pairs of cranial nerves arising from the brain.
- C. The ureters and oviducts open separately into the cloaca in female frogs.
- D. Hind-brain consists of cerebellum, medulla oblongata and optic lobes.
- E. Sinus venosus joins the right atrium of heart.

Choose the correct answer from the options given below :

- (1) B and D only
- (2) A, B and C only
- (3) A, C and E only
- (4) B and C only

137. The flightless bird with forelimbs modified as paddle-like structures suited for swimming is known as :

- (1) Aptenodytes
- (2) Neophron
- (3) Psittacula
- (4) Struthio

138. Male frogs can be distinguished from female frogs due to the presence of :

- A. Bulging eyes
- B. Vocal sacs
- C. Webbed digits in feet
- D. Copulatory pad on first digit of fore limbs
- E. Olive green-coloured skin with dark irregular spots

Choose the correct answer from the options given below :

- (1) B and D only
- (2) B and C only
- (3) A and B only
- (4) C and E only

139. A group of researchers produced fish-like animals and upon investigation the following characters were observed :

- A. Endoskeleton was made of cartilage
- B. Ectoparasitic as they were found attached on fish skin with their circular sucking mouth.
- C. Paired fins and scales were present on gill slits were present.

Which of the following species of animals did they consider a fit best with these characters ?

- (1) *Petromyzon* sp.
- (2) *Branchiostoma* sp.
- (3) *Scoliodon* sp.
- (4) *Exocoetus* sp.

140. In humans, respiration occurs in the following steps. Arrange these steps in the correct order.

- A. Diffusion of O_2 and CO_2 between blood and tissues
- B. Diffusion of O_2 and CO_2 across alveolar membrane
- C. Pulmonary ventilation by which atmospheric air is drawn in and CO_2 rich alveolar air is released out
- D. Cellular respiration
- E. Transport of gases by the blood

Choose the correct answer from the options given below :

- (1) A, B, C, D, E
- (2) E, A, C, D, B
- (3) C, B, E, A, D
- (4) C, A, B, E, D

141. Non-membrane bound cell organelles found in both prokaryotic and eukaryotic cells are

- (1) Mitochondria
- (2) Lysosomes
- (3) Centrosomes
- (4) Ribosomes

(4)

142. Choose the correct statement regarding GIFT to overcome infertility.

- A. Ova collected from a female donor are transferred to the uterus of an infertile female.
- B. Early embryos with up to 8 blastomeres are transferred into the fallopian tube of an infertile female.
- C. It is the transfer of an ovum collected from a donor into the fallopian tube of another female who cannot produce ovum but can provide suitable environment for fertilisation and development.
- D. Early embryos with up to 8 blastomeres are transferred to the uterus of an infertile female.

143. Choose the correct statements regarding muscle contraction.

- A. A motor neuron carries a signal sent to the Central Nervous System (CNS) to the sarcolemma of the muscle fibre.
- B. The neural signal generates an action potential which causes the release of Ca^{++} into sarcoplasm.
- C. Increase in Ca^{++} inactivates the Ca^{++} for breaking cross bridges.
- D. Actin binds to the myosin head to form a cross bridge.
- E. Shortening of sarcomere takes place by pulling actin filaments towards the centre of 'A' band.

Choose the correct answer from the options given below:

- (1) C and E only
- (2) A, B, D and E only
- (3) A and B only
- (4) C and D only

144. Insertion of a foreign DNA at BamHI in *E. coli* cloning vector pBR322 results in loss of antibiotic resistance towards:

- (1) Ampicillin and tetracycline
- (2) Tetracycline
- (3) Ampicillin
- (4) Gentamycin

145. The specific receptors for neurotransmitters at synapse are present on

- (1) Post-synaptic membrane
- (2) Pre-synaptic membrane
- (3) Myelin sheath
- (4) Schwann cell

146. Which of the following statements are correct with reference to human endoskeleton?

- A. Human skull is monocondylic.
- B. The joint between any two adjacent vertebrae is a cartilaginous joint.
- C. In human beings, the number of cervical vertebrae is seven.
- D. All ribs except the last 2 pairs are bicipital.
- E. The occipital bone of skull is articulated with atlas vertebra.

Choose the correct answer from the options given below:

- (1) B, C and E only
- (2) C, D and E only
- (3) A, B and D only
- (4) B and E only

147. The human protein named α -1-antitrypsin obtained from transgenic animals, is used for treatment of

- (1) Alzheimer's disease
- (2) Emphysema
- (3) Cystic fibrosis
- (4) Rheumatoid arthritis

Select the incorrect statement regarding Rh grouping.

- A. Erythroblastosis foetalis is observed having Rh⁺ mother with Rh⁺ foetus.
- B. Rh antigen is observed in majority of human population.
- C. Before blood transfusion, Rh factor also be matched.
- D. Rh incompatibility between Rh⁺ pregnant mother and Rh^{-ve} foetus causes Erythroblastosis foetalis.
- E. Erythroblastosis foetalis can be administered to mother immediately after second child.

Choose the answer from the options given below:

- (1) B and C only
- (2) A and E only

149. Match List I with List II

List I (Drug)

- A. Nicotine
- B. Morphine
- C. Heroin
- D. Cocaine

Choose the correct answer from the options given below:

- (1) A-II, B-I
- (2) A-III, B-I
- (3) A-III, B-II
- (4) A-II, B-III

157. Match List I with List II with respect to chronology of evolution of life forms :

- | List I | | List II | |
|------------------|---|---|---|
| A. About 65 mya | I. Jawless fish probably evolved | III. Seaweeds and few plants probably existed | IV. Invertebrates were formed and became active |
| B. About 500 mya | II. The dinosaurs suddenly disappeared from the earth | | |
| C. About 350 mya | | | |
| D. About 320 mya | | | |

Choose the correct answer from the options given below :

- (1) A-II, B-IV, C-I, D-III
- (2) A-I, B-II, C-III, D-IV
- (3) A-III, B-IV, C-I, D-II
- (4) A-II, B-IV, C-III, D-I

158. In which animal do haploid cells divide mitotically to produce gametes ?

- (1) Male frogs
- (2) Male honeybees
- (3) Male grasshoppers
- (4) Male earthworms

159. The WBC count of a person's blood sample is 8000/cu.mm. How many eosinophils and lymphocytes would be in the same blood sample approximately ?

- (1) 300 - 500/cu.mm and 500 - 700/cu.mm, respectively
- (2) 300 - 500/cu.mm and 1200 - 1500/cu.mm, respectively
- (3) 100 - 120/cu.mm and 160 - 200/cu.mm, respectively
- (4) 160 - 240/cu.mm and 1600 - 2000/cu.mm, respectively

160. What is the probability of children with 'O' blood group, where both father and mother are heterozygous for 'A' and 'B' blood group, respectively ?

- (1) 50%
- (2) 75%
- (3) 0%
- (4) 25%

161. Arrange the following events occurring in Renin-Angiotensin mechanism in the correct order :

- A. Increase in blood pressure and Glomerular filtration rate.
- B. Reabsorption of Na⁺ and water from distal parts of tubule due to Aldosterone.
- C. Fall in Glomerular filtration rate.
- D. Vasoconstriction by Angiotensin II and release of Aldosterone.
- E. Renin converts Angiotensinogen into Angiotensin I, followed by Angiotensin II.

Choose the correct answer from the options given below :

- (1) C, E, D, B, A
- (2) A, C, E, B, D
- (3) A, D, B, E, C
- (4) C, A, B, D, E

162. Choose the correct statements regarding population interactions between two species.

- A. In both parasitism and commensalism, only one species benefits and the other species is harmed.
- B. Both species benefit in mutualism.
- C. Both species benefit in commensalism.
- D. In parasitism, only one species benefits and the other species is harmed.
- E. In amensalism, one species is harmed and the other is unaffected.

Choose the correct answer from the options given below :

- (1) B and E only
- (2) B, D and E only
- (3) A and B only
- (4) A and D only

at BamHI site
 22 results in
 ds:
 ne
 neurotransmitters
 ements are com
 skeleton?
 lic.
 y two adjoint
 joint.
 mber of cervic
 rs are bicephalic
 is articulated with
 the options give
 D and E only
 nd E only
 α-1-antitrypsin
 s, is used for the

148. Select the *incorrect* statements with reference to Rh grouping.
- A. Erythroblastosis foetalis is a condition observed having foetus with Rh^{-ve} blood and mother with Rh^{+ve} blood.
 - B. Rh antigen is observed on RBCs in the majority of human beings.
 - C. Before blood transfusion, Rh group should also be matched.
 - D. Rh incompatibility is observed when a pregnant mother is Rh^{-ve} and the foetus is Rh^{+ve}.
 - E. Erythroblastosis foetalis can be avoided by administering anti-Rh antibodies to the mother immediately after the delivery of the second child.

Choose the answer from the options given below :

- (1) B and C only
- (2) A and B only
- (3) A and E only
- (4) C and D only

149. Match List I with List II :

List I (Drug)	List II (Effect)
A. Nicotine	I. Causes sense of euphoria and increased energy
B. Morphine	II. Stimulates adrenal gland to release catecholamines into blood circulation
C. Heroin	III. Effective sedative and painkiller
D. Cocaine	IV. A depressant; slows down body function

Choose the correct answer from the options given below :

- (1) A-II, B-III, C-IV, D-I
- (2) A-III, B-II, C-I, D-IV
- (3) A-III, B-II, C-IV, D-I
- (4) A-II, B-III, C-I, D-IV

150. Match List I with List II related to muscular/skeletal system :

List I	List II
A. Tetany	I. Inflammation of joints
B. Arthritis	II. Autoimmune disorder affecting neuromuscular junction
C. Myasthenia gravis	III. Wild contraction in muscle due to low Ca ⁺⁺ in body fluid
D. Muscular dystrophy	IV. Progressive degeneration of skeletal muscle

Choose the correct answer from the options given below :

- (1) A-IV, B-III, C-II, D-I
- (2) A-III, B-I, C-II, D-IV
- (3) A-I, B-II, C-III, D-IV
- (4) A-III, B-II, C-I, D-IV

151. Match List I with List II :

List I	List II
A. Progestasert	I. Barrier made of rubber used by females
B. Multiload 375	II. Oral contraceptive
C. Diaphragm	III. Hormone releasing IUD
D. Satieli	IV. Copper releasing IUD

Choose the correct answer from the options given below :

- (1) A-IV, B-II, C-I, D-III
- (2) A-III, B-IV, C-II, D-I
- (3) A-III, B-IV, C-I, D-II
- (4) A-IV, B-III, C-I, D-II

152. Select the correct statements regarding cell membrane in eukaryotic cell.

A. Membrane of human RBCs is approximately 50% protein.

B. Major phospholipids are arranged in a bilayer.

C. Extensions of the plasma membrane in the cell form mesosomes.

D. Tails towards the inner part of lipids are hydrophobic and thus protected from aqueous medium.

E. Glycocalyx is present on the outer surface of the plasma membrane.

- Choose the correct answer from the options given below :
- (1) C, D and E only
 - (2) B, C and E only
 - (3) A, C and E only
 - (4) ~~A, B and D only~~

153. Choose the correct statements regarding cell organelles and their inclusions.

A. The endomembrane system includes Golgi complex, endoplasmic reticulum and mitochondria.

B. Rough endoplasmic reticulum bears ribosomes on its surface.

C. Both mitochondria and plastids have circular DNA.

D. A network of microtubules, microfilaments and intermediate filaments present in the cytoplasm is called cytoskeleton.

E. Mitochondrion is a single membrane-bound structure.

- Choose the correct answer from the options given below :
- (1) A, B and C only
 - (2) A and B only
 - (3) C, D and E only
 - (4) B, C and D only

154. Match List I with List II related to embryonic development at various months of pregnancy.

List I

- A. The foetus movement starts and hair appears on the head
- B. The foetus develops limbs and digits
- C. The foetus develops external genital organs
- D. The foetus body is covered with fine hair, eyelids separate and eyelashes are formed

List II

- I. 24 weeks pregnancy
- II. 20 weeks pregnancy
- III. 8 weeks pregnancy
- IV. 12 weeks pregnancy

Choose the correct answer from the options given below :

- (1) A-II, B-IV, C-III, D-I
- (2) A-III, B-II, C-IV, D-I
- (3) ~~A-II, B-III, C-IV, D-I~~
- (4) A-IV, B-II, C-III, D-I

155. Which one of the following is an appropriate example of 'sexual deceit' ?

- (1) Sea anemone and clown fish
- (2) ~~Female wasp and fig~~
- (3) ~~Ophrys and bumblebee~~
- (4) ~~Cuckoo and crow~~

156. Select the set of fishes which belong to the class Osteichthyes :

- (1) Saw fish, Fighting fish and Dog fish
- (2) ~~Devil fish, Cuttlefish and Hagfish~~
- (3) ~~Flying fish, Angel fish and Fighting fish~~
- (4) ~~Starfish, Hagfish and Cuttlefish~~

157. Match List I with chronology of evolution

List I

- A. About 65 mya
- B. About 500 mya
- C. About 350 mya
- D. About 320 mya

Choose the correct below :

- (1) A-II, B-IV, C-I, D-III
- (2) A-I, B-II, C-III, D-IV
- (3) A-III, B-IV, C-I, D-II
- (4) ~~A-II, B-IV, C-I, D-III~~

158. In which animal mitotically to produce

- (1) Male frogs
- (2) ~~Male honey bee~~
- (3) Male grasshopper
- (4) Male earthworm

159. The WBC count is approximately 8000/cu.mm.

lymphocytes

approximate

(1) 300 - respect

(2) 300 - respe

(3) 100 - resp

(4) 160 - res

163. Spermatogonia undergo a series of cell divisions to produce sperms. Select the correct statements from the following.

- A. Spermatogonia always undergo meiotic division.
- B. Primary spermatocytes divide mitotically to produce secondary spermatocytes.
- C. Secondary spermatocytes, through their second meiotic division, produce haploid spermatids.
- D. Spermatids produce spermatozoa through mitosis.
- E. Spermatids transform into spermatozoa by spermiogenesis.

Choose the correct answer from the options given below :

- (1) C and E only
- (2) A, C and E only
- (3) B, C and D only
- (4) A and E only

164. The following are the stages of life cycle of *Plasmodium*. Arrange the stages in proper order.

- A. The parasites reproduce asexually in RBCs, bursting the cells.
- B. The parasites reproduce asexually in liver cells, bursting the cells and re-eg into blood.
- C. Gametocytes develop in RBCs.
- D. Sporozoites reach the liver through the blood.
- E. Female mosquito injects sporozoites into humans during bite.

Choose the correct answer from the options given below :

- (1) E, D, B, A, C
- (2) C, A, D, E
- (3) A, B, C, D, E
- (4) E, C, A, D

165. Match List I with List II :

List I (Bioactive molecules)	List II (Importance)
---------------------------------	-------------------------

- | | |
|---------------------|---|
| A. Streptokinase I. | Immunosuppressive agent |
| B. Statins | II. Removal of clots from blood vessels |
| C. Lipases | III. Blood cholesterol-lowering agent |
| D. Cyclosporin A | IV. Detergent formulations |

Choose the correct answer from the options given below :

- (1) A-II, B-III, C-I, D-IV
- (2) A-IV, B-III, C-II, D-I
- (3) A-II, B-III, C-IV, D-I
- (4) A-III, B-II, C-IV, D-I

166. Which of the following is not an example of convergent evolution ? *Analogous*

- (1) Wings of butterflies and birds
- (2) Flippers of penguins and dolphins
- (3) Fore limbs of whales and bats
- (4) Eyes of octopuses and mammals

167. What is the reason behind production of large holes in 'Swiss Cheese' ?

- (1) The production of large amount of CO_2 as H_2 by *Trichoderma polysporum*
- (2) The production of large amount of CO_2 as H_2 by *Clostridium butylicum*
- (3) The production of large amount of CO_2 as H_2 by lactic acid bacteria *Lactobacillus*
- (4) The production of large amount of CO_2 as H_2 by *Propionibacterium sharmanii*

168. Match List I with List II

- | | |
|-----------------|---------------------|
| A. Cortisol | (1) Aldosterone |
| B. Aldosterone | (2) Progesterone |
| C. Cholecystin | (3) Testosterone |
| D. Progesterone | (4) Androstenedione |

Choose the correct answer from the options given below :

- (1) A-III, B-IV, C-II, D-I
- (2) A-IV, B-III, C-II, D-I
- (3) A-II, B-III, C-IV, D-I
- (4) A-II, B-III, C-IV, D-I

169. Arrange the following around the side :

- A. Zona p...
- B. Perivit...
- C. Corona...
- D. Plasma...

Choose the correct answer from the options given below :

- (1) C, A, B, D
- (2) D, B, A, C

170. Which of the following is not a Verhulst's law ?

- (1) $\frac{dN}{dt}$
- (2) $\frac{dN}{dt}$
- (3) $\frac{dN}{dt}$
- (4) $\frac{dN}{dt}$

168. Match List I with List II :

List I
A. Cortisol

B. Aldosterone

C. Cholecystokinin

D. Progesterone

List II

I. Stimulates the formation of alveoli in mammary glands

II. Produces anti-inflammatory reactions

III. Stimulates reabsorption of Na^+ and water from renal tubule

IV. Stimulates secretion of pancreatic enzymes and bile juice

Choose the correct answer from the options given below :

(1) A-III, B-II, C-IV, D-I

(2) A-IV, B-II, C-I, D-III

(3) A-II, B-III, C-I, D-IV

(4) A-II, B-III, C-IV, D-I

169. Arrange the following cell layers/structures around the female gamete, from outer to inner side :

A. Zona pellucida

B. Perivitelline space

C. Corona radiata

D. Plasma membrane of ovum

Choose the correct answer from the options given below :

(1) C, A, D, B

(2) D, B, A, C

170. Which of the following equations depicts Verhulst-Pearl logistic population growth ?

(1) $\frac{dN}{dt} = rN \left(\frac{K-N}{N} \right)$

(2) $\frac{dN}{dt} = rN \left(\frac{K-N}{K} \right)$

(3) $\frac{dN}{dt} = rN \left(\frac{K}{K-N} \right)$

(4) $\frac{dN}{dt} = rN \left(\frac{K+N}{K} \right)$

171. The toxin proteins *Bacillus thuringiensis*, coded by which of the following genes would control *Heliothis* borer, respectively ?

(1) *cryIAC* and *cryIIAb*

(2) *cryIIAb* and *cryIAC*

(3) *cryIAC* and *cryIIIAb*

(4) *cryIAC* and *cryIIAb*

172. The JGA (Juxta Glomerular Apparatus) is a special sensitive region formed by cellular modifications in _____ related to the same nephron.

(1) Proximal convoluted tubule and afferent renal arteriole

(2) Distal convoluted tubule and efferent renal arteriole

(3) Proximal convoluted tubule and efferent renal arteriole

(4) Distal convoluted tubule and afferent renal arteriole

173. Match List I with List II :

List I

A. Molluscs

B. Reptiles

C. Adult amphibians

D. Amoeba

List II

I. Pulmonary respiration only

II. Branchial respiration

III. Cellular respiration

IV. Pulmonary and Cutaneous respiration

Choose the correct answer from the options given below :

(1) A-III, B-II, C-I, D-IV

(2) A-I, B-II, C-IV, D-III

(3) A-II, B-I, C-III, D-IV

(4) A-II, B-I, C-IV, D-III

174. The sixth mutant codon of beta globin gene causing polymerization of Haemoglobin and change in RBC shape is _____

(1) CAG

(2) GUG

(3) AUG

(4) GAG

175. In a population of a grasshopper species, the chromosome number of some members is 23 and some other members possess 24 chromosomes. The 23 and 24 chromosome-bearing members of this species are

- (1) females and males, respectively
- (2) all males
- (3) males and females, respectively
- (4) all females

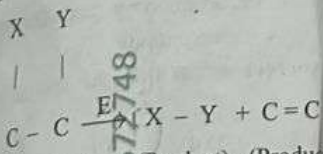
176. Select the incorrect statements from the following:

- A. Digestive system in Platyhelminthes is incomplete.
- B. Bilateral symmetry is a characteristic feature of adult Echinoderms.
- C. Pseudocoelom is possessed by Aschelminthes.
- D. Notochord is persistent throughout in the class Chondrichthyes.
- E. Members of class Reptilia maintain constant body temperature.

Choose the answer from the options given below:

- (1) A and C only
- (2) B and E only
- (3) C and D only
- (4) B and D only

177. The following reaction depicts the activity of a particular class of enzymes:



Identify the enzyme class 'E' from the following options:

- (1) Ligases
- (2) Transferases
- (3) Lyases
- (4) Isomerases

178. Ecological pyramids represent the relationship between the organisms at different trophic levels and they are generally inverted for:

- (1) Pyramid of biomass in grassland
- (2) Pyramid of biomass in sea
- (3) Pyramid of number in grassland
- (4) Pyramid of energy in pond ecosystem

179. Evolution of human appears parallel to progressive development of brain and language skills. As such, the evolution of individual species in the sequence of their appearance is:

- (1) *Ramapithecus* → *Homo habilis* → *Homo erectus* → Neanderthal → *Homo sapiens*
- (2) *Homo habilis* → *Homo erectus* → *Ramapithecus* → Neanderthal → *Homo sapiens*
- (3) *Homo sapiens* → *Ramapithecus* → *Homo habilis* → Neanderthal → *Homo erectus*
- (4) Neanderthal → *Ramapithecus* → *Homo habilis* → *Homo erectus* → *Homo sapiens*

180. Match List I with List II:

List I (Respiratory Volume)	List II (Capacity in ml)
--------------------------------	-----------------------------

- | | |
|-------------------------------------|---------------------|
| A. ERV (Expiratory Reserve Volume) | I. 2500 - 3000 ml |
| B. RV (Residual Volume) | II. 500 ml |
| C. IRV (Inspiratory Reserve Volume) | III. 1000 - 1100 ml |
| D. TV (Tidal Volume) | IV. 1100 - 1200 ml |

Choose the correct answer from the options given below:

- (1) A-I, B-II, C-III, D-IV
- (2) A-III, B-IV, C-I, D-II
- (3) A-III, B-I, C-IV, D-II
- (4) A-I, B-III, C-II, D-IV

relations
opic level

⊙ Δ

stem

lled to
and langua
dual spec

-
-
-
-
-
-
-
-

city in mL)

3000 mL

1100 mL

1200 mL
ptions give



[Contd.]



SPACE FOR ROUGH WORK

110672748

